

---

# FLIGHT PLAN & SITE SURVEY

---

C 5-3836 VERNON R/C AEROMODELLERS- FIELD - 4400 L &  
A CROSS RD VERNON BC

July 10, 2026



## IMPORTANT NOTICE

Please ensure you have received all required authorizations prior to flight. This Site Survey was created using RPAS Wilco. The user accepts all responsibility for the accuracy of the information.

Terms & Conditions: [rpswilco.com/#tnc](https://rpswilco.com/#tnc)

# Mission Information

C 5-3836 VERNON R/C AEROMODELLERS- FIELD - 4400 L & A CROSS RD VERNON BC

## FLIGHT DETAILS

Reference No:	<b>MAAC-5-3836</b>
Project Name:	<b>VERNON R/C AEROMODELLERS</b>
Pilot Name:	<b>MAAC</b>
Pilot Certificate:	
Mission Type:	<b>VLOS</b>
Flight Start:	<b>July 10, 2026 09:46 AM</b>
Flight End:	<b>July 10, 2026 10:46 AM</b>

## LOCATION DETAILS

Flight Address:	<b>FIELD - 4400 L &amp; A CROSS RD VERNON BC</b>
Latitude:	<b>50° 20' 48.36" N ( 50.347 )</b>
Longitude:	<b>119° 15' 8.10" W ( -119.252 )</b>
Field Elevation:	<b>1306 ft MSL</b>
Altitude / Radius:	<b>400 ft / 926 m ( 0.5 nm )</b>
Classification:	<b>UNCONTROLLED</b>
FIR / Contact:	<b>CZVR / 604-586-4500</b>

## REPORT CONTENTS

Site Survey • Obstacles (if available) • Nearby Aerodromes • Canadian Aviation Regulations • GFA • Aerodrome Supplements • METAR & TAF • NOTAMs • CFS



# Airspace Classification

MISSION LOCATION SURVEY

## AIRSPACE MAP



## OVERLYING AIRSPACES

Class	Name	Floor	Ceiling
E	Kelowna/Penticton, BC [TA]	700AGL	18000MSL
E	3.1.1-18 [TA]	1600AGL	18000MSL

Planned flight altitude is below the lowest documented airspace layer

## NEAREST AERODROMES & DISTANCE FROM OPERATION

WILDLIFE (CVW2 - WATERDROME - Reg)	Lat: 50.244	Long: -119.344	13.208KM	7.132NM	SW
<b>Operator:</b> ROBERT LORD: PHONE: 250-545-9108, PHONE: 250-859-9329, POST: 7880 OKANAGAN LANDING ROAD.VERNON, BC V1H 1H1 <b>FIR Contact:</b> 604-586-4500					
VERNON (CYVK - AERODROME/HELIPORT - Cert)	Lat: 50.246	Long: -119.332	12.561KM	6.782NM	SW
<b>Operator:</b> CORP OF THE CITY OF VERNON: PHONE: 250-545-3035, POST: UNKNOWN <b>FIR Contact:</b> 604-586-4500					
WINFIELD (WOOD LAKE) (CAY9 - WATERDROME - Reg)	Lat: 50.05	Long: -119.4	34.634KM	18.701NM	S
<b>Operator:</b> TURTLE BAY MARINA: PHONE: 250-766-3120, POST: UNKNOWN <b>FIR Contact:</b> 604-586-4500					

# CANADA WATER AERODROME SUPPLEMENT

Effective 0901Z 19 March 2026 to 0901Z 18 February 2027

AERODROME/FACILITY DIRECTORY B279

## VANDERHOOF WATER BC (Cont'd)

CVH3

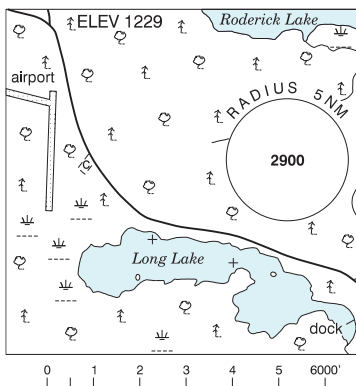
<b>COMM</b>	
<b>ATF</b>	ttc 122.8 5NM 5100 ASL
<b>CAUTION</b>	Land A/D 1.5NM NNW. Low water Sep/Oct. Watch for fisheries buoys. Ocsd debris mid Jul-mid Aug dur hi water release.

## VERMETTE LANDING QC — See PETAWAWA / VERMETTE LANDING

## VERMILION BAY ON

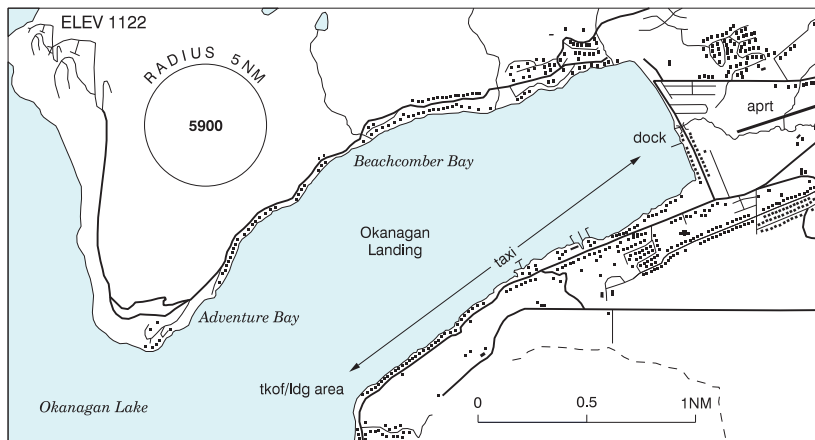
CKH6

<b>REF</b>	N49 53 W93 24 1.5NW 0° (2014) UTC-6(5) Elev 1229' A5007
<b>OPR</b>	Wilderness Air 807-227-5473 Reg
<b>PF</b>	B-1 C-2,3,4,5
<b>FLT PLN</b>	Pilots to open/close VFR flt plan with London rdo, FISE or by phone
<b>FIG</b>	London 866-WXBRIEF (Toll free within Canada) or 866-541-4104 (Toll free within Canada & USA)
<b>SERVICES</b>	
<b>FUEL</b>	100LL
<b>OIL</b>	All
<b>S</b>	5
<b>A/D DATA</b>	Open water mid May-end Oct. Depth 4', sheltered bay.
<b>COMM</b>	
<b>ATF</b>	ttc 130.7 5NM 4300 ASL
<b>CAUTION</b>	Land A/D 1.2NM NW.



## VERNON / WILDLIFE BC

CVW2



<b>REF</b>	N50 14 37 W119 20 40 2.3SW 16°E (2016) UTC-8(7) Elev 1122' A5005
<b>OPR</b>	Robert Lord 250-859-9329 or 250-545-9108 Reg PN

# CANADA WATER AERODROME SUPPLEMENT

Effective 0901Z 19 March 2026 to 0901Z 18 February 2027

B280 AERODROME/FACILITY DIRECTORY

## VERNON / WILDLIFE BC (Cont'd)

CVW2

<b>PF</b>	C-1,2,3,4,5,6
<b>FLT PLN</b> <b>FIC</b>	Kamloops 866-WXBRIEF (Toll free within Canada) or 866-541-4101 (Toll free within Canada & USA)
<b>SERVICES</b> <b>S</b>	7 PPR
<b>A/D DATA</b>	Open water Apr-Nov. Depth 3-4', sandy beach.
<b>COMM</b> <b>ATF</b>	UNICOM ltd hrs O/T tfc 122.8 5NM 4100 ASL exc area within class D airspace.
<b>NAV</b> <b>NDB</b>	6K 302 (M) N50 21 00 W119 15 36 Pvt
<b>PRO</b>	Apch E side of Okanagan Landing at 1600 ASL, ldg S of yacht club, taxi to buoys (4). Reverse to tkof.
<b>CAUTION</b>	Vernon aprt 0.5NM NE of A/D. Remain at 1600 ASL til clear of Okanagan Landing. Extv parajumping in area. Glider activity ocsl to 12,500 ASL & ultralight activity.

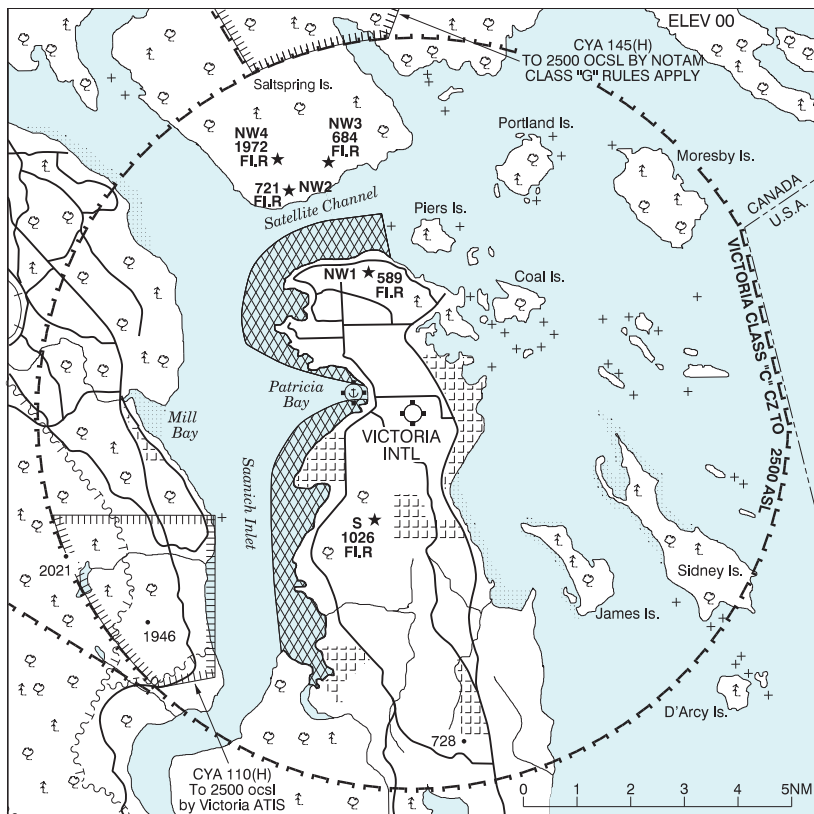
# CANADA WATER AERODROME SUPPLEMENT

Effective 0901Z 19 March 2026 to 0901Z 18 February 2027

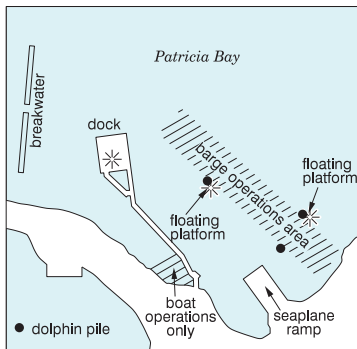
AERODROME/FACILITY DIRECTORY B281

## VICTORIA AIRPORT BC

CAP5



<b>REF</b>	N48 39 13 W123 26 57 12NNW 17°E (2013) UTC-8(7) Elev 00' VTA A5004 LO2 T1
<b>OPR</b>	Victoria Intl Aprt Authority 250-953-7500/7511 Reg
<b>PF</b>	A-1,2,3,6 at adj land A/D C-4,5
<b>CUST</b>	AOE/15/SEAPL 888-226-7277 1630-0030Z†
<b>FLT PLN</b>	
<b>FIC</b>	Kamloops 866-WXBRIEF (Toll free within Canada) or 866-541-4101 (Toll free within Canada & USA)
<b>WX</b>	METAR H24 (CYYJ) AUTO (See COMM) TAF H24, issue times: 00, 06, 12, 18Z



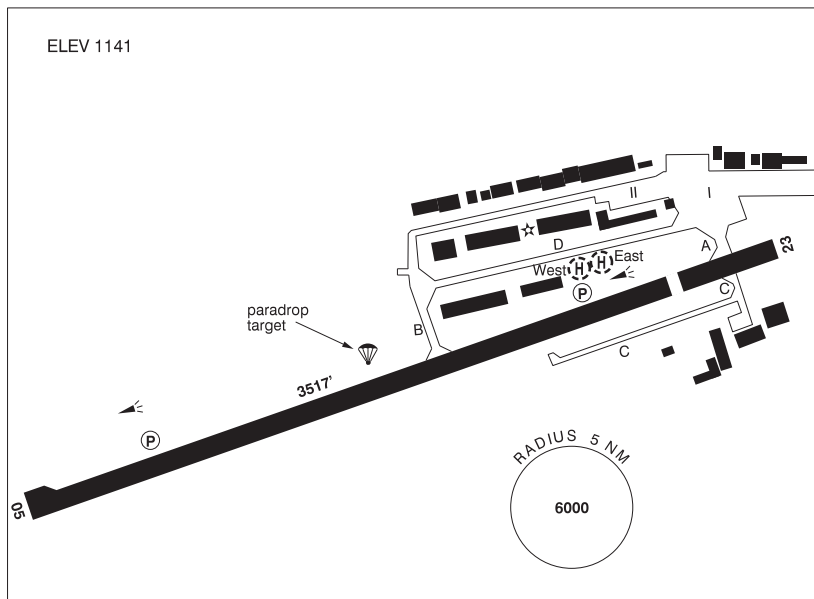
<b>SERVICES</b>	
<b>FUEL</b>	100LL 866-654-0646 PN
<b>OIL</b>	20W50
<b>S</b>	1,3 at adj land A/D, 5

**BRITISH COLUMBIA**

**AERODROME / FACILITY DIRECTORY**

**VERNON BC**

**CYVK**



<b>REF</b>	N50 14 45 W119 19 54 1.8SW 16°E (2013) UTC-8(7) Elev 1141' A5005 LO2 CAP
<b>OPR</b>	Corp of the City of Vernon 250-545-3035 1530-2400Z† Mon-Fri Cert
<b>PF</b>	B-1 C-2,3,4,5,6
<b>FLT PLN</b>	
<b>    FIC</b>	Kamloops 866-WXBRIEF (Toll free within Canada) or 866-541-4101 (Toll free within Canada & USA)
<b>    WX</b>	AUTO (see COMM) WxCam
<b>SERVICES</b>	
<b>    FUEL</b>	100LL (Self Serve, Visa, Mastercard, debit), JA, SP, Jet A call out chg may be levied after hrs 250-309-CYVK (2985)
<b>    S</b>	2,3,4,5
<b>RWY DATA</b>	Rwy 05(054°)/23(234°) 3517x75 ASPH Thld 23 displ 456' Rwy 23 down 0.31%
<b>    RWY CERT</b>	Rwy 05/23 AGN II
<b>    TWY CERT</b>	Twy C AGN I
<b>    TWY</b>	Twy C day use only.
<b>    RCR</b>	OPR 250-309-2985 Ltd win maint 16-24Z† Mon-Fri O/T chg may be levied.
<b>HELI DATA</b>	Parking Pads East & West: 25' x 25' CONC Max heli overall length 57.4' Heli must park hdg E/W. Additional itinerant heli prkg on grass E of heli pads.
<b>LIGHTING</b>	05-(TE ME) P1 3.5", 23-(TE ME) P1 4" ARCAL-122.8 type K.
<b>COMM</b>	
<b>    MF</b>	UNICOM ltd hrs O/T tfc 122.8 5NM 4100 ASL (CAR 602.98) Exc area within class "D" airspace.
<b>    AUTO</b>	123.175

## BRITISH COLUMBIA

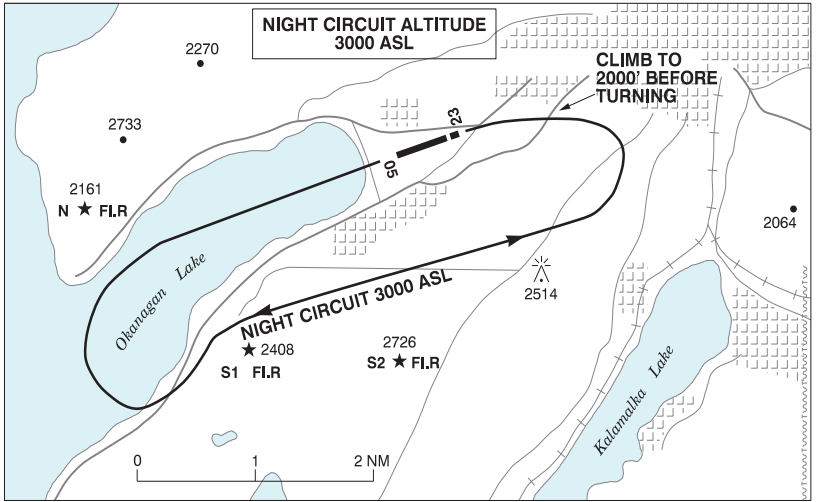
## AERODROME / FACILITY DIRECTORY

## VERNON BC (Cont'd)

CYVK

<b>NAV</b>	6K 302 (M) N50 21 00 W119 15 36 Pvt
<b>NDB</b>	
<b>RESTRICTIONS</b>	OPERATING RESTRICTIONS 1. Pursuant to CARS 602.96(3)(D), not certified for ngt ops unless S2 beacon is oprg.
<b>PRO</b>	Day: Circuit hgt 2400 ASL. <b>Night: Rgt hand circuits rwy 05 (CAR 602.96). Circuit hgt 3000 ASL.</b> Heli follow fixed-wing circuit procedures. Heli prkg pads accessed via rwy, hover taxi to pads.
<b>CAUTION</b>	Only pilots familiar with lcl terrain should use this aprt dur hrs of darkness. Marked fence parallels & lies within 200' of centreline of apch to Rwy 05. Extv parajumping in area. Glider activity ocsl to 12,500 ASL & ultra-light activity at A/D. Water A/D 0.5NM SW tfc at 1600 ASL. Daily radiosonde balloon launches fr N50 17 00 W119 16 00 (aprx 3.3NM NNE OF AD), with an ascent rate of 1000 ft/min btwn the hrs of 1115-1345Z & 2315-0145Z.

**VERNON VFR TERMINAL PROCEDURES CHART - NIGHT CIRCUIT PROCEDURE**



# CANADA WATER AERODROME SUPPLEMENT

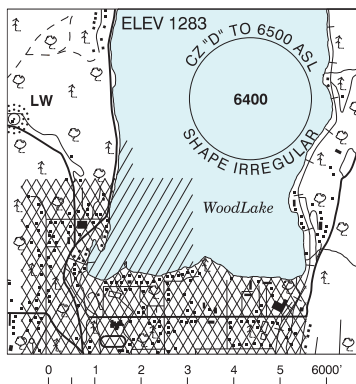
Effective 0901Z 19 March 2026 to 0901Z 18 February 2027

AERODROME/FACILITY DIRECTORY B297

## WINFIELD (WOOD LAKE) BC

CAY9

<b>REF</b>	N50 03 W119 24 2N 16°E (2016) UTC-8(7) Elev 1283' A5005
<b>OPR</b>	Turtle Bay Marina 250-766-3120 Reg
<b>PF</b>	B-1,2,3,5 C-6
<b>FLT PLN</b>	
<b>FIC</b>	Kamloops 866-WXBRIEF (Toll free within Canada) or 866-541-4101 (Toll free within Canada & USA)
<b>SERVICES</b>	
<b>S</b>	5
<b>A/D DATA</b>	Open water Apr-Nov.
<b>COMM</b>	
<b>TWR</b>	Kelowna 119.6 (V) 1330-0630Z†
<b>MF</b>	Penticton rdo 119.6 0630-1330Z† Kelowna CZ shape irregular 6500 ASL (CAR 602.98)
<b>NAV</b>	
<b>NDB</b>	KELOWNA LW 257 (MZ) N50 03 39 W119 24 59
<b>PRO</b>	Transponder mode C reqrd within Kelowna Class D airspace. No tkof, ldg or step taxi within 200' of shore, or within shaded area on sketch. Nose into dock.
<b>CAUTION</b>	Extv lcl tfc fr surrounding helis and waterways, monitor 126.7. Marine tfc in vic.



## WINNIPEG FIC – RCO

For a list of Winnipeg RCOs and map, see Planning Section under FISE RCOs.

**WOODS BAY ON** — See ORILLIA / WOODS BAY