
FLIGHT PLAN & SITE SURVEY

E 8-3845 NIAGARA REGION MODEL FLYING CLUB- WALKER FIELD

July 10, 2026



IMPORTANT NOTICE

Please ensure you have received all required authorizations prior to flight. This Site Survey was created using RPAS Wilco. The user accepts all responsibility for the accuracy of the information.

Terms & Conditions: rpaswilco.com/#tnc

Mission Information

E 8-3845 NIAGARA REGION MODEL FLYING CLUB- WALKER FIELD

FLIGHT DETAILS

Reference No:	MAAC-8-3845
Project Name:	NIAGARA REGION MODEL FLYING CLUB
Pilot Name:	MAAC
Pilot Certificate:	
Mission Type:	VLOS
Flight Start:	July 10, 2026 12:47 PM
Flight End:	July 10, 2026 01:47 PM

LOCATION DETAILS

Flight Address:	WALKER FIELD
Latitude:	43° 5' 42.32" N (43.095)
Longitude:	79° 10' 23.94" W (-79.173)
Field Elevation:	594 ft MSL
Altitude / Radius:	400 ft / 926 m (0.5 nm)
Classification:	UNCONTROLLED
FIR / Contact:	CZYZ / 905-676-4509

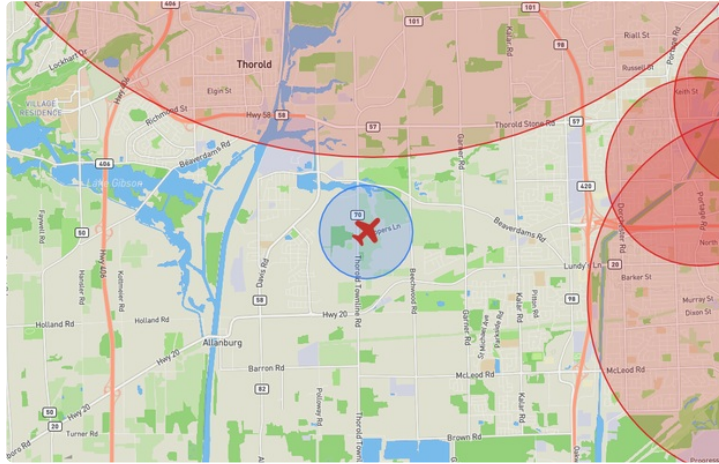
REPORT CONTENTS

Site Survey • Obstacles (if available) • Nearby Aerodromes • Canadian Aviation Regulations • GFA • Aerodrome Supplements • METAR & TAF • NOTAMs • CFS





Flight Map & MODEL Details

MISSION LOCATION SURVEY

FLIGHT AREA MAP



MISSION LOCATION DETAILS

ROLE	LATITUDE	LONGITUDE
 MODEL	43° 5' 42.32" N 43.095	79° 10' 23.94" W -79.173
 Pilot		
 Payload Op.		
 Observer		

Airspace Classification

MISSION LOCATION SURVEY

AIRSPACE MAP



OVERLYING AIRSPACES

Class	Name	Floor	Ceiling
E	3.4.1-43 [TA]	700AGL	1800MSL
E	Southern Ontario Low Level Control Area a) [CAE]	2500MSL	6500MSL

Planned flight altitude is below the lowest documented airspace layer

NEAREST AERODROMES & DISTANCE FROM OPERATION

NIAGARA FALLS (GREATER NIAGARA GENERAL HOSP) (CNG8 - HELIPORT - Cert)	Lat: 43.106	Long: -79.092	6.714KM	3.625NM	E
Operator: NIAGARA HEALTH SYSTEM: PHONE: 905-378-4647 +32284, POST: UNKNOWN FIR Contact: 905-676-4509					
NIAGARA DISTRICT (CYSN - AERODROME - Cert)	Lat: 43.192	Long: -79.171	10.741KM	5.8NM	N
Operator: NIAGARA DISTRICT AIRPORT COMMISSION: PHONE: 905-684-7447, POST: UNKNOWN FIR Contact: 905-676-4509					
NIAGARA FALLS (CPQ3 - HELIPORT - Cert)	Lat: 43.119	Long: -79.075	8.387KM	4.529NM	E
Operator: NIAGARA HELICOPTERS LTD: FAX: 905-374-2856 , PHONE: 905-357-5672, PHONE: 905-357-5673, POST: UNKNOWN FIR Contact: 905-676-4509					

ONTARIO

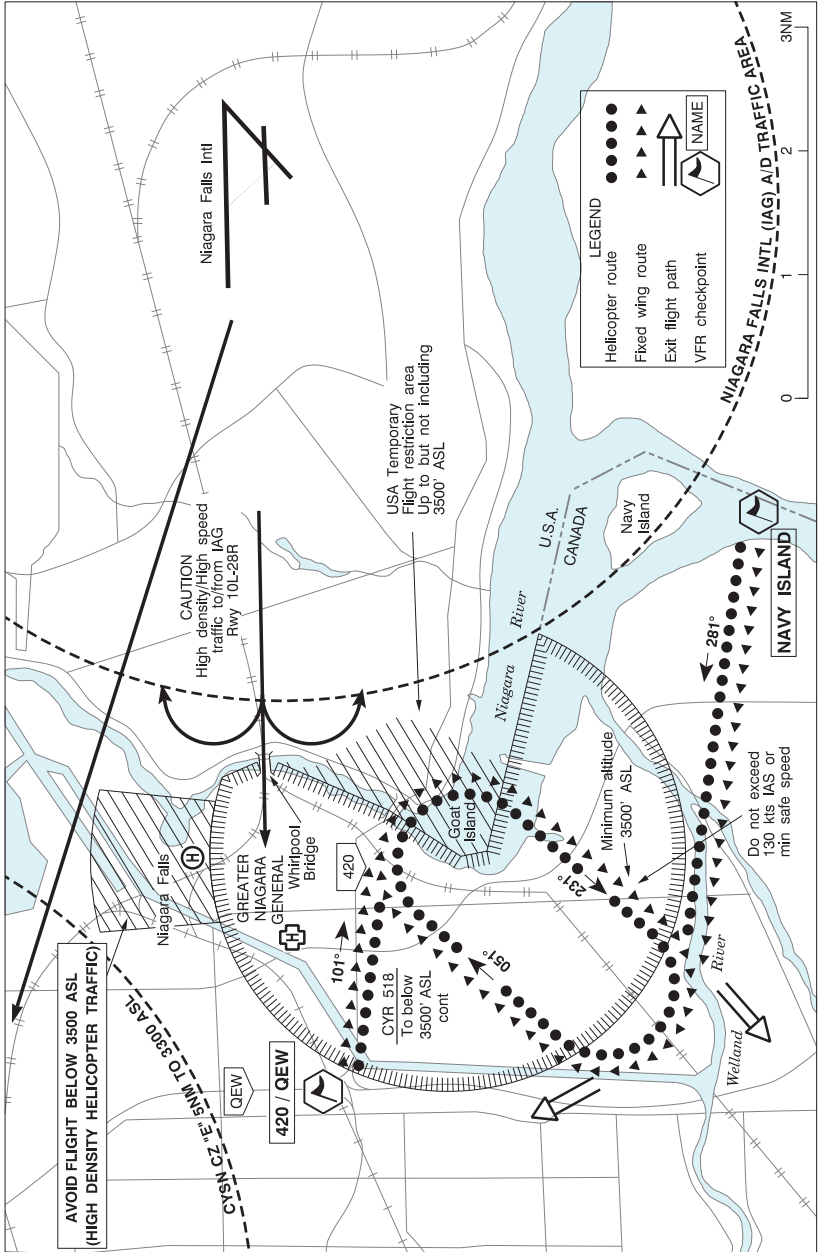
AERODROME / FACILITY DIRECTORY

NIAGARA FALLS (GREATER NIAGARA GENERAL HOSP) ON (Heli)

CNG8

REF	N43 06 21 W79 05 31 Adj N 11°W (2012) UTC-5(4) Elev 650' VTA A5000	
OPR	Niagara Health System 905-378-4647 ext 32284 Cert PPR	
FLT PLN	FIC London 866-WXBRIEF (Toll free within Canada) or 866-541-4104 (Toll free within Canada & USA)	
HELI DATA	FATO/TLOF 86' dia CONC/ASPH Safety Area 114' dia Max heli overall length 57.5' (CAR 602.96)	
RCR	Opr	
LIGHTING	RY(LO)	
COMM	ATF tfc 123.25 5NM 3700 ASL excluding Niagara Falls area pattern (in vicinity of CYR518)	
PRO	Arr/dep 010° to 015° fr heli, slope 8% (H3) (CAR 602.96).	
CAUTION	Extv tfc in the vicinity of CYR518	

NIAGARA FALLS VFR TERMINAL PROCEDURES CHART



ONTARIO

AERODROME / FACILITY DIRECTORY

NIAGARA FALLS VFR TERMINAL PROCEDURES CHART (Cont'd)

NAME	IDENT	LAT/LONG
420 / QEW	VCFRQ	N43° 05' 45" W079° 07' 00"
NAVY ISLAND	VCNVY	N43° 02' 18" W079° 01' 00"

PROCEDURES**ALL AIRCRAFT AT 3500' ASL OR ABOVE**

- Prior to **pattern entry and in pattern**: recognition, landing, strobe and/or anti-collision **lights ON**.
- Fly clockwise pattern as depicted.
- Do not exceed 130 kts or minimum safe speed.
- Broadcast altitude, checkpoint & intentions on 122.050 MHz prior to entry & monitor that frequency in pattern.
- Use Niagara Falls Intl Altimeter Setting.

WARNING: This is a VFR procedure "SEE AND BE SEEN".

Pilots are responsible for own separation and collision avoidance.

WARNING: Exit pattern as depicted, straight out, wings level.

CYR518: FLIGHTS IN RESTRICTED AREA**PRIOR WRITTEN AUTHORIZATION IS REQUIRED**

From the Transport Canada, Hamilton TC Centre

Address: TRANSPORT CANADA
HAMILTON TC CENTRE
9300 AIRPORT ROAD, UNIT 450
MOUNT HOPE, ONTARIO
LOR 1W0

NOTE: 10 days notice required/tel: 905-679-3477

GENERAL

CAUTION: Numerous flights in **CYR518**

CAUTION: High speed aircraft departing Niagara Falls, N.Y. in the vicinity of Whirlpool Bridge.

CAUTION: Goat Island may be obscured by mist.

COMMUNICATION FREQUENCIES

PATTERN FREQUENCY		<u>122.050</u>
Niagara Falls N.Y.	ATIS	120.8 ltd hrs
	TWR	118.5 ltd hrs
St. Catharines Radio		123.25 ltd hrs

ONTARIO

AERODROME / FACILITY DIRECTORY

ST. CATHARINES / NIAGARA DISTRICT ON

CYSN

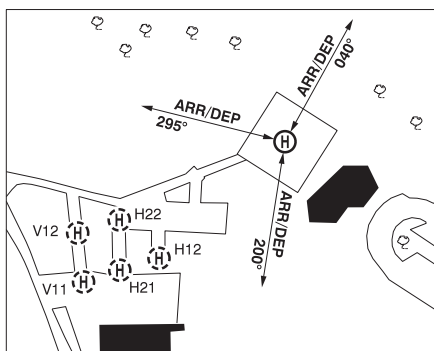
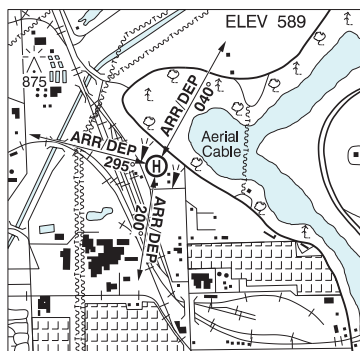
REF	N43 11 30 W79 10 16 11°W UTC-5(4) Elev 322' VTA A5000 LO6 HI5 CAP	
OPR	Niagara District Aprt Comsn 905-684-7447 11-24Z† Mon-Fri, 1230-2000Z† Sat-Sun, exc hols. O/T 2hrs PN, call out chg may be levied ctc opr Cert Ldg fees	
PF	A-1,7 C-2,3,4,5,6	
CUST	AOE/15 888-226-7277 13-05Z†	
FLT PLN	When FSS clsd pilots to open/close VFR flt plan and obtain IFR clnc fr London rdo FISE or by phone. To file an IFR arr rpt ctc Toronto Centre 888-217-1241 if unable via rdo.	
FIC	London 866-WXBRIEF (Toll free within Canada) or 866-541-4104 (Toll free within Canada & USA)	
WX	METAR 12-02Z† O/T LWIS TAF 14-02Z†, issue times: 14, 20Z.	
SERVICES	Svcs avbl 13-23Z† O/T call out chg applies 905-684-3600	
FUEL	100LL, JA-1	
OIL	Aeroshell W100, 15W50	
S	1,2,3,4,5,6	
RWY DATA	Rwy 06(064°)/24(244°) 5000x100 ASPH Rwy 01(009°)/19(189°) 2498x75 ASPH Rwy 11(107°)/29(287°) 1988x75 ASPH	
RWY CERT	Rwy 06/24 AGN IIIA Rwy 01/19 AGN I Rwy 11/29 AGN I	
TWY CERT	Twy D AGN I	
RCR	Opr CRFI Win maint 11-24Z† Mon-Fri, 1230-2000Z† Sat-Sun, Oct 16-Apr 16, exc hols. O/T 2hrs PN, call out chg may be levied ctc opr.	
LIGHTING	06-AO(TE ME) P2, 24-AO(TE ME) P2 Opr 1215-02Z† O/T ARCAL-123.25 type K	
COMM		
RADIO	123.25 PTC avbl (V) 1215-02Z† (emerg only 905-688-8367)	
RCO	London rdo 123.475 (FISE) 126.7 (bcst)	
ATIS	128.525 1215-02Z†	
MF	rdo 123.25 1215-02Z† 5NM 3300 ASL (CAR 602.98)	
ATF	ffc 123.25 02-1215Z† 5NM 3300 ASL	
ARR	Toronto Tml 133.4	
DEP	Toronto Tml 133.4	
PAL	133.3	
PRO	For flt over Niagara Falls, see Niagara Falls VTPC. Heli ops proh on E apron. NOISE MITIGATION: After tkof from Rwy 24, track on or N of the extended rwy centreline, no turns below 1000 ASL.	
CAUTION	Hold position on Twy A is for both Rwy 01 and 06. Pilots intending to depart Rwy 06 must verify correct orientation on Rwy 06 prior to departure. Hold position on Twy B is for Rwy 06/24 and Rwy 29.	

ONTARIO

AERODROME / FACILITY DIRECTORY

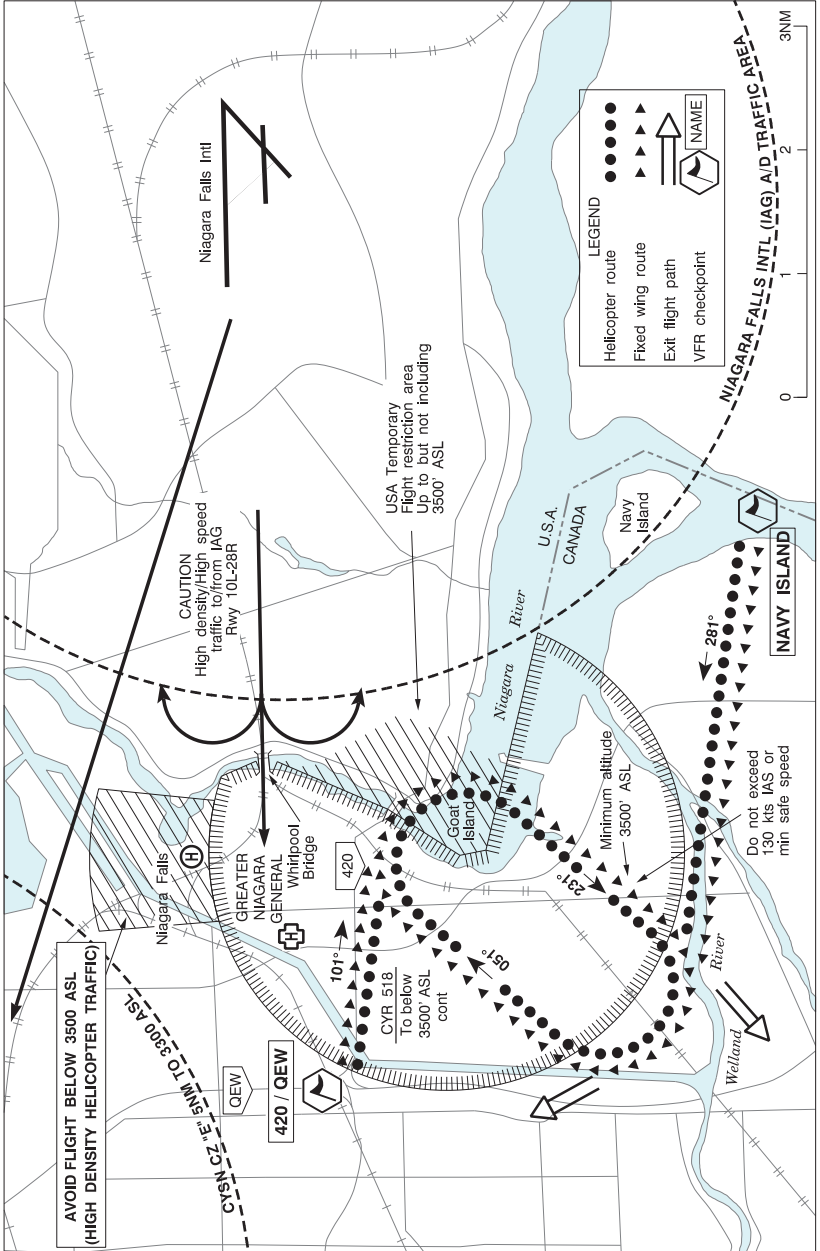
NIAGARA FALLS ON (Heli)

CPQ3



REF	N43 07 09 W79 04 31 Adj 11°W (2012) UTC-5(4) Elev 589' VTA A5000
OPR	Niagara Helicopters Ltd 905-357-5672/5673 Fax 905-374-2856 Cert PPR
PF	B-1,2 avbl 14-22Z† C-3,4,5,6
FLT PLN	
FIG	London 866-WXBRIEF (Toll free within Canada) or 866-541-4104 (Toll free within Canada & USA)
SERVICES	
PVT ADV	Niagara Helicopters 129.475 14-22Z†
HELI DATA	FATO/TLOF 93' x 93' ASPH Safety Area 124' x 124' Max heli overall length 62' Parking Pad H12: 17' x 17' CONC Parking Pad H21: 17' x 17' CONC Parking Pad H22: 17' x 17' CONC Parking Pad V11: 17' x 17' CONC Parking Pad V12: 17' x 17' CONC
RCR	Opr
LIGHTING	RY(LO) RF(FL) ARCAL-129.475
PRO	For flt over falls, see Niagara Falls VTFC. Three arr/dep paths fr/to NE (see sketch). Arr/dep 1 - 040° day use only, Arr/dep 2 - 200° day/night use & Arr/dep 3 - 295° day use only, all slope 8% (H3).
CAUTION	Aerial cable (see sketch).

NIAGARA FALLS VFR TERMINAL PROCEDURES CHART



ONTARIO

AERODROME / FACILITY DIRECTORY

NIAGARA FALLS VFR TERMINAL PROCEDURES CHART (Cont'd)

NAME	IDENT	LAT/LONG
420 / QEW	VCFRQ	N43° 05' 45" W079° 07' 00"
NAVY ISLAND	VCNVY	N43° 02' 18" W079° 01' 00"

PROCEDURES**ALL AIRCRAFT AT 3500' ASL OR ABOVE**

- Prior to **pattern entry and in pattern**: recognition, landing, strobe and/or anti-collision **lights ON**.
- Fly clockwise pattern as depicted.
- Do not exceed 130 kts or minimum safe speed.
- Broadcast altitude, checkpoint & intentions on 122.050 MHz prior to entry & monitor that frequency in pattern.
- Use Niagara Falls Intl Altimeter Setting.

WARNING: This is a VFR procedure "SEE AND BE SEEN".

Pilots are responsible for own separation and collision avoidance.

WARNING: Exit pattern as depicted, straight out, wings level.

CYR518: FLIGHTS IN RESTRICTED AREA**PRIOR WRITTEN AUTHORIZATION IS REQUIRED**

From the Transport Canada, Hamilton TC Centre

Address: TRANSPORT CANADA
HAMILTON TC CENTRE
9300 AIRPORT ROAD, UNIT 450
MOUNT HOPE, ONTARIO
LOR 1W0

NOTE: 10 days notice required/tel: 905-679-3477

GENERAL

CAUTION: Numerous flights in **CYR518**

CAUTION: High speed aircraft departing Niagara Falls, N.Y. in the vicinity of Whirlpool Bridge.

CAUTION: Goat Island may be obscured by mist.

COMMUNICATION FREQUENCIES

PATTERN FREQUENCY		<u>122.050</u>
Niagara Falls N.Y.	ATIS	120.8 ltd hrs
	TWR	118.5 ltd hrs
St. Catharines Radio		123.25 ltd hrs