
FLIGHT PLAN & SITE SURVEY

A 37-3905 CENTRAL ALBERTA RADIO FUN FLYERS (RED DEER)- 7.5 KMS E OF HWY 2 ON TOWNSHIP ROAD 374

July 10, 2026



IMPORTANT NOTICE

Please ensure you have received all required authorizations prior to flight. This Site Survey was created using RPAS Wilco. The user accepts all responsibility for the accuracy of the information.

Terms & Conditions: rpswilco.com/#tnc

Mission Information

A 37-3905 CENTRAL ALBERTA RADIO FUN FLYERS (RED DEER)- 7.5 KMS E OF HWY 2 ON TOWNSHIP ROAD 374

FLIGHT DETAILS

Reference No:	MAAC-37-3905
Project Name:	CENTRAL ALBERTA RADIO FUN FLYERS (RED DEER)
Pilot Name:	MAAC
Pilot Certificate:	
Mission Type:	VLOS
Flight Start:	July 10, 2026 10:48 AM
Flight End:	July 10, 2026 11:48 AM

LOCATION DETAILS

Flight Address:	7.5 KMS E OF HWY 2 ON TOWNSHIP ROAD 374
Latitude:	52° 12' 8.30" N (52.202)
Longitude:	113° 42' 18.60" W (-113.705)
Field Elevation:	2936 ft MSL
Altitude / Radius:	400 ft / 926 m (0.5 nm)
Classification:	UNCONTROLLED
FIR / Contact:	CZEG / 780-890-8397

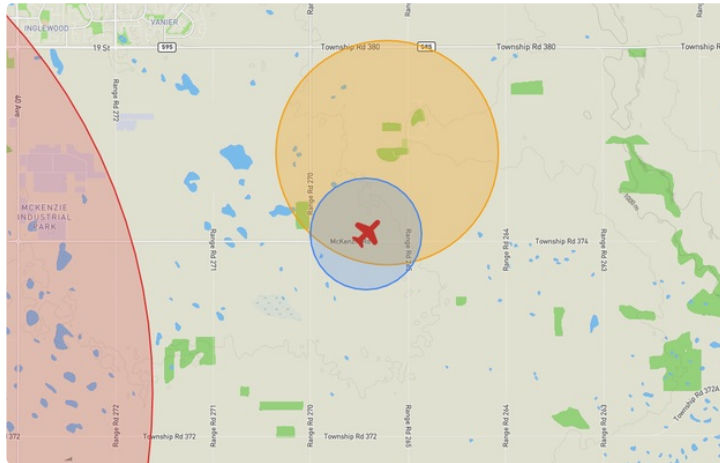
REPORT CONTENTS

Site Survey • Obstacles (if available) • Nearby Aerodromes • Canadian Aviation Regulations • GFA • Aerodrome Supplements • METAR & TAF • NOTAMs • CFS





Flight Map & MODEL Details

MISSION LOCATION SURVEY

FLIGHT AREA MAP



MISSION LOCATION DETAILS

ROLE	LATITUDE	LONGITUDE
 MODEL	52° 12' 8.30" N 52.202	113° 42' 18.60" W -113.705
 Pilot		
 Payload Op.		
 Observer		

Airspace Classification

MISSION LOCATION SURVEY

AIRSPACE MAP



OVERLYING AIRSPACES

Class	Name	Floor	Ceiling
E	T753 Fixed RNAV Route	2200AGL	18000MSL
E	Red Deer, AB [TA]	4000MSL	18000MSL

Planned flight altitude is below the lowest documented airspace layer

NEAREST AERODROMES & DISTANCE FROM OPERATION

LEBLANC (CLB5 - HELIPORT - Reg)	Lat: 52.214	Long: -113.7	1.395KM	0.753NM	N
Operator: MARCEL LEBLANC: PHONE: 403-350-6868, POST: UNKNOWN FIR Contact: 780-890-8397					
ALLAN DALE RESIDENCE (CAD2 - HELIPORT - Reg)	Lat: 52.269	Long: -113.699	7.476KM	4.037NM	N
Operator: ALLAN DALE: PHONE: 403-350-8051, POST: 124-38254 Range Road 265 Red Deer T4E0A2 FIR Contact: 780-890-8397					
RED DEER REGIONAL (CYQF - AERODROME - Cert)	Lat: 52.185	Long: -113.894	13.049KM	7.046NM	W
Operator: RED DEER REGIONAL AIRPORT AUTHORITY: PHONE: 403-886-4388, POST: UNKNOWN FIR Contact: 780-890-8397					

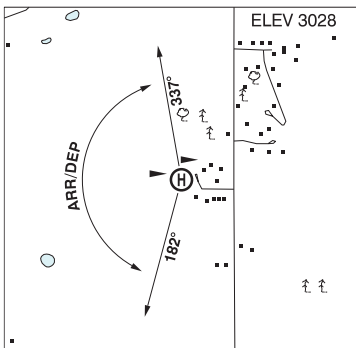
ALBERTA

AERODROME / FACILITY DIRECTORY

RED DEER / LEBLANC AB (Heli)

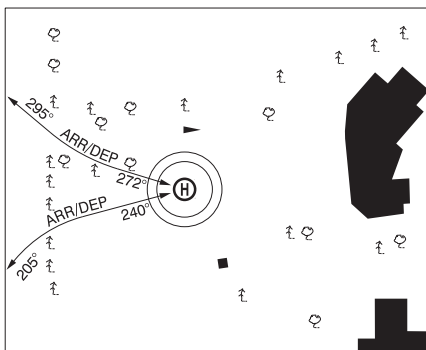
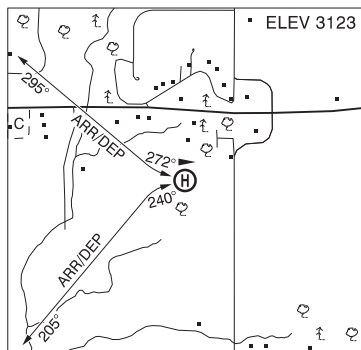
CLB5

REF	N52 12 52 W113 42 00 5.2ESE 14°E (2025) UTC-7(6) Elev 3028' A5005 A5015
OPR	Marcel LeBlanc 403-350-6868 Reg PPR
FLT PLN	
FIC	Edmonton 866-WXBRIEF (Toll free within Canada) or 866-541-4102 (Toll free within Canada & USA)
HELI DATA	FATO 64' dia GRASS/CONC TLOF 40' x 40' CONC Safety Area 75' x 75' Max heli overall length 43'
RCR	Opr Ltd win maint
COMM	
ATF	tfc 118.5 2NM 6100 ASL
PRO	Arr/dep 182° to 337° fr heli.
CAUTION	Trees N and S of heli. Lgtd twr 3763 ASL (450 AGL) 2.3NM NE of heli.



RED DEER / ALLAN DALE RESIDENCE AB (Heli)

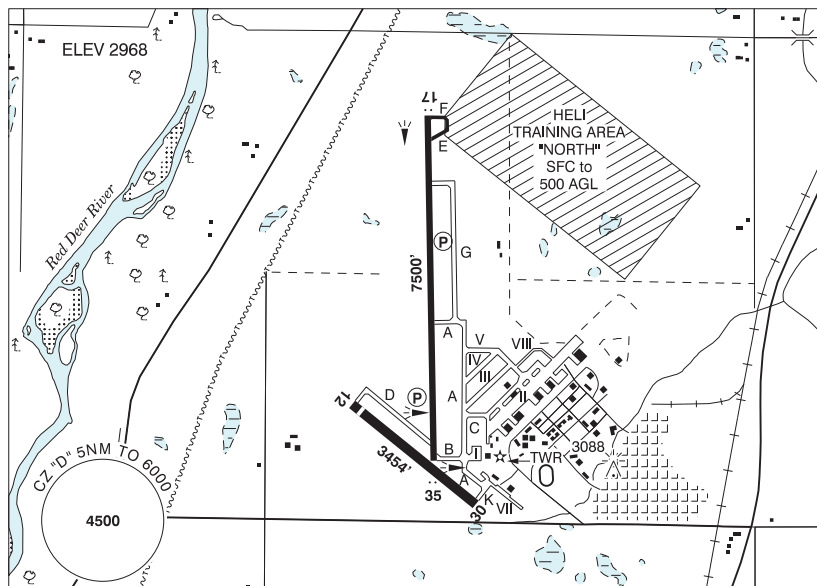
CAD2



REF	N52 16 11 W113 41 59 4.1E 15°E (2015) UTC-7(6) Elev 3123' A5005 A5015
OPR	Allan Dale 403-350-8051 Reg PPR
PF	C-1,2,3,4,5,6
FLT PLN	
FIC	Edmonton 866-WXBRIEF (Toll free within Canada) or 866-541-4102 (Toll free within Canada & USA)
HELI DATA	FATO 58' dia GRASS TLOF 20' x 20' CONC Safety Area 77' dia Max heli overall length 38.4'
COMM	
RCO	Edmonton rdo 123.475 (FISE) 126.7 (bcst)
ATF	tfc 118.5 2NM 6200 ASL
PRO	Arr/dep curved 272° to 295° fr heli, slope 8% (H3), day use only. Arr/dep curved 240° to 205° fr heli, slope 8% (H3), day use only.
CAUTION	Trees on short final on all apch

RED DEER REGIONAL AB

CYQF



REF	N52 11 06 W113 53 40 6SSW 14°E (2016) UTC-7(6) Elev 2968' A5005 A5015 LO2 HI3 CAP
OPR	Red Deer Regional Aprt Authority 403-886-4388 Cert Ldg fees
PF	A-1,2,3,7 C-2,3,4,5,6
FLT PLN	<p>FIG Edmonton 866-WXBRIEF (Toll free within Canada) or 866-541-4102 (Toll free within Canada & USA)</p> <p>ACC Edmonton IFR 888-358-7526</p> <p>WX METAR AUTO H24 (see COMM) WxCam TAF H24, issue times: 00, 06, 12, 18Z.</p>
SERVICES	Call out chg may be levied for one or more svcs
FUEL	100LL, JA, JA-1 (FSII avbl) Hillman Air (100LL only, self serve); Sky Wings Avn (Executive Flt Centre) 15-04Z‡; Tucana Avn
OIL	All
S	1,2,3,5 Tucana Avn
SUP FL	D & A-ice 2 hr PN Tucana Avn, LPOX
JASU	10/15
PVT ADV	Hillman Air 403-886-4187; Sky Wings Avn (Executive Flt Centre) 123.4 403-886-5191 15-04Z‡; Tucana Avn 403-596-6320.
MIL CON	Flight Fuels Limited Partnership 403-596-6320
RWY DATA	Rwy 17(165°)/35(345°) 7500x150 ASPH Rwy 12(115°)/30(295°) 3454x100 ASPH Thld 12 displ 200' Rwy 30 up 0.52% RESA: 17/35 492'
RWY CERT	Rwy 17/35 AGN IIIB Rwy 12/30 AGN II
TWY CERT	Twy D AGN II
RCR	Opr CRFI & Win maint 1330-2200Z‡ Mon-Fri exc hols, O/T 2 hrs PN ctc 403-318-7842. Call out charge may be levied.

ALBERTA

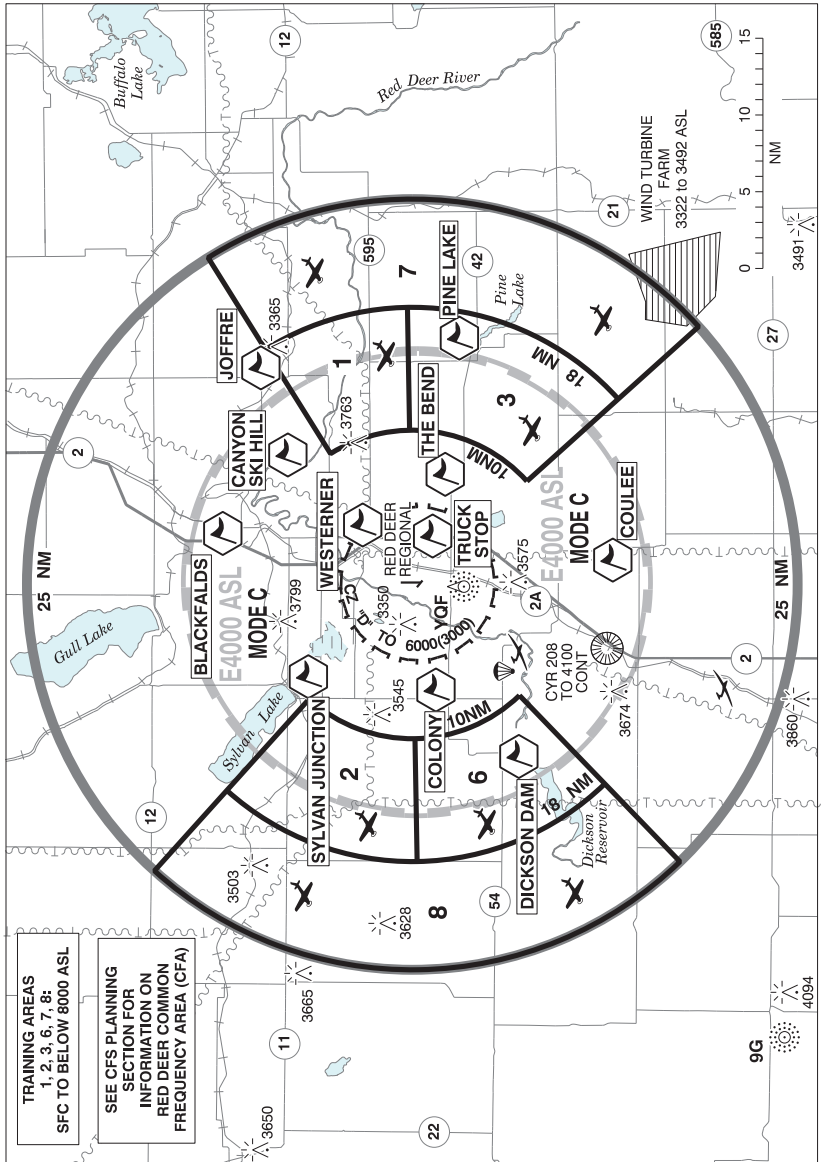
AERODROME / FACILITY DIRECTORY

RED DEER REGIONAL AB (Cont'd)

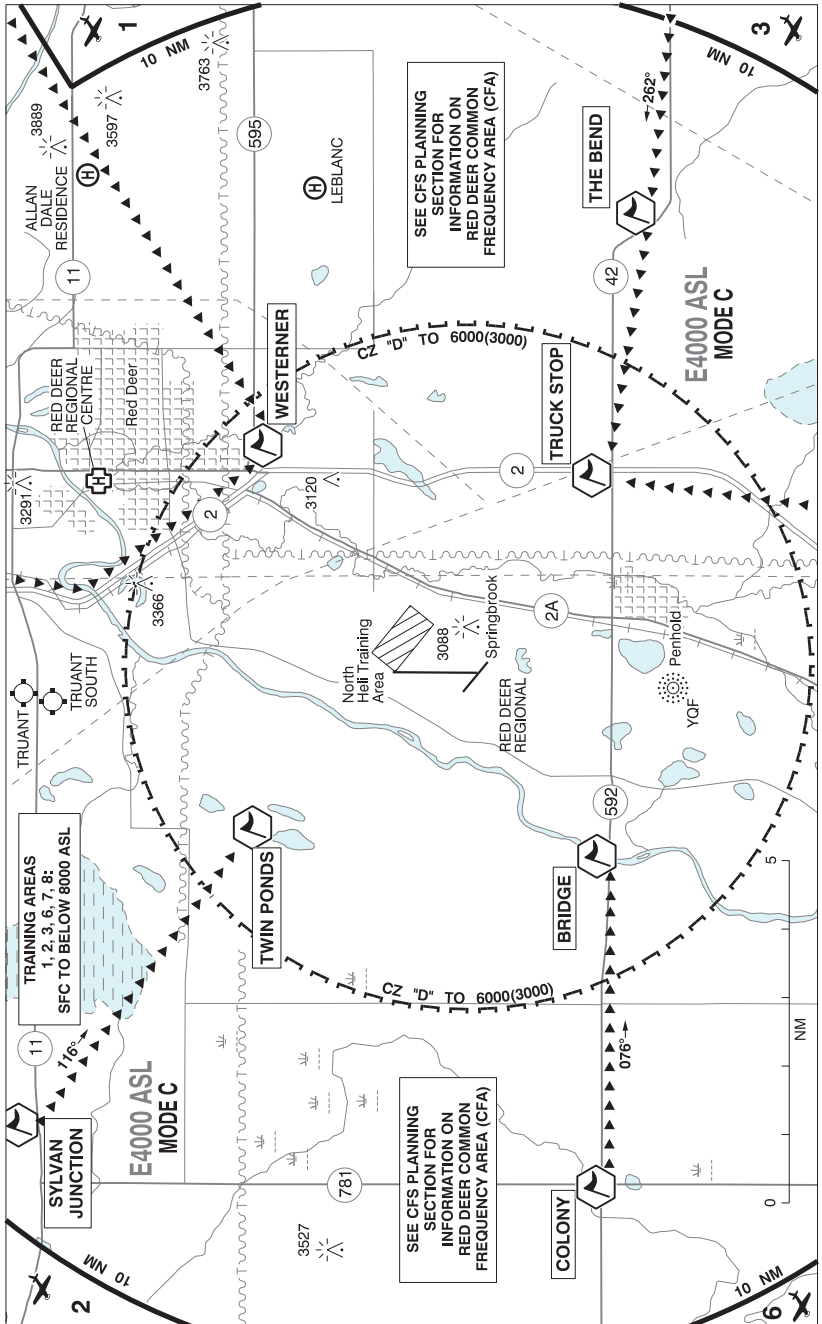
CYQF

LIGHTING	12-(TE ME), 30-(TE ME), 17-AS(TE HI) P2, 35-AS(TE HI) P2 ARCAL-118.5 type K when TWR clsd
COMM	
RCO	Edmonton rdo 123.475 (FISE) 126.7 (bcst)
ATIS	124.0 13-05Z‡
GND	121.9 13-05Z‡
TWR	118.5 (V) 13-05Z‡ (emerg only 403-886-4547)
MF	tfc 118.5 05-13Z‡ 5NM 6000 ASL (CAR 602.98)
PAL	Edmonton Ctr 132.85
AWOS	124.0 05-13Z‡
NAV	
NDB	Red Deer YQF 320 (L) N52 07 42 W113 53 58
DME	Red Deer 6G 113.8 Ch 85 N52 10 52 W113 52 58 (2974') Pvt
PRO	Rgt hand circuits Rwys 12 & 17 (CAR 602.96).
HELI	Use Heli Training Area "NORTH" sfc to 500 AGL.
CAUTION	Wildlife in vic of rwys. Acft at opposite ends of Rwy 17/35 may not be vis to each other. Twy D sfc ruf. Practice IFR approaches in vic Rwy 17/35 extended ctr lines beyond CZ. Extv flt tng within 20NM of A/D, all quadrants to 6500 ASL. Parajumps activity in vic Innisfail A/D 8NM SSW check for NOTAM. Intsv gliding activity to 6400 ASL in vic Olds (Netook) A/D 21NM S by NOTAM. Winch cable may extend from sfc to 5800 ASL (2500 AGL).

RED DEER VFR TERMINAL PROCEDURES CHART



RED DEER VFR TERMINAL PROCEDURES CHART (Cont'd)



ALBERTA

AERODROME / FACILITY DIRECTORY

RED DEER VFR TERMINAL PROCEDURES CHART (Cont'd)

NAME	IDENT	LAT/LONG
BLACKFALDS	VCBFD	N52° 22' 29" W113° 49' 18"
BRIDGE	VCBDG	N52° 08' 39" W113° 58' 05"
CANYON SKI HILL	VCCSH	N52° 18' 14" W113° 41' 00"
COLONY	VCCLY	N52° 08' 40" W114° 05' 49"
COULEE	VCCOU	N51° 57' 44" W113° 51' 32"
DICKSON DAM	VCDSO	N52° 03' 16" W114° 12' 47"
JOFFRE	VCJFF	N52° 19' 59" W113° 31' 54"
PINE LAKE	VCPKE	N52° 07' 08" W113° 28' 50"
SYLVAN JUNCTION	VCSJT	N52° 16' 58" W114° 04' 24"
THE BEND	VCBND	N52° 08' 05" W113° 43' 04"
TRUCK STOP	VCTRS	N52° 08' 41" W113° 49' 22"
TWIN PONDS	VCTWP	N52° 13' 14" W113° 57' 19"
WESTERNER	VCWES	N52° 13' 27" W113° 48' 29"

COMMON FREQUENCY AREA:

Within 25NM of CYQF, and outside of the CZ/MF, pilots should familiarize themselves with the use of the Alberta - Red Deer Common Frequency Area (see CFS Planning Section) and use the common frequency 122.875.

ARRIVAL PROCEDURES

Obtain the ATIS message on 124.0 prior to establishing contact on 118.5.

If able, pilots are required to turn on navigation, anti-collision, and landing lights while operating within the CZ/MF.

During Class D operations (13-05Z±), pilots are expected to follow the instructions assigned by CYQF Tower.