
FLIGHT PLAN & SITE SURVEY

A 46-3914 VALLEY MODEL AERONAUTICS CLUB- VALLEY
MODEL AERONAUTICS FLYING FIELD

July 10, 2026



IMPORTANT NOTICE

Please ensure you have received all required authorizations prior to flight. This Site Survey was created using RPAS Wilco. The user accepts all responsibility for the accuracy of the information.

Terms & Conditions: rpswilco.com/#tnc

Mission Information

A 46-3914 VALLEY MODEL AERONAUTICS CLUB- VALLEY MODEL AERONAUTICS FLYING FIELD

FLIGHT DETAILS

Reference No:	MAAC-46-3914
Project Name:	VALLEY MODEL AERONAUTICS CLUB
Pilot Name:	MAAC
Pilot Certificate:	
Mission Type:	VLOS
Flight Start:	July 10, 2026 10:48 AM
Flight End:	July 10, 2026 11:48 AM

LOCATION DETAILS

Flight Address:	VALLEY MODEL AERONAUTICS FLYING FIELD
Latitude:	53° 19' 3.73" N (53.318)
Longitude:	114° 58' 25.27" W (-114.974)
Field Elevation:	2680 ft MSL
Altitude / Radius:	400 ft / 926 m (0.5 nm)
Classification:	UNCONTROLLED
FIR / Contact:	CZEG / 780-890-8397

REPORT CONTENTS

Site Survey • Obstacles (if available) • Nearby Aerodromes • Canadian Aviation Regulations • GFA • Aerodrome Supplements • METAR & TAF • NOTAMs • CFS

Airspace Classification

MISSION LOCATION SURVEY

AIRSPACE MAP



OVERLYING AIRSPACES

Class	Name	Floor	Ceiling
E	T980 Fixed RNAV Route	2200AGL	18000MSL
B	Edmonton, AB a) [CAE]	12500MSL	18000MSL

Planned flight altitude is below the lowest documented airspace layer

NEAREST AERODROMES & DISTANCE FROM OPERATION

DRAYTON VALLEY INDUSTRIAL (CER3 - AERODROME - Reg)	Lat: 53.263	Long: -114.958	6.162KM	3.327NM	S
Operator: PRAA: PHONE: 780-514-8013, PHONE: 866-719-9059, POST: UNKNOWN FIR Contact: 780-890-8397					
DRAYTON VALLEY (HOSP AND CARE CENTRE) (CFV9 - HELIPORT - Cert)	Lat: 53.212	Long: -114.971	11.731KM	6.334NM	S
Operator: ALBERTA HEALTH SERVICES: PHONE: 780-542-5321, POST: UNKNOWN FIR Contact: 780-890-8397					
LOCHE MIST FARMS (CJJ3 - AERODROME - Reg)	Lat: 53.546	Long: -115.261	31.746KM	17.141NM	NW
Operator: JENS JORGENSEN: PHONE: 780-325-2661, PHONE: 780-441-5451, POST: Box 267 Wildwood T0E 2M0 FIR Contact: 780-890-8397					

ALBERTA

AERODROME / FACILITY DIRECTORY

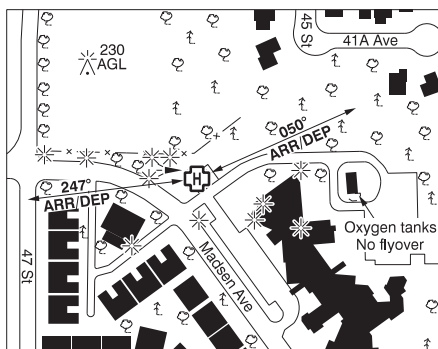
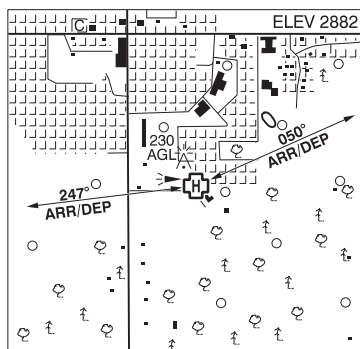
DRAYTON VALLEY INDUSTRIAL AB

CER3

REF	N53 15 48 W114 57 31 2.5NE 16°E (2012) UTC-7(6) Elev 2774' A5014 A5015 LO2 CAP		ELEV 2774
OPR	PRAA 780-514-8013 or 866-719-9059 Reg		
PF	B-1 C-2,3,4,5,6		
FLT PLN			
 			
 			
 			
SERVICES			
 			
 			
 			
RWY DATA	Rwy 14(144°)/32(324°) 5065x75 ASPH Rwy 14 down 0.39% Thld 14 displ 1492' AGN II		
 	Opr Ltd maint		
LIGHTING	14-(TE ME) P1, 32-(TE ME) P1 ARCAL-122.8 type K		
COMM			
 	UNICOM ltd hrs O/T tfc 122.8 5NM 5800 ASL		
CAUTION	Act on opposite ends of rwy may not be visible to each other. Wild animals may stray onto rwy. RPAS activity 3.3 NM NNW of A/D max 400 AGL. Grass tkof/ldg area 2130'x50' adj E Rwy 14/32, SE of Twy A. May be soft when wet. No win maint.		

DRAYTON VALLEY (HOSP & CARE CENTRE) AB (Heli)

CFV9



REF	N53 12 44 W114 58 15 16°E (2013) UTC-7(6) Elev 2882' A5014 A5015 CAP
OPR	Alberta Health Services 780-542-5321 Cert NVIS OPS AUTH PPR
PF	C-1,2,3,4,5,6
FLT PLN	
FIC	Edmonton 866-WXBRIEF (Toll free within Canada) or 866-541-4102 (Toll free within Canada & USA)
ACC	Edmonton IFR 888-358-7526
WX	ALTIMETER ltd hrs (see COMM)
HELI DATA	FATO 86' dia non-supporting TLOF 57' dia CONC Safety Area 115' dia Elevated Max heli weight 17,000 lbs, Max heli overall length 57.4' (CAR 602.96)
LIGHTING	RY(LO) PN
COMM	
ATF	UNICOM (AU) ltd hrs O/T tfc 122.8 5NM centered on Drayton Valley Industrial A/D 3.3NM N 5800 ASL
PRO	Arr/dep 050° & 247° fr heli (H1), NVIS rqr'd for night use, all flt paths (CAR 602.96)
CAUTION	Antenna twr aprx 366' NW heli 3082 ASL (230 AGL). Lgtd and marked P-lines adj S and W of heli. Lgtd and marked lgt poles 28 AGL E, SE and S of heli.

ALBERTA

AERODROME / FACILITY DIRECTORY

WILDWOOD / LOCHE MIST FARMS AB

CJJ3

REF	N53 32 47 W115 15 38 3.9SSW 16°E (2011) UTC-7(6) Elev 2880' A5014	
OPR	Jens Jorgensen 780-325-2661 or 780-441-5451 Reg	
PF	B-1 C-2,5	
FLT PLN		
FIC	Edmonton 866-WXBRIEF (Toll free within Canada) or 866-541-4102 (Toll free within Canada & USA)	
SERVICES		
OIL	15W50	
RWY DATA	Rwy 07(071°)/25(251°) 2300x60 GRASS	
RCR	Opr Ltd win maint.	
LIGHTING	07-(RR) 25-(RR) Lgtd WI avbl O/R	
COMM		
ATF	tfc 123.2 5NM 5900 ASL	
CAUTION	Possible maint eqpt on rwy. Acft entering via twy may not be visible fr other end of rwy. Marked p-line aprx 314' E Thld 25. 10' fence 287' fr Thld 07. Trees 615' fr Thld 07. Parallel fences 120' apart along both sides of rwy. Wildlife in vic of rwy.	