
FLIGHT PLAN & SITE SURVEY

B 49-3919 CHARLOTTETOWN RADIO CONTROL FLYING
CLUB- CLUB'S PRIMARY FIELD

July 10, 2026



IMPORTANT NOTICE

Please ensure you have received all required authorizations prior to flight. This Site Survey was created using RPAS Wilco. The user accepts all responsibility for the accuracy of the information.

Terms & Conditions: rpaswilco.com/#tnc

Mission Information

B 49-3919 CHARLOTTETOWN RADIO CONTROL FLYING CLUB- CLUB'S PRIMARY FIELD

FLIGHT DETAILS

Reference No:	MAAC-49-3919
Project Name:	CHARLOTTETOWN RADIO CONTROL FLYING CLUB
Pilot Name:	MAAC
Pilot Certificate:	
Mission Type:	VLOS
Flight Start:	July 10, 2026 01:48 PM
Flight End:	July 10, 2026 02:48 PM

LOCATION DETAILS

Flight Address:	CLUB'S PRIMARY FIELD
Latitude:	46° 11' 37.23" N (46.194)
Longitude:	63° 1' 39.48" W (-63.028)
Field Elevation:	16 ft MSL
Altitude / Radius:	400 ft / 926 m (0.5 nm)
Classification:	UNCONTROLLED
FIR / Contact:	CZQM / 506-867-7173

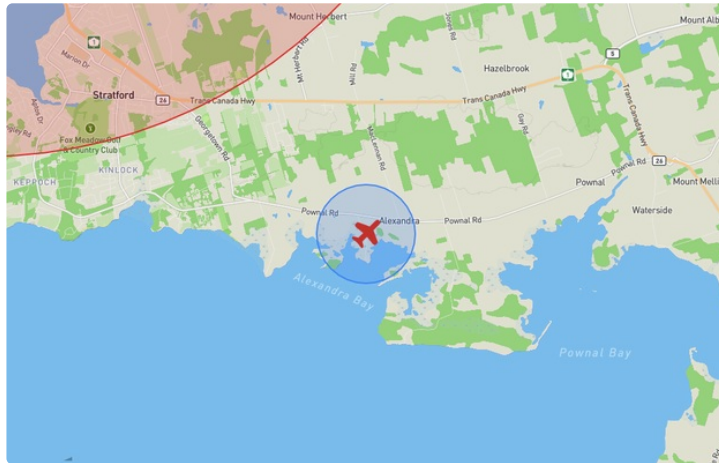
REPORT CONTENTS

Site Survey • Obstacles (if available) • Nearby Aerodromes • Canadian Aviation Regulations • GFA • Aerodrome Supplements • METAR & TAF • NOTAMs • CFS

Flight Map & MODEL Details

MISSION LOCATION SURVEY

FLIGHT AREA MAP



MISSION LOCATION DETAILS

ROLE	LATITUDE	LONGITUDE
MODEL	46° 11' 37.23" N 46.194	63° 1' 39.48" W -63.028
Pilot		
Payload Op.		
Observer		

Airspace Classification

MISSION LOCATION SURVEY

AIRSPACE MAP



OVERLYING AIRSPACES

Class	Name	Floor	Ceiling
E	Charlottetown, PE a) [TA]	700AGL	1800MSL
E	Charlottetown, PE b) [TA]	1900AGL	1800MSL

Planned flight altitude is below the lowest documented airspace layer

NEAREST AERODROMES & DISTANCE FROM OPERATION

CHARLOTTETOWN (QUEEN ELIZABETH HOSPITAL) (CDV3 - HELIPORT - Cert) Lat: 46.256 Long: -63.099 8.797KM 4.75NM NW

Operator: QUEEN ELIZABETH HOSPITAL: PHONE: 902-314-8128, PHONE: 902-894-2031, PHONE: 902-894-2032, POST: UNKNOWN **FIR Contact:** 506-867-7173

CHARLOTTETOWN (CYYG - AERODROME - Cert) Lat: 46.29 Long: -63.121 12.9KM 6.965NM NW

Operator: CHARLOTTETOWN AIRPORT AUTHORITY INCORPORATED: PHONE: 902-394-4168, PHONE: 902-566-7997, POST: UNKNOWN **FIR Contact:** 506-867-7173

PRINCE EDWARD ISLAND

AERODROME / FACILITY DIRECTORY

CHARLOTTETOWN (QUEEN ELIZABETH HOSP) PE (Heli)

CDV3

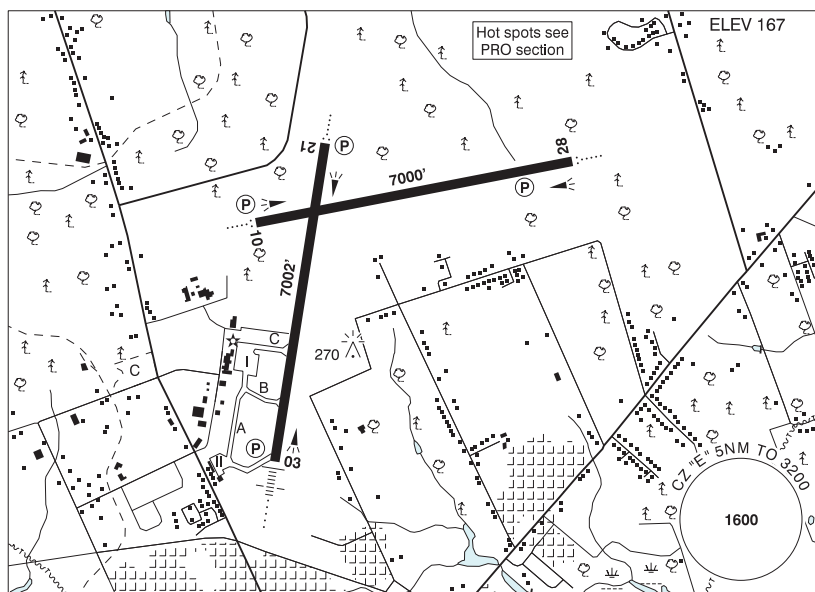
REF	N46 15 20 W63 05 56 Adj E 18°W (2014) UTC-4(3) Elev 20' A5003	
OPR	Queen Elizabeth Hosp 902-894-2031, 902-894-2032, 902-314-8128 Cert PPR	
FLT PLN		
FIC	London 866-WXBRIEF (Toll free within Canada) or 866-541-4104 (Toll free within Canada & USA)	
ACC	(IFR only) Moncton 506-867-7177 or 866-480-8200.	
HELI DATA	FATO/TLOF 78.7' dia ASPH Safety Area 105' dia Max heli overall length 52.5'	
RCR	Security 902-894-2001	
LIGHTING	RF(FH)	
COMM		
RCO	London rdo 123.55 (FISE) 126.7 (bcst)	
MF	Charlottetown rdo 118.0 5NM centred on Charlottetown land A/D 2.3NM SE 3200 ASL (CAR 602.98)	
PRO	Arr/dep 164° fr heli, slope 12% (H2)	
CAUTION	140' unlighted Power Plant stacks 250' NE of heli.	

PRINCE EDWARD ISLAND

AERODROME / FACILITY DIRECTORY

CHARLOTTETOWN PE

CYYG



REF	N46 17 24 W63 07 16 3N 18°W (2014) UTC-4(3) Elev 167' A5003 LO8 HI6 CAP OC
OPR	Charlottetown Airport Authority Inc. 902-566-7997 1000-0415Z± O/T PPR 902-394-4168 Cert
PF	A-1,2,3,6,7,8 C-4,5
CUST	AOE/60 (368 with staged off-loading) 888-226-7277 12-04Z±
FLT PLN	<p>FIG London 866-WXBRIEF (Toll free within Canada) or 866-541-4104 (Toll free within Canada & USA)</p> <p>ACC (IFR only) Moncton 506-867-7177 or 866-480-8200.</p> <p>WX METAR H24. TAF H24, issue times: 00, 06, 12, 18Z.</p>
SERVICES	Call out chg may be levied for one or more svcs.
FUEL	100LL 11-01Z± ctc 902-394-4168, JA-1 (FSII avbl) 09-00Z± O/T call out chg will apply. Fax/tel: 902-566-3835. Duty tel: 902-629-0906 aft hr 902-393-1792
OIL	All
S	1,2
ARFF	DESIGNATED CAT 6 (CAT 7, 2 hr PN) 1000-0415Z±, O/T call out chg.
SUP FL	D & A-ice
MIL CON	Menzies Aviation/ASIG Canada 902-393-1792
RWY DATA	Rwy 03(027°)/21(207°) 7002x150 ASPH Rwy 10(097°)/28(277°) 7000x150 ASPH RESA: 03/21 492'; 10/28 492'
RWY CERT	Rwy 03 RVR 1200(1/4sm)/Rwy 21 RVR 1200(1/4sm) AGN IV Rwy 10 RVR 1200(1/4sm) Day only/Rwy 28 RVR 1200(1/4sm) Day only AGN IV
APRON	Apron I: Uncontrolled. Avbl to sked pax flt and 705 ops, all other ppr 902-566-7997 for aprt parking. Numbered parking stands req marshall in and push-back out (Stands 1,2,3,5 and 7). All acft must yield to acft in push-back from ATB.
RCR	Opr AMSCR 1000-0415Z±

PRINCE EDWARD ISLAND

AERODROME / FACILITY DIRECTORY

CHARLOTTETOWN PE (Cont'd)

CYYG

LIGHTING	03-AN(TE HI) P2, 21-AO(TE HI) P2, 10-AO(TE ME) P2, 28-AO(TE ME) P2
COMM	
RADIO	118.0 PTC avbl (E) (emerg only 902-368-2210)
RCO	London rdo 123.55 (FISE) 126.7 (bcst)
MF	rdo 118.0 5NM 3200 ASL (CAR 602.98)
PAL	Moncton Ctr 135.65
NAV	
DME	YYG 113.8 Ch 85 N46 16 58 W63 07 42 (177')
ILS	IYG 110.9 (Rwy 03) RVR
PRO	Caution during win ops: Twy C may be the only serviceable twy. Pilots should refer to Canadian Airport Charts (CAC) to obtain details on established hot spots, prior to operating on maneuvering areas. CAC are available for free on the NAV CANADA website.