

---

# FLIGHT PLAN & SITE SURVEY

---

B 50-3923 MINIATURE AIRCRAFT SOCIETY OF TRURO-  
TRURO

July 10, 2026



**IMPORTANT NOTICE**

Please ensure you have received all required authorizations prior to flight. This Site Survey was created using RPAS Wilco. The user accepts all responsibility for the accuracy of the information.

Terms & Conditions: [rpswilco.com/#tnc](https://rpswilco.com/#tnc)

# Mission Information

B 50-3923 MINIATURE AIRCRAFT SOCIETY OF TRURO- TRURO

## FLIGHT DETAILS

Reference No:	<b>MAAC-50-3923</b>
Project Name:	<b>MINIATURE AIRCRAFT SOCIETY OF TRURO</b>
Pilot Name:	<b>MAAC</b>
Pilot Certificate:	
Mission Type:	<b>VLOS</b>
Flight Start:	<b>July 10, 2026 01:48 PM</b>
Flight End:	<b>July 10, 2026 02:48 PM</b>

## LOCATION DETAILS

Flight Address:	<b>TRURO</b>
Latitude:	<b>45° 22' 40.02" N ( 45.378 )</b>
Longitude:	<b>63° 17' 38.12" W ( -63.294 )</b>
Field Elevation:	<b>26 ft MSL</b>
Altitude / Radius:	<b>400 ft / 926 m ( 0.5 nm )</b>
Classification:	<b>UNCONTROLLED</b>
FIR / Contact:	<b>CZQM / 506-867-7173</b>

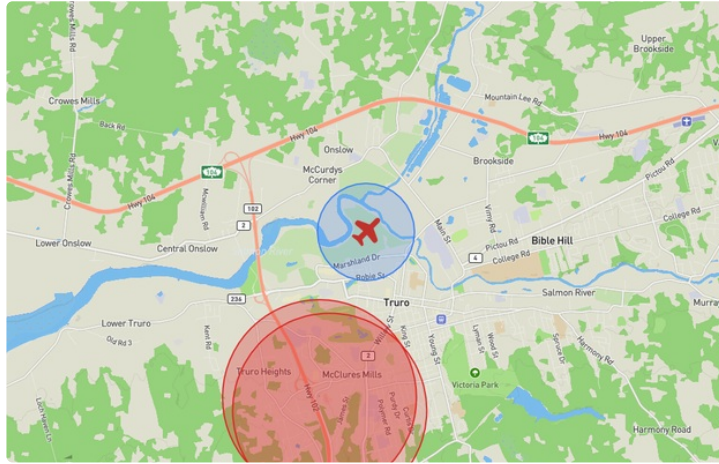
## REPORT CONTENTS

Site Survey • Obstacles (if available) • Nearby Aerodromes • Canadian Aviation Regulations • GFA • Aerodrome Supplements • METAR & TAF • NOTAMs • CFS





# Flight Map & MODEL Details

MISSION LOCATION SURVEY

## FLIGHT AREA MAP



## MISSION LOCATION DETAILS

ROLE	LATITUDE	LONGITUDE
 MODEL	45° 22' 40.02" N 45.378	63° 17' 38.12" W -63.294
 Pilot		
 Payload Op.		
 Observer		

# Airspace Classification

MISSION LOCATION SURVEY

## AIRSPACE MAP



## OVERLYING AIRSPACES

Class	Name	Floor	Ceiling
E	T827 Fixed RNAV Route	2200AGL	18000MSL
D	Halifax, NS c) [TCA]	2900MSL	12500MSL

Planned flight altitude is below the lowest documented airspace layer

## NEAREST AERODROMES & DISTANCE FROM OPERATION

TRURO (COLCHESTER HEALTH CENTRE) (CEH9 - HELIPORT - Cert) Lat: 45.349 Long: -63.305 3.274KM 1.768NM S

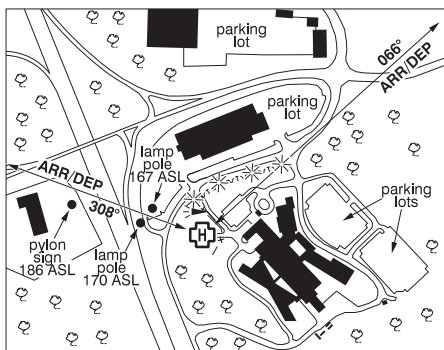
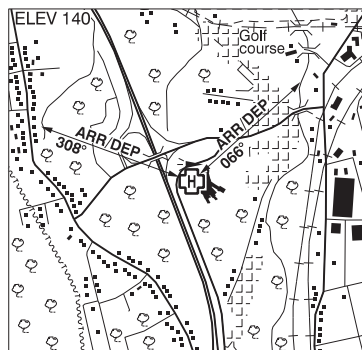
**Operator:** COLCHESTER EAST HANTS HEALTH CENTRE: PHONE: 902-893-4321, PHONE: 902-893-5554 +4222222, POST: UNKNOWN **FIR Contact:** 506-867-7173

DEBERT (CCQ3 - AERODROME - Reg) Lat: 45.419 Long: -63.461 13.841KM 7.474NM W

**Operator:** DEBERT FLIGHT CENTER: PHONE: 902-662-2228, PHONE: 902-758-5177, PHONE: 902-897-3175, POST: 44 Spitfire Rd Debert B0M1G0 **FIR Contact:** 506-867-7173

## TRURO (COLCHESTER HEALTH CENTRE) NS (Heli)

CEH9



<b>REF</b>	N45 20 59 W63 18 20 1.3WSW 18°W (2013) UTC-4(3) Elev 140' A5003
<b>OPR</b>	Colchester East Hants Health Centre 902-893-4321; O/T 902-893-5554 ext 4222222 Cert PPR
<b>PF</b>	A-1,4 C-2,3,5,6
<b>FLT PLN</b>	
<b>FIC</b>	London 866-WXBRIEF (Toll free within Canada) or 866-541-4104 (Toll free within Canada & USA)
<b>ACC</b>	(IFR only) Moncton 506-867-7177 or 866-480-8200
<b>HELI DATA</b>	FATO/TLOF 79' dia ASPH Safety Area 105' Max heli overall length 52.49'
<b>RCR</b>	Opr
<b>LIGHTING</b>	RW(LO) green
<b>COMM</b>	
<b>ATF</b>	tfc 123.0 5NM 2900 ASL
<b>PRO</b>	Arr/dep 066° fr heli, Slope 12% (H2). Arr/dep 308° fr heli (H1).
<b>CAUTION</b>	Heli lies within CYR747 PPR Opr. P-Line N to NE of pad ball marked and lit (portion of P-Line btwn the lit power poles under 308° arr/dep path is buried). Power and lamp poles E of pad marked and lit. Civic centre NE of pad marked with obst lights. Roadway (hosp entry drive) E of heli. Sloped hillside NW of pad. Treed area on embankment, to aprx 65' abv pad elev W of hosp aprx 120' S of pad.

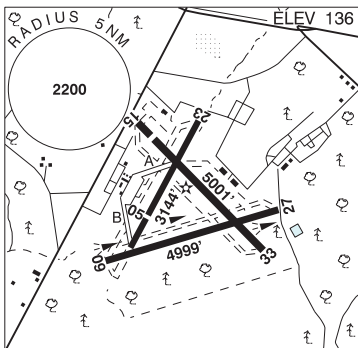
**NOVA SCOTIA**

**AERODROME / FACILITY DIRECTORY**

**DEBERT NS**

**CCQ3**

<b>REF</b>	N45 25 09 W63 27 41 18°W (2013) UTC-4(3) Elev 136' A5003 LO8 HI6 CAP
<b>OPR</b>	Debert Flight Center 902-662-2228 or 902-897-3175, 902-758-5177 Reg
<b>PF</b>	A-7 B-1 C-2 D-3,4,5,6
<b>CUST</b>	AEO/25 888-226-7277 12-02Z†; AOE/CAN
<b>FLT PLN</b>	<p><b>FIC</b> London 866-WXBRIEF (Toll free within Canada) or 866-541-4104 (Toll free within Canada &amp; USA)</p> <p><b>ACC</b> (IFR only) Moncton 506-867-7177 or 866-480-8200.</p> <p><b>WX</b> AUTO H24 (see COMM) WxCam</p>



<b>SERVICES</b>	
<b>FUEL</b>	100LL, JA
<b>OIL</b>	15W50
<b>RWY DATA</b>	<p>Rwy 05(048°)/23(228°) 3144x150 asphalt Rwy 23 down 0.53%</p> <p>Rwy 09(091°)/27(271°) 4999x150 asphalt AGN IIIA</p> <p>Rwy 15(153°)/33(333°) 5001x150 asphalt Thld 15 displ 497'.</p>
<b>RCR</b>	Opr Ltd win maint
<b>LIGHTING</b>	09-(TE LO), 27-(TE LO) ARCAL-123.0 type J PN
<b>COMM</b>	
<b>ATF</b>	UNICOM ltd hrs O/T tfc 123.0 5NM 3100 ASL
<b>ARR</b>	Halifax Tml 119.2
<b>DEP</b>	Halifax Tml 119.2
<b>AUTO</b>	122.275
<b>PRO</b>	Refer to Halifax/Stanfield VTPC for info on local tng areas and Class D airspace. Rgt hand circuits auth for gliders & tow planes (CAR 602.96). <b>DO NOT OVERFLY AERODROME</b> dur glider ops. Glider ops 123.0 dur glider activity.
<b>CAUTION</b>	<p><b>GLIDER:</b> Glider ops are sporadic throughout the year. Vehicle &amp; acft launching.</p> <p><b>TWYS:</b> All twys ruf.</p> <p><b>RWY:</b> Rwy 05/23 surfaces deteriorating. 2000' abandoned portion of Rwy 05/23 suitable for taxi only.</p> <p>Lgtd twr 407 ASL (295 AGL) aprx 1.8NM SW.</p>