
FLIGHT PLAN & SITE SURVEY

E 83-3982 STONEY CREEK HAWKS- CLUB MEETING HALL -
890 QUEENSTON RD. STONEY CREEK

July 10, 2026



IMPORTANT NOTICE

Please ensure you have received all required authorizations prior to flight. This Site Survey was created using RPAS Wilco. The user accepts all responsibility for the accuracy of the information.

Terms & Conditions: rpaswilco.com/#tnc

Mission Information

E 83-3982 STONEY CREEK HAWKS- CLUB MEETING HALL - 890 QUEENSTON RD. STONEY CREEK

FLIGHT DETAILS

Reference No:	MAAC-83-3982
Project Name:	STONEY CREEK HAWKS
Pilot Name:	MAAC
Pilot Certificate:	
Mission Type:	VLOS
Flight Start:	July 10, 2026 12:50 PM
Flight End:	July 10, 2026 01:50 PM

LOCATION DETAILS

Flight Address:	CLUB MEETING HALL - 890 QUEENSTON RD. STONEY CREEK
Latitude:	43° 13' 35.36" N (43.226)
Longitude:	79° 45' 27.04" W (-79.758)
Field Elevation:	279 ft MSL
Altitude / Radius:	400 ft / 926 m (0.5 nm)
Classification:	UNCONTROLLED
FIR / Contact:	CZYZ / 905-676-4509

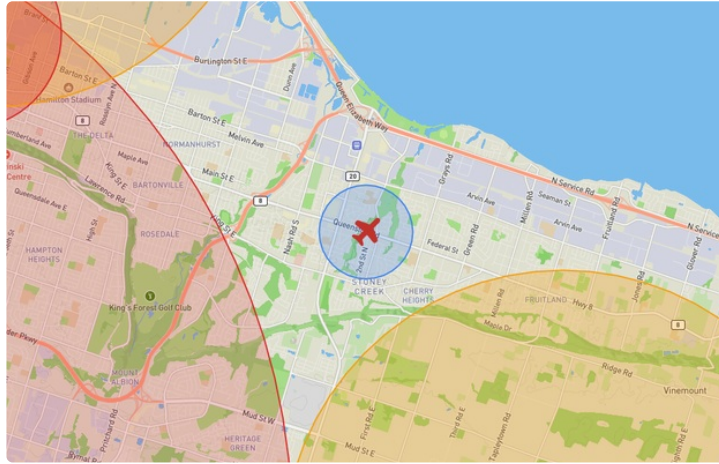
REPORT CONTENTS

Site Survey • Obstacles (if available) • Nearby Aerodromes • Canadian Aviation Regulations • GFA • Aerodrome Supplements • METAR & TAF • NOTAMs • CFS





Flight Map & MODEL Details

MISSION LOCATION SURVEY

FLIGHT AREA MAP



MISSION LOCATION DETAILS

ROLE	LATITUDE	LONGITUDE
 MODEL	43° 13' 35.36" N 43.226	79° 45' 27.04" W -79.758
 Pilot		
 Payload Op.		
 Observer		

Airspace Classification

MISSION LOCATION SURVEY

AIRSPACE MAP



OVERLYING AIRSPACES

Class	Name	Floor	Ceiling
E	3.4.1-43 [TA]	700AGL	18000MSL
E	Southern Ontario Low Level Control Area a) [CAE]	2500MSL	6500MSL

Planned flight altitude is below the lowest documented airspace layer

NEAREST AERODROMES & DISTANCE FROM OPERATION

STONEY CREEK (CPF6 - AERODROME - Reg)	Lat: 43.169	Long: -79.709	7.444KM	4.019NM	SE
Operator: 2866264 ONTARIO INC.: PHONE: 905-578-0689, POST: UNKNOWN FIR Contact: 905-676-4509					
HAMILTON HARBOUR (CHH2 - WATERDROME - Reg)	Lat: 43.299	Long: -79.85	10.98KM	5.929NM	NW
Operator: PETER STEWART: PHONE: 905-379-5263, POST: UNKNOWN FIR Contact: 905-676-4509					
HAMILTON (GEN HOSPITAL) (CPK3 - HELIPORT - Mil)	Lat: 43.262	Long: -79.855	8.792KM	4.747NM	NW
Operator: HAMILTON GEN HOSPITALS: PHONE: 905-521-2100, POST: UNKNOWN FIR Contact: 905-676-4509					

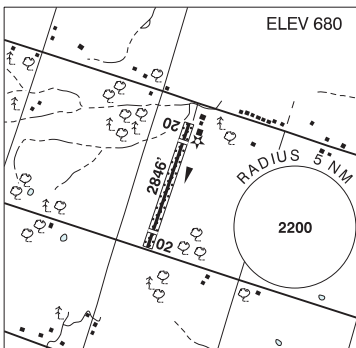
ONTARIO

AERODROME / FACILITY DIRECTORY

STONEY CREEK ON

CPF6

REF	N43 10 10 W79 42 35 2E 10°W UTC-5(4) Elev 680' VTA A5000
OPR	2866264 Ontario Inc. 905-578-0689 Reg PPR
PF	C-2,3,4,5,6 D-1
FLT PLN	FIC London 866-WXBRIEF (Toll free within Canada) or 866-541-4104 (Toll free within Canada & USA)
RWY DATA	Rwy 02/20 2846x60 GRASS/ASPH, centre 25' ASPH. RCR Thld 02 displ 362'. Thld 20 displ 420' Opr Ltd win maint Rwy 02/20.
COMM	ATF tfc 122.8 5NM 3700 ASL
CAUTION	Ditches at Thlds 02/20



CANADA WATER AERODROME SUPPLEMENT

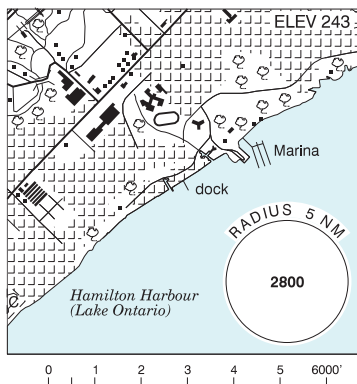
Effective 0901Z 19 March 2026 to 0901Z 18 February 2027

AERODROME/FACILITY DIRECTORY B23

BURLINGTON / HAMILTON HARBOUR ON

CHH2

REF	N43 17 56 W79 50 59 2.72SW 10°W (2014) UTC-5(4) Elev 243' VTA A5000
OPR	Peter Stewart 905-379-5263 Reg PPR
PF	C-2,3,4,5,6
FLT PLN	FIG London 866-WXBRIEF (Toll free within Canada) or 866-541-4104 (Toll free within Canada & USA)
SERVICES	S 7
A/D DATA	Open water Apr-Oct, mud sand bottom, depth 4'.
COMM	ATF tfc 122.8 2NM excluding Hamilton CZ 3300 ASL
CAUTION	Lgt'd twr 1787 ASL (1000 AGL) aprx 5NM WNW of A/D.

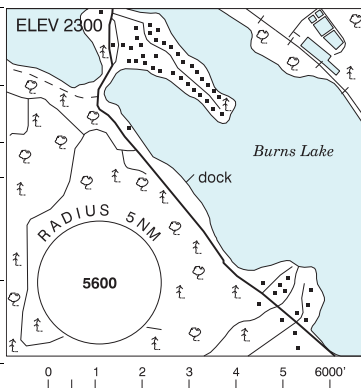


BURNEGIE BAY ON — See LAKE JOSEPH / BURNEGIE BAY

BURNS LAKE (LD AIR) BC

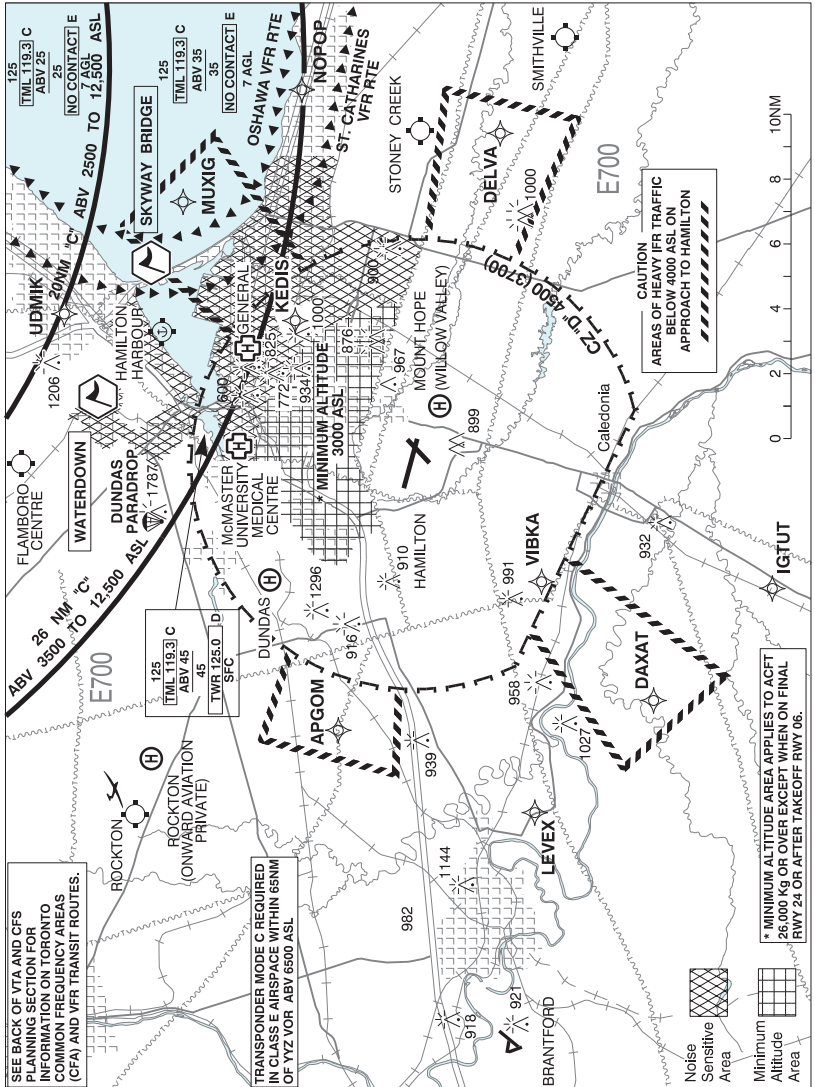
CLD3

REF	N54 12 37 W125 45 27 1.4SSE 19°E (2011) UTC-8(7) Elev 2300' A5013
OPR	Lakes District Air Svcs 250-692-3229 Reg PN
PF	B-1,3 C-2,4,5,6
FLT PLN	FIG Kamloops 866-WXBRIEF (Toll free within Canada) or 866-541-4101 (Toll free within Canada & USA)
SERVICES	PN
FUEL	100LL
OIL	25-60, 15W50, 20-50
A/D DATA	Open water May to mid-Nov. Depth 8' at dock, muddy bottom.
COMM	ATF tfc 123.2 5NM 5300 ASL
PRO	Avoid circuit over town and tkof in front of houses on lake.
CAUTION	Burns Lake land A/D aprx 7NM NW. Heli status unkn 1.5NM N. Twr on hill abv dock 150 AGL.



BUTTERFLY LAKE ON — See PORT CARLING / BUTTERFLY LAKE

HAMILTON VFR TERMINAL PROCEDURES CHART



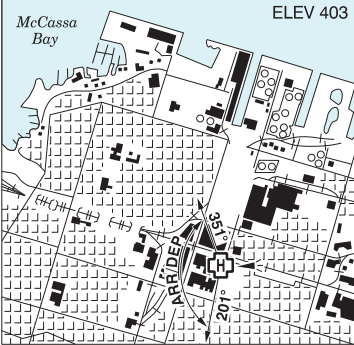
NAME	IDENT	LAT/LONG
SKYWAY BRIDGE	VCBBR	N43° 18' 00" W079° 47' 45"
WATERDOWN	VCWTD	N43° 19' 45" W079° 53' 15"

ONTARIO

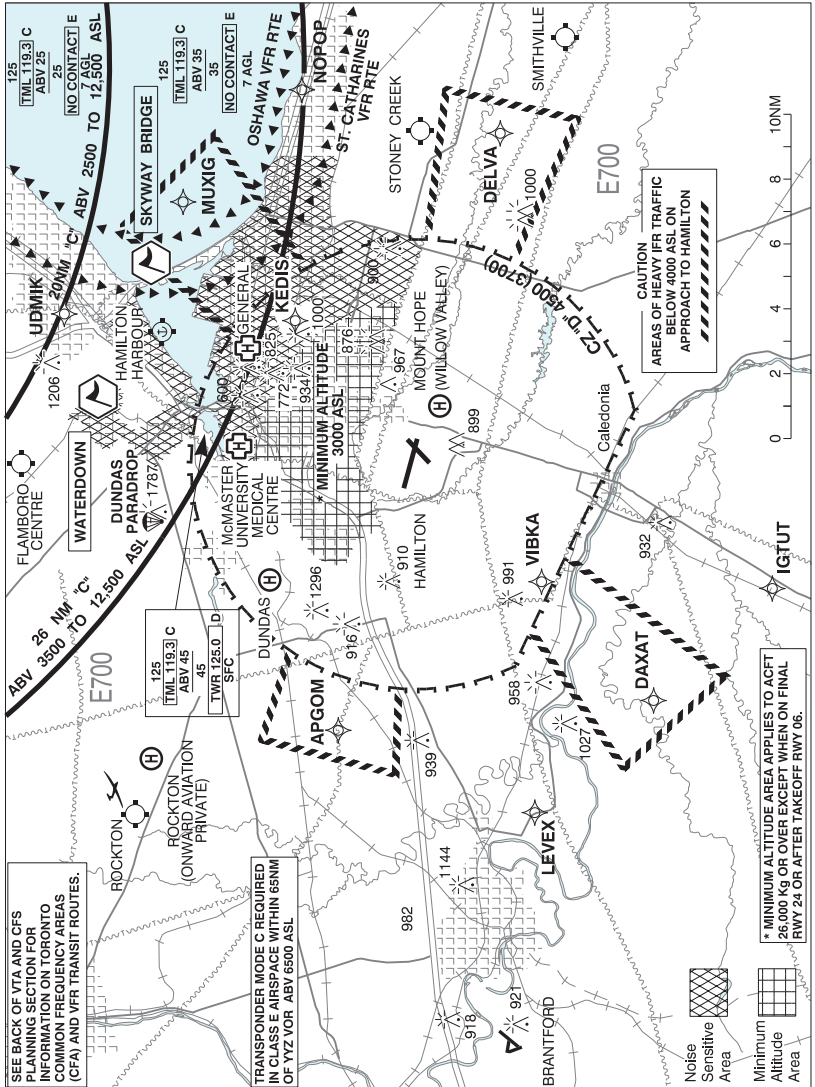
AERODROME / FACILITY DIRECTORY

HAMILTON (GEN HOSP) ON (Heli)

CPK3

REF	N43 15 43 W79 51 17 Adj 10°W UTC-5(4) Elev 403' VTA A5000	
OPR	Hamilton Gen Hosp 905-521-2100 Cert PPR	
PF	A-1 B-2,3,4,7,8 C-5,6	
FLT PLN	FIC London 866-WXBRIEF (Toll free within Canada) or 866-541-4104 (Toll free within Canada & USA)	
HELI DATA	FATO 86' dia non-supporting TLOF 57' dia octagonal ALUMINUM Safety Area 115' dia 16,000 lbs Elevated/rooftop heli Max heli overall length 57.4' RCR Opr	
LIGHTING	RY(LO) green RF(FL)	
COMM	TWR Hamilton 125.0 A/G Ambulance dispatch 129.275	
PRO	Arr/dep 201° to 351° fr heli (H1).	
CAUTION	Bldg 448 AGL with lgtd WI aprx 73.5' E fr heli. Lgtd stack aprx 120' NNE fr heli. Lgtd rooftop eqpt 140' SE fr heli. Lgtd stack 437 ASL (160 AGL) aprx 241' NE fr heli.	

HAMILTON VFR TERMINAL PROCEDURES CHART



NAME	IDENT	LAT/LONG
SKYWAY BRIDGE	VCBBR	N43° 18' 00" W079° 47' 45"
WATERDOWN	VCWTD	N43° 19' 45" W079° 53' 15"