
FLIGHT PLAN & SITE SURVEY

B 50-5794 MINIATURE AIRCRAFT SOCIETY OF TRURO-
MAST Ecole Acadienne du Truro

July 10, 2026



IMPORTANT NOTICE

Please ensure you have received all required authorizations prior to flight. This Site Survey was created using RPAS Wilco. The user accepts all responsibility for the accuracy of the information.

Terms & Conditions: rpaswilco.com/#tnc

Mission Information

B 50-5794 MINIATURE AIRCRAFT SOCIETY OF TRURO- MAST ECOLE ACADIENNE DU TRURO

FLIGHT DETAILS

Reference No:	MAAC-50-5794
Project Name:	MINIATURE AIRCRAFT SOCIETY OF TRURO
Pilot Name:	MAAC
Pilot Certificate:	
Mission Type:	VLOS
Flight Start:	July 10, 2026 01:50 PM
Flight End:	July 10, 2026 02:50 PM

LOCATION DETAILS

Flight Address:	MAST Ecole Acadienne du Truro
Latitude:	45° 21' 39.60" N (45.361)
Longitude:	63° 15' 43.20" W (-63.262)
Field Elevation:	144 ft MSL
Altitude / Radius:	400 ft / 926 m (0.5 nm)
Classification:	UNCONTROLLED
FIR / Contact:	CZQM / 506-867-7173

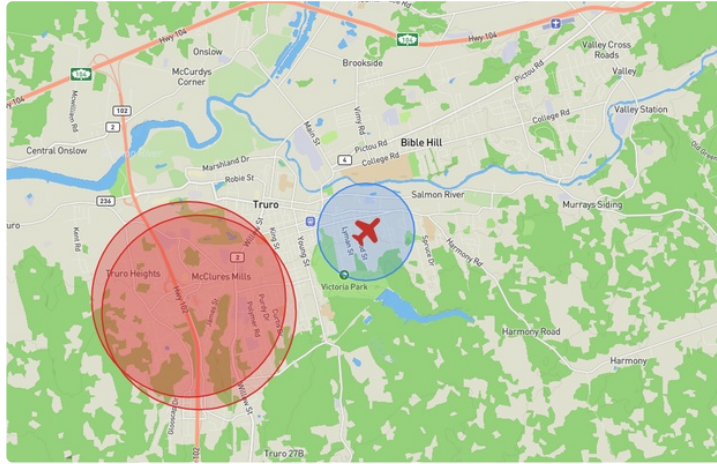
REPORT CONTENTS

Site Survey • Obstacles (if available) • Nearby Aerodromes • Canadian Aviation Regulations • GFA • Aerodrome Supplements • METAR & TAF • NOTAMs • CFS





Flight Map & MODEL Details

MISSION LOCATION SURVEY

FLIGHT AREA MAP



MISSION LOCATION DETAILS

ROLE	LATITUDE	LONGITUDE
 MODEL	45° 21' 39.60" N 45.361	63° 15' 43.20" W -63.262
 Pilot		
 Payload Op.		
 Observer		

Airspace Classification

MISSION LOCATION SURVEY

AIRSPACE MAP



OVERLYING AIRSPACES

Class	Name	Floor	Ceiling
E	T827 Fixed RNAV Route	2200AGL	18000MSL
D	Halifax, NS c) [TCA]	2900MSL	12500MSL

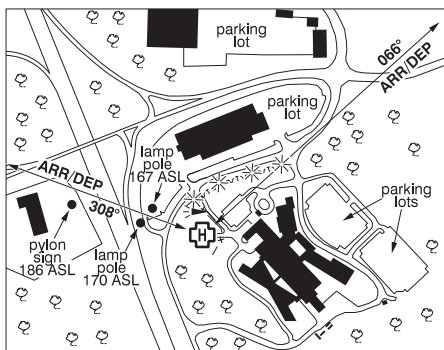
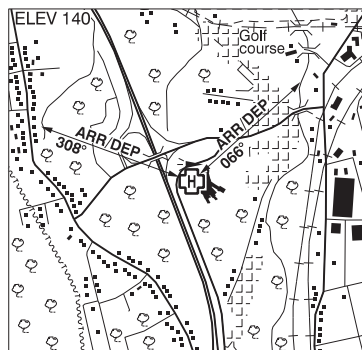
Planned flight altitude is below the lowest documented airspace layer

NEAREST AERODROMES & DISTANCE FROM OPERATION

TRURO (COLCHESTER HEALTH CENTRE) (CEH9 - HELIPORT - Cert)	Lat: 45.349	Long: -63.305	3.618KM	1.954NM	W
Operator: COLCHESTER EAST HANTS HEALTH CENTRE: PHONE: 902-893-4321, PHONE: 902-893-5554 +4222222, POST: UNKNOWN FIR Contact: 506-867-7173					
DEBERT (CCQ3 - AERODROME - Reg)	Lat: 45.419	Long: -63.461	16.84KM	9.093NM	NW
Operator: DEBERT FLIGHT CENTER: PHONE: 902-662-2228, PHONE: 902-758-5177, PHONE: 902-897-3175, POST: 44 Spitfire Rd Debert B0M1G0 FIR Contact: 506-867-7173					
SHUBENACADIE (CSU4 - HELIPORT - Reg)	Lat: 45.093	Long: -63.395	31.54KM	17.03NM	S
Operator: NS DEPT OF NATURAL RESOURCES AND RENEWABLES: PHONE: 902-758-3438, POST: UNKNOWN FIR Contact: 506-867-7173					

TRURO (COLCHESTER HEALTH CENTRE) NS (Heli)

CEH9



REF	N45 20 59 W63 18 20 1.3WSW 18°W (2013) UTC-4(3) Elev 140' A5003
OPR	Colchester East Hants Health Centre 902-893-4321; O/T 902-893-5554 ext 4222222 Cert PPR
PF	A-1,4 C-2,3,5,6
FLT PLN	
FIC	London 866-WXBRIEF (Toll free within Canada) or 866-541-4104 (Toll free within Canada & USA)
ACC	(IFR only) Moncton 506-867-7177 or 866-480-8200
HELI DATA	FATO/TLOF 79' dia ASPH Safety Area 105' Max heli overall length 52.49'
RCR	Opr
LIGHTING	RW(LO) green
COMM	
ATF	tfc 123.0 5NM 2900 ASL
PRO	Arr/dep 066° fr heli, Slope 12% (H2). Arr/dep 308° fr heli (H1).
CAUTION	Heli lies within CYR747 PPR Opr. P-Line N to NE of pad ball marked and lit (portion of P-Line btwn the lit power poles under 308° arr/dep path is buried). Power and lamp poles E of pad marked and lit. Civic centre NE of pad marked with obst lights. Roadway (hosp entry drive) E of heli. Sloped hillside NW of pad. Treed area on embankment, to aprx 65' abv pad elev W of hosp aprx 120' S of pad.

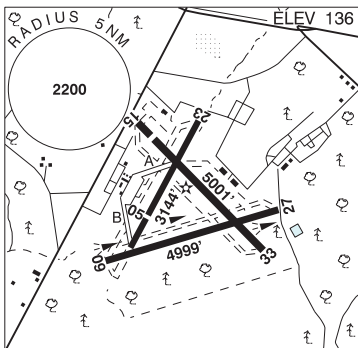
NOVA SCOTIA

AERODROME / FACILITY DIRECTORY

DEBERT NS

CCQ3

REF	N45 25 09 W63 27 41 18°W (2013) UTC-4(3) Elev 136' A5003 LO8 HI6 CAP
OPR	Debert Flight Center 902-662-2228 or 902-897-3175, 902-758-5177 Reg
PF	A-7 B-1 C-2 D-3,4,5,6
CUST	AEO/25 888-226-7277 12-02Z†; AOE/CAN
FLT PLN	<p>FIC London 866-WXBRIEF (Toll free within Canada) or 866-541-4104 (Toll free within Canada & USA)</p> <p>ACC (IFR only) Moncton 506-867-7177 or 866-480-8200.</p> <p>WX AUTO H24 (see COMM) WxCam</p>



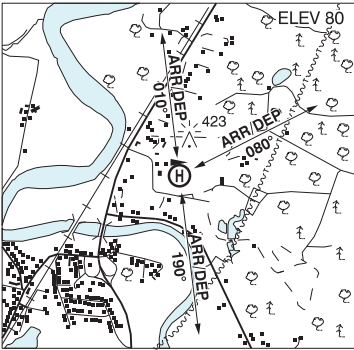
SERVICES	
FUEL	100LL, JA
OIL	15W50
RWY DATA	<p>Rwy 05(048°)/23(228°) 3144x150 asphalt Rwy 23 down 0.53%</p> <p>Rwy 09(091°)/27(271°) 4999x150 asphalt AGN IIIA</p> <p>Rwy 15(153°)/33(333°) 5001x150 asphalt Thld 15 displ 497'.</p>
RCR	Opr Ltd win maint
LIGHTING	09-(TE LO), 27-(TE LO) ARCAL-123.0 type J PN
COMM	
ATF	UNICOM ltd hrs O/T tfc 123.0 5NM 3100 ASL
ARR	Halifax Tml 119.2
DEP	Halifax Tml 119.2
AUTO	122.275
PRO	Refer to Halifax/Stanfield VTPC for info on local tng areas and Class D airspace. Rgt hand circuits auth for gliders & tow planes (CAR 602.96). DO NOT OVERFLY AERODROME dur glider ops. Glider ops 123.0 dur glider activity.
CAUTION	<p>GLIDER: Glider ops are sporadic throughout the year. Vehicle & acft launching.</p> <p>TWYS: All twys ruf.</p> <p>RWY: Rwy 05/23 surfaces deteriorating. 2000' abandoned portion of Rwy 05/23 suitable for taxi only.</p> <p>Lgtd twr 407 ASL (295 AGL) aprx 1.8NM SW.</p>

NOVA SCOTIA

AERODROME / FACILITY DIRECTORY

SHUBENACADIE NS (Heli)

CSU4

REF	N45 05 36 W63 23 43 Adj ENE 17°W (2021) UTC-4(3) Elev 80' A5003	
OPR	NS Dept of Natural Resources and Renewables 902-758-3438 Reg PPR PN for RCMP, DND, Cdn Coast Guard, MEDEVAC.	
PF	B-1 C-2,4,7,8 D-3,5,6	
FLT PLN	FIC London 866-WXBRIEF (Toll free within Canada) or 866-541-4104 (Toll free within Canada & USA)	
HELI DATA	FATO 100' dia GRASS Parking Pad 1: 42'dia CONC Parking Pad 2: 42'dia CONC Parking Pad 3: 42'dia CONC	
RCR	Opr	
LIGHTING	RF(FH)	
COMM	ATF tfc 123.2 5NM 3100 ASL	
PRO	Arr/dep 010° & 080° & 190° fr heli.	
CAUTION	Lgtd twr 423 ASL (315 AGL) 0.13NM NE	