
FLIGHT PLAN & SITE SURVEY

N 633-4959 CLUB D'AVION TELEGUIDE D'ALMA- TERRAIN -
2635 ROUTE DU LAC O ALMA

July 10, 2026



IMPORTANT NOTICE

Please ensure you have received all required authorizations prior to flight. This Site Survey was created using RPAS Wilco. The user accepts all responsibility for the accuracy of the information.

Terms & Conditions: rpswilco.com/#tnc

Mission Information

N 633-4959 CLUB D'AVION TELEGUIDE D'ALMA- TERRAIN - 2635 ROUTE DU LAC O ALMA

FLIGHT DETAILS

Reference No:	MAAC-633-4959
Project Name:	CLUB D'AVION TELEGUIDE D'ALMA
Pilot Name:	MAAC
Pilot Certificate:	
Mission Type:	VLOS
Flight Start:	July 10, 2026 12:51 PM
Flight End:	July 10, 2026 01:51 PM

LOCATION DETAILS

Flight Address:	TERRAIN - 2635 ROUTE DU LAC O ALMA
Latitude:	48° 31' 53.62" N (48.532)
Longitude:	71° 42' 20.95" W (-71.706)
Field Elevation:	371 ft MSL
Altitude / Radius:	400 ft / 926 m (0.5 nm)
Classification:	RESTRICTED
FIR / Contact:	CZUL / 514-633-3365

NOTES

Your flight is in restricted airspace.
Please obtain approval from controlling agency found in the DAH.

REPORT CONTENTS

Site Survey • Obstacles (if available) • Nearby Aerodromes • Canadian Aviation Regulations • GFA • Aerodrome Supplements • METAR & TAF • NOTAMS • CFS

Airspace Classification

MISSION LOCATION SURVEY

AIRSPACE MAP



OVERLYING AIRSPACES

Class	Name	Floor	Ceiling
F	CYR651 ALMA, QC	SFC	6000MSL
User Agency: Alma UAS Centre of Excellence - (418) 669-5129 / info@cedalma.com Controlling Agency: Bagotville Military Terminal Control (418) 677-4000 Ext 661-7407, (CSN) 661-7407			
E	Bagotville, QC e) [TCA]	700AGL	18000MSL

NEAREST AERODROMES & DISTANCE FROM OPERATION

ALMA (CYTF - AERODROME - Cert)	Lat: 48.508	Long: -71.641	5.421KM	2.927NM	SE
Operator: DEVELOPPEMENT ECONOMIQUE ALMA LAC-SAINT-JEAN: PHONE: 418-669-5104, POST: UNKNOWN, URL: www.almalacsaintjean.ca/aeroport-alma/ FIR Contact: 514-633-3365					
ALMA (RIVIERE LA GRANDE DECHARGE) (CGD2 - WATERDROME - Reg)	Lat: 48.563	Long: -71.616	7.507KM	4.053NM	NE
Operator: AIR MAINTENANCE/MARTIN BOUCHARD: PHONE: 418-668-8745, PHONE: 418-668-9522, POST: UNKNOWN FIR Contact: 514-633-3365					
ST-CHARLES-DE-BOURGET (CSA5 - WATERDROME - Reg)	Lat: 48.509	Long: -71.464	17.987KM	9.712NM	E
Operator: MICHEL GUAY: PHONE: 418-487-4071, POST: UNKNOWN FIR Contact: 514-633-3365					

QUEBEC

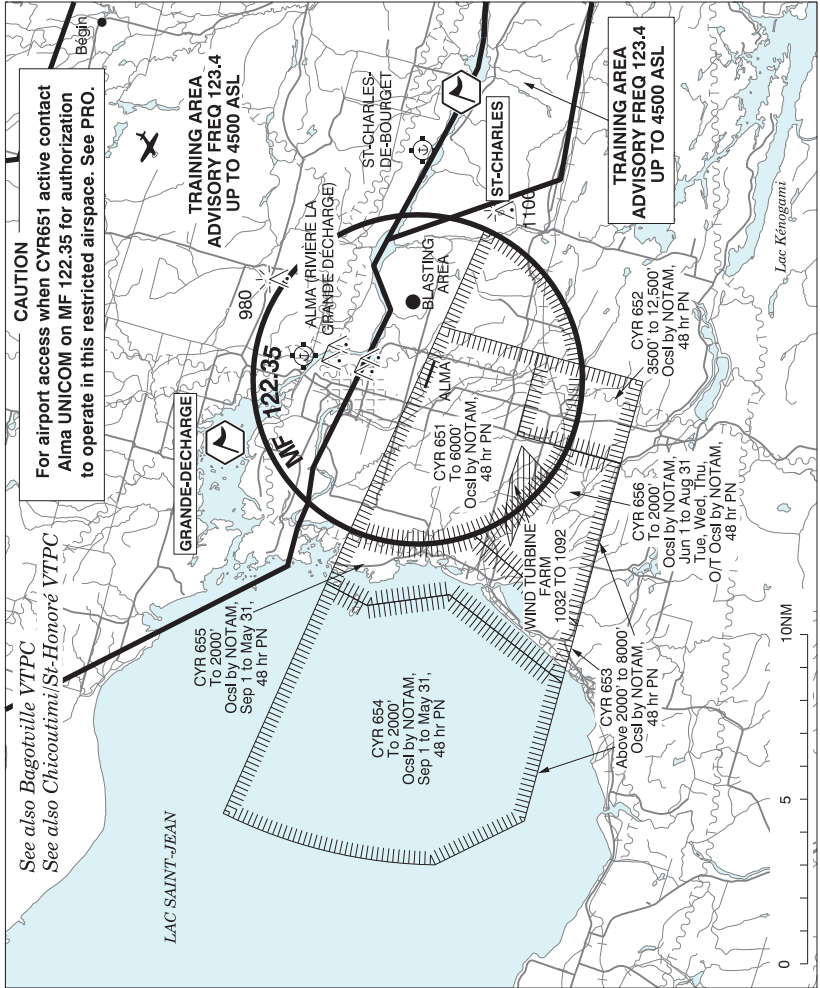
AERODROME / FACILITY DIRECTORY

ALMA QC

CYTF

REF	N48 30 31 W71 38 29 2.2S 17°W (2014) UTC-5(4) Elev 448' A5010 LO6 LO7 HI5 HI6 CAP	
OPR	Développement Économique Alma Lac Saint-Jean 418-669-5104 www.almalacsaintjean.ca/aeroport-alma 13-21Z‡ Mon-Fri Cert Ldg fees, tml fees	
PF	A-1,2,7 C-3,4,5,6	
FLT PLN	(bil)	
FIG	Québec 866-GOMÉTÉO or 866-WXBRIEF (Toll free within Canada) or 866-541-4105 (Toll free within Canada & USA)	
ACC	Montréal 800-633-1353	
WX	AUTO 418-669-5406 (see COMM)	
SERVICES	1230-2130Z‡ Mon-Fri exc hols, O/T 1 hr PN 418-480-8686. Call out chg may be levied for one or more svcs.	
FUEL	100LL (fuel management tml avbl, ctc opr to receive code), JA-1 (FSII avbl), SP	
S	1(Ltd),2,3,4,5,6	
JASU	Electric start 10/15	
RWY DATA	Rwy 13(131°)/31(311°) 5000x100 ASPH Rwy 31 down 0.37%	
RWY CERT	Rwy 13/31 AGN IIIA	
TWY CERT	Twy A AGN II	
RCR	Opr CRFI Win maint O/R 1530-2130Z‡ Mon-Fri exc hols, O/T 3 hrs PN 418-480-8686, call out chg may be levied. PCN	
LIGHTING	13-AO(TE ME), 31-AO(TE ME) ARCAL-122.35 type K	
COMM	(bil)	
CLNC DEL	Prior dep pilots must ctc Bagotville Tml for IFR clnc at 888-813-8508.	
MF/ATF	UNICOM 1330-2030Z‡ Mon-Fri, exc hols (CAR 602.98) O/T tfc 122.35 5NM 3500 ASL	
TML	Bagotville 127.2 227.6	
VFR ADV	Bagotville Tml 121.2	
AUTO	123.175	
NAV		
DME	ITF 110.7 Ch 44 N48 30 14 W71 37 47 (458')	
LOC	ITF 110.7 (Rwy 13)	
PRO	Several areas of Class F of restricted airspace (CYRs) have been established in the Alma area for flight testing of Remotely Piloted Aircraft (RPA). These CYRs are activated occasionally by NOTAM with 48 hours prior notice. No person shall operate an aircraft within an active CYR unless the flight has been authorized by the User Agency as stated in the Designated Airspace Handbook (DAH). When CYR651 is active and access to the Alma airport is required, to avoid delays pilots should make prior arrangements with the User Agency for authorization to operate within the CYR. Pilots can contact Alma UNICOM MF 122.35 for authorization but unless the flight is essential such as MEDEVAC, police, emergency, etc., access may be delayed. Once authorized, pilots must enter and exit CYR651 from the northeast and operations are restricted to circuit procedures for arrivals and departures from the airport only. See Alma VTPC for a depiction of the CYRs.	
CAUTION	Parachute jumps over apt to 12,500 ASL, (DT 12-24Z) May-Sep. Possible win maint eqpt on rwy outside ops hrs. Migratory bird activity Apr-Nov.	

ALMA VFR TERMINAL PROCEDURES CHART



NAME	IDENT	LAT/LONG
GRANDE-DECHARGE	VCGRD	N48° 36' 48" W071° 41' 00"
ST-CHARLES	VCSTC	N48° 29' 30" W071° 24' 30"

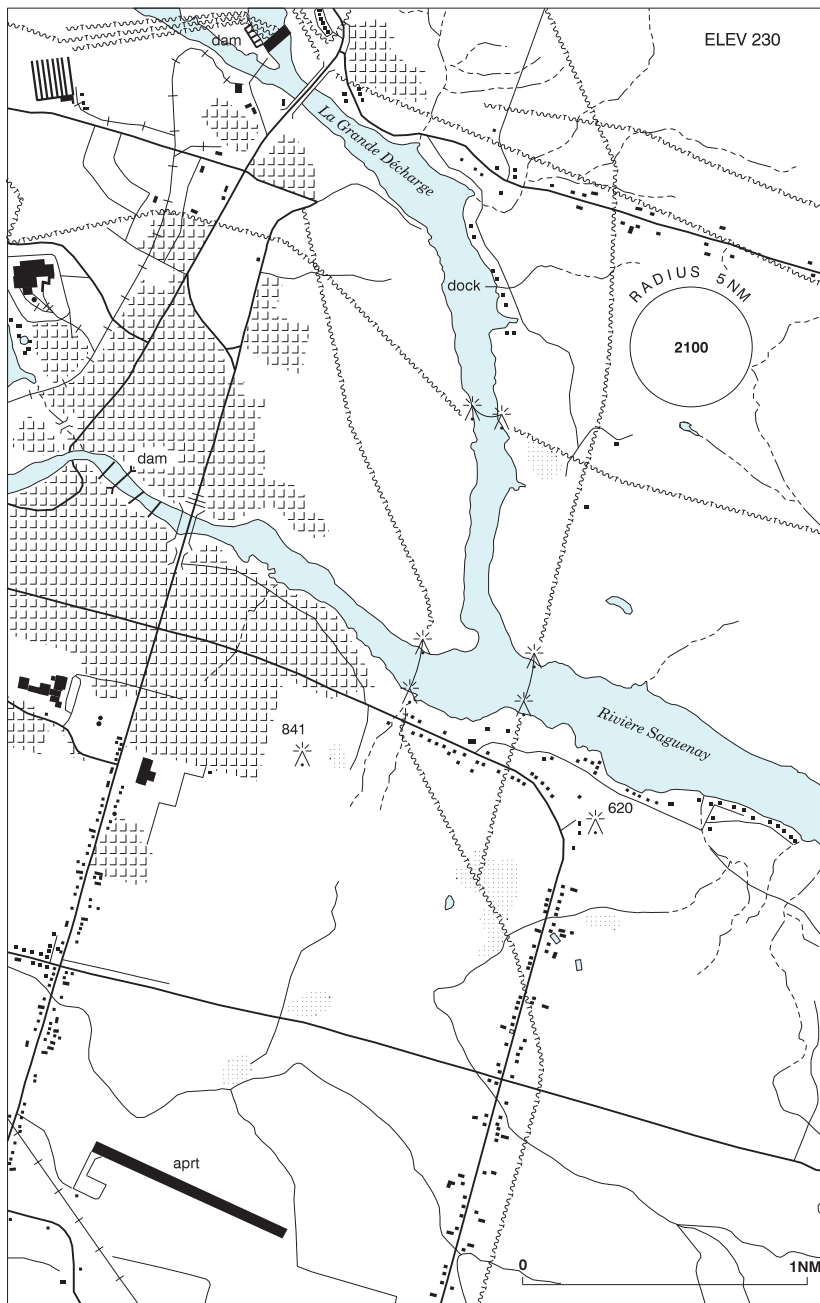
CANADA WATER AERODROME SUPPLEMENT

Effective 0901Z 19 March 2026 to 0901Z 18 February 2027

AERODROME/FACILITY DIRECTORY B3

ALMA (RIVIÈRE LA GRANDE DÉCHARGE) QC

CGD2



REF

N48 33 48 W71 36 57 1NE 17°W (2014) UTC-5(4) Elev 230' A5010

CANADA WATER AERODROME SUPPLEMENT

Effective 0901Z 19 March 2026 to 0901Z 18 February 2027

B4 AERODROME/FACILITY DIRECTORY

ALMA (RIVIÈRE LA GRANDE DÉCHARGE) QC (Cont'd)

CGD2

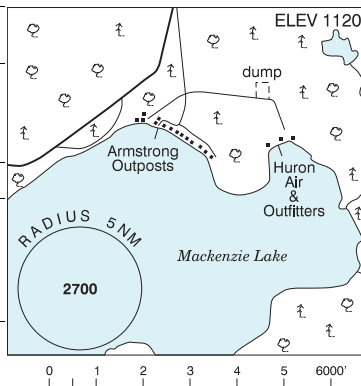
OPR	Air Maintenance/Martin Bouchard 418-668-9522/8745 Reg
PF	B-1 C-2,3,4,5
FLT PLN	(bil)
FIC	Québec 866-GOMÉTÉO or 866-WXBRIEF (Toll free within Canada) or 866-541-4105 (Toll free within Canada & USA)
SERVICES	
OIL	All
S	2,3
A/D DATA	Open water mid-Apr to mid-Nov. Bottom sand and mud.
COMM	
MF/ATF	UNICOM at land A/D 3.5NM SSW 1330-2030Z± Mon-Fri, exc hols (CAR 602.98) O/T tfc 122.35 5NM centred on land A/D 3.5NM SSW 3500 ASL
VFR ADV	(bil) Bagotville Tml 121.2
CAUTION	Ocsl small fishing boats.

ALPORT BAY ON — See LAKE MUSKOKA / ALPORT BAY

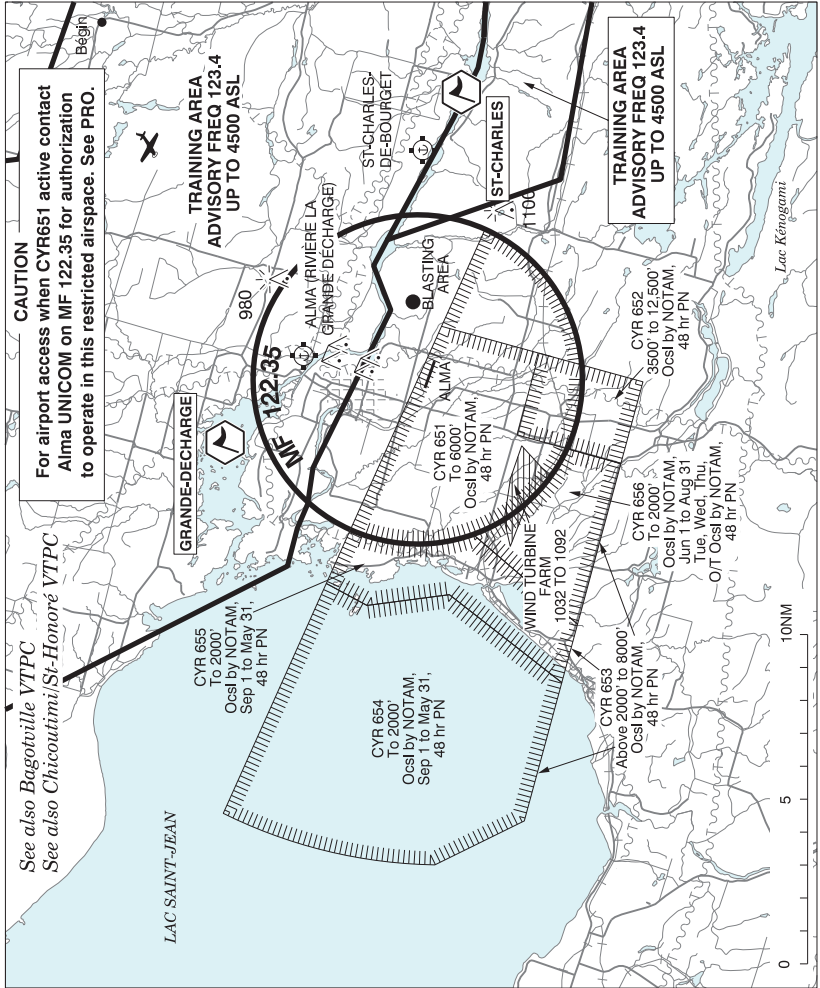
ARMSTRONG ON

CJF6

REF	N50 15 W89 03 2S 4°W UTC-5(4) Elev 1120' A5008
OPR	Armstrong Outposts 807-583-2180 (sum), 807-767-0519 (win) Reg Huron Air & Outfitters 807-583-2051 Reg
PF	B-1 D-2,4,5
FLT PLN	Pilots to open/close VFR flt plan with London rdo, FISE or by phone
FIC	London 866-WXBRIEF (Toll free within Canada) or 866-541-4104 (Toll free within Canada & USA)
SERVICES	
FUEL	100LL
OIL	100, 15/50
S	5
A/D DATA	Open water mid May-Oct. Ski planes in win.
COMM	
ATF	tfc 122.8 5NM 4100 ASL



ALMA VFR TERMINAL PROCEDURES CHART



NAME	IDENT	LAT/LONG
GRANDE-DECHARGE	VCGRD	N48° 36' 48" W071° 41' 00"
ST-CHARLES	VCSTC	N48° 29' 30" W071° 24' 30"

CANADA WATER AERODROME SUPPLEMENT

Effective 0901Z 19 March 2026 to 0901Z 18 February 2027

B226 AERODROME/FACILITY DIRECTORY

SAGUENAY (HARVEY) QC (Cont'd)

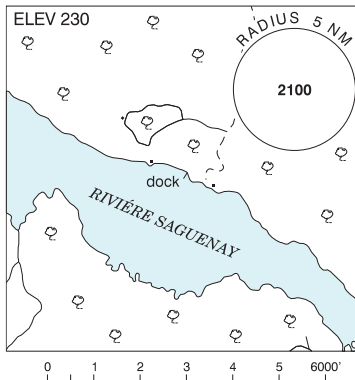
CSA8

PRO	<p>Refer to Bagotville VTPC</p> <p>Circuits: Right hand circuits when ldg and tkof to E (CAR 602.96)</p> <p>Depart: Obtain appr fr Bagotville TWR (418-677-4000 Ext 7507) at least 5 min before tkof. Broadcast intentions on 126.2 - Bagotville TWR before tkof.</p> <p>Remain at 1000 ASL or BLW until comm with Bagotville TWR is established; ctc TWR even if you leave the CZ at 1000 ASL or below.</p> <p>Avoid CYRC CZ north of the Saguenay River.</p>
CAUTION	<p>Marked P-lines aprx 250 ASL (110 AGL) 1.5NM E</p> <p>Frequent low alt heli activity E of Dubuc bridge</p>

SAGUENAY / ST-CHARLES-DE-BOURGET QC

CSA5

REF	<p>N48 30 34 W71 27 50 5.8WNW</p> <p>St-Charles-de-Bourget 17°W (2014)</p> <p>UTC-5(4) Elev 230' A5010</p>
OPR	<p>Michel Guay 418-487-4071 Reg PN</p>
PF	<p>D-1,2,3,4,5,6</p>
FLT PLN	<p>(bil)</p>
FIC	<p>Québec 866-GOMÉTÉO or</p> <p>866-WXBRIEF (Toll free within Canada)</p> <p>or 866-541-4105 (Toll free within Canada & USA)</p>
SERVICES	<p>S 1,5,7</p>
A/D DATA	<p>Open water May-Nov. Sand and rock bottom. Dock depth 5'.</p>
DOCKS	<p>Ramp</p>
COMM	<p>ATF tfc 123.4 5NM outside Alma MF area 3300 ASL</p> <p>VFR ADV Bagotville Tml 121.2</p>



CAUTION	<p>Hvy tng zone N of river freq 123.4. Refer to Chicoutimi/St-Honoré VTPC.</p>
----------------	--

SAKINAW LAKE SOUTH BC — See GARDEN BAY / SAKINAW LAKE SOUTH

SALMON LAKE ON — See PARRY SOUND / SALMON LAKE