
FLIGHT PLAN & SITE SURVEY

K 114-4045 MOOSE JAW R/C AIRCRAFT CLUB- ASH ST. &
16TH AVE.

July 10, 2026



IMPORTANT NOTICE

Please ensure you have received all required authorizations prior to flight. This Site Survey was created using RPAS Wilco. The user accepts all responsibility for the accuracy of the information.

Terms & Conditions: rpaswilco.com/#tnc

Mission Information

K 114-4045 MOOSE JAW R/C AIRCRAFT CLUB- ASH ST. & 16TH AVE.

FLIGHT DETAILS

Reference No:	MAAC-114-4045
Project Name:	MOOSE JAW R/C AIRCRAFT CLUB
Pilot Name:	MAAC
Pilot Certificate:	
Mission Type:	VLOS
Flight Start:	July 10, 2026 10:51 AM
Flight End:	July 10, 2026 11:51 AM

LOCATION DETAILS

Flight Address:	ASH ST. & 16TH AVE.
Latitude:	50° 23' 21.20" N (50.389)
Longitude:	105° 35' 6.70" W (-105.585)
Field Elevation:	1772 ft MSL
Altitude / Radius:	400 ft / 926 m (0.5 nm)
Classification:	CONTROLLED
FIR / Contact:	CZWG / 204-983-8338

NOTES

Your flight is in controlled airspace.
If your RPAS is > 250g, please obtain RPAS Flight Authorization using the NavDrone app or by contacting NavCanada. (CARs 901.71)

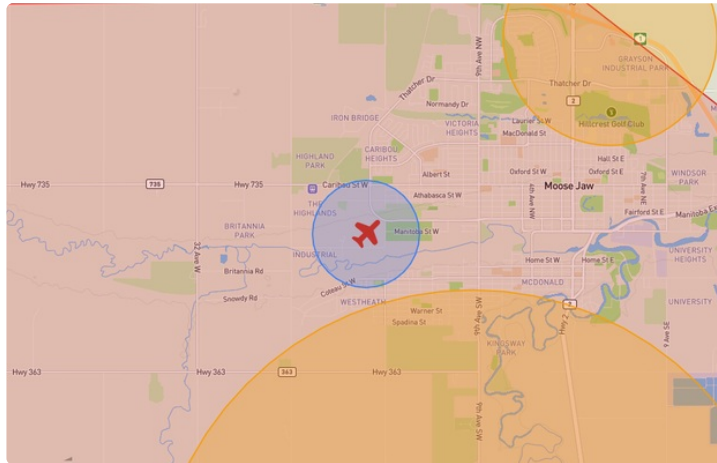
REPORT CONTENTS

Site Survey • Obstacles (if available) • Nearby Aerodromes • Canadian Aviation Regulations • GFA • Aerodrome Supplements • METAR & TAF • NOTAMS • CFS





Flight Map & MODEL Details

MISSION LOCATION SURVEY

FLIGHT AREA MAP



MISSION LOCATION DETAILS

ROLE	LATITUDE	LONGITUDE
 MODEL	50° 23' 21.20" N 50.389	105° 35' 6.70" W -105.585
 Pilot		
 Payload Op.		
 Observer		

Airspace Classification

MISSION LOCATION SURVEY

AIRSPACE MAP



OVERLYING AIRSPACES

Class	Name	Floor	Ceiling
D	Moose Jaw, SK [CZ]	SFC	8000MSL
E	Moose Jaw, SK d) [TCA]	700AGL	18000MSL

NEAREST AERODROMES & DISTANCE FROM OPERATION

AIR VICE MARSHAL C.M. MCEWEN (CYM) - AERODROME - DND)	Lat: 50.33	Long: -105.559	6.809KM	3.677NM	S
Operator: DEPARTMENT OF NATIONAL DEFENCE: PHONE: 306-694-2222 +5263, PHONE: 319-826-5263, POST: UNKNOWN FIR Contact: 204-983-8338					
MOOSE JAW (DR. F. H. WIGMORE REGIONAL HOSP) (CWH6 - HELIPORT - Reg)	Lat: 50.42	Long: -105.526	5.419KM	2.926NM	NE
Operator: DR. F.H. WIGMORE REGIONAL HOSP: FAX: 306-694-0282 , PHONE: 306-694-0275 , POST: UNKNOWN FIR Contact: 204-983-8338					
MOOSE JAW MUNI (CJS4 - AERODROME - Reg)	Lat: 50.434	Long: -105.386	14.964KM	8.08NM	E
Operator: PROVINCIAL AIRWAYS: PHONE: 306-630-8870, PHONE: 306-692-7335, POST: UNKNOWN FIR Contact: 204-983-8338					

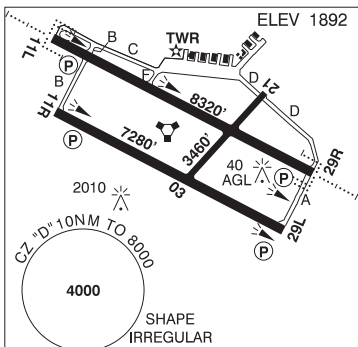
SASKATCHEWAN

AERODROME / FACILITY DIRECTORY

MOOSE JAW / AIR VICE MARSHAL C.M. McEWEN SK

CYMJ

REF	N50 19 49 W105 33 33 4S 9°E (2022) UTC-6 Elev 1892' A5006 LO2 HI3 HI4 CAP
OPR	DND Aeronautical Information Services 306-694-2222 Ext 5263 CSN 319-826-5263 All non-NFTC / CYMJ based acft PPR 48 hrs rqrd
PF	B-1 D-2,3,4,5,6 no pax fac avbl. Nova msg rqrd stating ETA, stop-over duration & no of pax
CUST	15 Wing acft only call 306-780-6223/6218



FLT PLN	FIC Edmonton 866-WXBRIEF (Toll free within Canada) or 866-541-4102 (Toll free within Canada & USA)
	MIL CSN 319-826-5263
	WX Met brief for mil only.
	CSN 826-5260 ltd hrs. O/T JMC 1-800-WXMETEO (996-3836) or CSN 432-2613. (See COMM). METAR dur flt ops. TAF dur flt ops, issue times depending on mil requirements.

SERVICES	All tran arr & dep 48 hrs PPR thru 15 Wg AIS 306-694-2222 Ext 5263 CSN 319-826-5263. Mil tran svc ltd 14-0030Z Mon-Fri (fr 1st Mon Nov to 3rd Mon Feb 1430-01Z Mon-Fri), 48 hrs PN or no svc avbl. All visiting acft rpt to 15 Wg AIS at 4 hg or ctc 694-2222 Ext 5263, upon arr & prior to dep.
FUEL	F-34, SP, Avbl 14-0030Z Mon-Fri (fr 1st Mon Nov to 3rd Mon Feb 1430-01Z Mon-Fri) O/T 48 hrs PN.
OIL	128, 133, 148, SOAP
ARFF	CAT 3
SUP FL	LHOX
JASU	CE13, 15, 16, CEA1

RWY DATA	Rwy 11L(109°)/29R(289°) 8320x150 ASPH Rwy 11R(109°)/29L(289°) 7280x150 ASPH Rwy 03(034°)/21(214°) 3460x100 ASPH
TWY	Twy B: Btwn Rwy 11L & Rwy 11R rstd to acft with wingspan of 75' or less.
RCR	Opr CRFI 14-0030Z Mon-Fri (fr 1st Mon Nov to 3rd Mon Feb 1430-01Z Mon-Fri) clsd Sat & Sun. Hrs may vary without ntc. Rwy 11R/29L PCN 62 F/D/X/T. Rwy 11L/29R PCN 139 F/D/X/T. Rwy 03/21 light acft only. Depression aprx 700' to 900' from thld 03, 15' rgt of centreline Rwy 03, aprx 4 inches wide and 1.5 inches deep. Twy F max wt 35000lbs. Ramp W of TWR PCN 62 R/A/X/T. Ramp E of TWR PCN 34 R/A/X/T.

LIGHTING	03-(T ME), 21-(T ME), 11L-AF SF(TE HI) P2 GPI 979' TCH 51', 29R-AF SF(TE HI) P2 GPI 1033' TCH 54', 11R-(TE HI) P2 GPI 1000' TCH 52', 29L-(TE HI) P2 GPI 1000' TCH 52'
-----------------	---

COMM	Avbl 14-0030Z Mon-Fri (fr 1st Mon Nov to 3rd Mon Feb 1430-01Z Mon-Fri), A/D frequently clsd Sat & Sun. Opr dates & hrs may vary without notice.
ATIS	131.3 257.8
CLNC DEL	135.3 234.4
GND	121.8 275.8
TWR	126.2 295.6 310.8 322.6 (E)
TML	119.0 227.6 342.9 (E)
ARR	119.0 129.1 134.1x 227.6 289.4x 308.3x 318.8x 374.1x 378.5x 381.3x (E)
DEP	119.0 227.6 342.9 (E)
PMSV	344.6 ltd hrs.

SASKATCHEWAN

AERODROME / FACILITY DIRECTORY

MOOSE JAW / AIR VICE MARSHAL C.M. McEWEN SK (Cont'd) CYMJ

NAV	<p>VORTAC YMJ 113.4 Ch 81 N50 19 52 W105 33 48 (1898') VOR maint 2nd Mon of the month 13-14Z. TACAN maint 3rd Thu of the month 13-15Z.</p> <p>DME IBP or IMJ 109.3 Ch 30 N50 19 51 W105 33 48 Maint 2nd Mon of the month 12-14Z</p> <p>ILS IMJ 109.3 (Rwy 29R) RVR or IBP 109.3 (Rwy 11L) Maint 2nd Mon of the month 12-14Z</p> <p>PAR 119.0 227.6 (E) 14-0030Z Mon-Fri (fr 1st Mon Nov to 3rd Mon Feb 1430-01Z Mon-Fri) clsd Sat & Sun. Hrs may vary without notice. PAR maint 1st Tue of the month 13-16Z. PSR/SSR maint 1st Fri of the month 12-14Z</p>
PRO	<p>A/D clsd to unauthorized acft outside of twr opr hrs 14-0030Z Mon-Fri (fr Nov 1 to Feb 15 1430-01Z Mon-Fri). Acft unable to establish two-way comm with CYMJ ATC are proh fr taxi, tkof or ldg at the A/D exc in an emerg. All RCAF acft requesting enroute apch during twr ops hrs do not require PPR. Apch req appr at the discretion of CYMJ ATS subj to tfc density. All tran acft must ctc CYMJ gnd on 121.8/275.8 prior to engine start. On climb out in VFR wx, all acft to not exceed 2500 ASL until beyond dep end of rwy. Acft on IFR misd apchs in VMC should fly from the misd apch point to the rwy thld and track rwy centerline by best means until interception of the misd apch radial, where applicable. Rgt hand circuits Rwy 11R and 29R (CAR 602.96). Tfc Ptn - Conv 3000 ASL, Jet/High-perf turboprop 3500 MSL. CZ may be active outside published hrs. Glider activity wknds & hols within 3 NM of AD max alt 10,000 ASL Paradrop activity to 12,000 ASL within 1.5NM of Moose Jaw Muni.</p> <p>Civilian training areas: See MOOSE JAW / AIR VICE MARSHAL C.M. McEWEN VFR TERMINAL PROCEDURES CHART.</p>
HELI	<p>Dep & arr Helo 1 & 2 see VTPC.</p> <p>Arriving acft must ctc twr 295.6 or 126.2 prior to entering CZ & req Helo 1 or Helo 2 arr. Intercept inbound track within 10NM. Heli parking positions as directed by ATC (normally west side of control tower).</p>
NOISE	<p>All mil acft shall avoid flying over the city of Moose Jaw below 5000 ft ASL.</p>
CAUTION	<p>Rwy 21 - PSR twr 2010 ASL loc 2034' along & 767' rgt of dep end centreline. RPAS area (Hamilton Flats), 3.5NM NW of aerodrome YMJ R333 3.5 DME posn (N50 23 18 W105 35 12) max alt 400 AGL.</p>

SASKATCHEWAN

AERODROME / FACILITY DIRECTORY

MOOSE JAW (DR. F. H. WIGMORE REGIONAL HOSP) SK (Heli)**CWH6**

REF	N50 25 12 W105 31 32 Adj N 10°E (2016) UTC-6 Elev 1879' A5006	
OPR	Dr. F.H. Wigmore Regional Hosp 306-694-0275 Cert PPR	
PF	A-1,2,4 C-3,5,6,7,8	
FLT PLN	FIC Edmonton 866-WXBRIEF (Toll free within Canada) or 866-541-4102 (Toll free within Canada & USA)	
HELI DATA	FATO/TLOF 86' dia CONC Safety Area 115' dia Max heli overall length 57.4'	
RCR	Opr	
LIGHTING	RW (LO) yellow	
COMM	MF Moose Jaw (CYMJ) TWR 126.2 ctc within 10NM 4900 ASL	
PRO	Arr/dep curved 064° to 099° fr heli, slope 16% (H2), day/night use. Arr/dep curved 264° to 279° fr heli, slope 16% (H2), day/night use.	
CAUTION	Lgt poles W, N, E of heli, marked with obst lgts. Hosp S of heli marked with lgts.	

SASKATCHEWAN

AERODROME / FACILITY DIRECTORY

MOOSE JAW MUNI SK

CJS4

REF	N50 26 01 W105 23 10 7ENE 10°E (2013) UTC-6 Elev 1904' A5006 LO2 CAP	
OPR	Provincial Airways 306-692-7335 (After hrs 306-630-8870) Reg	
PF	B-1 D-2,3,4,5,6	
FLT PLN	FIC Edmonton 866-WXBRIEF (Toll free within Canada) or 866-541-4102 (Toll free within Canada & USA)	
SERVICES	FUEL 100LL, JA-1 (FSII Avbl) Self-serve OIL All S 1, 2, 3, 4, 5, 6	
RWY DATA	Rwy 13(125°)/31(305°) 4000x75 ASPH AGN II	
RCR	Opr	
LIGHTING	13-(TE LO), 31-(TE LO) ARCAL-122.8 type J	
COMM	ATF UNICOM ltd hrs O/T ftc 122.8 5NM 4900 ASL excluding the CYMJ Class "D" CZ. Apt in close proximity to CFB Moose Jaw Class "D" CZ, for flt info ctc TWR 126.2	
PRO	Rgt hand circuits Rwy 31 (CAR 602.96). Civilian training areas: See MOOSE JAW / AIR VICE MARSHAL C.M. McEWEN VFR TERMINAL PROCEDURES CHART	
CAUTION	Ocsl parajump activity within 2NM of A/D daylight hours Apr 1-Nov 15, activated by NOTAM, max alt 12,500 ASL. P-line 2046 ASL 0.4NM SE Thld 31. Grain bins 1981 ASL 0.4NM NW Thld 13.	