

---

# FLIGHT PLAN & SITE SURVEY

---

B 30-5731 SAINT JOHN MODEL FLYING CLUB- Lakefield  
Elementary School

July 10, 2026



**IMPORTANT NOTICE**

Please ensure you have received all required authorizations prior to flight. This Site Survey was created using RPAS Wilco. The user accepts all responsibility for the accuracy of the information.

Terms & Conditions: [rpswilco.com/#tnc](https://rpswilco.com/#tnc)

# Mission Information

B 30-5731 SAINT JOHN MODEL FLYING CLUB- LAKEFIELD ELEMENTARY SCHOOL

## FLIGHT DETAILS

Reference No:	<b>MAAC-30-5731</b>
Project Name:	<b>SAINT JOHN MODEL FLYING CLUB</b>
Pilot Name:	<b>MAAC</b>
Pilot Certificate:	
Mission Type:	<b>VLOS</b>
Flight Start:	<b>July 10, 2026 01:52 PM</b>
Flight End:	<b>July 10, 2026 02:52 PM</b>

## LOCATION DETAILS

Flight Address:	<b>Lakefield Elementary School</b>
Latitude:	<b>45° 25' 5.09" N ( 45.418 )</b>
Longitude:	<b>65° 58' 26.26" W ( -65.974 )</b>
Field Elevation:	<b>203 ft MSL</b>
Altitude / Radius:	<b>400 ft / 926 m ( 0.5 nm )</b>
Classification:	<b>UNCONTROLLED</b>
FIR / Contact:	<b>CZQM / 506-867-7173</b>

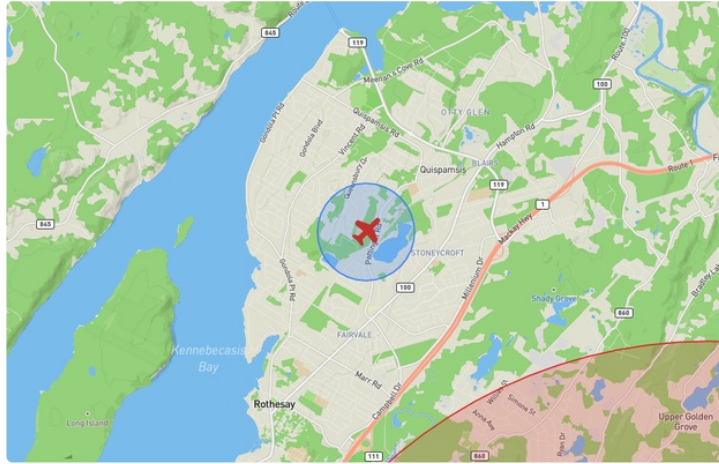
## REPORT CONTENTS

Site Survey • Obstacles (if available) • Nearby Aerodromes • Canadian Aviation Regulations • GFA • Aerodrome Supplements • METAR & TAF • NOTAMs • CFS





# Flight Map & MODEL Details

MISSION LOCATION SURVEY

## FLIGHT AREA MAP



## MISSION LOCATION DETAILS

ROLE	LATITUDE	LONGITUDE
 MODEL	45° 25' 5.09" N 45.418	65° 58' 26.26" W -65.974
 Pilot		
 Payload Op.		
 Observer		

# Airspace Classification

MISSION LOCATION SURVEY

## AIRSPACE MAP



## OVERLYING AIRSPACES

Class	Name	Floor	Ceiling
E	Saint John, NB [TA]	700AGL	18000MSL
E	MARITIME CAE [CAE]	2200AGL	18000MSL

Planned flight altitude is below the lowest documented airspace layer

## NEAREST AERODROMES & DISTANCE FROM OPERATION

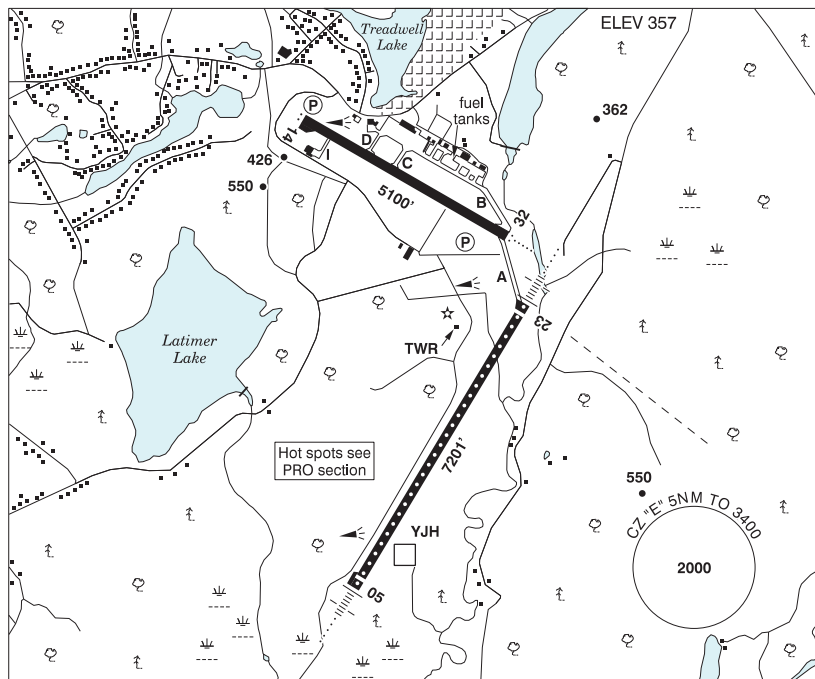
SAINT JOHN (CYS) - AERODROME - Cert)	Lat: 45.316	Long: -65.89	13.126KM	7.087NM	SE
<b>Operator:</b> SAINT JOHN AIRPORT INCORPORATED: PHONE: 506-638-5555, POST: UNKNOWN <b>FIR Contact:</b> 506-867-7173					
SAINT JOHN (SAINT JOHN REGIONAL HOSPITAL) (CSN6 - HELIPORT - Cert)	Lat: 45.302	Long: -66.088	15.666KM	8.459NM	SW
<b>Operator:</b> SAINT JOHN REGIONAL HOSP ATLANTIC HEALTH SCIENCES: PHONE: 506-648-6614, POST: UNKNOWN <b>FIR Contact:</b> 506-867-7173					
JENKINS COVE (CJO3 - WATERDROME - Reg)	Lat: 45.594	Long: -65.957	19.565KM	10.564NM	N
<b>Operator:</b> RICHARD PATTIE: PHONE: 506-485-1122, POST: 42 Hill Rd. Kars, NB <b>FIR Contact:</b> 506-867-7173					

**NEW BRUNSWICK**

**AERODROME / FACILITY DIRECTORY**

**SAINT JOHN NB**

**CYSJ**



<b>REF</b>	N45 18 57 W65 53 24 8ENE 18°W (2014) UTC-4(3) Elev 357' A5003 LO8 HI6 CAP OC
<b>OPR</b>	Saint John Airport Inc 506-638-5555 0930-0359Z± Cert
<b>PF</b>	A-1,2,3,6,7 09-04Z± C-4,5
<b>CUST</b>	AOE/120 (140 with staged off-loading) 888-226-7277 12-04Z±
<b>FLT PLN</b>	<p><b>FIC</b> London 866-WXBRIEF (Toll free within Canada) or 866-541-4104 (Toll free within Canada &amp; USA)</p> <p><b>ACC</b> (IFR only) Moncton 506-867-7177 or 866-480-8200.</p> <p><b>WX</b> METAR H24 TAF H24, issue times: 00, 06, 12, 18Z</p>
<b>SERVICES</b>	Call out chg may be levied for one or more svcs
<b>FUEL</b>	100LL H24 self-serve, JA (FSII avbl) 12-21Z± Mon-Fri, JA-1 (FSII avbl) 08-24Z±
<b>OIL</b>	All
<b>S</b>	1(ltd, for lgt acft), 2,4,5,6
<b>ARFF</b>	PARTICIPATING CAT 5 10-04Z±, O/T call out chg.
<b>JASU</b>	CE8, CA2
<b>PVT ADV</b>	Atlantic Flt Centre 123.3 12-21Z± Mon-Fri 506-634-5565 O/T 506-650-8402, exc hols; Air Canada Ground Handling 130.37 506-632-1524
<b>MIL CON</b>	ASIG Canada (Irving Oil) 506-653-7409

## NEW BRUNSWICK

## AERODROME / FACILITY DIRECTORY

## SAINT JOHN NB (Cont'd)

CYSJ

<b>RWY DATA</b>	Rwy 05(049°)/23(229°) 7201x148 ASPH Thlds 05 & 23 displ 197' Rwy 14(138°)/32(318°) 5100x148 ASPH Rwy 14 down 0.84% Rwy 14/32 avbl as twy dur night when Rwy 05/23 RVR 1200(1/4sm) down to 600(1/8sm) RESA: All Rwys 492'
<b>RWY CERT</b>	Rwy 05 RVR 600(1/8sm)/Rwy 23 RVR 600(1/8sm) AGN IV Rwy 14 RVR 1200(1/4sm)/Rwy 32 RVR 1200(1/4sm) AGN IV
<b>TWY CERT</b>	Twy I AGN IIIB
<b>TWY</b>	Twy I Pvt
<b>RCR</b>	Opr CRFI and win maint avbl ltd hrs. PCN
<b>LIGHTING</b>	05-AN(TE HI CL), 23-AN(TE HI CL), 14-AS(TE ME) P2, 32-AO(TE ME) P2
<b>COMM</b>	
<b>RADIO</b>	118.5 236.6 PTC avbl (E) (emerg only 506-646-7225)
<b>RCO</b>	London rdo 123.475 (FISE) 126.7 (bcst)
<b>MF</b>	rdo 118.5 5NM 3400 ASL (CAR 602.98)
<b>PAL</b>	Moncton Ctr 124.3 135.5 270.8
<b>NAV</b>	
<b>DME</b>	YJH 112.2 Ch 59 N45 18 15 W65 53 28 (312')
<b>ILS</b>	ISJ 110.5 (Rwy 23) RVR IDM 108.3 (Rwy 05) RVR
<b>PRO</b>	Pursuant to CAR 602.96, in vis conds blw 1/8sm with an RVR of 600 or greater, an IFR clnc must be obtained prior to taxiing for dep and acft are not auth to taxi when another acft is on the maneuvering area, or on apch to any rwy. Ctc CYSJ FSS for tfc status. Pilots should refer to Canadian Airport Charts (CAC) to obtain details on established hot spots, prior to operating on maneuvering areas. CAC are available for free on the NAV CANADA website. <b>Reduced/Low Visibility Procedures:</b> See CAP Tkof and ldg in grass adj rwys or twys by fixed-wing acft not auth.



## NEW BRUNSWICK

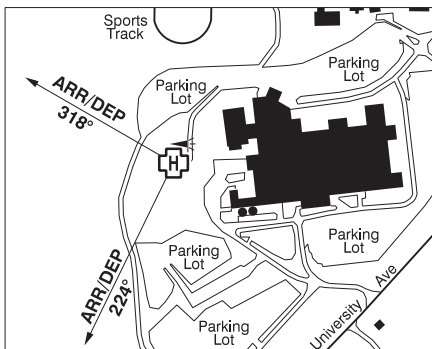
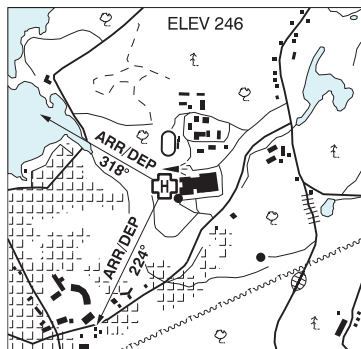
AERODROME / FACILITY DIRECTORY

**SAINT JOHN VFR TERMINAL PROCEDURES CHART - TRAINING AREAS (Cont'd)**

<b>NAME</b>	<b>IDENT</b>	<b>LAT/LONG</b>
BARNESVILLE	VCBRN	N45° 26' 30" W065° 44' 00"
COLESON COVE GENERATING STATION	VCCGS	N45° 09' 18" W066° 12' 00"
GONDOLA POINT	VCGON	N45° 26' 12" W065° 59' 00"
GRAND BAY	VCBAY	N45° 18' 42" W066° 11' 36"
HAMPTON	VCHPN	N45° 29' 42" W065° 50' 06"
MISPEC	VCMIS	N45° 12' 48" W065° 56' 48"
ST. MARTINS	VCSTM	N45° 20' 54" W065° 32' 48"

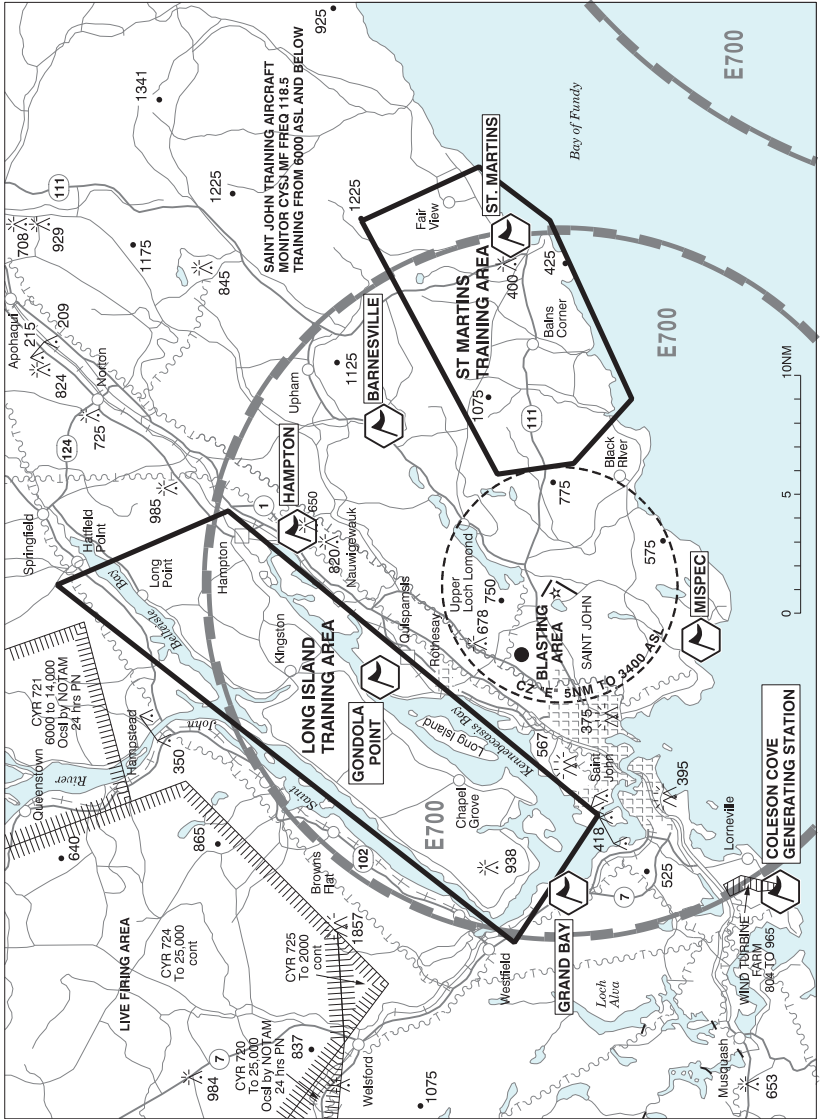
## SAINT JOHN (SAINT JOHN REGIONAL HOSPITAL) NB (Heli)

CSN6



<b>REF</b>	N45 18 08 W66 05 17 1.5N 18°W (2013) UTC-4(3) Elev 246' A5003
<b>OPR</b>	Saint John Regional Hospital Atlantic Health Sciences Corp 506-648-6614 Cert PPR
<b>FLT PLN</b>	
<b>FIC</b>	London 866-WXBRIEF (Toll free within Canada) or 866-541-4104 (Toll free within Canada & USA)
<b>ACC</b>	(IFR only) Moncton 506-867-7177 or 866-480-8200.
<b>HELI DATA</b>	FATO/TLOF 92' x 92' ASPH Safety Area 122' x 122' Max heli overall length 61' Rstd to medevac & govt use
<b>RCR</b>	Opr Ltd win maint
<b>LIGHTING</b>	RF(FL)
<b>COMM</b>	
<b>RCO</b>	London rdo 123.475 (FISE) 126.7 (bcst)
<b>ATF</b>	tfc 123.2 5NM 3300 ASL
<b>PRO</b>	Arr/dep 318° and 224° fr heli, slope 8% (H3)
<b>CAUTION</b>	Lgtd smokestack 377 ASL (126 AGL) 490' SE fr heli. Lgtd smokestack 405 ASL (205 AGL) aprx 440' SE fr heli. Lgtd windsock 149' NE fr heli.

**SAINT JOHN VFR TERMINAL PROCEDURES CHART - TRAINING AREAS**



## NEW BRUNSWICK

AERODROME / FACILITY DIRECTORY

**SAINT JOHN VFR TERMINAL PROCEDURES CHART - TRAINING AREAS (Cont'd)**

<b>NAME</b>	<b>IDENT</b>	<b>LAT/LONG</b>
BARNESVILLE	VCBRN	N45° 26' 30" W065° 44' 00"
COLESON COVE GENERATING STATION	VCCGS	N45° 09' 18" W066° 12' 00"
GONDOLA POINT	VCGON	N45° 26' 12" W065° 59' 00"
GRAND BAY	VCBAY	N45° 18' 42" W066° 11' 36"
HAMPTON	VCHPN	N45° 29' 42" W065° 50' 06"
MISPEC	VCMIS	N45° 12' 48" W065° 56' 48"
ST. MARTINS	VCSTM	N45° 20' 54" W065° 32' 48"

# CANADA WATER AERODROME SUPPLEMENT

Effective 0901Z 19 March 2026 to 0901Z 18 February 2027

## B92 AERODROME/FACILITY DIRECTORY

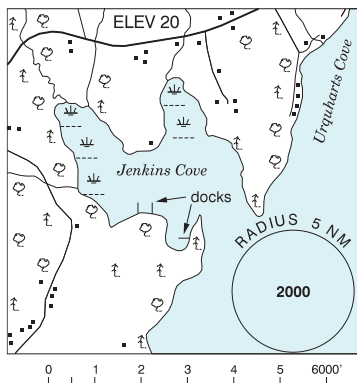
### KAMLOOPS FSS – RCO

Victoria 119.7 (RAAS) 08-14Z† (N48 38 W123 25)

### KARS / JENKINS COVE NB

CJO3

<b>REF</b>	N45 35 38 W65 57 25 1.3ESE 17°W (2017) UTC-4(3) Elev 20' A5003
<b>OPR</b>	Richard Pattie 506-485-1122 Reg
<b>PF</b>	B-1 C-2,5
<b>FLT PLN</b>	<p><b>FIG</b> London 866-WXBRIEF (Toll free within Canada) or 866-541-4104 (Toll free within Canada &amp; USA)</p> <p><b>ACC</b> (IFR only) Moncton 506-867-7177 or 866-480-8200.</p>
<b>SERVICES</b>	
<b>S</b>	5
<b>A/D DATA</b>	Open water May-Dec
<b>COMM</b>	
<b>ATF</b>	tfc 123.05 5NM 3000 ASL



### KASBA LAKE NT

CJP5

<b>REF</b>	N60 17 W102 31 7°E (2013) UTC-6(5) Elev 1089' A5024 A5031
<b>OPR</b>	Kasba Lake Lodge 250-248-3572 Reg PPR
<b>PF</b>	B-1,2,5 PN Oprg Jun15-Sep 1
<b>FLT PLN</b>	<p><b>FIG</b> Edmonton 866-WXBRIEF (Toll free within Canada) or 866-541-4102 (Toll free within Canada &amp; USA)</p>
<b>SERVICES</b>	
<b>FUEL</b>	100LL, JA Prior amg thru Opr Jun 15 - Aug 15
<b>A/D DATA</b>	Open water Jun-Oct. Sand beach.
<b>COMM</b>	
<b>ATF</b>	UNICOM ltd hrs O/T tfc 122.8 5NM 4200 ASL

