

---

# FLIGHT PLAN & SITE SURVEY

---

A 160-4144 CHINOOK WINDS R/C CLUB- CHINOOK WINDS  
RC CLUB

July 10, 2026



**IMPORTANT NOTICE**

Please ensure you have received all required authorizations prior to flight. This Site Survey was created using RPAS Wilco. The user accepts all responsibility for the accuracy of the information.

Terms & Conditions: [rpaswilco.com/#tnc](https://rpaswilco.com/#tnc)

# Mission Information

A 160-4144 CHINOOK WINDS R/C CLUB- CHINOOK WINDS RC CLUB

## FLIGHT DETAILS

Reference No:	<b>MAAC-160-4144</b>
Project Name:	<b>CHINOOK WINDS R/C CLUB</b>
Pilot Name:	<b>MAAC</b>
Pilot Certificate:	
Mission Type:	<b>VLOS</b>
Flight Start:	<b>July 10, 2026 10:52 AM</b>
Flight End:	<b>July 10, 2026 11:52 AM</b>

## LOCATION DETAILS

Flight Address:	<b>CHINOOK WINDS RC CLUB</b>
Latitude:	<b>50° 38' 6.80" N ( 50.635 )</b>
Longitude:	<b>113° 51' 6.00" W ( -113.852 )</b>
Field Elevation:	<b>3386 ft MSL</b>
Altitude / Radius:	<b>400 ft / 926 m ( 0.5 nm )</b>
Classification:	<b>UNCONTROLLED</b>
FIR / Contact:	<b>CZEG / 780-890-8397</b>

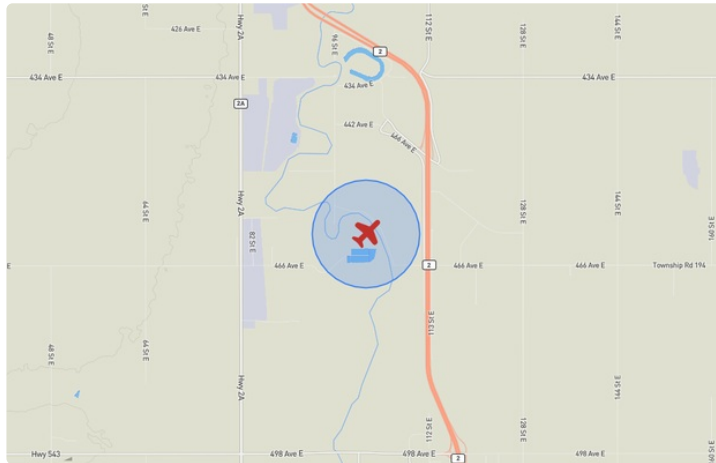
## REPORT CONTENTS

Site Survey • Obstacles (if available) • Nearby Aerodromes • Canadian Aviation Regulations • GFA • Aerodrome Supplements • METAR & TAF • NOTAMs • CFS





# Flight Map & MODEL Details

MISSION LOCATION SURVEY

## FLIGHT AREA MAP



## MISSION LOCATION DETAILS

ROLE	LATITUDE	LONGITUDE
 MODEL	50° 38' 6.80" N 50.635	113° 51' 6.00" W -113.852
 Pilot		
 Payload Op.		
 Observer		

# Airspace Classification

MISSION LOCATION SURVEY

## AIRSPACE MAP



## OVERLYING AIRSPACES

Class	Name	Floor	Ceiling
E	Calgary, AB a) [CAE]	5800MSL	18000MSL
C	Calgary, AB b) [TCA]	8000MSL	12500MSL

Planned flight altitude is below the lowest documented airspace layer

## NEAREST AERODROMES & DISTANCE FROM OPERATION

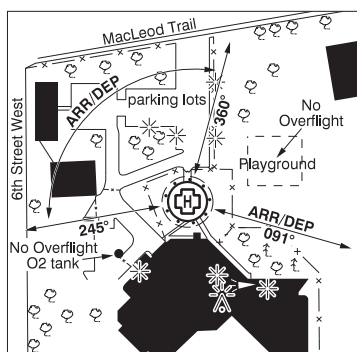
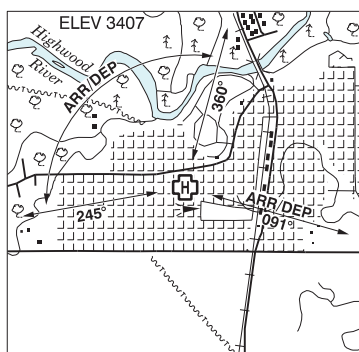
HIGH RIVER (HOSPITAL) (CHR2 - HELIPORT - Cert)	Lat: 50.576	Long: -113.879	6.853KM	3.7NM	S
<b>Operator:</b> ALBERTA HEALTH SERVICES: PHONE: 403-652-2200, POST: UNKNOWN <b>FIR Contact:</b> 780-890-8397					
FOOTHILLS REGIONAL AIRPORT (CEN4 - AERODROME - Reg)	Lat: 50.533	Long: -113.841	11.384KM	6.147NM	S
<b>Operator:</b> FOOTHILLS COUNTY: PHONE: 403-601-1654, PHONE: 403-652-2341, POST: UNKNOWN <b>FIR Contact:</b> 780-890-8397					
OKOTOKS AIR RANCH AIRPORT (CFX2 - AERODROME - Cert)	Lat: 50.734	Long: -113.934	12.388KM	6.689NM	NW
<b>Operator:</b> AIR RANCH LTD.: PHONE: 403-200-5909, POST: UNKNOWN <b>FIR Contact:</b> 780-890-8397					

## ALBERTA

## AERODROME / FACILITY DIRECTORY

## HIGH RIVER (HOSP) AB (Heli)

CHR2



<b>REF</b>	N50 34 34 W113 52 46 Adj S 15°E (2013) UTC-7(6) Elev 3407' A5005
<b>OPR</b>	Alberta Health Services 403-652-2200 Cert NVIS OPS AUTH PPR
<b>FLT PLN</b>	
<b>    FIC</b>	Edmonton 866-WXBRIEF (Toll free within Canada) or 866-541-4102 (Toll free within Canada & USA)
<b>    ACC</b>	Edmonton IFR 888-358-7526
<b>HELI DATA</b>	FATO/TLOF 67' dia ASPH Safety Area 89' dia Max heli overall length 44.8' (CAR 602.96)
<b>    RCR</b>	Opr
<b>LIGHTING</b>	RW(ME) yellow
<b>COMM</b>	
<b>    MF</b>	tfc 123.0 5NM 6400 ASL centered on Foothills Regional Airport A/D 3.0NM SE (CAR 602.98)
<b>PRO</b>	Arr/dep 091° fr heli, (H1) (CAR 602.96). Arr/dep 245° to 360° fr heli, (H1) (CAR 602.96). NVIS reqrd for night use, all flt paths (CAR 602.96). Avoid flt over playground adj NE of heli. No flt over oxygen tanks adj WSW of heli.
<b>CAUTION</b>	Lgtd twr 3938 ASL (362 AGL) aprx 2.8NM SSW. Trees 79 AGL W, NW, NNE and SE of heli. Ultra-light tfc at Foothills Regional Airport CEN4 2NM SE

## ALBERTA

## AERODROME / FACILITY DIRECTORY

## HIGH RIVER / FOOTHILLS REGIONAL AIRPORT AB

CEN4

<b>REF</b>	N50 32 00 W113 50 29 2.5 SSE 14°E (2014) UTC-7(6) Elev 3447' VTA A5005 LO2 T1 CAP	
<b>OPR</b>	Foothills County 403-652-2341 Reg	
<b>PF</b>	C-2,3,4,5,6	
<b>FLT PLN</b>		
<b>FIG</b>	Edmonton 866-WXBRIEF (Toll free within Canada) or 866-541-4102 (Toll free within Canada & USA)	
<b>ACC</b>	Edmonton IFR 888-358-7526	
<b>SERVICES</b>		
<b>FUEL</b>	100LL Foothills Flight Center Inc. 403-603-4091, JA-1 Murrays Aircraft Repair 403-648-8910 Self-serve, all major credit & debit cards	
<b>OIL</b>	All	
<b>S</b>	1,4,5,6 2,3: High River Airmotive 403-601-9913 Murrays Aircraft Repair 403-648-8910	
<b>RWY DATA</b>	Rwy 07(066°)/25(246°) 4179x75 ASPH Thld 07 displ 621' Rwy 15(145°)/33(325°) 2726x55 GRVL Rwy 33 down 1.28% Opr Ltd win maint Rwy 07/25. Ltd maint Rwy 15/33, sfc soft/ruf.	
<b>LIGHTING</b>	07-(TE ME)P1 3.3°, 25-(TE ME)P1 ARCAL-123.0 type K	
<b>COMM</b>		
<b>MF</b>	Foothills tfc 123.0 5NM 6400 ASL (CAR 602.98)	
<b>PRO</b>	Practice auto-rotations and run-on landings by helis not auth on rwys. Caution dur hover ops at fuel centres due rotor wash. Air taxi ops preferred over infield areas whenever possible. Circuit tng flts proh 04-14Z† (CAR 602.96).	
<b>CAUTION</b>	Ultra-light activity on field. Acft at opposite ends of Rwy 07/25 may not be visible to each other. Wildlife in vic	

## ALBERTA

## AERODROME / FACILITY DIRECTORY

## CALGARY / OKOTOKS AIR RANCH AIRPORT AB

CFX2

<b>REF</b>	N50 44 02 W113 56 04 15S 15°E (2012) UTC-7(6) Elev 3601' A1904 A5005 LO2 T1	
<b>OPR</b>	Air Ranch Ltd. 403-200-5909 Cert	
<b>PF</b>	B-7,8 C-3 D-2,4,5,6	
<b>FLT PLN</b>		
<b>FIC</b>	Edmonton 866-WXBRIEF (Toll free within Canada) or 866-541-4102 (Toll free within Canada & USA)	
<b>ACC</b>	Edmonton IFR 888-358-7526	
<b>SERVICES</b>		
<b>S</b>	1,2,4,5,6	
<b>RWY DATA</b>	Rwy 16(163°)/34(343°) 3025x50 ASPH Thld 16 displ 98' Rwy 34 up 1.64%	
<b>RWY CERT</b>	Rwy 16/34 AGN I	
<b>RCR</b>	Opr Rwy maint 15-24Z† Mon-Fri, 15-19Z† Sat-Sun, O/T call out chg may be levied	
<b>LIGHTING</b>	16-(TE LO), 34-(TE LO) ARCAL-122.7 type J	
<b>COMM</b>		
<b>MF</b>	UNICOM ltd hrs O/T ftc 122.7 5NM 6700 ASL excluding the airspace that lies within Calgary TCA class C airspace (CAR 602.98)	
<b>PRO</b>	Rgt hand circuits Rwy 34 (CAR 602.96).	
<b>CAUTION</b>	CRF4 located aprx 2NM NW. 43 AGL lamp post 417' S Thld Rwy 34 and 268' left of extended centre line. Wildlife in vic. Extv waterfowl activity vic A/D year round. Frost heaves in rwy dur spring thaw. Church steeple 133 AGL aprx 0.7NM NW Thld 16. Tower 306 AGL aprx 0.6NM SW Thld 34.	