
FLIGHT PLAN & SITE SURVEY

D 174-4169 LAKEHEAD AEROMODELERS- BOULEVARD
LAKE

July 10, 2026



IMPORTANT NOTICE

Please ensure you have received all required authorizations prior to flight. This Site Survey was created using RPAS Wilco. The user accepts all responsibility for the accuracy of the information.

Terms & Conditions: rpswilco.com/#tnc

Mission Information

D 174-4169 LAKEHEAD AEROMODELERS- BOULEVARD LAKE

FLIGHT DETAILS

Reference No:	MAAC-174-4169
Project Name:	LAKEHEAD AEROMODELERS
Pilot Name:	MAAC
Pilot Certificate:	
Mission Type:	VLOS
Flight Start:	July 10, 2026 12:53 PM
Flight End:	July 10, 2026 01:53 PM

LOCATION DETAILS

Flight Address:	BOULEVARD LAKE
Latitude:	48° 27' 49.00" N (48.464)
Longitude:	89° 11' 42.00" W (-89.195)
Field Elevation:	692 ft MSL
Altitude / Radius:	400 ft / 926 m (0.5 nm)
Classification:	UNCONTROLLED
FIR / Contact:	CZWG / 204-983-8338

REPORT CONTENTS

Site Survey • Obstacles (if available) • Nearby Aerodromes • Canadian Aviation Regulations • GFA • Aerodrome Supplements • METAR & TAF • NOTAMs • CFS

Airspace Classification

MISSION LOCATION SURVEY

AIRSPACE MAP



OVERLYING AIRSPACES

Class	Name	Floor	Ceiling
E	T681 Fixed RNAV Route	2200AGL	18000MSL
E	3.3.1-49 [TA]	3000MSL	12500MSL

Planned flight altitude is below the lowest documented airspace layer

NEAREST AERODROMES & DISTANCE FROM OPERATION

THUNDER BAY (CKE6 - WATERDROME - Reg)	Lat: 48.45	Long: -89.167	2.58KM	1.393NM	SE
Operator: LAKEHEAD AVN; WILDERNESS N AER; HARBOUR COMM; LAKEHEAD AWYS: PHONE: 807-344-3594 , PHONE: 807-355-9552, PHONE: 807-683-8081, PHONE: 807-983-2047, POST: UNKNOWN FIR Contact: 204-983-8338					
THUNDER BAY (HEALTH SCIENCE CENTRE) (CTB2 - HELIPORT - Reg)	Lat: 48.423	Long: -89.27	7.121KM	3.845NM	SW
Operator: THUNDER BAY REGIONAL HEALTH SCIENCE CENTRE: PHONE: 807-684-6100 +6509, POST: 980 Oliver Road, Thunder Bay, ON P7B 6V7 FIR Contact: 204-983-8338					
THUNDER BAY (CYQT - AERODROME - Cert)	Lat: 48.372	Long: -89.322	13.83KM	7.468NM	SW
Operator: THUNDER BAY INTL APRTS AUTHORITY INC.(TBIAAI): PHONE: 807-473-2600, POST: UNKNOWN FIR Contact: 204-983-8338					

CANADA WATER AERODROME SUPPLEMENT

Effective 0901Z 19 March 2026 to 0901Z 18 February 2027

AERODROME/FACILITY DIRECTORY B261

THOMPSON MB (Cont'd)

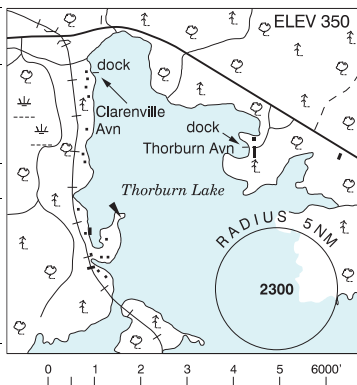
CKD6

COMM	<p>RADIO 122.5 (V) at land A/D 3.2NM NNW (emerg only 204-677-6979)</p> <p>RCO Edmonton rdo 123.55 (FISE) 126.7 (bcst)</p> <p>ATIS 127.65</p> <p>MF Thompson rdo 122.5 5NM centred on Thompson land A/D 3.2NM NNW 4000 ASL (CAR 602.98)</p> <p>UNICOM 122.8</p>
NAV	<p>VOR/DME YTH 112.9 Ch 76 N55 48 40 W97 49 31 (791')</p>
CAUTION	<p>Floating logs & debris. Strong current. Land A/D 3.2NM NNW. Extv ultralight tfc in vic, practice area btwn YTH 280 rad cw to 310 rad, 10 to 20 DME, fr sfc to 3000 ASL Apr 01-Oct 31. Heli acft in vic.</p>

THORBURN LAKE NL

CCW5

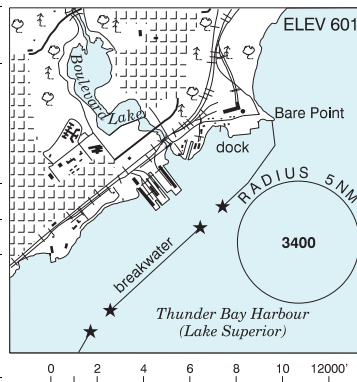
REF	<p>N48 16 W54 09 20°W (2012) UTC-3½(2½) Elev 350' A5012</p>
OPR	<p>Clarenceville Avn Ltd 709-543-2274 Reg PN Thorburn Avn Ltd 709-466-7823/7046 Reg PN</p>
PF	C-1,2 D-1,2,3,4,5,6
FLT PLN	<p>FIG London 866-WXBRIEF (Toll free within Canada) or 866-541-4104 (Toll free within Canada & USA)</p> <p>ACC (IFR only) Gander 709-651-5225 or 888-751-5225.</p>
SERVICES	Thorburn Avn Ltd
FUEL	100LL
OIL	All
S	1,2,4,5
A/D DATA	Open water mid Apr-mid Nov. Depth 8', ramp, mooring & beaching in front of hg.



THUNDER BAY ON

CKE6

REF	<p>N48 27 W89 10 Adj NE 3°W UTC-5(4) Elev 601' A5001 A5008</p>
OPR	<p>Harbour Comm 807-344-3594; Lakehead Airways 807-355-9552; Lakehead Aviation 807-683-8081; Wilderness North Air 807-983-2047 Reg</p>
PF	B-1 C-2,3,4,5,6
CUST	AOE/15/SEAPL 888-226-7277
FLT PLN	<p>Pilots to open/close VFR flt plan with London rdo, FISE or by phone</p> <p>FIG London 866-WXBRIEF (Toll free within Canada) or 866-541-4104 (Toll free within Canada & USA)</p>
SERVICES	
FUEL	100LL Call out chg may apply
OIL	All
S	2,3,5



CANADA WATER AERODROME SUPPLEMENT

Effective 0901Z 19 March 2026 to 0901Z 18 February 2027

B262 AERODROME/FACILITY DIRECTORY

THUNDER BAY ON (Cont'd)

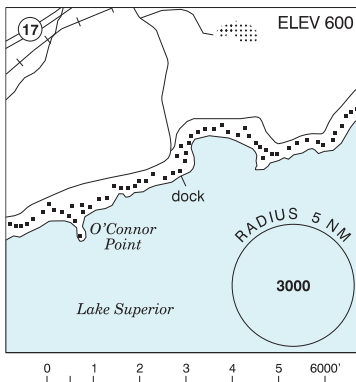
CKE6

A/D DATA	Open water mid May-mid Nov. Mud bottom, wharfs. Skiplanes in win.
COMM	
ATF	tfc 122.8 5NM 3600 ASL excluding Thunder Bay CZ
NAV	
DME	YQT 114.1 Ch 88 N48 15 14 W89 26 15 (1641')
CAUTION	Heaviest swells 14-22Z (DT 13-21Z). SE winds cause heavy seas. Thunder Bay land A/D 7.8NM SW. Extv flt tng within 35NM W & N of CYQT CZ to 6000 ASL. Win ops: Variable ice conds, ctc opr.

THUNDER BAY / ELDORADO ON

CTE4

REF	N48 34 18 W88 47 32 21ENE 4°W (2026) UTC-5(4) Elev 600' A5001 A5008
OPR	Francis Hane 519-729-2443 Reg
FLT PLN	Pilots to open/close VFR flt plan with London rdo, FISE or by phone
FIC	London 866-WXBRIEF (Toll free within Canada) or 866-541-4104 (Toll free within Canada & USA)
A/D DATA	Open water mid May-mid Nov.
COMM	
ATF	UNICOM Ltd hrs O/T tfc 123.0 3NM 3000 ASL centred on Eldorado land A/D adj W.



THUNDER BAY FSS - RCO

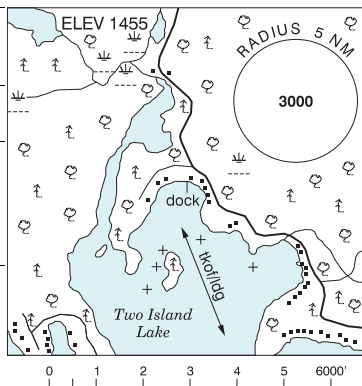
Island Lake 122.2 (RAAS) (N53 51 W94 39)

Pickle Lake 122.2 (RAAS) 11-02Z (N51 27 W90 13)

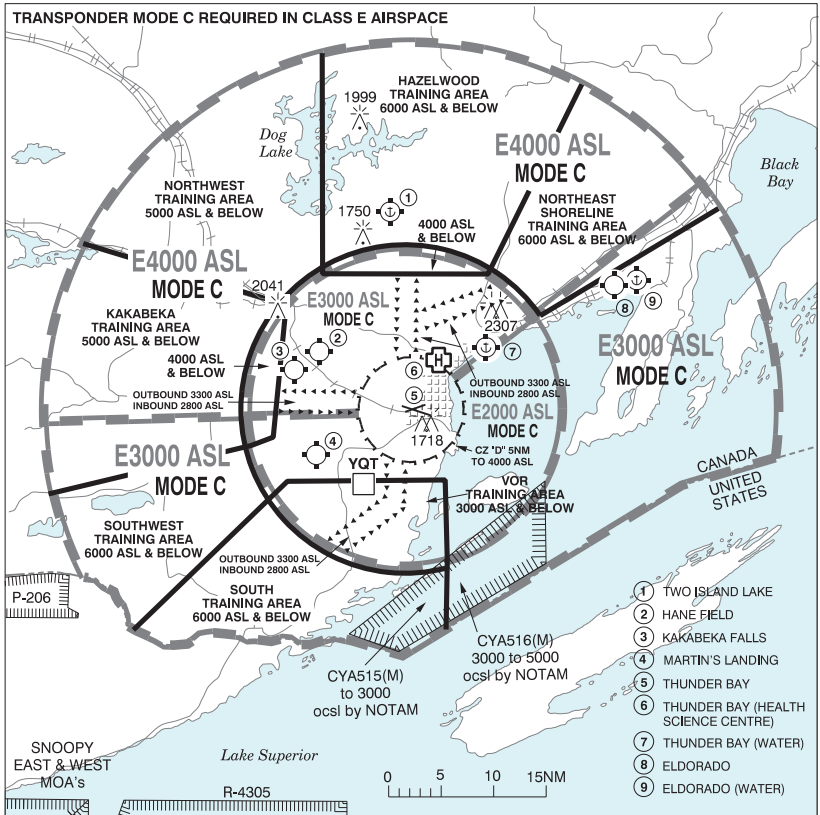
THUNDER BAY / TWO ISLAND LAKE ON

CTI2

REF	N48 41 15 W89 21 36 19N 4°W (2018) UTC-5(4) Elev 1455' A5001 A5008
OPR	Donald R. Plumridge 807-767-5586 or 807-355-6830 Reg
FLT PLN	Pilots to open/close VFR flt plan with London rdo, FISE or by phone
FIC	London 866-WXBRIEF (Toll free within Canada) or 866-541-4104 (Toll free within Canada & USA)
A/D DATA	Open water May 10-Nov 15



THUNDER BAY VFR TERMINAL PROCEDURES CHART

**TRAINING AREA ARRIVALS**

- Join arrival route as close as possible to starting point.
- Fly the route on the depicted track and altitude until advised by Thunder Bay Tower.

TRAINING AREA DEPARTURES

- Join departure route as close as possible to starting point.
- Fly the route on the depicted track and altitude.

CAUTION TO NON-PARTICIPATING PILOTS: FREQUENT USE OF DEPICTED VFR ROUTES

ONTARIO

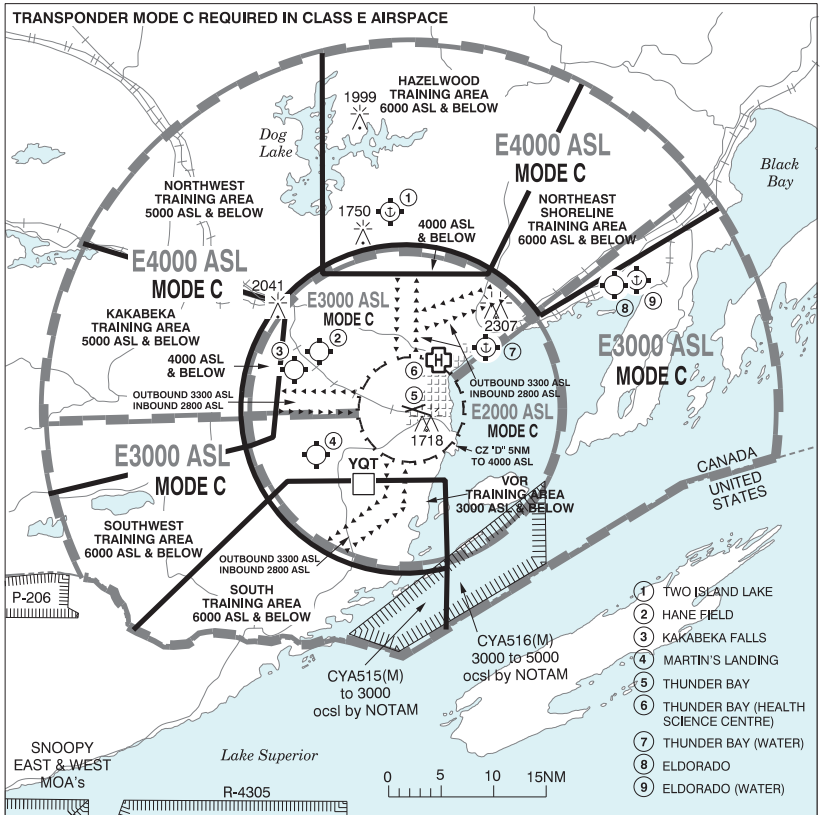
AERODROME / FACILITY DIRECTORY

THUNDER BAY (HEALTH SCIENCE CENTRE) ON (Heli)

CTB2

REF	N48 25 24 W89 16 11 Adj 4°W (2016) UTC-5(4) Elev 715' A5001 A5008	
OPR	Thunder Bay Regional Health Science Centre 807-684-6100 ext 6509 Cert PPR	
FLT PLN	Pilots to open/close VFR flt plan with London rdo, FISE or by phone	
FIC	London 866-WXBRIEF (Toll free within Canada) or 866-541-4104 (Toll free within Canada & USA)	
HELI DATA	FATO/TLOF 87' dia CONC Safety Area 116' dia Max heli overall length 57.5' RCR Opr	
LIGHTING	RY(LO) Green	
COMM		
RADIO	Thunder Bay 118.1 (E) 04-11Z† (emerg only 807-473-4311)	
RCO	London rdo 122.375 (FISE) 126.7 (bcst)	
TWR	Thunder Bay 118.1 (E) 11-04Z† (emerg only 807-473-5252)	
MF	Thunder Bay rdo 118.1 04-11Z† centred on Thunder Bay aprt 3.8NM SW 4000 ASL (CAR 602.98)	
NAV		
DME	Thunder Bay YQT 114.1 Ch 88 N48 15 14 W89 26 15 (1641')	
PRO	Arr/dep 097° to 126° fr heli, slope 8% (H3). Arr/dep 306° to 315° fr heli, slope 8% (H3). Day/night use.	
CAUTION	Extv flt tng within 35NM W & N of CYQT CZ to 6000 ASL. Terrain rises abruptly to 1600 ASL 4.7NM S of heli.	

THUNDER BAY VFR TERMINAL PROCEDURES CHART

**TRAINING AREA ARRIVALS**

- Join arrival route as close as possible to starting point.
- Fly the route on the depicted track and altitude until advised by Thunder Bay Tower.

TRAINING AREA DEPARTURES

- Join departure route as close as possible to starting point.
- Fly the route on the depicted track and altitude.

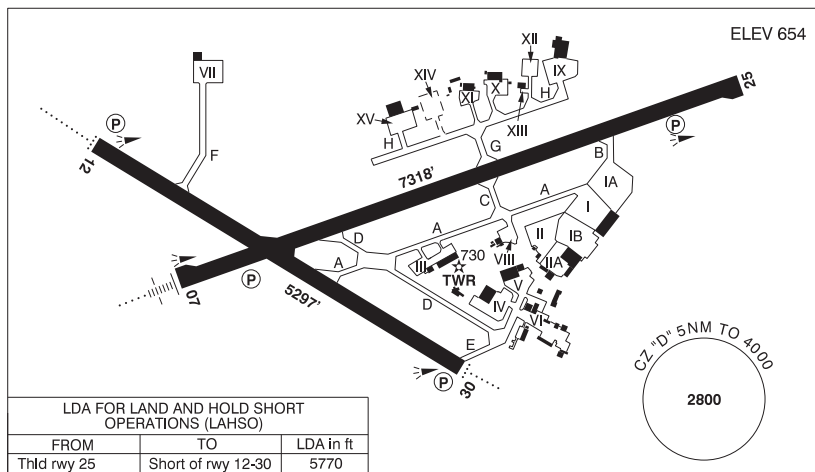
CAUTION TO NON-PARTICIPATING PILOTS: FREQUENT USE OF DEPICTED VFR ROUTES

ONTARIO

AERODROME / FACILITY DIRECTORY

THUNDER BAY ON

CYTQ



REF	N48 22 19 W89 19 18 Adj SW 4°W (2014) UTC-5(4) Elev 654' A5001 A5008 LO4 HI4 T2 CAP
OPR	Thunder Bay Intl Apts Authority Inc (TBIAAI) 807-473-2600 H24 Cert Ldg fees
PF	A-1,2,3,6,7 C-4,5
CUST	AOE/40 888-226-7277 13-05Z‡
FLT PLN	Pilots to open/close VFR flt plan with London rdo, FISE or by phone
FIG	London 866-WXBRIEF (Toll free within Canada) or 866-541-4104 (Toll free within Canada & USA)
WX	METAR H24. TAF H24, issue times: 02, 08, 14, 20Z. WxCam
SERVICES	
FUEL	100LL, JA-1 (FSII avbl), IP, SP, HPR 1030-0330Z‡
OIL	All & Turbo 35
S	1,2,3,4,5,6,7
ARFF	DESIGNATED CAT 7 0900-0530Z‡, O/T CAT 5 (CAT 7 1hr PN 807-577-3557)
SUP FL	LHOX, D & A-ice
JASU	CE13, 15
PVT ADV	Thunder Bay Flight Refuelling (World Fuel Services) 123.2 1030-0330Z‡ O/T 807-577-1178; SkyFill Aviation Refuelling Inc (Shell) 122.85 1030-0230Z‡ O/T 807-475-5915; Perimeter Aviation 122.35 807-627-4201
MIL CON	SkyFill Aviation Refuelling Inc (Shell) 122.85 807-475-5915

ONTARIO

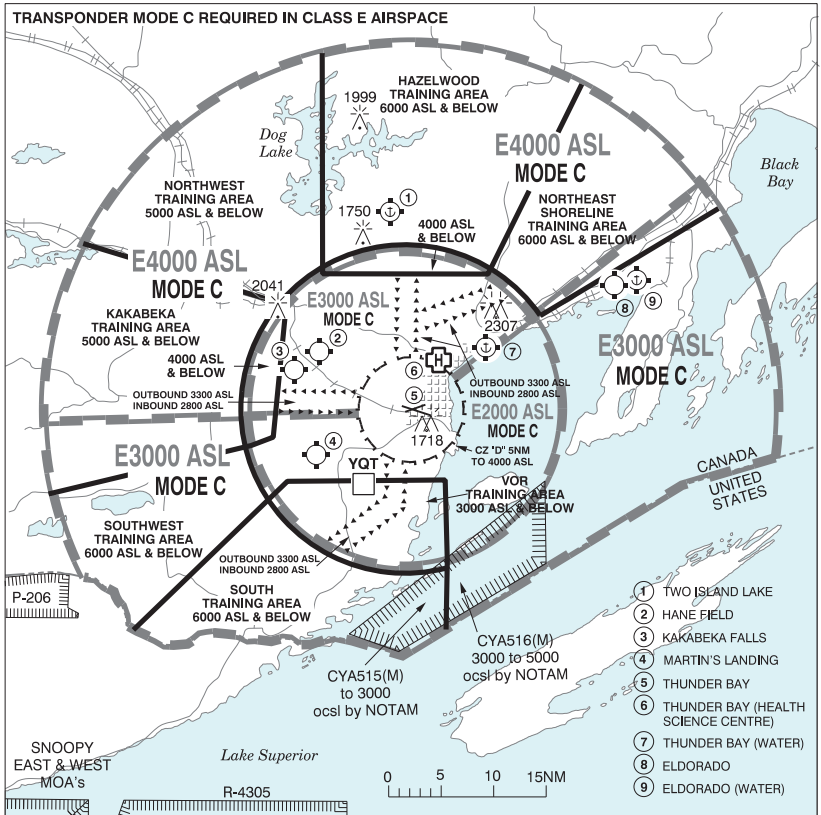
AERODROME / FACILITY DIRECTORY

THUNDER BAY ON (Cont'd)

CYQT

RWY DATA	Rwy 07(074°)/25(254°) 7318x148 ASPH Rwy 12(125°)/30(305°) 5297x150 ASPH RESA: 07/25 492' RESA: 12 321'; 30 492'
RWY CERT	Rwy 07 RVR 1200(1/4sm)/Rwy 25 RVR 1200(1/4sm) AGN IV Rwy 12 RVR 1200(1/4sm)/Rwy 30 RVR 1200(1/4sm) AGN IIIB
TWY CERT	Twy: A, C, D AGN IIIB
TWY	Twy E (NE of D) uncontrolled. Twy F extends for 225' then changes to apron VII. Private, uncontrolled beyond hold line. Twy H: Private.
APRON	Apron I rstd to sked commercial air carrier by stand assignment only fr TBIAAI. Acft shall not taxi between ATB and pushed back acft. All sked acft shall be directed into prkg posn by Marshalling Services. Taxiing acft to remain on taxilanes. Uncontrolled. Apron II: Itinerant acft prkg. Uncontrolled. Apron III: E entrance ltd to gnd tfc. Aprons III, IV, V, VII, VIII, IX, X, XI, XII, XIII, XV: Private and uncontrolled. Aprons VI: Uncontrolled.
RCR	Opr CRFI, PCN
LIGHTING	07-AN (TE HI) P2, 25-(TE HI) P2, 12-AD AS(TE ME) P2, 30-AD(non-std 1700') AS(TE ME) P2
COMM	
RADIO	118.1 PTC avbl (E) 04-11Z‡ (emerg only 807-473-4311)
RCO	London rdo 122.375 (FISE) 126.7 (bcst)
ATIS	128.8
GND	121.9 11-04Z‡
TWR	118.1 (E) 11-04Z‡ (emerg only 807-473-5252) Admin/Supervisor 807-474-4245
MF	rdo 118.1 04-11Z‡ 5NM 4000 ASL (CAR 602.98)
ARR	Winnipeg Ctr 119.2
DEP	Winnipeg Ctr 119.2
PAL	Winnipeg Ctr 132.125
NAV	
DME	YQT 114.1 Ch 88 N48 15 14 W89 26 15 (1641')
DME	YTV 117.8 Ch 125 N48 22 11 W89 19 48 (676')
ILS	IQT 109.5 (Rwy 07) RVR
PRO	Rgt hand circuits Rwy 25 & 30 (CAR 602.96). See CAP for NOISE & NIGHT restrictions. ATS PPR REQUIREMENTS: Ctc Winnipeg ACC 204-984-5979 for the following; - IFR tng and Photo Survey within Thunder Bay Class E Transponder Airspace - VFR tng conducting simulated holds and inst apch VFR TRAINING PROCEDURES - See VTPC
CAUTION	Heli flood lghts 30 AGL N side of apron II. Lgtd obst 746 ASL 0.5NM NE Thld 25 (intxn Thunder Bay Express Way & Arthur street). Terrain rises abruptly to 1600 ASL 2NM SE of A/D. Extv flt tng within 35NM W & N of CYQT CZ to 6000 ASL. Extv bird and wildlife activity in vic of A/D. Railroad tracks SW of A/D in close proximity.

THUNDER BAY VFR TERMINAL PROCEDURES CHART

**TRAINING AREA ARRIVALS**

- Join arrival route as close as possible to starting point.
- Fly the route on the depicted track and altitude until advised by Thunder Bay Tower.

TRAINING AREA DEPARTURES

- Join departure route as close as possible to starting point.
- Fly the route on the depicted track and altitude.

CAUTION TO NON-PARTICIPATING PILOTS: FREQUENT USE OF DEPICTED VFR ROUTES