

---

# FLIGHT PLAN & SITE SURVEY

---

D 9004-5763 Zone D Manitoba - Northwestern Ontario- PFS -  
John Noon

July 10, 2026



**IMPORTANT NOTICE**

Please ensure you have received all required authorizations prior to flight. This Site Survey was created using RPAS Wilco. The user accepts all responsibility for the accuracy of the information.

Terms & Conditions: [rpswilco.com/#tnc](https://rpswilco.com/#tnc)

# Mission Information

D 9004-5763 ZONE D MANITOBA - NORTHWESTERN ONTARIO- PFS - JOHN NOON

## FLIGHT DETAILS

Reference No:	<b>MAAC-9004-5763</b>
Project Name:	<b>Zone D Manitoba - Northwestern Ontario</b>
Pilot Name:	<b>MAAC</b>
Pilot Certificate:	
Mission Type:	<b>VLOS</b>
Flight Start:	<b>July 10, 2026 11:54 AM</b>
Flight End:	<b>July 10, 2026 12:54 PM</b>

## LOCATION DETAILS

Flight Address:	<b>PFS - John Noon</b>
Latitude:	<b>50° 0' 0.00" N ( 50.0 )</b>
Longitude:	<b>100° 7' 4.80" W ( -100.118 )</b>
Field Elevation:	<b>1539 ft MSL</b>
Altitude / Radius:	<b>400 ft / 926 m ( 0.5 nm )</b>
Classification:	<b>UNCONTROLLED</b>
FIR / Contact:	<b>CZWG / 204-983-8338</b>

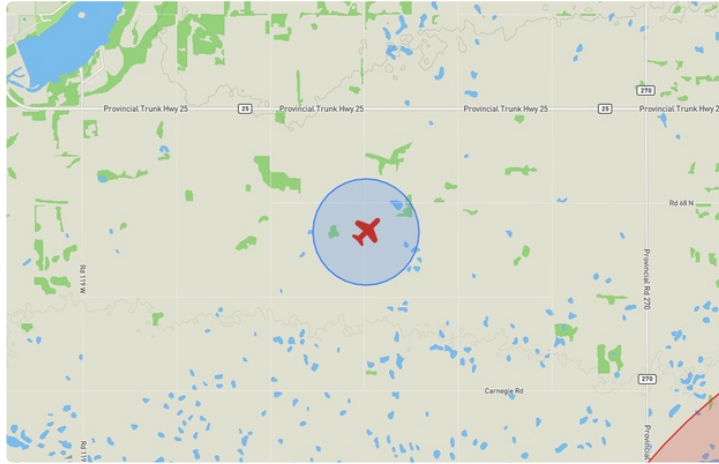
## REPORT CONTENTS

Site Survey • Obstacles (if available) • Nearby Aerodromes • Canadian Aviation Regulations • GFA • Aerodrome Supplements • METAR & TAF • NOTAMs • CFS





# Flight Map & MODEL Details

MISSION LOCATION SURVEY

## FLIGHT AREA MAP



## MISSION LOCATION DETAILS

ROLE	LATITUDE	LONGITUDE
 MODEL	50° 0' 0.00" N 50.0	100° 7' 4.80" W -100.118
 Pilot		
 Payload Op.		
 Observer		

# Airspace Classification

MISSION LOCATION SURVEY

## AIRSPACE MAP



## OVERLYING AIRSPACES

Class	Name	Floor	Ceiling
E	Brandon Muni, MB [TA]	700AGL	18000MSL
E	T691 Fixed RNAV Route	2200AGL	18000MSL

Planned flight altitude is below the lowest documented airspace layer

## NEAREST AERODROMES & DISTANCE FROM OPERATION

SPUD PLAINS (CRS5 - AERODROME - Reg) Lat: 49.991 Long: -100.313 14.002KM 7.56NM W

**Operator:** PAUL ADRIAANSEN: PHONE: 204-834-3866, POST: UNKNOWN **FIR Contact:** 204-983-8338

BRANDON MUNI (CYBR - AERODROME - Cert) Lat: 49.91 Long: -99.952 15.518KM 8.379NM SE

**Operator:** MUNICIPALITY: PHONE: 204-729-2166, POST: UNKNOWN **FIR Contact:** 204-983-8338

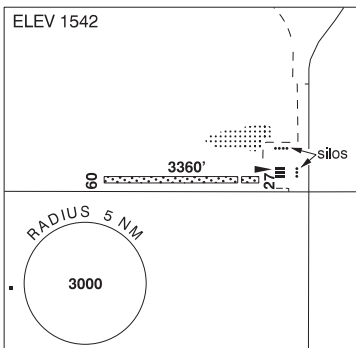
**MANITOBA**

**AERODROME / FACILITY DIRECTORY**

**WHEATLAND / SPUD PLAINS MB**

**CRS5**

<b>REF</b>	N49 59 26 W100 18 48 1.7SSW 5°E (2021) UTC-6(5) Elev 1542' A5007
<b>OPR</b>	Paul Adriaansen 204-834-3866 Reg PPR
<b>FLT PLN</b>	
<b>FIC</b>	Edmonton 866-WXBRIEF (Toll free within Canada) or 866-541-4102 (Toll free within Canada & USA)
<b>RWY DATA</b>	Rwy 09/27 3360x75 GRASS/CONC Thld 27 displ 374'
<b>RCR</b>	Opr 204-729-7241 No win maint
<b>COMM</b>	
<b>ATF</b>	tfc 123.2 5NM 4600 ASL
<b>CAUTION</b>	Grain leg 85' AGL E of rwy.

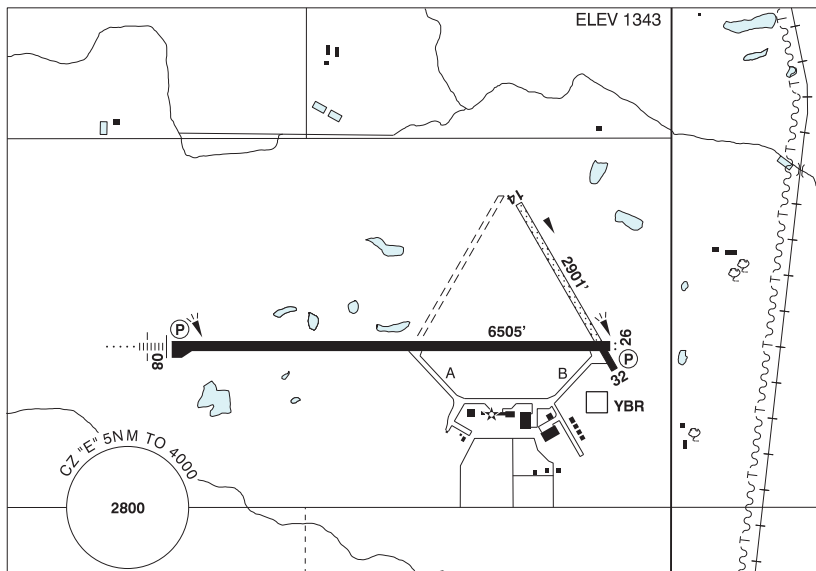


MANITOBA

AERODROME / FACILITY DIRECTORY

BRANDON MUNI MB

CYBR



<b>REF</b>	N49 54 36 W99 57 08 4N 6°E (2013) UTC-6(5) Elev 1343' A5007 LO4 HI4 CAP
<b>OPR</b>	Muni 204-729-2166 12-02Z‡ Mon-Fri, 14-24Z‡ Sat-Sun Cert Ldg fees
<b>PF</b>	A-1 C-2,3,4,5,6
<b>CUST</b>	AOE/15 888-226-7277 15-23Z‡
<b>FLT PLN</b>	Pilots to open/close VFR fit plan with Edmonton rdo, FISE or by phone.
<b>FIC</b>	Edmonton 866-WXBRIEF (Toll free within Canada) or 866-541-4102 (Toll free within Canada & USA)
<b>WX</b>	METAR 13-04Z‡ O/T METAR AUTO (see COMM). TAF H24, issue times: 00, 06, 12, 18Z. WxCam
<b>SERVICES</b>	Call out chg may be levied for one or more svc
<b>FUEL</b>	100LL (O/T self-serve credit card only), JA-1 (FSII avbl), SP, HPR 14-23Z‡ O/T call out chg
<b>OIL</b>	All
<b>S</b>	1,2,3,4 (ltd),5,6
<b>SUP FL</b>	D-Ice (avbl by truck)
<b>JASU</b>	CE16
<b>PVT ADV</b>	Brandon Flight Centre 122.95 204-728-7691
<b>RWY DATA</b>	Rwy 08(085°)/26(265°) 6505x150 asphalt Rwy 14(145°)/32(325°) 2901x60 treated gravel/asphalt First 438' Rwy 32 asphalt
<b>RWY CERT</b>	Rwy 08/26 AGN IIIB Rwy 14/32 AGN II
<b>APRON</b>	No power turns permitted on tml apron.
<b>RCR</b>	Opr Ltd win maint Rwy 14/32. Rwy 14/32 rstd to acft under 12,000 lbs. A/D maint 12-02Z‡ Mon-Fri, 14-24Z‡ Sat-Sun O/T 1 hr PN for AMSCR and CRFI. Call out charge may be levied. 204-729-7026.
<b>LIGHTING</b>	08-AN(TE HI) P2, 26-AS(TE HI) P2 ARCAL-122.1 type K avbl when FSS clsd

## MANITOBA

## AERODROME / FACILITY DIRECTORY

## BRANDON MUNI MB (Cont'd)

CYBR

<b>COMM</b>	
<b>RADIO</b>	122.1 (E) 13-04Z† (emerg only 204-728-7169)
<b>RCO</b>	Edmonton 123.275 (FISE) 126.7 (bcst)
<b>MF</b>	rdo 13-04Z† O/T tfc 122.1 5NM 4000 ASL (CAR 602.98)
<b>ARR</b>	Winnipeg Ctr 132.25
<b>DEP</b>	Winnipeg Ctr 132.25
<b>PAL</b>	Winnipeg Ctr 132.25
<b>AWOS</b>	128.175 04-13Z†
<b>NAV</b>	
<b>DME</b>	YBR 113.8 Ch 85 N49 54 18 W99 56 22 (1378')
<b>DME</b>	IBR 110.1 Ch 38 N49 54 31 W99 57 43 Pvt
<b>ILS</b>	IBR 110.1 (Rwy 08) Pvt
<b>PRO</b>	Rgt hand circuits Rwy 26 (CAR 602.96). Periodic extv glider ops to 4000 MSL. Gliders & tow acft opr fr infield S of Rwy 08/26. Glider & tow acft circuits S of Rwy 08/26. Rgt hand circuits Rwy 32 (CAR 602.96). Gliders & tow acft opr fr infield W of Rwy 14/32. Glider & tow acft circuits W of Rwy 14/32. Acft inbd fr the S may be requested to rpt crossing the Trans Canada Hwy. <b>ATS PPR REQUIREMENTS:</b> Ctc Winnipeg ACC 204-984-5979 for IFR tng and photo survey within Brandon Class E Airspace 12,500' and below.
<b>CAUTION</b>	Hydro P-lines 154 AGL unlgtd 9000' E of Thld 26. Ocsl parajump activity within 1.5NM of A/D to 14,000 ASL. Hi ints lgt oprg dusk to dawn fr hotel roof at N49 49 56 W99 57 40 (4.7NM S A/D). Beams projecting upward. Hi ints lgt may create temporary effects to vision.