

---

# FLIGHT PLAN & SITE SURVEY

---

E 171-5355 KITCHENER WATERLOO FLYING DUTCHMEN  
R/C CLUB- RIM PARK INDOOR FIELD

July 10, 2026



**IMPORTANT NOTICE**

Please ensure you have received all required authorizations prior to flight. This Site Survey was created using RPAS Wilco. The user accepts all responsibility for the accuracy of the information.

Terms & Conditions: [rpaswilco.com/#tnc](https://rpaswilco.com/#tnc)

# Mission Information

E 171-5355 KITCHENER WATERLOO FLYING DUTCHMEN R/C CLUB- RIM PARK INDOOR FIELD

## FLIGHT DETAILS

Reference No:	<b>MAAC-171-5355</b>
Project Name:	<b>KITCHENER WATERLOO FLYING DUTCHMEN R/C CLUB</b>
Pilot Name:	<b>MAAC</b>
Pilot Certificate:	
Mission Type:	<b>VLOS</b>
Flight Start:	<b>July 10, 2026 12:56 PM</b>
Flight End:	<b>July 10, 2026 01:56 PM</b>

## LOCATION DETAILS

Flight Address:	<b>RIM PARK INDOOR FIELD</b>
Latitude:	<b>43° 31' 7.62" N ( 43.519 )</b>
Longitude:	<b>80° 30' 8.33" W ( -80.502 )</b>
Field Elevation:	<b>1063 ft MSL</b>
Altitude / Radius:	<b>400 ft / 926 m ( 0.5 nm )</b>
Classification:	<b>UNCONTROLLED</b>
FIR / Contact:	<b>CZYZ / 905-676-4509</b>

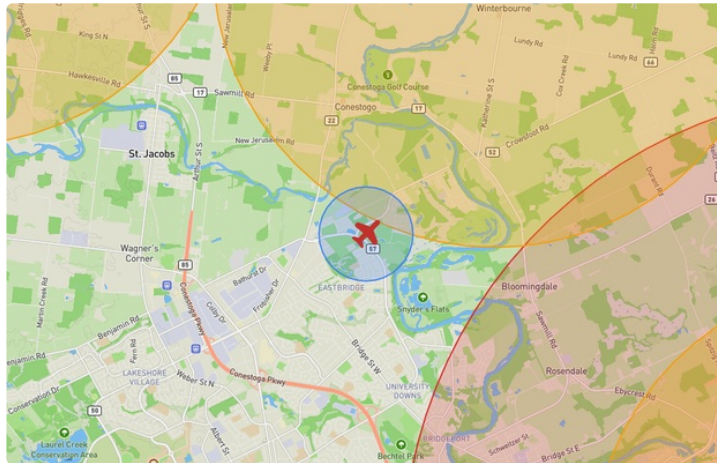
## REPORT CONTENTS

Site Survey • Obstacles (if available) • Nearby Aerodromes • Canadian Aviation Regulations • GFA • Aerodrome Supplements • METAR & TAF • NOTAMs • CFS





# Flight Map & MODEL Details

MISSION LOCATION SURVEY

## FLIGHT AREA MAP



## MISSION LOCATION DETAILS

ROLE	LATITUDE	LONGITUDE
 MODEL	43° 31' 7.62" N 43.519	80° 30' 8.33" W -80.502
 Pilot		
 Payload Op.		
 Observer		

# Airspace Classification

MISSION LOCATION SURVEY

## AIRSPACE MAP



## OVERLYING AIRSPACES

Class	Name	Floor	Ceiling
E	3.4.1-43 [TA]	700AGL	1800MSL
E	Southern Ontario Low Level Control Area a) [CAE]	2500MSL	6500MSL

Planned flight altitude is below the lowest documented airspace layer

## NEAREST AERODROMES & DISTANCE FROM OPERATION

LARGO WOODS FIELD (CLW6 - AERODROME - Reg)	Lat: 43.567	Long: -80.471	5.898KM	3.185NM	NE
<b>Operator:</b> DAVID WOOD: PHONE: 519-500-8629, POST: UNKNOWN <b>FIR Contact:</b> 905-676-4509					
ELMIRA (CNT6 - AERODROME - Reg)	Lat: 43.585	Long: -80.603	10.939KM	5.907NM	NW
<b>Operator:</b> N. KENNEDY: PHONE: 519-501-2904, POST: UNKNOWN <b>FIR Contact:</b> 905-676-4509					
WATERLOO (CYKF - AERODROME - Reg)	Lat: 43.461	Long: -80.379	11.896KM	6.423NM	SE
<b>Operator:</b> REGIONAL MUNI OF WATERLOO: PHONE: 519-648-2256, POST: UNKNOWN <b>FIR Contact:</b> 905-676-4509					

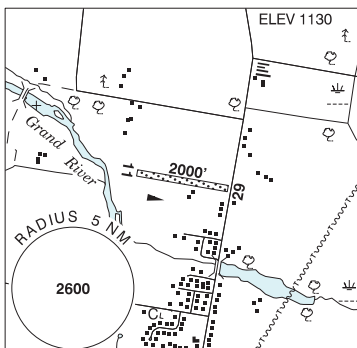
ONTARIO

AERODROME / FACILITY DIRECTORY

**CONESTOGO / LARGO WOODS FIELD ON**

**CLW6**

<b>REF</b>	N43 34 00 W80 28 15 2.1SW 10°W (2022) UTC-5(4) Elev 1130' A1900 A5000
<b>OPR</b>	David Wood 519-500-8629 Reg PPR
<b>PF</b>	B-1 C-2,3 D-4,5,6
<b>FLT PLN</b>	
<b>FIC</b>	London 866-WXBRIEF (Toll free within Canada) or 866-541-4104 (Toll free within Canada & USA)
<b>RWY DATA</b>	Rwy 11/29 2000x35 GRASS
<b>RCR</b>	Opr No win maint. Rwy soft in spring.
<b>COMM</b>	
<b>ATF</b>	tfc 123.2 5NM 4200 ASL



**CAUTION** Marked P-lines aprx 45 AGL on apch to Rwy 29. Trees aprx 25 AGL at Thld 11. Cultivated field both sides of rwy.

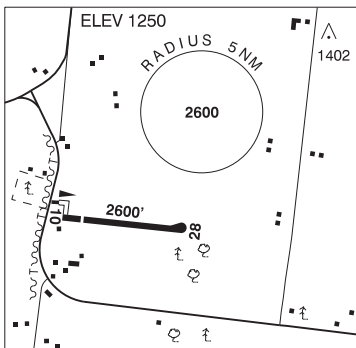
ONTARIO

AERODROME / FACILITY DIRECTORY

ELMIRA ON

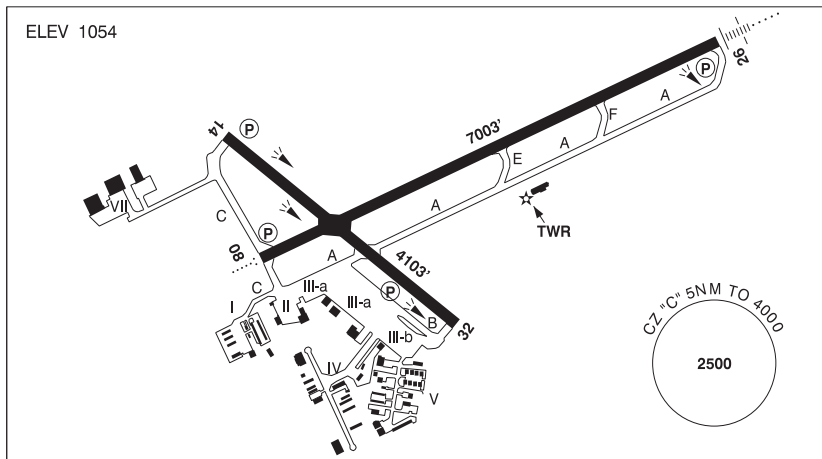
CNT6

<b>REF</b>	N43 35 05 W80 36 11 2SW 10°W UTC-5(4) Elev 1250' VTA A5000
<b>OPR</b>	N. Kennedy 519-501-2904 Reg PPR
<b>PF</b>	C-2 D-3,4,5,6
<b>FLT PLN</b>	<b>FIG</b> London 866-WXBRIEF (Toll free within Canada) or 866-541-4104 (Toll free within Canada & USA)
<b>SERVICES</b>	<b>S</b> 7
<b>RWY DATA</b>	Rwy 10/28 2600x25 ASPH Thld 10 displ 400'. <b>RCR</b> Opr No win maint.
<b>COMM</b>	<b>ATF</b> tfc 123.2 5NM 4300 ASL
<b>CAUTION</b>	P-line aprx 35 AGL 350' fr Thld 10 (poles red/white striped and orange balls on wires). Beyond asphalt paved sfc, a sharp slope to the adj grass area may be present.



**KITCHENER / WATERLOO ON**

**CYKF**



<b>REF</b>	N43 27 39 W80 22 43 1E 10°W UTC-5(4) Elev 1054' VTA A5000 LO6 HI5 CAP OC
<b>OPR</b>	Regional Muni of Waterloo 519-648-2256 H24 Cert Ldg fees are applied to all acft above 2500 Kg max tkof wt
<b>PF</b>	A-1,3,6,7,8 B-2 avbl 13-20Z† Mon-Sat C-4,5
<b>CUST</b>	AOE/15 888-226-7277 Gen Avn only AOE/180 12-04Z† 519-648-3858 2hrs PN
<b>FLT PLN</b>	<p><b>FIC</b> London 866-WXBRIEF (Toll free within Canada) or 866-541-4104 (Toll free within Canada &amp; USA)</p> <p><b>WX</b> METAR AUTO H24 (see COMM) WxCam TAF H24, issue times: 0140, 0740, 1340, 1940Z.</p>
<b>SERVICES</b>	<p><b>FUEL</b> 100LL, JA (FSII avbl), JA-1 (FSII avbl)</p> <p><b>OIL</b> 80, 100</p> <p><b>S</b> 1,2,3,4,5,6</p> <p><b>ARFF</b> DESIGNATED CAT 7 for sked pax flt. CAT 7 for non-sked 45 min PN 519-648-3370. PPR for acft 20 seats and abv, exc for diversions or as an altn.</p> <p><b>JASU</b> Air Start</p> <p><b>PVT ADV</b> Chartright 129.475 905-671-4674 ext 125 1100-0130Z† O/T call out chg. Flite Line svc 130.5 519-514-0530 11-01Z† O/T call out chg. Summit Fuel Services 123.5 519-497-8091 12-02Z† O/T call out chg.</p> <p><b>MIL CON</b> Chartright FBO 800-595-9395</p>

## ONTARIO

## AERODROME / FACILITY DIRECTORY

## KITCHENER / WATERLOO ON (Cont'd)

CYKF

<b>RWY DATA</b>	Rwy 14(138°)/32(318°) 4103x148 ASPH Rwy 08(075°)/26(255°) 7003x148 ASPH Rwy 26 down 0.44% RESA: 08 197'; 26 295'
<b>RWY CERT</b>	Rwy 14/32 AGN IIIA Rwy 08 RVR 1200(1/4sm)/Rwy 26 RVR 1200(1/4sm) AGN IIIB
<b>TWY CERT</b>	Twy B AGN IIIA
<b>APRON</b>	Apron I max wingspan 50'. Apron II max wingspan 55'. Turbine acft PPR. Apron IIIA tml apron for air carriers only. Max wingspan 118', larger acft PPR. Apron IIIB GA freight max wingspan 118', larger acft PPR. Apron IV max wingspan 118'. Apron V max wingspan 79'. Apron VII max wingspan 170'.
<b>RCR</b>	Aprt Ops 519-648-3370 CRFI/RSC avbl H24. PCN
<b>LIGHTING</b>	08-AO(TE HI) P2, 14-(TE HI) P1, 26-AN(TE HI) P2, 32-(TE HI) P1 ARCAL-126.0 type K when twr clsd. PAPI Rwy 14, 32 and 26 not avbl on ARCAL, on continuously: low ints at SS minus 30 min to SR minus 30 min, high ints at SR minus 30 min to SS minus 30 min.
<b>COMM</b>	<p><b>ATIS</b> 125.1 12-04Z‡</p> <p><b>GND</b> Waterloo 121.8 12-04Z‡</p> <p><b>TWR</b> Waterloo 126.0 118.55 (V) 12-04Z‡ (emerg only 519-648-3055)</p> <p><b>MF</b> 126.0 04-12Z‡ 5NM 4000 ASL (CAR 602.98)</p> <p><b>ARR</b> Toronto Tml 128.275</p> <p><b>DEP</b> Toronto Tml 128.275</p> <p><b>PAL</b> Toronto Ctr 128.275</p> <p><b>AWOS</b> 125.1 04-12Z‡</p>
<b>NAV</b>	<p><b>DME</b> WATERLOO YWT 115.0 Ch 97 N43 27 31 W80 22 46 (1047')</p> <p><b>ILS</b> IKF 110.7 (Rwy 26)</p>
<b>PRO</b>	<p>Pursuant to CAR 602.105, the following procedures are in effect. Noise Abatement pro in effect for all acft. See CAP or VTPC. Pilots flying an inst apch pro to Rwy 26 take note: The pro turn overflies Guelph Aprt (circuit hgt 2100 ASL). Pilots flying an inst apch pro to Rwy 26 can anticipate delays and/or restrictions when Rwy 05 &amp; 06R are in use at Toronto/Lester B. Pearson. IFR tng flts are to ctc National Traffic Management Unit (FLOW CTL) 800-268-4831 2 hrs prior to ETD or possible delays. VFR tfc outside CZ watch for apch acft oprg in vic of extended Rwy 26 centreline. VFR dep avoid noise sensitive areas at an operationally safe alt.</p> <p>Pursuant to CAR 602.105, the following procedures are in effect. Rgt hand circuits Rwy 32 (CAR 602.96).</p> <p>No VFR or IFR tng on Rwy 08 btwn 02-12Z‡</p> <p><b>REDUCED VISIBILITY OPERATING PROCEDURES (RVOP):</b> One acft permitted on manoeuvring area at a time dur RVOP. RVOP avbl 12-04Z‡ only. For VFR ARR/DEP rtes see Kitchener/Waterloo VTPC.</p>
<b>CAUTION</b>	Winch-launched hang gliders, cable to 2000 AGL N43 33 18 W080 31 31 near St. Jacobs aprx 8.5NM NW of A/D.