
FLIGHT PLAN & SITE SURVEY

H 454-4427 OAKALLA HAWKS RC GLIDER CLUB- DEER
LAKE PARK

July 10, 2026



IMPORTANT NOTICE

Please ensure you have received all required authorizations prior to flight. This Site Survey was created using RPAS Wilco. The user accepts all responsibility for the accuracy of the information.

Terms & Conditions: rpaswilco.com/#tnc

Mission Information

H 454-4427 OAKALLA HAWKS RC GLIDER CLUB- DEER LAKE PARK

FLIGHT DETAILS

Reference No:	MAAC-454-4427
Project Name:	OAKALLA HAWKS RC GLIDER CLUB
Pilot Name:	MAAC
Pilot Certificate:	
Mission Type:	VLOS
Flight Start:	July 10, 2026 09:56 AM
Flight End:	July 10, 2026 10:56 AM

LOCATION DETAILS

Flight Address:	DEER LAKE PARK
Latitude:	49° 14' 10.94" N (49.236)
Longitude:	122° 59' 1.31" W (-122.984)
Field Elevation:	72 ft MSL
Altitude / Radius:	400 ft / 926 m (0.5 nm)
Classification:	UNCONTROLLED
FIR / Contact:	CZVR / 604-586-4500

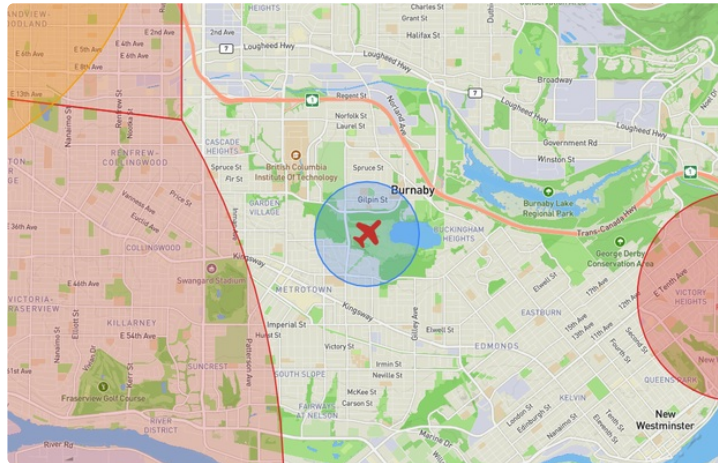
REPORT CONTENTS

Site Survey • Obstacles (if available) • Nearby Aerodromes • Canadian Aviation Regulations • GFA • Aerodrome Supplements • METAR & TAF • NOTAMs • CFS





Flight Map & MODEL Details

MISSION LOCATION SURVEY

FLIGHT AREA MAP



MISSION LOCATION DETAILS

ROLE	LATITUDE	LONGITUDE
 MODEL	49° 14' 10.94" N 49.236	122° 59' 1.31" W -122.984
 Pilot		
 Payload Op.		
 Observer		

Airspace Classification

MISSION LOCATION SURVEY

AIRSPACE MAP



OVERLYING AIRSPACES

Class	Name	Floor	Ceiling
E	3.1.1-9 [TA]	700AGL	1800MSL
C	Vancouver, BC c) [TCA]	1200MSL	2500MSL

Planned flight altitude is below the lowest documented airspace layer

NEAREST AERODROMES & DISTANCE FROM OPERATION

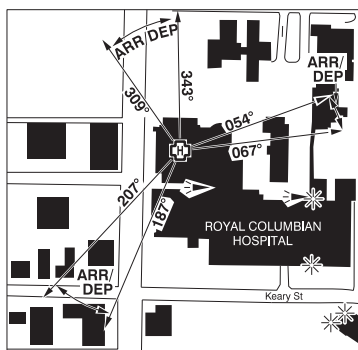
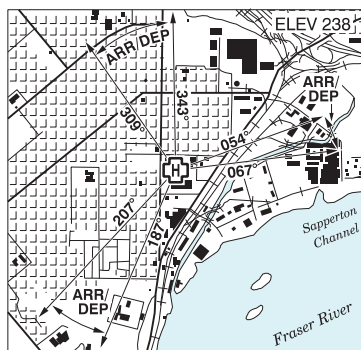
NEW WESTMINSTER (ROYAL COLUMBIAN HOSPITAL) (CNW9 - HELIPORT - Cert)	Lat: 49.226	Long: -122.892	6.734KM	3.636NM	E
Operator: FRASER HEALTH AUTHORITY: PHONE: 604-677-3672, POST: UNKNOWN FIR Contact: 604-586-4500					
VANCOUVER HARBOUR (CYHC - WATERDROME - Reg)	Lat: 49.294	Long: -123.111	11.294KM	6.098NM	NW
Operator: HARBOUR AIR, (VHFC): PHONE: 1-800-665-0212, PHONE: 604-328-4340, PHONE: 604-647-7570, POST: UNKNOWN FIR Contact: 604-586-4500					
VANCOUVER (CHILDREN AND WOMEN'S CENTRE) (CAK7 - HELIPORT - Cert)	Lat: 49.244	Long: -123.127	10.431KM	5.632NM	W
Operator: PROVINCIAL HEALTH SERVICES AUTHORITY: FAX: 604-297-9307, PHONE: 604-677-3672, PHONE: 888-449-4857 (cell), POST: UNKNOWN FIR Contact: 604-586-4500					

BRITISH COLUMBIA

AERODROME / FACILITY DIRECTORY

VANCOUVER / NEW WESTMINSTER (ROYAL COLUMBIAN HOSP) BC (Heli)

CNW9



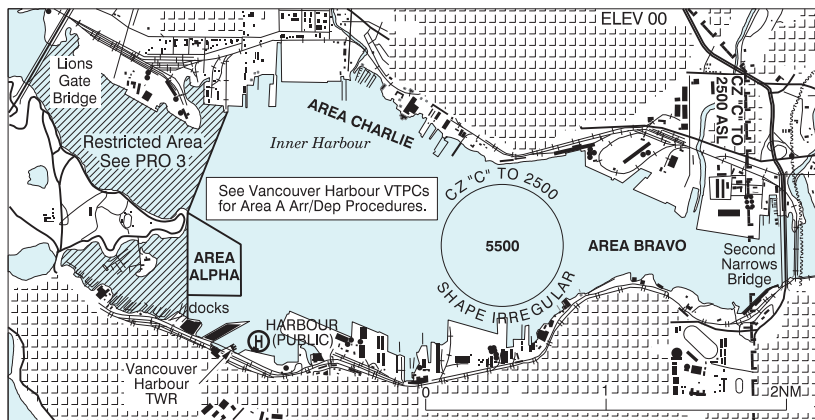
REF	N49 13 36 W122 53 32 16°E (2017) UTC-8(7) Elev 238' VTA
OPR	Fraser Health Authority 604-677-3672 Cert PPR
PF	B-1,2,4 C-3,5,6
FLT PLN	
FIG	Kamloops 866-WXBRIEF (Toll free within Canada) or 866-541-4101 (Toll free within Canada & USA)
HELI DATA	FATO 86' dia non-supporting TLOF 65' x 65' CONC Safety Area 115' dia 17,000 lbs Max heli overall length 57.4' (CAR 602.96)
RCR	Opr
LIGHTING	RY(ME) green RF(FH)
COMM	
ATIS	Vancouver Airport 124.6
TWR	Vancouver Outer 124.02
A/G	Hosp Security 158.76 FM 3 min PN
PRO	Arr/Dep 054° to 067° fr heli, (H1), day/night use (CAR 602.96). Arr/dep 187° to 207° fr heli, (H1), day/night use (CAR 602.96). Arr/dep 309° to 343° fr heli, (H1), day/night use (CAR 602.96).
CAUTION	Rooftop structures aprx 112' S of heli. Trees aprx 623' W fr heli. Bldgs aprx 289' NNE and 1148' SSE fr heli.

BRITISH COLUMBIA

AERODROME / FACILITY DIRECTORY

VANCOUVER HARBOUR BC (water aerodrome)

CYHC



REF	N49 17 40 W123 06 41 Adj N 17°E (2013) UTC-8(7) Elev 00' VTA A5004 LO1 T1
OPR	Harbour Air 1-800-665-0212 Reg PN Vancouver Harbour Flight Centre (VHFC) 604-647-7570 or 604-328-4340 PN
PF	B-1,2 C-3,4,5,6
CUST	AOE/15 888-226-7277
FLT PLN	<p>FIG Kamloops 866-WXBRIEF (Toll free within Canada) or 866-541-4101 (Toll free within Canada & USA)</p> <p>ACC 604-775-9601/9606/9674</p> <p>WX LWIS H24 LAWO 15-02Z± or til 1/2 hr after SS, whichever is later.</p>
SERVICES	<p>FUEL 100, JB, (100LL, JA, JA-1 avbl thru VHFC) PN</p> <p>OIL 100</p> <p>S 5</p>
COMM	<p>RCO Pacific rdo 123.15 (FISE)</p> <p>ATIS Vancouver Harbour 126.8 dur twr hrs of ops.</p> <p>CLNC DEL Vancouver Harbour 125.35 all dep acct ctc clnc del only if instructed to do so on ATIS</p> <p>TWR Vancouver Harbour 118.4 (V) 15-02Z± or til half hour after SS, whichever is later. (emerg only 604-688-9254)</p> <p>ATF tfc 118.4 when twr clsd within Vancouver Harbour CZ shape irregular 2500 ASL</p> <p>TML 125.2</p>

BRITISH COLUMBIA

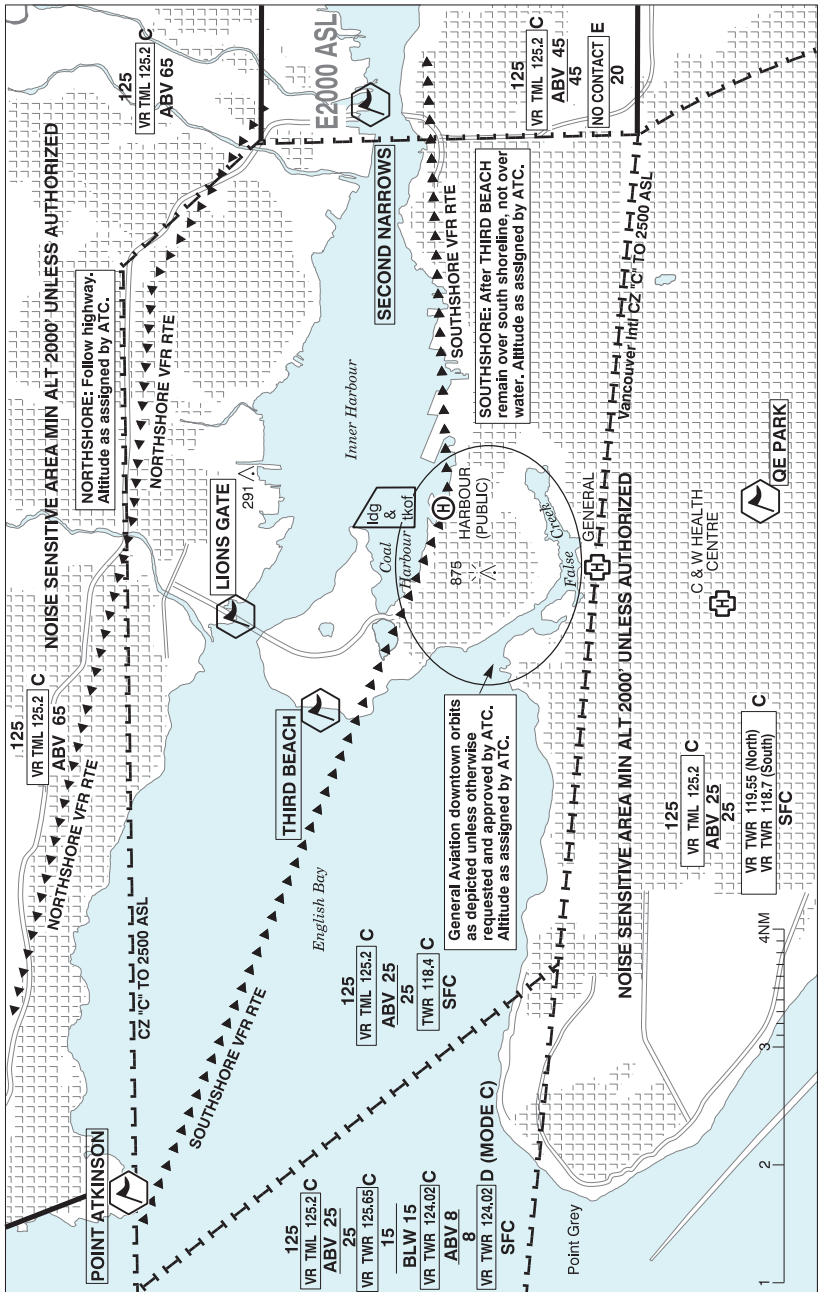
AERODROME / FACILITY DIRECTORY

VANCOUVER HARBOUR BC (water aerodrome) (Cont'd)

CYHC

NAV	VOR/DME YVR 115.9 Ch 106 N49 04 38 W123 08 57 (37')
PRO	<p>General Aviation: Refer to Vancouver Harbour VTPCs. Commercial Aviation:</p> <ol style="list-style-type: none"> 1. Listen to ATIS for direction of arr/dep and refer to the VTPCs for typical configurations (westbound, eastbound, southeastbound) and arr/dep pro for Area A as well as scenic tours over downtown Vancouver. ATC instructions override depicted procedures. 2. Arr/dep after 0700 hrs incl. Noise sensitive areas adj to Area A. 3. Acft ops normally ltd to Area A. SW corner of Area A marked by orange buoy. No acft shall land, tkof or step taxi within rstd areas including First Narrows (Lions Gate) and False Creek. Coordinate with ATC before proceeding into Area A. Report ready for tkof when ready to apply power. 4. Pilots are requested, while observing safe oprg procedures, to maintain arr/dep profiles that avoid low flt and high power settings over Stanley Park. 5. See Vancouver VTA for VFR low lvl transit routes beyond CYHC CZ. 6. Commercial scenic tours in Howe Sound: avoid turning back towards YHC CZ South of Eagle Harbour and plan to return to YHC CZ 2,000' or ctc ATC early for conflicts with outbound tfc. <p>ATS REQUIREMENTS: All VFR acft arriving, departing or transiting the Vancouver or Victoria Tower Class C or D airspace require a transponder code. - All acft departing Vancouver or Victoria Intl (including Water Aerodrome) call Kamloops FIC at 866-541-4101 for code assignment at least 30 min prior to flight or file a VFR Flight Plan/Flight Itinerary. - All acft arriving Vancouver, Victoria Intl (including Water Aerodrome) or transiting Vancouver or Victoria Control Zones obtain a code from one of the following ATS units: Vancouver Harbour, Nanaimo, Victoria Harbour, Boundary Bay, Langley, Abbotsford or Pitt Meadows or call Kamloops FIC at 866-541-4101. -All acft arriving Victoria Intl from a non NAV CANADA site call Kamloops FIC at 866-541-4101 for code assignment at least 30 minutes prior to flight or file a VFR Flight Plan/ Flight Itinerary.</p>

VANCOUVER HARBOUR VFR TERMINAL PROCEDURES CHART



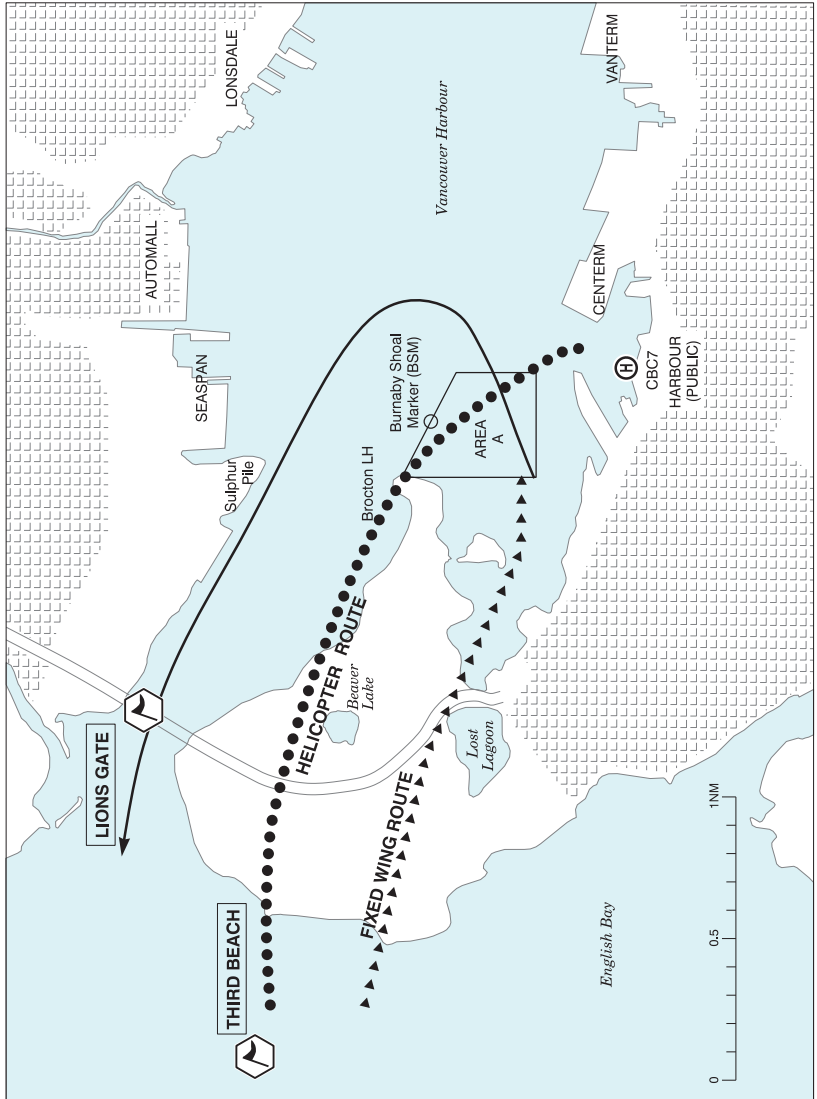
BRITISH COLUMBIA

AERODROME / FACILITY DIRECTORY

VANCOUVER HARBOUR VFR TERMINAL PROCEDURES CHART (Cont'd)

NAME	IDENT	LAT/LONG
LIONS GATE	VCLSG	N49° 18' 54" W123° 08' 18"
POINT ATKINSON	VCATK	N49° 19' 48" W123° 15' 54"
QE PARK	VCQEP	N49° 14' 18" W123° 07' 24"
SECOND NARROWS	VCSEC	N49° 17' 42" W123° 01' 36"
THIRD BEACH	VCIII	N49° 18' 30" W123° 10' 12"

VANCOUVER HARBOUR VFR TERMINAL PROCEDURES CHART - EASTBOUNDS



NAME	IDENT	LAT/LONG
LIONS GATE	VCLSG	N49° 18' 54" W123° 08' 18"
THIRD BEACH	VCIII	N49° 18' 30" W123° 10' 12"

VANCOUVER HARBOUR VFR TERMINAL PROCEDURES CHART - EASTBOUNDS

ARRIVALS

From Third Beach, remain S or over Stanley Park Causeway until past Lost Lagoon.

CAUTION: See NOTAMs regarding long-term crane between Lost Lagoon and Beaver Lake.

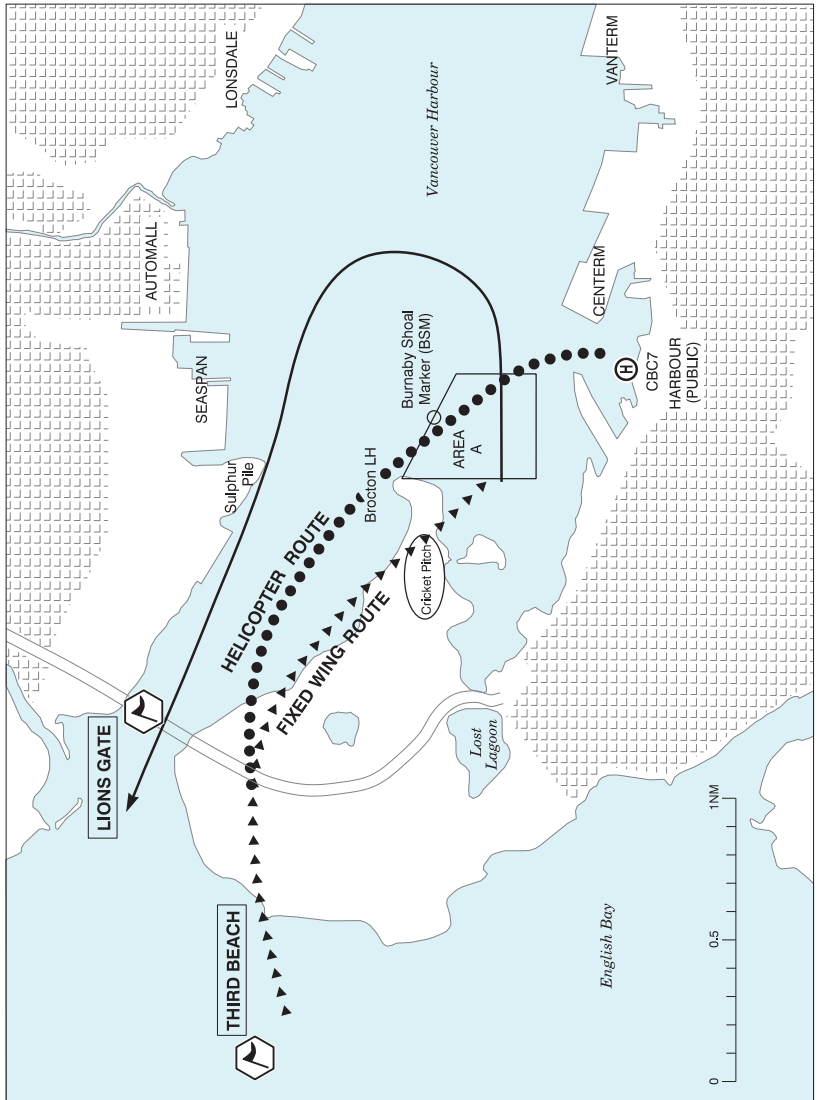
CBC7: Apch via N end of Third Beach and Brocton, expect instructions to remain N and behind tfc ldg on water.

DEPARTURES

Dep NE and turn for Lions Gate Bridge, turn may be controlled by ATC. Join published outbound rte at Lions Gate at 1000 unless otherwise cleared by ATC.

CBC7: Dep CBC7 NNE and join dep path. Then join published outbound rte at Lions Gate unless otherwise cleared by ATC.

VANCOUVER HARBOUR VFR TERMINAL PROCEDURES CHART - SOUTHEASTBOUNDS



NAME	IDENT	LAT/LONG
LIONS GATE	VCLSG	N49° 18' 54" W123° 08' 18"
THIRD BEACH	VCIII	N49° 18' 30" W123° 10' 12"

**VANCOUVER HARBOUR VFR TERMINAL PROCEDURES CHART -
SOUTHEASTBOUNDS (Cont'd)**

ARRIVALS

From Third Beach fly base and final to apch over Cricket Pitch.

CBC7: Apch via Brocton/BSM.

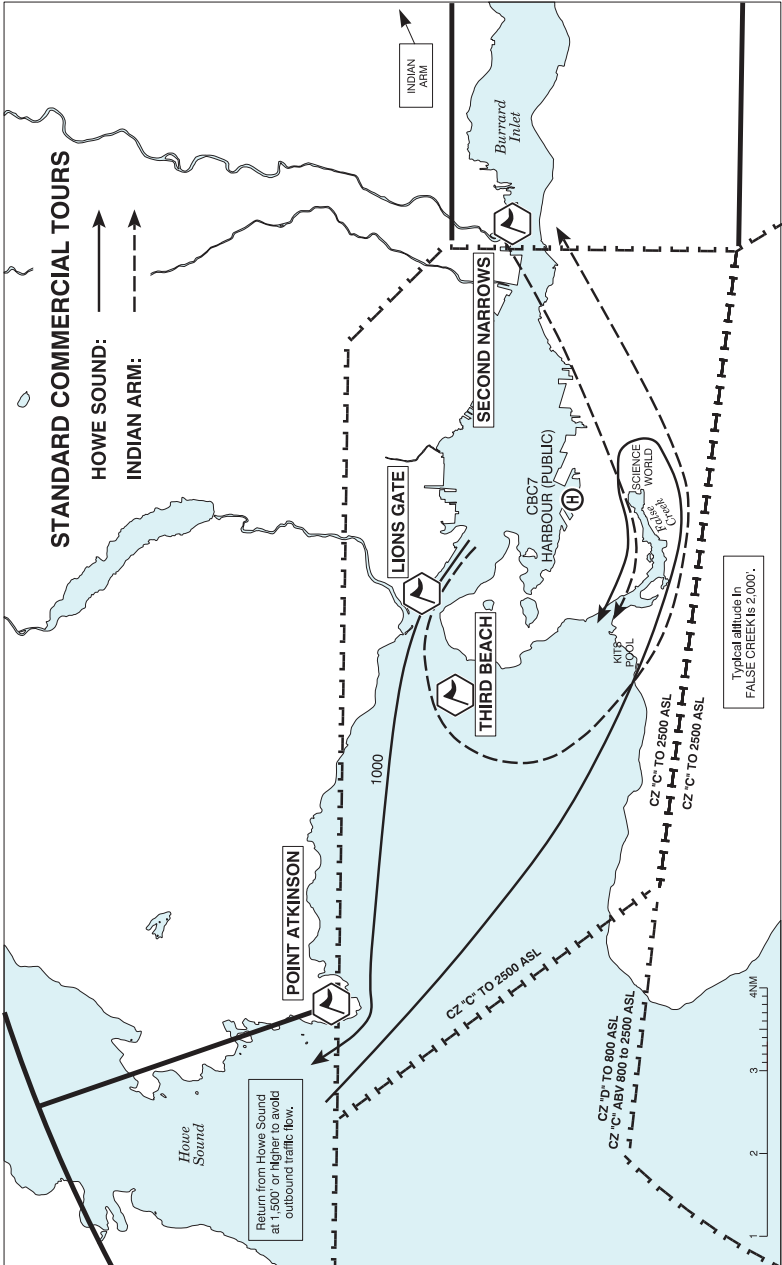
DEPARTURES

Inquire with ATC before taxiing N of "the ball". Remain S of Chevron Barge unless otherwise coordinated with ATC.

Dep E and turn for Lions Gate Bridge, turn may be controlled by ATC. Join published outbound rte at Lions Gate at 1000 ASL unless otherwise cleared by ATC.

CBC7: Dep CBC7 NNE and join dep path then join published outbound rte at Lions Gate at 1000 ASL unless otherwise cleared by ATC.

VANCOUVER HARBOUR VFR TERMINAL PROCEDURES CHART - STANDARD COMMERCIAL TOURS



BRITISH COLUMBIA

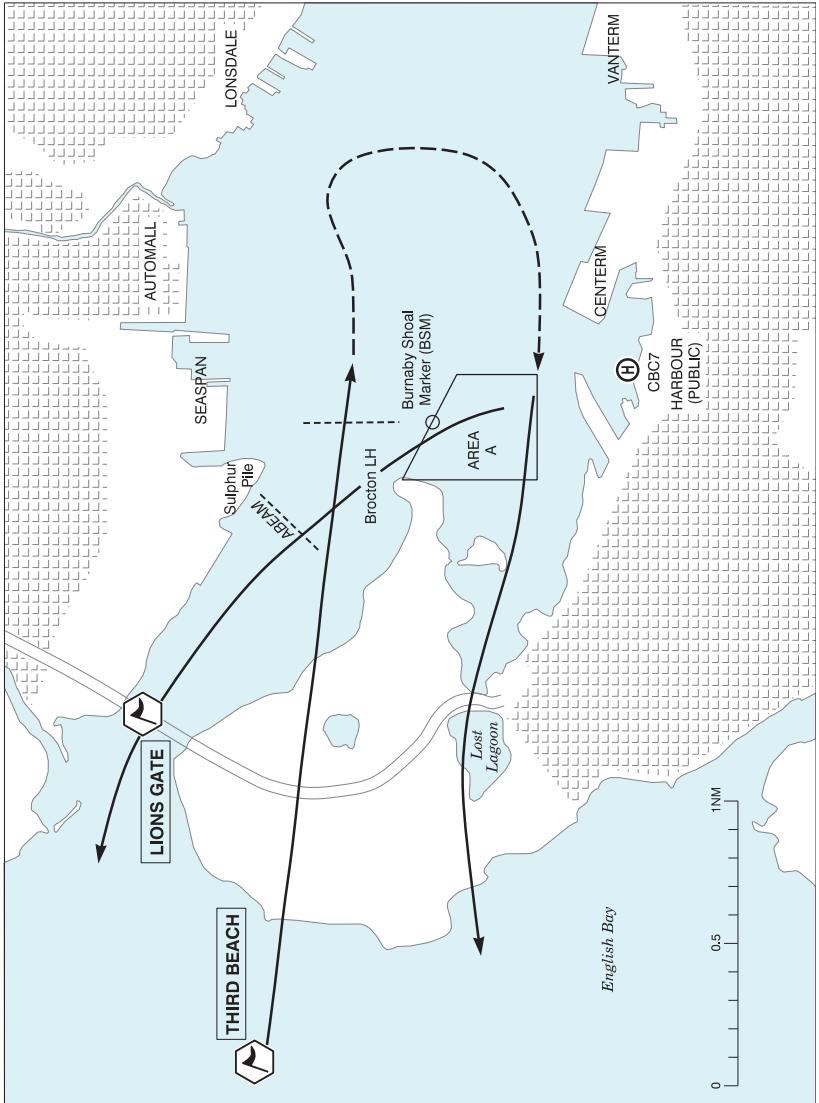
AERODROME / FACILITY DIRECTORY

**VANCOUVER HARBOUR VFR TERMINAL PROCEDURES CHART - STANDARD
COMMERCIAL TOURS (Cont'd)**

NAME	IDENT	LAT/LONG
LIONS GATE	VCLSG	N49° 18' 54" W123° 08' 18"
POINT ATKINSON	VCATK	N49° 19' 48" W123° 15' 54"
SECOND NARROWS	VCSEC	N49° 17' 42" W123° 01' 36"
THIRD BEACH	VCIII	N49° 18' 30" W123° 10' 12"

1. Listen to ATIS for assigned standard tour rte:
HOWE SOUND:
INDIAN ARM:
2. Default tour rte is HOWE SOUND. Fly assigned standard tour. Rte modifications for wx or special requests provided on workload, tfc and conditions permitting basis.
3. On initial ctc, inform ATC of intentions to fly standard tour.
4. Follow rte as depicted. ATC will provide additional instructions when required.

VANCOUVER HARBOUR VFR TERMINAL PROCEDURES CHART - WESTBOUNDS



NAME	IDENT	LAT/LONG
LIONS GATE	VCLSG	N49° 18' 54" W123° 08' 18"
THIRD BEACH	VCIII	N49° 18' 30" W123° 10' 12"

VANCOUVER HARBOUR VFR TERMINAL PROCEDURES CHART - WESTBOUNDS**ARRIVALS**

Fly downwind as depicted, 1000 ASL or BLW or as assigned. Expect alt restriction E/W of BSM. E of BSM may widen out for base turn or as instructed by ATC.

CBC7: Follow ARRIVALS pro.

DEPARTURES

NW: Pass W of BSM, expect alt restriction passing abeam Sulphur Pile. Join published outbound rte at Lions Gate at 1000 ASL unless otherwise cleared by ATC.

W: Inform ATC of intentions to dep W, expect ATC instructions for joining outbound rte.

Caution: Strong turbulence over Stanley Park.

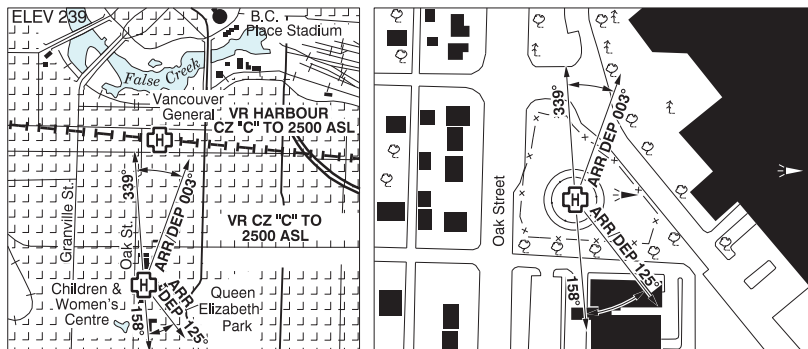
CBC7: Follow **NW** pro in all conditions ensuring fit path W of BSM.

BRITISH COLUMBIA

AERODROME / FACILITY DIRECTORY

VANCOUVER (CHILDREN & WOMEN'S HEALTH CENTRE) BC (Heli)

CAK7



REF	N49 14 38 W123 07 38 17°E (2014) UTC-8(7) Elev 239' VTA A5004
OPR	Provincial Health Services Authority 604-677-3672 Cert NVIS OPS AUTH PPR
PF	B-1,2,4 C-3,5,6
FLT PLN	
FIC	Kamloops 866-WXBRIEF (Toll free within Canada) or 866-541-4101 (Toll free within Canada & USA)
HELI DATA	FATO 86' dia GRASS TLOF 45' dia CONC Safety Area 115' dia Max heli overall length 57' (CAR 602.96)
LIGHTING	RW(ME) green LED PN ARCAL-122.8 type K PN
COMM	
ATIS	Vancouver 124.6
TWR	Vancouver 124.02
A/G	Hosp Security 158.76 FM 3 min PN
PRO	Arr/dep 125° to 158° (H1), day/night use (CAR 602.96). Arr/dep 339° to 003° (H1), day/night use (CAR 602.96). Noise sensitive area, use noise abatement profile for act type. Transponder mode C rqr'd in CZ & tml class "C" airspace.
CAUTION	Numerous unlit trees all quads. Numerous cranes within 800' of heli max 549' ASL.

VANCOUVER VFR TERMINAL PROCEDURES CHART

