
FLIGHT PLAN & SITE SURVEY

N 526-4514 CLUB DE VOL A VOILE DE LA MONTERGIE
(C2VM)- 1 - SAINTE-JULIE GAZONNIERE (TERRAIN
PRINCIPAL)

July 10, 2026



IMPORTANT NOTICE

Please ensure you have received all required authorizations prior to flight. This Site Survey was created using RPAS Wilco. The user accepts all responsibility for the accuracy of the information.

Terms & Conditions: rpaswilco.com/#tnc

Mission Information

N 526-4514 CLUB DE VOL A VOILE DE LA MONTERGIE (C2VM)- 1 - SAINTE-JULIE GAZONNIERE (TERRAIN PRINCIPAL)

FLIGHT DETAILS

Reference No:	MAAC-526-4514
Project Name:	CLUB DE VOL A VOILE DE LA MONTERGIE (C2VM)
Pilot Name:	MAAC
Pilot Certificate:	
Mission Type:	VLOS
Flight Start:	July 10, 2026 12:57 PM
Flight End:	July 10, 2026 01:57 PM

LOCATION DETAILS

Flight Address:	1 - SAINTE-JULIE GAZONNIERE (TERRAIN PRINCIPAL)
Latitude:	45° 37' 13.80" N (45.62)
Longitude:	73° 20' 5.30" W (-73.335)
Field Elevation:	128 ft MSL
Altitude / Radius:	400 ft / 926 m (0.5 nm)
Classification:	CONTROLLED
FIR / Contact:	CZUL / 514-633-3365

NOTES

Your flight is in controlled airspace.
If your RPAS is > 250g, please obtain RPAS Flight Authorization using the NavDrone app or by contacting NavCanada. (CARs 901.71)

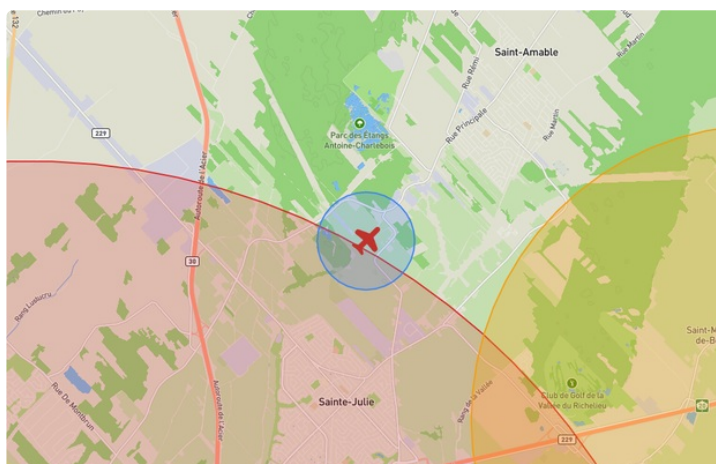
REPORT CONTENTS

Site Survey • Obstacles (if available) • Nearby Aerodromes • Canadian Aviation Regulations • GFA • Aerodrome Supplements • METAR & TAF • NOTAMS • CFS





Flight Map & MODEL Details

MISSION LOCATION SURVEY

FLIGHT AREA MAP



MISSION LOCATION DETAILS

ROLE	LATITUDE	LONGITUDE
 MODEL	45° 37' 13.80" N 45.62	73° 20' 5.30" W -73.335
 Pilot		
 Payload Op.		
 Observer		

Airspace Classification

MISSION LOCATION SURVEY

AIRSPACE MAP



OVERLYING AIRSPACES

Class	Name	Floor	Ceiling
C	St-Hubert, QC [CZ]	SFC	2000MSL
E	St-Jean, QC [TA]	700AGL	18000MSL

NEAREST AERODROMES & DISTANCE FROM OPERATION

ST-MATHIEU-DE-BELOEIL (GILLES BEAUDET) (CSB3 - AERODROME - Reg)	Lat: 45.59	Long: -73.238	8.275KM	4.468NM	SE
Operator: MUNICIPALITE DE SAINT-MATHIEU-DE-BELOEIL: PHONE: 450-446-5931, POST: UNKNOWN FIR Contact: 514-633-3365					
MET (AEROPORT METROPOLITAIN DE MONTREAL) (CYHU - AERODROME - Cert)	Lat: 45.518	Long: -73.417	13.063KM	7.053NM	SW
Operator: MET (AEROPORT METROPOLITAIN DE MONTREAL): PHONE: 450-678-6030, POST: UNKNOWN FIR Contact: 514-633-3365					
ST-MATHIAS (CSV9 - WATERDROME - Reg)	Lat: 45.503	Long: -73.252	14.584KM	7.875NM	SE
Operator: AVIATION B.L. INCORPORATED: FAX: 450-658-3982, PHONE: 450-658-2041, POST: 600 CHEMIN DES PATRIOTES, ST-MATHIAS, QUE,POSTAL C FIR Contact: 514-633-3365					

QUEBEC

AERODROME / FACILITY DIRECTORY

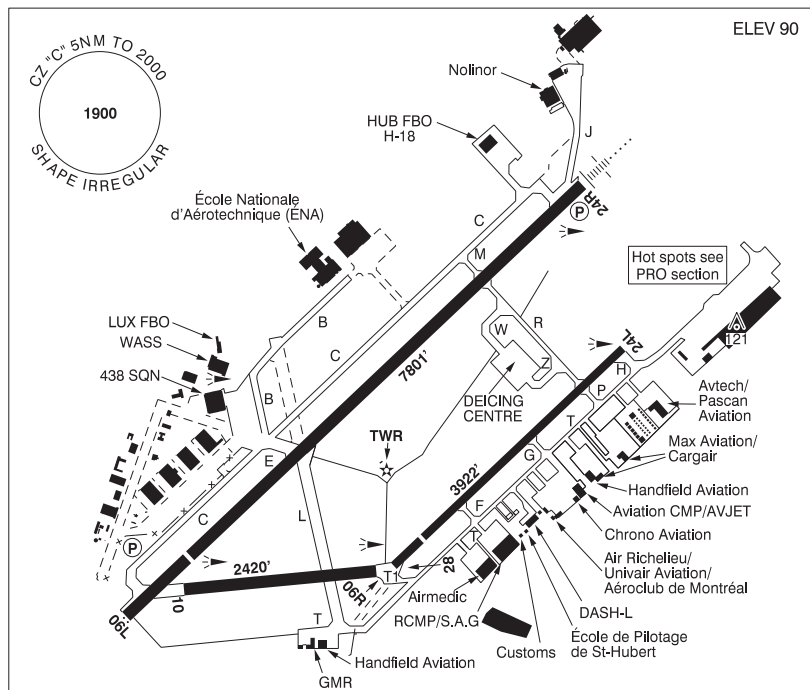
ST-MATHIEU-DE-BELOEIL (GILLES BEAUDET) QC

CSB3

REF	N45 35 25 W73 14 17 1.5NW 15°W (2014) UTC-5(4) Elev 49' VTA A5002	
OPR	Municipalité de Saint-Mathieu-de-Beloil 450-446-5931 Reg Ldg fees	
PF	B-7,8 C-3,4,5	
FLT PLN	(bil)	
FIC	Québec 866-GOMÉTÉO or 866-WXBRIEF (Toll free within Canada) or 866-541-4105 (Toll free within Canada & USA)	
ACC	Montréal 514-633-3211 or 800-633-1353, all Flt Plns, IFR tng PPR. Flt Plns by Fax at 514-633-2877 & include phone numbers where pilot can be reached prior to dep. IFR clearance or activation 514-633-3014.	
SERVICES		
FUEL	100LL (Corp. Aéroport SMB. Members only.) For visitors PPR Mon-Fri, ltd hrs	
OIL	All	
S	1,2,3,4,5	
PVT ADV	Aviamax 450-446-2570; Helico SB3 450-536-0880; Vortex Aviation 450-446-7400	
RWY DATA	Rwy 15(150°)/33(330°) 2581x50 ASPH Thld 15 displ 203' Thld 33 displ 178'	
RCR	Opr Ltd win maint	
LIGHTING	15-(TE ME), 33-(TE ME) ARCAL-122.7 type K	
COMM	(bil)	
ATF	tfc 122.7 5NM outside CYHU CZ 2000 ASL	
PRO	Circuits: All circuits not to exceed 1000 ASL. Touch/go for helicopters are not auth on Rwy 15. Touch/go for all aircraft are not auth btwn 03-13Z‡ Circuit Rwy 33: Climb on rwy centreline to 1000 ASL before turning for circuits or BPOC. Airspace: CYA 627(S) aprx 12NM NE of A/D up to 3000 ASL, cont daylight. Training areas: See Montréal Terminal VTPC. Broadcast ground position and movement intentions. Pilots are requested to avoid flight below 2000 AGL when flying over the Mont-Saint-Hilaire Migratory Bird Sanctuary (Saint-Hilaire, QC N45 33 00 W73 09 00).	
CAUTION	Twy B easily confused with Rwy 15/33. Possible win maint eqpt on rwy. CYHU instrument apch: Acft flying at Montréal/Met (Aéroport Métropolitain de Montréal) aprt (9NM WSW of Beloelil A/D Rwy 24R instrument apch may overfly Beloelil A/D at 2100 ASL.) Circuits: Rwy 15 tfc ptn, twr less than 1NM NE of A/D, 331 ASL. Rwy 33 tfc ptn, twr at 1NM SSW of A/D, 240 ASL.	

MONTRÉAL / MET (AÉROPORT MÉTROPOLITAIN DE MONTRÉAL) QC

CYHU



REF	N45 31 05 W73 25 01 3E 15°W (2010) UTC-5(4) Elev 90' VTA A5002 LO6 LO7 LO8 HI5 T2 CAP
OPR	MET (Aéroport métropolitain de Montréal) 450-678-6030 Cert Ldg fees
PF	B-1,2,3,6 C-4,5
CUST	AOE/15 888-226-7277 1330-0300Z± Mon-Fri exc hols
FLT PLN	(bil) FIG Québec 866-GOMÉTÉO or 866-WXBRIEF (Toll free within Canada) or 866-541-4105 (Toll free within Canada & USA) ACC Montréal 514-633-3211 or 800-633-1353. All Fit Plns, IFR tng fits PPR. Fit Plns by Fax at 514-633-2877 & include phone numbers where pilot can be reached prior to dep. WX METAR AUTO H24 (see COMM) TAF H24, issue times: 00, 06, 12, 18Z. WxCam

QUEBEC

AERODROME / FACILITY DIRECTORY

MONTRÉAL / MET (AÉROPORT MÉTROPOLITAIN DE MONTRÉAL) QC (Cont'd) CYHU

SERVICES

FUEL	100LL, JA-1 (FSII avbl), JP-4 F-34
OIL	All (Mil 123, 128, 133, 148, 156)
S	1 (ltd), 2,4,5,7
SUP FL	D & A-Ice, LHOX 13-21Z† Tue-Fri exc hols
JASU	Mil CE15, 16, CA2
MIL ADV	438 Sqn Ops - Call "WILDCAT OPS" 322.1 135.9 450-462-8777 ext 7216 CSN 472-7216 13-21Z† Mon-Fri. Ltd trans svcg. 24 hrs PN.
PVT ADV	AvJet Distribution 123.025 450-678-4440; Pascan 131.17 888-313-8777, 450-443-0500; HUB FBO H-18 122.8 450-468-4400; LUX FBO 122.470 514-312-1885
MIL CON	Avjet Holding Inc 450-678-4440

RWY DATA

Rwy 06L(062°)/24R(242°) 7801x150 ASPH Thld 06L displ 1105'.
 Rwy 06R(062°)/24L(242°) 3922x100 ASPH Thld 06R displ 463'.
 Rwy 10(100°)/28(280°) 2420x150 ASPH

RWY CERT

Rwy 06L/24R AGN IIIB
 Rwy 06R/24L AGN IIIA
 Rwy 10/28 AGN II

TWY CERT

Twy: F, G, H, J, K AGN IIIA
 Twy: P, T, T1, W, Z AGN IIIB

TWY

Twy B: First 500' fm ENA uncontrolled.

RCR

Opr 1200-2030Z† Mon-Fri Apr 21-Nov 19; 0330-2030Z† Mon-Fri Nov 20-Apr 20, AMSCR/CRFI O/T 1hr PN 514-214-8573, win maint O/T 3hrs PN 514-214-8573, call out chg. Rwy 06R/24L clsd 0400-1045Z† Mon-Fri, 0100-1045Z† Sat-Sun Nov 20-Apr 15; avbl as twy btwn Twy P and Twy R. PCN.

MIL

S50, T75, ST140, TT198.

LIGHTING

06R-(TE ME), 24L-(TE ME), 06L-AS(TE HI) P2, 24R-AN(TE HI) P2, 10-(TE HI), 28-(TE HI) ARCAL-118.4 type K for Rwy 06L/24R, PAPI & twy lgt B, C, E, J, K, M, P, R, T

COMM

(bil)

RCO

Rouyn rdo 118.4 (RAAS) 0500-1045Z† Tue-Sat, 0300-1045Z† Sun-Mon Apr-Oct; 0400-1045Z† Tue-Sat, 0100-1045Z† Sun-Mon Nov-Mar

ATIS

(English) 124.9 (French) 124.1 1045-0500Z† Mon-Fri, 1045-0300Z† Sat-Sun Apr-Oct; 1045-0400Z† Mon-Fri, 1045-0100Z† Sat-Sun Nov-Mar

GND

St-Hubert 126.4 1045-0500Z† Mon-Fri, 1045-0300Z† Sat-Sun Apr-Oct; 1045-0400Z† Mon-Fri, 1045-0100Z† Sat-Sun Nov-Mar

TWR

St-Hubert 118.4 (VFR ARR North) 121.3 (VFR ARR South and East) (V) 1045-0500Z† Mon-Fri, 1045-0300Z† Sat-Sun Apr-Oct; 1045-0400Z† Mon-Fri, 1045-0100Z† Sat-Sun Nov-Mar (emerg only 450-926-6458)

MF

Rouyn rdo 118.4 0500-1045Z† Tue-Sat, 0300-1045Z† Sun-Mon Apr-Oct; 0400-1045Z† Tue-Sat, 0100-1045Z† Sun-Mon Nov-Mar 5NM shape irregular 2000 ASL (CAR 602.98)

ARR

Montréal 125.15 268.3

DEP

Montréal 125.15 268.3

VFR ADV

Montreal Tml 125.15

MIL

438 Sqn Ops 322.1 135.9

AWOS

124.9 (English) 124.1 (French) 0500-1045Z† Tue-Sat, 0300-1045Z† Sun-Mon Apr-Oct; 0400-1045Z† Tue-Sat, 0100-1045Z† Sun-Mon Nov-Mar

NAV

DME

IHU 111.1 Ch 48 N45 31 21 W73 24 30 (113')

ILS

IHU 111.1 (Rwy 24R) RVR

QUEBEC

AERODROME / FACILITY DIRECTORY

MONTRÉAL / MET (AÉROPORT MÉTROPOLITAIN DE MONTRÉAL) QC (Cont'd) CYHU

PRO	<p>Pilots should refer to Canadian Airport Charts (CAC) to obtain details on established hot spots, prior to operating on maneuvering areas. CAC are available for free on the NAV CANADA website.</p> <p>Pilots are requested to avoid flight below 2000 AGL when flying over the Mont-Saint-Hilaire Migratory Bird Sanctuary (Saint-Hilaire, QC N45 33 00 W73 09 00)</p> <p>Circuits: Rgt hand circuits Rwy 06R, 24R & 28 (CAR 602.96). Preferential rwy: Btwn 04-12Z†, all acft shall, when aprt and wx conditions permitting, land on Rwy 24R and take-off Rwy 06L. Departure: 24L rstd to single engine acft having a GTOW of less than 5000 lbs. Rwy 24L and 24R climb rwy hdg to 1100 ASL BPOC or in the circuit. All VFR acft leaving the CZ, climb to not above 1100 ASL or as assigned by ATC. VFR Codes: Refer to MONTRÉAL VTPC section VFR FLIGHTS IN MONTRÉAL/TRUDEAU, MONTRÉAL/MET (AÉROPORT MÉTROPOLITAIN DE MONTRÉAL), MONTRÉAL (MIRABEL) AND MONTRÉAL TERMINAL CLASS C AIRSPACE. VFR acft towards Montréal/Trudeau: Outside TWR oprg hours, VFR acft proceeding towards Montreal CZ are required to proceed via Lafontaine Tunnel at 2000 ASL or lower if necessary due wx. Mil ramp: PPR 48 hrs 438 Sqn Ops CSN 472-7216. Airspace: Standardized use of common freq 122.1 (north) and 122.575 (south) in Class G airspace around the CZ. CYA 627(S) aprx 20NM NE of aprt up to 3000 ASL cont daylight. Training: VFR circuits PPR 1-800-633-1353 Training areas: See Montréal Terminal VTPC.</p> <p>MONTRÉAL/MET (AÉROPORT MÉTROPOLITAIN DE MONTRÉAL) CZ AIRSPACE SPLIT FOR VFR FLIGHTS</p> <p>During the hours of operation of the control tower, CYHU CZ is divided into two sectors for VFR arrivals with separate frequencies:</p> <ul style="list-style-type: none"> - All VFR arrivals from VARENNES QUARRY ctc St-Hubert TWR on 118.4 (ARR VFR North). - All VFR arrivals from CHAMBLY and ST-PHILIPPE ctc St-Hubert TWR on 121.3 (ARR VFR South and East). <p>VFR ARR/DEP ROUTES</p> <p>All VFR aircraft should follow arrival and departure routes, unless otherwise specified by ATC. See "VFR TERMINAL PROCEDURES CHART - ARR/DEP" for additional details.</p>
CIV HELI	Ctc Gnd 126.4 prior to dep. Dep & arr req Marina, Tunnel, North or Tower rtes or as cleared by ATC. See HELI VTPC for rtes & alts.
MIL HELI	Ctc Gnd 126.4 prior to dep. Holding bay Rwy 06L designated as ldg/tkof pad. See HELI VTPC or rtes & alts.
NOISE	Touch and go: Pursuant to CAR 602.105, the following noise control requirements apply at Montreal/Met (Aéroport Métropolitain de Montréal) airport. Rwy 24L & 24R not auth Oct 1-Apr 30 24-08 hr lcl Mon-Fri, 19-08 hr lcl Sat-Sun. Rwy 24L & 24R not auth May 1-Sep 30 23-08 hr lcl Mon-Fri, 15-08 hr lcl Sat, Nil Sun & hol(s). Noise oprg restrictions & noise abatement procedures in effect. See CAP.
CAUTION	<p>Blasting ops: 9.5NM NE.</p> <p>Beloeil A/D: lctd 8NM NE of Rwy 24. (Circuits ht 1000 ASL).</p> <p>Taxiway: Due to aprt layout twy "T" may be mistaken for Rwy 24L. Firing range: lctd 4.9NM NE of Rwy 24.</p> <p>Mil Ramp: Large mag anomaly in front of the 438 Sqn hg causing mag compasses to deviate as much as 90°.</p>

CANADA WATER AERODROME SUPPLEMENT

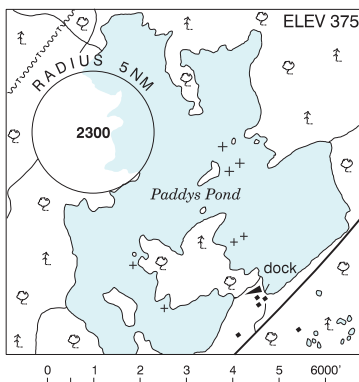
Effective 0901Z 19 March 2026 to 0901Z 18 February 2027

B222 AERODROME/FACILITY DIRECTORY

ST. JOHN'S (PADDYS POND) NL

CCQ5

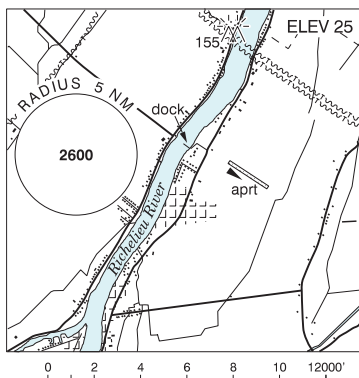
REF	N47 28 W52 54 5SW 19°W (2013) UTC-3½(2½) Elev 375' A5012
OPR	Avalon Float Plane Association 709-364-2855/690-9486 Reg
PF	C-1,2,3 D-4,5,6
FLT PLN	
FIC	London 866-WXBRIEF (Toll free within Canada) or 866-541-4104 (Toll free within Canada & USA)
ACC	(IFR only) Gander 709-651-5225 or 888-751-5225.
SERVICES	
FUEL	100LL PN 1day
S	5
A/D DATA	Open water May-Nov. Ramps & moorings.
COMM	
RCO	London rdo 123.275 (FISE) 126.7 (bcst)
ATF	tfc 123.2 5NM 3400 ASL excluding St. John's Intl CZ
NAV	
VOR/DME	TORBAY YYT 113.5 Ch 82 N47 29 07 W52 51 08 (839')
PRO	Bcst/monitor 123.2 when taxiing.
CAUTION	Strong easterly winds in main pond area. Many shoal areas.



ST-MATHIAS QC

CSV9

REF	N45 30 10 W73 15 08 1N 15°W (2014) UTC-5(4) Elev 25' VTA A5002
OPR	Avn B.L. Inc 450-658-2041 Fax 450-658-3982 Reg
PF	B-1 13-22Z± C-2,3,4,5,6 at adj land A/D
FLT PLN	
FIC	(bil) Québec 866-GOMÉTÉO or 866-WXBRIEF (Toll free within Canada) or 866-541-4105 (Toll free within Canada & USA)
SERVICES	
FUEL	100LL
OIL	W100, 15W50, 20W50, 25W60
S	1,2,3,4,5
A/D DATA	Open water mid Apr-Nov. Depth 4', mud bottom. Asphalt ramps.
COMM	
ATF	tfc 123.2 5NM below 2000 ASL outside CYHU CZ
PRO	Training Areas: See Montréal Terminal VTTC. Pilots are requested to avoid flight below 2000 AGL when flying over the Mont-Saint-Hilaire Migratory Bird Sanctuary (Saint-Hilaire, QC N45 33 00 W73 09 00).
CAUTION	P-lines 155 AGL 0.75NM NE of dock.



CANADA WATER AERODROME SUPPLEMENT

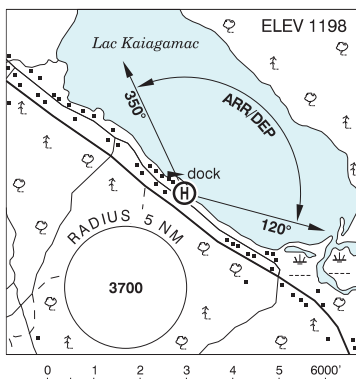
Effective 0901Z 19 March 2026 to 0901Z 18 February 2027

AERODROME/FACILITY DIRECTORY B223

ST-MICHEL-DES-SAINTS / LAC KAIAGAMAC QC

CLK4

REF	N46 39 04 W73 53 39 1.7SSE 15°W (2016) UTC-5(4) Elev 1198' A5002
OPR	Rock Martel 514-473-3005 Reg PPR
PF	C-1,2,3,4,5
FLT PLN	(bil) FIC Québec 866-GOMÉTÉO or 866-WXBRIEF (Toll free within Canada) or 866-541-4105 (Toll free within Canada & USA)
HELI DATA	FATO/TLOF 35' x 35' ASPH Safety Area 60' x 50' Max heli overall length 38.6'
RCR	Opr
A/D DATA	Open water May-Oct. Mud bottom.
COMM	ATF tfc 123.2 5NM 4200 ASL
PRO	Flt over boats and seaplanes proh. Arr/dep 350° to 120° fr heli.
CAUTION	Land A/D 4.5 NM NW. Water A/Ds adj NE, and 2.3NM N.



ST-MICHEL-DES-SAINTS / PORT SAINT MICHEL QC

CMS3

REF	N46 41 24 W73 53 55 3W 15°W (2014) UTC-5(4) Elev 1180' A5002
OPR	Port Saint Michel 514-953-2833, 514-557-7223 Reg
PF	C-1,2,3,4,5,6
FLT PLN	(bil) FIC Québec 866-GOMÉTÉO or 866-WXBRIEF (Toll free within Canada) or 866-541-4105 (Toll free within Canada & USA)
SERVICES	PN mid-May to mid-Oct Opr
FUEL	100LL
OIL	All
S	4,5,6
A/D DATA	Open water May-Nov. Sand bottom. Dock depth 20'.
COMM	ATF tfc 123.2 5NM 4200 ASL
CAUTION	Land A/D 4NM W. Common freq. Lgtd antennas 1NM S of A/D.

