

---

# FLIGHT PLAN & SITE SURVEY

---

N 666-4712 CLUB MODELISTE MONTEREGIE ST-CYPRIEN  
DE NAPIERVILLE- GRAND LIGNE DU RANGE DOUBLE - ST  
CYRPRIEN DE NAPIERVILLE QC

July 10, 2026



## IMPORTANT NOTICE

Please ensure you have received all required authorizations prior to flight. This Site Survey was created using RPAS Wilco. The user accepts all responsibility for the accuracy of the information.

Terms & Conditions: [rpswilco.com/#tnc](https://rpswilco.com/#tnc)

# Mission Information

N 666-4712 CLUB MODELISTE MONTEREGIE ST-CYPRIEN DE NAPIERVILLE- GRAND LIGNE DU RANGE DOUBLE - ST CYPRIEN DE NAPIERVILLE QC

## FLIGHT DETAILS

Reference No:	<b>MAAC-666-4712</b>
Project Name:	<b>CLUB MODELISTE MONTEREGIE ST-CYPRIEN DE NAPIERVILLE</b>
Pilot Name:	<b>MAAC</b>
Pilot Certificate:	
Mission Type:	<b>VLOS</b>
Flight Start:	<b>July 10, 2026 01:00 PM</b>
Flight End:	<b>July 10, 2026 02:00 PM</b>

## LOCATION DETAILS

Flight Address:	<b>GRAND LIGNE DU RANGE DOUBLE - ST CYPRIEN DE NAPIERVILLE QC</b>
Latitude:	<b>45° 7' 19.90" N ( 45.122 )</b>
Longitude:	<b>73° 22' 45.90" W ( -73.379 )</b>
Field Elevation:	<b>171 ft MSL</b>
Altitude / Radius:	<b>400 ft / 926 m ( 0.5 nm )</b>
Classification:	<b>UNCONTROLLED</b>
FIR / Contact:	<b>CZUL / 514-633-3365</b>

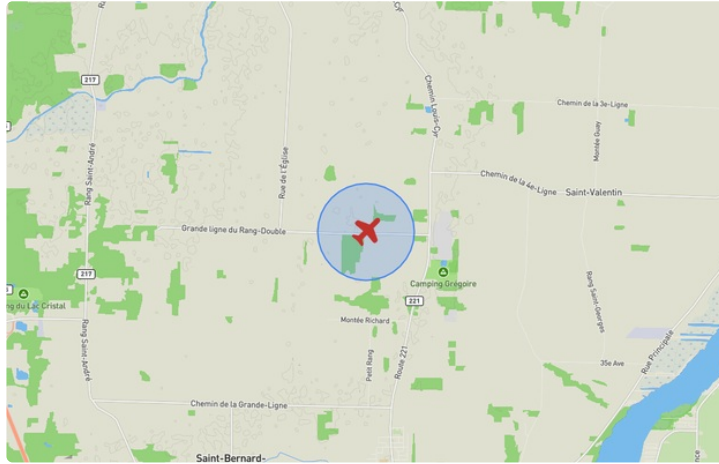
## REPORT CONTENTS

Site Survey • Obstacles (if available) • Nearby Aerodromes • Canadian Aviation Regulations • GFA • Aerodrome Supplements • METAR & TAF • NOTAMs • CFS





# Flight Map & MODEL Details

MISSION LOCATION SURVEY

## FLIGHT AREA MAP



## MISSION LOCATION DETAILS

ROLE	LATITUDE	LONGITUDE
 MODEL	45° 7' 19.90" N 45.122	73° 22' 45.90" W -73.379
 Pilot		
 Payload Op.		
 Observer		

# Airspace Classification

MISSION LOCATION SURVEY

## AIRSPACE MAP



## OVERLYING AIRSPACES

Class	Name	Floor	Ceiling
E	St-Jean, QC [TA]	700AGL	18000MSL
E	3.5.2-4 [CAE]	2000AGL	18000MSL

Planned flight altitude is below the lowest documented airspace layer

## NEAREST AERODROMES & DISTANCE FROM OPERATION

ST-JEAN (CYJN - AERODROME - Cert)	Lat: 45.294	Long: -73.281	20.607KM	11.127NM	N
<b>Operator:</b> NEXDEV: PHONE: 450-359-9999 +4235, POST: UNKNOWN <b>FIR Contact:</b> 514-633-3365					
ST-MICHEL (CML9 - HELIPORT - Reg)	Lat: 45.255	Long: -73.551	19.94KM	10.767NM	NW
<b>Operator:</b> CHANTAL LUSSIER: PHONE: 514-973-4860, POST: UNKNOWN <b>FIR Contact:</b> 514-633-3365					
ST-MATHIEU-DE-LAPRAIRIE (CML8 - AERODROME - Reg)	Lat: 45.311	Long: -73.565	25.546KM	13.794NM	NW
<b>Operator:</b> AEROLANE: PHONE: 514-594-2897, POST: UNKNOWN <b>FIR Contact:</b> 514-633-3365					

## QUEBEC

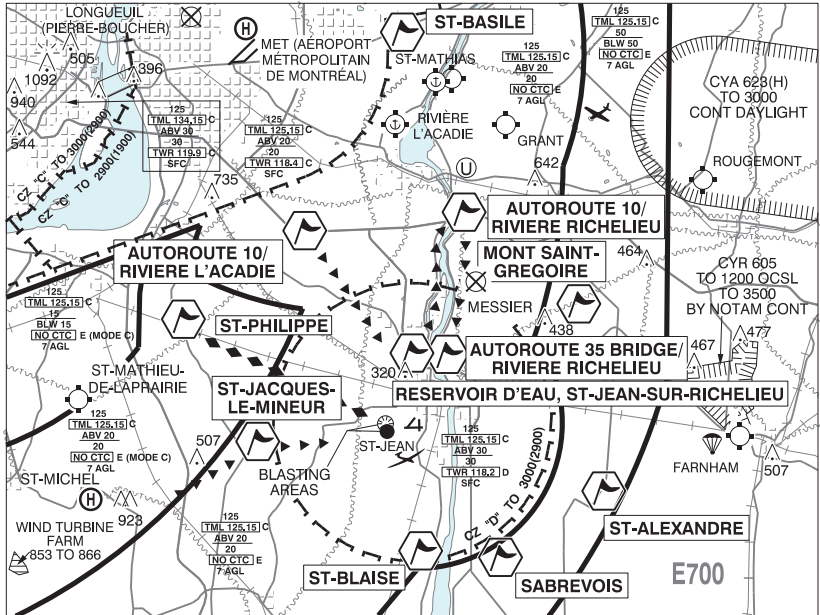
## AERODROME / FACILITY DIRECTORY

## ST-JEAN QC

CYJN

<b>REF</b>	N45 17 40 W73 16 54 Adj SW 15°W (2012) UTC-5(4) Elev 136' VTA A5002 LO6 LO7 LO8 T2 CAP	
<b>OPR</b>	Nexdev 450-359-9999 ext 4235 Cert Ldg fees	
<b>PF</b>	A-7,8 FBO/Apron Password: 1182 B-1 C-2,3,4,5,6	
<b>FLT PLN</b>	(bil)	
<b>FIG</b>	Québec 866-GOMÉTÉO or 866-WXBRIEF (Toll free within Canada) or 866-541-4105 (Toll free within Canada & USA)	
<b>ACC</b>	Montréal 514-633-3211 or 800-633-1353. All Fit Plns, IFR tng fts PPR. Fit Plns by Fax at 514-633-2877 & include phone numbers where pilot can be reached prior to dep. When twr closed IFR clearance or activation 514-633-3014.	
<b>WX</b>	LWIS H24 LAWO 1230-0230Z† Apr-Oct; 13-02Z† Nov-Mar	
<b>SERVICES</b>	14-22Z† Mon-Fri Apr-Nov; 14-22Z† Sat-Sun Apr-May & Oct-Nov; 14-23Z† Sat-Sun Jun-Sep; 14-21Z† Dec-Mar O/T 1hr PN 450-741-6799 call out chg.	
<b>FUEL</b>	JA-1 (FSII avbl), SP, HPR	
<b>OIL</b>	W100, 15W30	
<b>S</b>	4,5,6	
<b>PVT ADV</b>	FBO 123.35 450-741-6799	
<b>RWY DATA</b>	Rwy 11(105°)/29(285°) 4012x100 ASPH Thld 11 displ 600'. Rwy 02(015°)/20(195°) 2438x100 ASPH Rwy 06(060°)/24(240°) 2349x100 ASPH	
<b>RWY CERT</b>	Rwy 11/29 AGN IIIA Rwy 02/20 AGN II Rwy 06/24 AGN II	
<b>TWY CERT</b>	Twy: A, B, E AGN II	
<b>TWY</b>	Twy C, E: uncontrolled.	
<b>RCR</b>	Opr Rwy 11/29 and Rwy 02/20 Nov-Apr snow removal accumulation 3cm or more. Rwy 06/24 no win maint. CRFI PCN	
<b>LIGHTING</b>	11-(T ME), 29-(TE ME) ARCAL-118.2 type J	
<b>COMM</b>	(bil)	
<b>GND</b>	121.7 1230-0230Z† Apr-Oct; 13-02Z† Nov-Mar	
<b>TWR</b>	118.2 (V) 1230-0230Z† Apr-Oct; 13-02Z† Nov-Mar (emerg only 450-347-4233)	
<b>ATF</b>	tfc 118.2 0230-1230Z† Apr-Oct; 02-13Z† Nov-Mar 5NM 3000 ASL	
<b>ARR</b>	Montréal 125.15 268.3	
<b>DEP</b>	Montréal 125.15 268.3	
<b>VFR ADV</b>	Montréal Tml 125.15	
<b>PRO</b>	Rgt hand circuits Rwy 11 (CAR 602.96). Intsv glider tng fr aprt to 3NM S dly fr mid-Apr to mid-Aug & wknds Sep-Nov. VFR training not auth 0230-1230Z†. <b>VFR Codes:</b> Refer to MONTRÉAL VTPC section VFR FLIGHTS IN MONTRÉAL/TRUDEAU, MONTRÉAL/MET (AÉROPORT MÉTROPOLITAIN DE MONTRÉAL), MONTRÉAL/MIRABEL AND MONTRÉAL TERMINAL CLASS C AIRSPACE. <b>Training:</b> VFR circuits PPR 1-800-633-1353. See VTPC for heli arr/dep rte.	
<b>CAUTION</b>	Periodic blasting ops 1NM W of aprt, etc TWR. Possible uncontrolled win maint eqpt on rwy. Increased bird activity Jul-Dec.	

## ST-JEAN VFR TERMINAL PROCEDURES CHART



NAME	IDENT	LAT/LONG
AUTOROUTE 10 / RIVIERE L'ACADIE	VCACD	N45° 24' 28" W073° 22' 06"
AUTOROUTE 10 / RIVIERE RICHELIEU	VCRIC	N45° 24' 55" W073° 14' 34"
AUTOROUTE 35 BRIDGE / RIVIERE RICHELIEU	VCRLU	N45° 19' 37" W073° 15' 36"
MONT SAINT-GREGOIRE	VCGGR	N45° 21' 24" W073° 08' 55"
RESERVOIR D'EAU, ST-JEAN-SUR-RICHELIEU	VCRSV	N45° 19' 39" W073° 17' 23"
SABREVOIS	VCSBR	N45° 12' 24" W073° 13' 44"
ST-ALEXANDRE	VCALX	N45° 14' 23" W073° 06' 59"
ST-BASILE	VCSTB	N45° 31' 36" W073° 17' 20"
ST-BLAISE	VCBLA	N45° 13' 14" W073° 18' 04"
ST-JACQUES-LE-MINEUR	VCSJM	N45° 16' 29" W073° 25' 11"
ST-PHILIPPE	VCLPR	N45° 21' 10" W073° 28' 29"

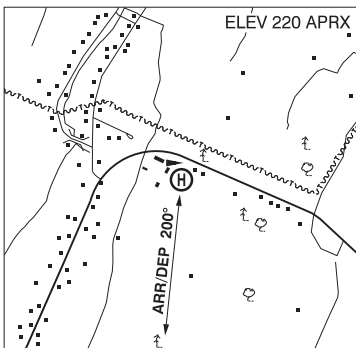
**QUEBEC**

**AERODROME / FACILITY DIRECTORY**

**ST-MICHEL QC (Heli)**

**CML9**

<b>REF</b>	N45 15 18 W73 33 03 1.3 ENE 14°W (2017) UTC-5(4) Elev 220' aprx VTA A5002
<b>OPR</b>	Chantal Lussier 514-973-4860 Reg PPR
<b>FLT PLN</b>	(bil)
<b>FIC</b>	Québec 866-GOMÉTÉO or 866-WXBRIEF (Toll free within Canada) or 866-541-4105 (Toll free within Canada and the USA)
<b>SERVICES</b>	
<b>FUEL</b>	100LL
<b>HELI DATA</b>	FATO/TLOF 50' x 50' ASPH Safety Area 65' x 65' Max heli overall length 38.6'
<b>RCR</b>	Opr
<b>COMM</b>	(bil)
<b>ATF</b>	tfc 123.2 5NM 2000 ASL outside Montreal TCA
<b>PRO</b>	Arr/dep 200° fr heli



## QUEBEC

## AERODROME / FACILITY DIRECTORY

## ST-MATHIEU-DE-LAPRAIRIE QC

CML8

<b>REF</b>	N45 18 40 W73 33 55 2WSW 14°W (2018) UTC-5(4) Elev 155 VTA A5002	
<b>OPR</b>	Aerolane 514-594-2897 Reg PPR	
<b>PF</b>	C-3,5,6	
<b>FLT PLN</b>	(bil)	
<b>FIC</b>	Québec 866-GOMÉTÉO or 866-WXBRIEF (Toll free within Canada) or 866-541-4105 (Toll free within Canada & USA)	
<b>SERVICES</b>		
<b>FUEL</b>	100LL	
<b>S</b>	1,5	
<b>RWY DATA</b>	Rwy13(127°)/31(307°) 3000x50 GRVL/ASPH, ctr 20' ASPH Thld 13 displ 600' Thld 31 displ 400'	
<b>RCR</b>	Opr	
<b>COMM</b>		
<b>ATF</b>	tfc 123.2 5NM 3200 ASL excluding Montréal/Pierre Elliott Trudeau Intl CZ, Montréal/Met (Aéroport Métropolitain de Montréal) CZ and the airspace that lies within Montreal TCA class C airspace	
<b>CAUTION</b>	Lgtd & unlgtd wind turbines to 607 ASL (456 AGL) W of thld 13 (see sketch) and to 653 ASL (456 AGL) aprx 0.7NM S & SW of A/D. 30 AGL P-line crosses apch to Rwy 31, 1400' fr displ thld.	