
FLIGHT PLAN & SITE SURVEY

G 94-5486 OTTAWA R/C CLUB- ORCC - OTTAWA REMOTE
CONTROL CLUB

July 10, 2026



IMPORTANT NOTICE

Please ensure you have received all required authorizations prior to flight. This Site Survey was created using RPAS Wilco. The user accepts all responsibility for the accuracy of the information.

Terms & Conditions: rpaswilco.com/#tnc

Mission Information

G 94-5486 OTTAWA R/C CLUB- ORCC - OTTAWA REMOTE CONTROL CLUB

FLIGHT DETAILS

Reference No:	MAAC-94-5486
Project Name:	OTTAWA R/C CLUB
Pilot Name:	MAAC
Pilot Certificate:	
Mission Type:	VLOS
Flight Start:	July 10, 2026 01:03 PM
Flight End:	July 10, 2026 02:03 PM

LOCATION DETAILS

Flight Address:	ORCC - OTTAWA REMOTE CONTROL CLUB
Latitude:	45° 12' 31.30" N (45.209)
Longitude:	75° 43' 30.50" W (-75.725)
Field Elevation:	328 ft MSL
Altitude / Radius:	400 ft / 926 m (0.5 nm)
Classification:	CONTROLLED
FIR / Contact:	CZUL / 514-633-3365

NOTES

Your flight is in controlled airspace.
If your RPAS is > 250g, please obtain RPAS Flight Authorization using the NavDrone app or by contacting NavCanada. (CARs 901.71)

REPORT CONTENTS

Site Survey • Obstacles (if available) • Nearby Aerodromes • Canadian Aviation Regulations • GFA • Aerodrome Supplements • METAR & TAF • NOTAMS • CFS





Flight Map & MODEL Details

MISSION LOCATION SURVEY

FLIGHT AREA MAP



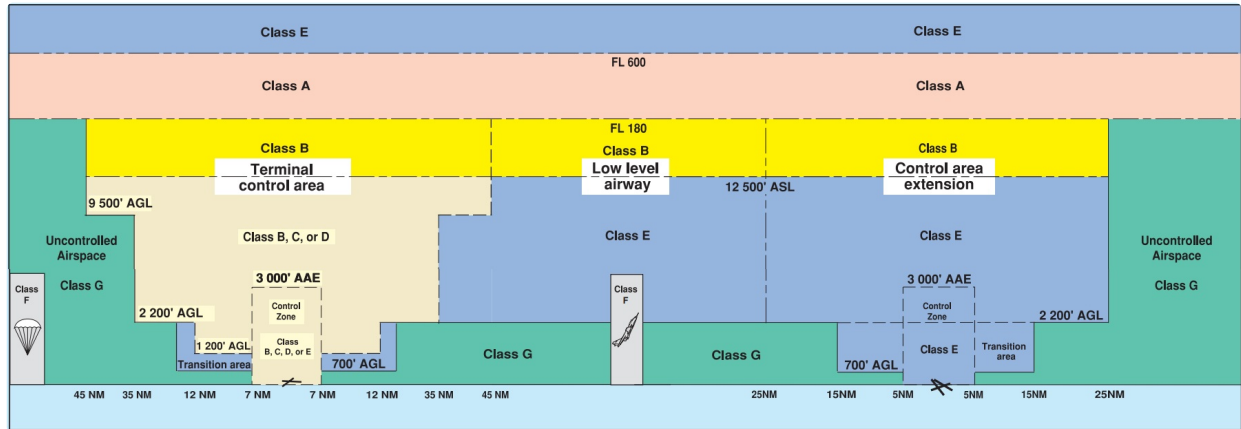
MISSION LOCATION DETAILS

ROLE	LATITUDE	LONGITUDE
 MODEL	45° 12' 31.30" N 45.209	75° 43' 30.50" W -75.725
 Pilot		
 Payload Op.		
 Observer		

Airspace Classification

MISSION LOCATION SURVEY

AIRSPACE MAP



OVERLYING AIRSPACES

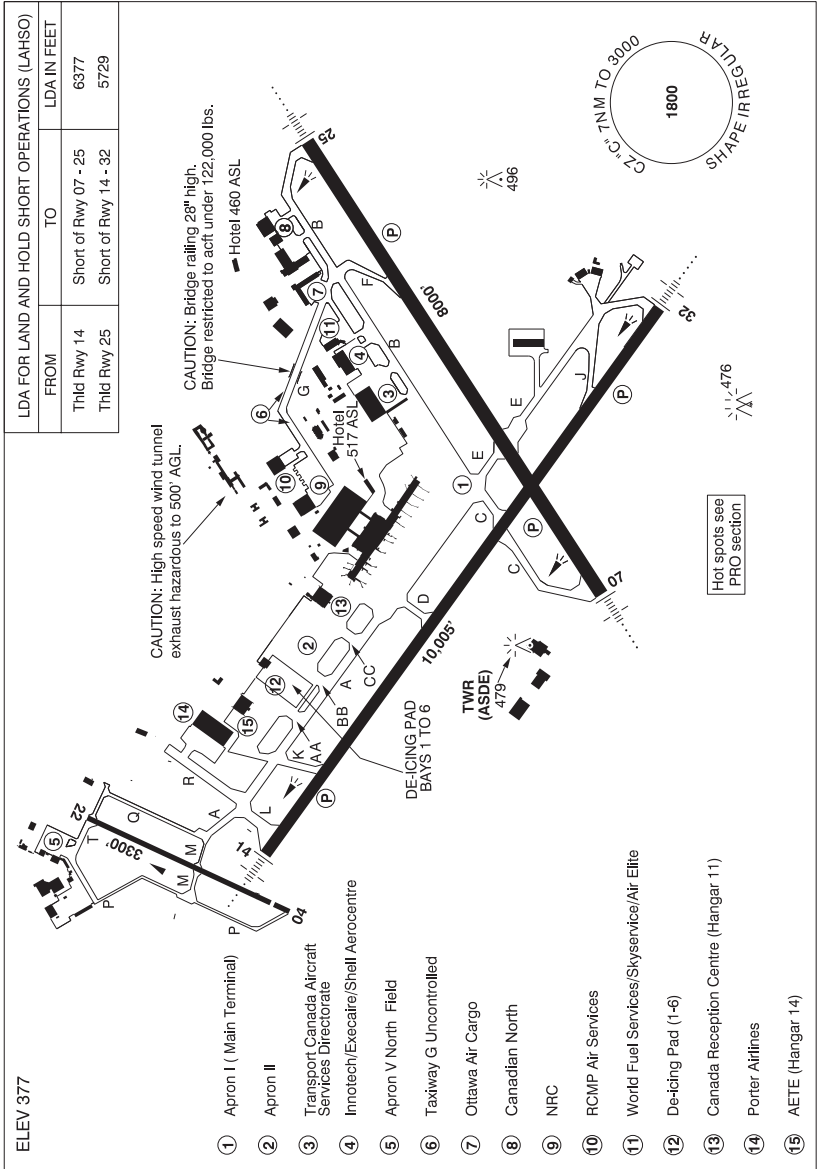
Class	Name	Floor	Ceiling
C	Ottawa/Macdonald-Cartier Intl, ON a) [CZ]	SFC	2000MSL
C	Ottawa, ON g) [TCA]	1500MSL	2500MSL

NEAREST AERODROMES & DISTANCE FROM OPERATION

MACDONALD-CARTIER INTL (CYOW - AERODROME - Cert)	Lat: 45.323	Long: -75.667	13.442KM	7.258NM	N
Operator: OTTAWA MACDONALD-CARTIER INTERNATIONAL AIRPORT AUT: FAX: 613-248-2003, PHONE: 613-248-2121, PHONE: 613-248-2200 +1032, POST: UNKNOWN FIR Contact: 514-633-3365					
RIDEAU VALLEY AIR PARK (CPL3 - AERODROME - Reg)	Lat: 45.1	Long: -75.633	14.068KM	7.596NM	SE
Operator: CHRIS WILLIAMS: PHONE: 613-296-3391, POST: UNKNOWN FIR Contact: 514-633-3365					
DWYER HILL (CYDH - HELIPORT - Mil)	Lat: 45.131	Long: -75.948	19.536KM	10.549NM	SW
Operator: DEPARTMENT OF NATIONAL DEFENCE: PHONE: 613-838-4609, POST: UNKNOWN FIR Contact: 514-633-3365					

OTTAWA / MACDONALD-CARTIER INTL ON

CYOW



REF	N45 19 21 W75 40 02 Adj S 14°W UTC-5(4) Elev 377' A1905 A5000 A5002 LO6 LO7 HI5 T2 CAP OC
OPR	Ottawa Macdonald-Cartier Intl Apt Authority 613-248-2200 H24 Cert
PF	A-1,2,3,6,7 C-4,5

ONTARIO

AERODROME / FACILITY DIRECTORY

OTTAWA / MACDONALD-CARTIER INTL ON (Cont'd)

CYOW

CUST	AOE 888-226-7277 Pilots to call appropriate fixed base opr (FBO) prior to ldg on pvt adv freq & request cust be advised of intended location for clnc. Cust clnc at Apron II 12-05Z† 1 hr PN.
FLT PLN	
 FIC	(bil) Québec 866-GOMÉTÉO or 866-WXBRIEF (Toll free within Canada) or 866-541-4105 (Toll free within Canada & USA)
 ACC WX	Montreal 514-633-3211 or 800-633-1353, all IFR Flt Plns, IFR tng PPR METAR H24
 DUAT	TAF H24, issue times: 00, 03, 06, 09, 12, 15, 18 & 21Z. Ottawa Flying Club; World Fuel Services/Skyservice/Air Elite; Innotech/Execaire/Shell Aerocentre
SERVICES	
 FUEL	100LL, JA-1
 OIL	All
 S	1(ltd), 2,3,4(ltd)
 ARFF	DESIGNATED CAT 8
 SUP FL	LHOX PN, D & A-ice
 PVT ADV	Ottawa Flying Club (North Field) 123.35 12-02Z†; Innotech/Execaire/Shell Aerocentre (South Field) 123.0 11-03Z†; World Fuel Services/Skyservice/Air Elite 129.85 10-05Z†, O/T 613-739-3776
 MIL CON	Sky Service FBO Inc. 613-739-3776
RWY DATA	Rwy 14(140°)/32(320°) 10,005x197 grooved ASPH Rwy 07(071°)/25(251°) 8000x197 grooved ASPH Rwy 04(039°)/22(219°) 3300x75 ASPH Thld 04 displ 250'. Rwy 04 down 0.36%. Rstd to acft not exceeding 60,000 lbs. Sked pax svc not auth. RESA: 07/25 984'; 14/32 1000' Abv 15°C, no acft with more than 100 pax or over 85,000 lbs is auth to perform 180° turns on any rwy without perms 613-248-2013
RWY CERT	Rwy 14 RVR 1200(1/4sm)/Rwy 32 RVR 1200(1/4sm) AGN V Rwy 07 RVR 1200(1/4sm)/Rwy 25 RVR 1200(1/4sm) AGN V Rwy 04/22 AGN II
TWY CERT	Twy A: AGN V fr Apron I to Twy L & AGN II fr Twy L to Twy M Twy G AGN IIIB Twy: M, P, Q, T AGN II
TWY	Twy G: Uncontrolled. Bridge max weight 122,000 lbs. Twy M, P, Q and T rstd to acft not exceeding 60,000 lbs Twy R: Uncontrolled.
APRON	De-icing Bays Bay 1, 3, 4, 6 - May be used by acft with wingspans 36m (118') or less Bay 2 - May be used by acft with the wingspans 65m (213') or less. If CC used, the Taxi must be on the East taxi line only to/from Bay 2. If K used, the taxi must be on the West taxi line only to/from Bay 2. Bay 5 - May be used by acft with the wingspan 65m (213') or less. If CC used, taxi must be on the East taxi line only to/from Bay 5. If K used, the taxi must be on the West taxi line only to/from Bay 5.
RCR	Opr CRFI. PCN
LIGHTING	07-AN(TE HI) P3, 25-AN(TE HI) P3, 14-AN(TE HI) P3, 32-AN(TE HI) P3

ONTARIO

AERODROME / FACILITY DIRECTORY

OTTAWA / MACDONALD-CARTIER INTL ON (Cont'd)

CYOW

COMM	(bil)
RCO	Québec rdo 123.15 (FISE) 126.7 (bcst)
ATIS	(English) 121.15 (French) 132.95
CLNC DEL	Ottawa 119.4 all dep acft to ctc clnc del
GND	Ottawa 121.9
TWR	Ottawa 118.8 (VFR South) 120.1 (VFR North) 118.8 341.3 (V) (emerg only 613-248-3814)
TML	Ottawa 127.7
ARR	Ottawa ARR 135.15
DEP	Ottawa DEP 128.175
NAV	
DME	YOW 114.6 Ch 93 N45 26 30 W75 53 49 (482')
DME	IOW 109.5 Ch 32 N45 18 50 W75 40 01 (398')
ILS	IOW 109.5 (Rwy 07) RVR IRP 110.3 (Rwy 32) RVR
RESTRIC-TIONS	All airlines filing YOW as a diversion airport must have a pre-established contract with a ground handler to service the aircraft in case of a diverted flight.
PRO	<p>Pilots should refer to Canadian Airport Charts (CAC) to obtain details on established hot spots, prior to operating on maneuvering areas. CAC are available for free on the NAV CANADA website.</p> <p>ATC: <u>IFR CLNC ACKNOWLEDGEMENT:</u> IFR clnc read back with Ottawa twr clnc del shall include acft call sign, assigned SID name and transponder code. CIRCUITS: Rgt hand circuits Rwys 07, 14 & 22 (CAR 602.96). FOD: The grade of sand occasionally used on the aprt dur win may pose a FOD hazard to some acft. Formations and other line astern flt ops should adopt pro to avoid ingestion. NOISE ABATEMENT PROCEDURES: Turbojet and turbopan acft; refer to CAP; propeller acft: dep Rwy 32 to 1500 ASL before proceeding on crs. Circuit hgt 1500 ASL Rwys 04-14 to maintain 1500 ASL, wx permitting, until established on final apch. Tng flt permitted 0815-2359 lcl time, no VFR tng circuits on Rwy 14/32 below 1500 ASL, no practice rwy pro to Rwy 14. Turbo-jet take-off and landing not permitted Rwy 04/22.</p> <p>VFR ARR/DEP ROUTES: All VFR acft should follow arr/dep routes, unless otherwise specified by ATC. See OTTAWA M.-C.I. VFR DEPARTURE PROCEDURES CHART and OTTAWA M.-C.I. VFR ARRIVAL PROCEDURES CHART for additional details.</p> <p>DE-ICING OPERATIONS 1. Ctc PAD CONTROL on 122.925 30 min prior to dep if de-icing is rqrd. Notify of any special treatments prior to taxi to CDF. 2. Ctc Ottawa GND after pushback for taxi to CDF. 3. Hold short of the CDF on K, AA, BB or CC and ctc PAD CONTROL for further taxi. 4. Follow instructions and electronic sign boards to de-icing bays. 5. Stop on the 2nd (illuminated) yellow stop bar, immediately set brakes and advise PAD CONTROL. DO NOT MOVE ACFT. This will allow positioning of trucks while you configure your aircraft. 6. Once instructed switch to ICEMAN on 122.350, confirm brakes are set, confirm treatment and that acft is configured for treatment (engines at idle/props feathered/pacs off). If you can't reduce engines to idle ICEMAN must know, de-icing may not be possible with running engines. 7. After de-icing, configure acft for taxi, however, DO NOT MOVE ACFT. 8. Once instructed, ctc PAD CONTROL for taxi. 9. Follow instructions to designated exit point. Holding short of Twy A, ctc GND 121.9</p> <p>AETE (HANGAR 14) Mil aircraft terminating at AETE (Hangar 14) PPR from AETE Ops 1-343-451-7841. When de-ice operations are active, contact Pad Control 122.925 prior to entering Apron II</p>

ONTARIO

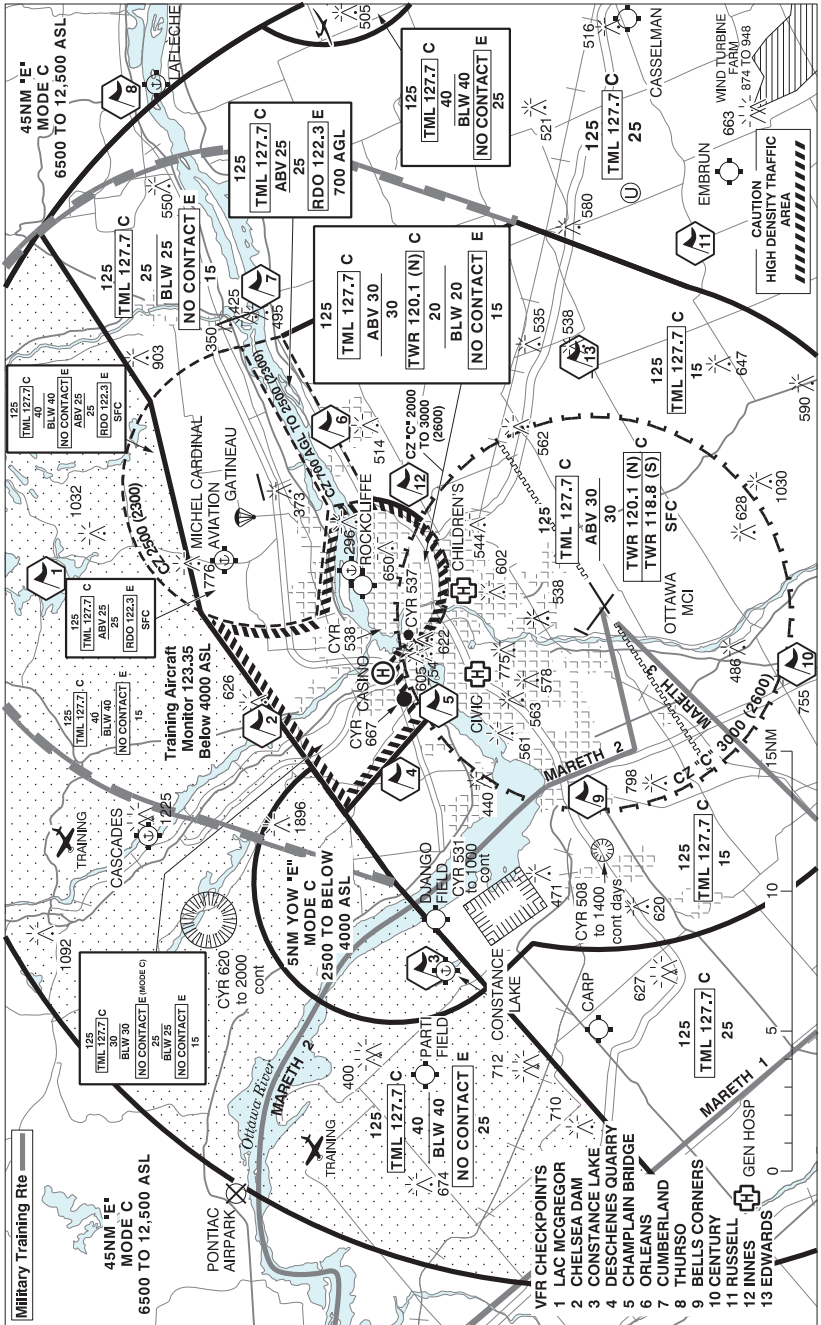
AERODROME / FACILITY DIRECTORY

OTTAWA / MACDONALD-CARTIER INTL ON (Cont'd)

CYOW

PRO (Cont'd)	<p>VFR FLIGHTS IN OTTAWA MACDONALD-CARTIER CLASS C CZ AND TCA TERMINAL.</p> <p>In order to minimize delays, ATC frequency congestion and for better airspace management, as well as to improve safety, a procedure is available allowing VFR aircraft to obtain a transponder code prior to take off. This mandatory procedure applies to VFR aircraft that did not file a flight plan or flight itinerary with Nav Canada and wishing to penetrate or operate in the Ottawa/MacDonald-Cartier Class C and terminal Class C airspace. All acft not respecting mandatory transponder code procedure will not be accepted in Ottawa/MacDonald-Cartier Class C CZ and TCA C airspace.</p> <p>To obtain a transponder code: A discrete transponder code shall be obtained at least 30 minutes prior to the flight taking off toward Ottawa/MacDonald-Cartier Class C CZ and TCA airspace, by contacting the Montreal ACC at 866-VFR-CODE (866-837-2633), or the FIC at 1-866-GOMETEO or 1-866-WX BRIEF, and providing ATC with flight information. Aircraft departing CYUL, CYJN, CYHU, CYOW, CYMX or CYND will obtain their transponder code from the Control Tower or FSS.</p> <p>Flight procedure:</p> <ol style="list-style-type: none"> 1. Set your transponder to the assigned code prior to your first communication with ATC. 2. To the extent possible, ctc ATC at least 5NM prior to entering Ottawa/MacDonald-Cartier Class C and terminal Class C airspace. <p>OTTAWA CZ AIRSPACE SPLIT FOR VFR FLIGHTS</p> <p>YOW CZ is divided into two sectors with separate frequencies. Contact OTTAWA TWR on 120.1 when North of Rwy 07/25 extended centreline and OTTAWA TWR on 118.8 when South of Rwy 07/25 extended centreline or on final for Rwy 07/25. Holding short of Rwy 04/22, contact OTTAWA TWR on 120.1 when ready for take-off.</p>
CAUTION	Migratory birds in vic of aprt Mar-Apr, Sep-Oct.

OTTAWA M.-C.I. VFR TERMINAL PROCEDURES CHART



- VFR CHECKPOINTS**
- 1 LAC MCGREGOR
 - 2 CHELSEA DAM
 - 3 CONSTANCE LAKE
 - 4 DESCHENES QUARRY
 - 5 CHAMPLAIN BRIDGE
 - 6 CUMBERLAND
 - 7 THURSO
 - 8 BELLS CORNERS
 - 9 10 CENTURY
 - 10 RUSSELL
 - 11 INNES
 - 12 EDWARDS
 - 13 EDWARDS

ONTARIO

AERODROME / FACILITY DIRECTORY

OTTAWA M.-C.I. VFR TERMINAL PROCEDURES CHART (Cont'd)

NAME	IDENT	LAT/LONG
BELLS CORNERS	VCBCR	N45° 19' 12" W075° 50' 00"
CENTURY	VCNTY	N45° 11' 22" W075° 43' 16"
CHAMPLAIN BRIDGE	VCCHB	N45° 24' 30" W075° 45' 30"
CHELSEA DAM	VCHL	N45° 30' 48" W075° 46' 32"
CONSTANCE LAKE	VCCON	N45° 25' 00" W075° 59' 00"
CUMBERLAND	VCMBL	N45° 31' 00" W075° 24' 36"
DESCHENES QUARRY	VCQRY	N45° 25' 48" W075° 49' 12"
EDWARDS	VCEDW	N45° 19' 23" W075° 27' 58"
INNES	VCINS	N45° 25' 25" W075° 34' 47"
LAC MCGREGOR	VCPOU	N45° 38' 37" W075° 38' 52"
ORLEANS	VCORL	N45° 28' 34" W075° 31' 27"
RUSSELL	VCRSL	N45° 15' 27" W075° 22' 00"
THURSO	VCGUY	N45° 35' 55" W075° 14' 43"

VFR FLIGHTS IN OTTAWA MACDONALD-CARTIER CLASS C CZ AND TCA TERMINAL

In order to minimize delays, ATC frequency congestion and for better airspace management, as well as to improve safety, a procedure is available allowing VFR aircraft to obtain a transponder code prior to take off. This mandatory procedure applies to VFR aircraft that did not file a flight plan or flight itinerary with Nav Canada and wishing to penetrate or operate in the Ottawa/MacDonald-Cartier Class C and terminal Class C airspace. All acft not respecting mandatory transponder code procedure will not be accepted in Ottawa/MacDonald-Cartier Class C CZ and TCA C airspace.

To obtain a transponder code:

A discrete transponder code shall be obtained at least 30 minutes prior to the flight taking off toward Ottawa/MacDonald-Cartier Class C CZ and TCA airspace, by contacting the Montreal ACC at 866-VFR-CODE (866-837-2633), or the FIC at 1-866-GOMETEO or 1-866-WX BRIEF, and providing ATC with flight information. Aircraft departing CYUL, CYJN, CYHU, CYOW, CYMX or CYND will obtain their transponder code from the Control Tower or FSS.

Flight procedure:

1. Set your transponder to the assigned code prior to your first communication with ATC.
2. To the extent possible, ctc ATC at least 5NM prior to entering Ottawa/MacDonald-Cartier Class C and terminal Class C airspace.

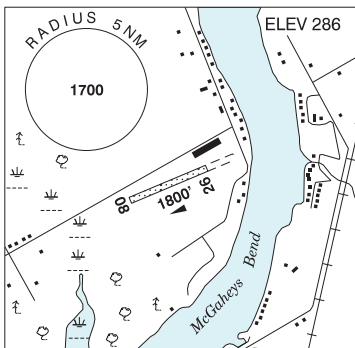
ONTARIO

AERODROME / FACILITY DIRECTORY

KARS / RIDEAU VALLEY AIR PARK ON

CPL3

REF	N45 06 W75 38 3S 14°W UTC-5(4) Elev 286' A1905 A5000 A5002
OPR	Chris Williams 613-296-3391 Reg PPR
PF	C-1,2,4,5 D-3,6
FLT PLN	(bil)
FIC	Québec 866-GOMÉTÉO or 866-WXBRIEF (Toll free within Canada) or 866-541-4105 (Toll free within Canada & USA)
RWY DATA	Rwy 08/26 1800x100 GRASS
RCR	Opr No win maint. May be soft in spring.
COMM	
ATF	tfc 123.4 5NM 3300 ASL excluding the airspace that lies within Ottawa TCA class C airspace
PRO	Glider activity in area.



ONTARIO

AERODROME / FACILITY DIRECTORY

OTTAWA / DWYER HILL ON (Heli)

CYDH

REF	N45 07 50 W75 56 54 14°W UTC-5(4) Elev 325' A1905 A5000 A5002
OPR	DND 613-838-4609 Mil PPR 24 hrs
PF	B-1,2 (avbl 13-21Z±) D-2,3,4,5,6
FLT PLN	(bil)
FIC	Québec 866-GOMÉTÉO or 866-WXBRIEF (Toll free within Canada) or 866-541-4105 (Toll free within Canada & USA)
HELI DATA	180' x 125' GRASS
COMM	MIL Watchdog 173.340 Ltd hrs O/T PPR 24 hrs notice
PRO	All acft must be established abv 500 AGL if not specifically within the tactical flying area. Care must be exercised on arr/dep to not over-fly sur civ residences. Arr/dep 154°/334° to/fr heli.
CAUTION	Mil 990' firing rng loc 330' NE of landing zone. Extv mil flt below 500 AGL in vic.

