
FLIGHT PLAN & SITE SURVEY

L 28-5737 OAKVILLE MFC INC.- UNIFOR Office

July 10, 2026



IMPORTANT NOTICE

Please ensure you have received all required authorizations prior to flight. This Site Survey was created using RPAS Wilco. The user accepts all responsibility for the accuracy of the information.

Terms & Conditions: rpaswilco.com/#tnc

Mission Information

L 28-5737 OAKVILLE MFC INC.- UNIFOR OFFICE

FLIGHT DETAILS

Reference No:	MAAC-28-5737
Project Name:	OAKVILLE MFC INC.
Pilot Name:	MAAC
Pilot Certificate:	
Mission Type:	VLOS
Flight Start:	July 10, 2026 01:03 PM
Flight End:	July 10, 2026 02:03 PM

LOCATION DETAILS

Flight Address:	UNIFOR Office
Latitude:	43° 24' 48.83" N (43.414)
Longitude:	79° 44' 0.77" W (-79.734)
Field Elevation:	354 ft MSL
Altitude / Radius:	400 ft / 926 m (0.5 nm)
Classification:	UNCONTROLLED
FIR / Contact:	CZYZ / 905-676-4509

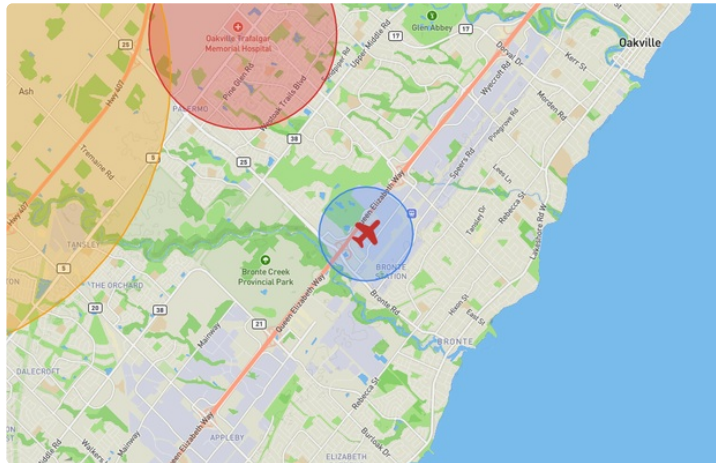
REPORT CONTENTS

Site Survey • Obstacles (if available) • Nearby Aerodromes • Canadian Aviation Regulations • GFA • Aerodrome Supplements • METAR & TAF • NOTAMs • CFS





Flight Map & MODEL Details

MISSION LOCATION SURVEY

FLIGHT AREA MAP



MISSION LOCATION DETAILS

ROLE	LATITUDE	LONGITUDE
 MODEL	43° 24' 48.83" N 43.414	79° 44' 0.77" W -79.734
 Pilot		
 Payload Op.		
 Observer		

Airspace Classification

MISSION LOCATION SURVEY

AIRSPACE MAP



OVERLYING AIRSPACES

Class	Name	Floor	Ceiling
E	3.4.1-43 [TA]	700AGL	1800MSL
C	Toronto, ON b) [TCA]	2000MSL	2500MSL

Planned flight altitude is below the lowest documented airspace layer

NEAREST AERODROMES & DISTANCE FROM OPERATION

OAKVILLE (TRAFALGAR MEM HOSP) (CTM9 - HELIPORT - Cert)	Lat: 43.449	Long: -79.764	4.618KM	2.494NM	NW
Operator: HALTON HEALTH CARE: PHONE: 905-845-2571, POST: Unknown FIR Contact: 905-676-4509					
BURLINGTON EXECUTIVE (CZBA - AERODROME - Reg)	Lat: 43.441	Long: -79.85	9.9KM	5.346NM	W
Operator: VINCE ROSSI: PHONE: 416-399-5739, PHONE: 416-617-2428, PHONE: 905-336-4010, POST: 530-6th Avenue Wainwright T9W 1R6 FIR Contact: 905-676-4509					
HAMILTON HARBOUR (CHH2 - WATERDROME - Reg)	Lat: 43.299	Long: -79.85	15.837KM	8.551NM	SW
Operator: PETER STEWART: PHONE: 905-379-5263, POST: UNKNOWN FIR Contact: 905-676-4509					

ONTARIO

AERODROME / FACILITY DIRECTORY

OAKVILLE (TRAFALGAR MEM HOSP) ON (Heli)

CTM9

REF	N43 26 56 W79 45 49 3.5W 10°W (2015) UTC-5(4) Elev 531' VTA A5000	
OPR	Halton Health Care 905-845-2571 Cert PPR	
FLT PLN	FIC London 866-WXBRIEF (Toll free within Canada) or 866-541-4104 (Toll free within Canada & USA)	
HELI DATA	FATO/TLOF 84' dia ASPH Safety Area 115' dia Max heli overall length 57.4'	
RCR	Opr	
LIGHTING	RY(LO) green	
COMM		
ATF VFR ADV	tfc 123.5 4NM below 2500 ASL Toronto 119.3	
PRO	Arr/dep 147°-192° fr heli (H1), day/night use. Arr/dep 192°-282° fr heli, slope 16% (H2), day/night use.	
CAUTION	Hosp building N and E of heli, unmarked P-lines and light standards S and W of heli.	

ONTARIO

AERODROME / FACILITY DIRECTORY

BURLINGTON EXECUTIVE ON

CZBA

REF	N43 26 29 W79 51 01 10°W (2013) UTC-5(4) Elev 601' VTA A5000 LO6 T2 CAP	
OPR	Vince Rossi 905-336-4010 (Day), 416-617-2428 (Night) Reg	
PF	C-1,2,3,4,5,6,7	
CUST	AOE/CAN	
FLT PLN		
FIC	London 866-WXBRIEF (Toll free within Canada) or 866-541-4104 (Toll free within Canada & USA)	
WX	AUTO (see COMM) WxCam	
SERVICES		
FUEL	100LL, JA cardlock dispenser	
OIL	100	
S	1,2,3,4,5	
RWY DATA	Rwy 14(141°)/32(321°) 3950x100 ASPH Rwy 14 down 0.61% Thld 14 displ 181'. Thld 32 displ 409'. Rwy 09(086°)/27(266°) 2464x50 asphalt Rwy 09 down 0.42% Thld 09 displ 328'. Thld 27 displ 254'	
RCR	Opr 13-23Z† or Spectrum Airways 905-336-4010	
LIGHTING	14-AS(TE LO) AP, 32-AS(TE LO) AP ARCAL-123.5 type J.	
COMM		
ATF	UNICOM ltd hrs O/T tfc 123.5 5NM below 2500 ASL	
TML	Toronto 119.3	
AUTO	122.55	
PRO	Circuit hgt 1500' ASL. Rgt hand circuits Rwy 27 & 32 (CAR 602.96). As soon as practicable after take-off fr Rwy 14 turn left 5° to avoid noise sensitive area. Helicopters follow fixed-wing circuit procedures. Rwy 14/32 preferential.	
CAUTION	50 ft trees on apch to Rwy 32 loc aprx 400' from thld of Rwy 32. Abn on top of twr 755 ASL (148 AGL) aprx 1635' N A/D. No runout area avbl beyond end of Rwy 09, 14, 27. Occasional wildlife activity.	

CANADA WATER AERODROME SUPPLEMENT

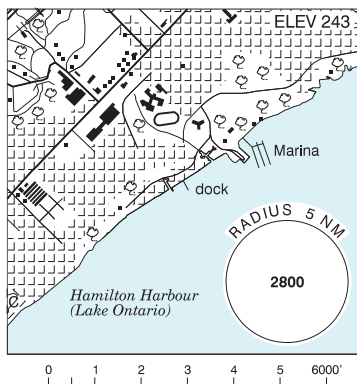
Effective 0901Z 19 March 2026 to 0901Z 18 February 2027

AERODROME/FACILITY DIRECTORY B23

BURLINGTON / HAMILTON HARBOUR ON

CHH2

REF	N43 17 56 W79 50 59 2.72SW 10°W (2014) UTC-5(4) Elev 243' VTA A5000
OPR	Peter Stewart 905-379-5263 Reg PPR
PF	C-2,3,4,5,6
FLT PLN	FIG London 866-WXBRIEF (Toll free within Canada) or 866-541-4104 (Toll free within Canada & USA)
SERVICES	S 7
A/D DATA	Open water Apr-Oct, mud sand bottom, depth 4'.
COMM	ATF tfc 122.8 2NM excluding Hamilton CZ 3300 ASL
CAUTION	Lgt'd twr 1787 ASL (1000 AGL) aprx 5NM WNW of A/D.

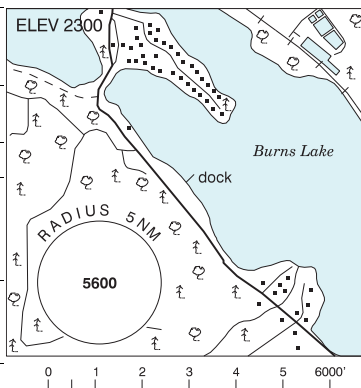


BURNEGIE BAY ON — See LAKE JOSEPH / BURNEGIE BAY

BURNS LAKE (LD AIR) BC

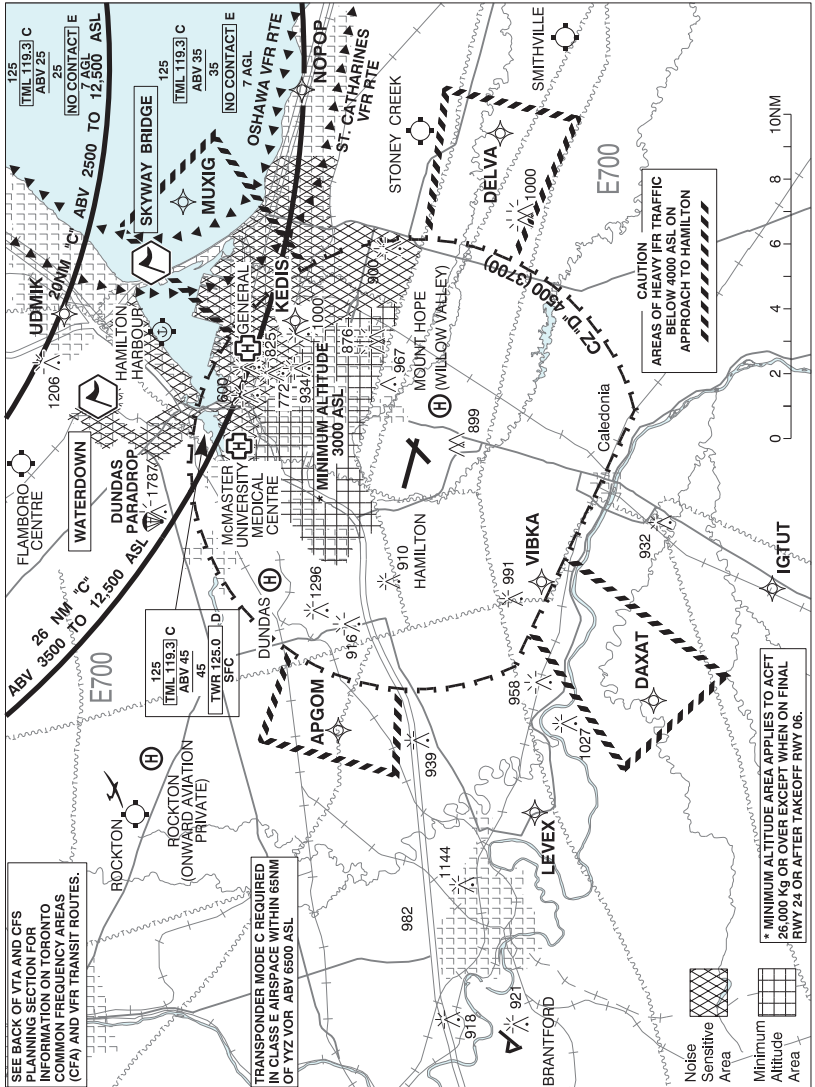
CLD3

REF	N54 12 37 W125 45 27 1.4SSE 19°E (2011) UTC-8(7) Elev 2300' A5013
OPR	Lakes District Air Svcs 250-692-3229 Reg PN
PF	B-1,3 C-2,4,5,6
FLT PLN	FIG Kamloops 866-WXBRIEF (Toll free within Canada) or 866-541-4101 (Toll free within Canada & USA)
SERVICES	PN
FUEL	100LL
OIL	25-60, 15W50, 20-50
A/D DATA	Open water May to mid-Nov. Depth 8' at dock, muddy bottom.
COMM	ATF tfc 123.2 5NM 5300 ASL
PRO	Avoid circuit over town and tkof in front of houses on lake.
CAUTION	Burns Lake land A/D aprx 7NM NW. Heli status unkn 1.5NM N. Twr on hill abv dock 150 AGL.



BUTTERFLY LAKE ON — See PORT CARLING / BUTTERFLY LAKE

HAMILTON VFR TERMINAL PROCEDURES CHART



NAME	IDENT	LAT/LONG
SKYWAY BRIDGE	VCBBR	N43° 18' 00" W079° 47' 45"
WATERDOWN	VCWTD	N43° 19' 45" W079° 53' 15"