
FLIGHT PLAN & SITE SURVEY

L 119-5367 ELECTRIC MODEL FLYERS OF SOUTHERN
ONTARIO- Trio Sportsplex-INDOOR

July 10, 2026



IMPORTANT NOTICE

Please ensure you have received all required authorizations prior to flight. This Site Survey was created using RPAS Wilco. The user accepts all responsibility for the accuracy of the information.

Terms & Conditions: rpaswilco.com/#tnc

Mission Information

L 119-5367 ELECTRIC MODEL FLYERS OF SOUTHERN ONTARIO- TRIO SPORTSPLEX-INDOOR

FLIGHT DETAILS

Reference No:	MAAC-119-5367
Project Name:	ELECTRIC MODEL FLYERS OF SOUTHERN ONTARIO
Pilot Name:	MAAC
Pilot Certificate:	
Mission Type:	VLOS
Flight Start:	July 10, 2026 01:03 PM
Flight End:	July 10, 2026 02:03 PM

LOCATION DETAILS

Flight Address:	Trio Sportsplex-INDOOR
Latitude:	43° 51' 50.53" N (43.864)
Longitude:	79° 33' 14.60" W (-79.554)
Field Elevation:	794 ft MSL
Altitude / Radius:	400 ft / 926 m (0.5 nm)
Classification:	UNCONTROLLED
FIR / Contact:	CZYZ / 905-676-4509

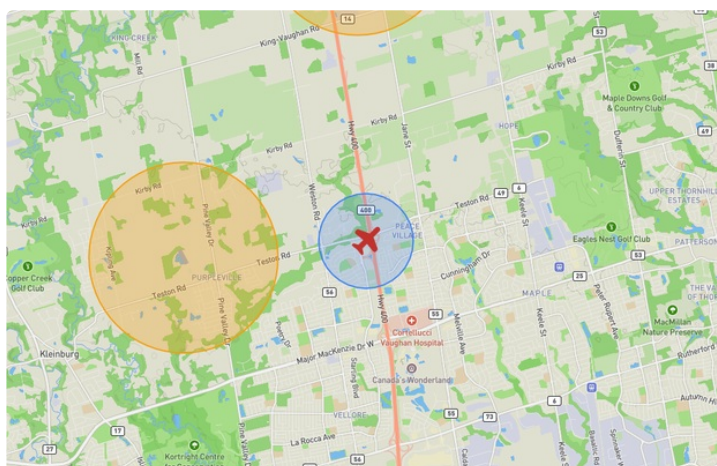
REPORT CONTENTS

Site Survey • Obstacles (if available) • Nearby Aerodromes • Canadian Aviation Regulations • GFA • Aerodrome Supplements • METAR & TAF • NOTAMs • CFS


Flight Map & MODEL Details

MISSION LOCATION SURVEY

FLIGHT AREA MAP



MISSION LOCATION DETAILS

ROLE	LATITUDE	LONGITUDE
 MODEL	43° 51' 50.53" N 43.864	79° 33' 14.60" W -79.554
 Pilot		
 Payload Op.		
 Observer		

Airspace Classification

MISSION LOCATION SURVEY

AIRSPACE MAP



OVERLYING AIRSPACES

Class	Name	Floor	Ceiling
E	3.4.1-43 [TA]	700AGL	18000MSL
C	Toronto, ON b) [TCA]	2000MSL	2500MSL

Planned flight altitude is below the lowest documented airspace layer

NEAREST AERODROMES & DISTANCE FROM OPERATION

KLEINBURG (TAVARES FIELD) (CTV4 - AERODROME/HELIPORT - Reg)	Lat: 43.861	Long: -79.599	3.587KM	1.937NM	W
Operator: DANIEL TAVARES: PHONE: 416-801-5567, POST: UNKNOWN FIR Contact: 905-676-4509					
KINGBRIDGE (CKC3 - HELIPORT - Reg)	Lat: 43.917	Long: -79.556	5.885KM	3.178NM	N
Operator: THE KINGBRIDGE CENTRE: PHONE: 437-996-0396, POST: UNKNOWN FIR Contact: 905-676-4509					
AMAROO (CNA6 - HELIPORT - Reg)	Lat: 43.955	Long: -79.619	11.343KM	6.125NM	NW
Operator: D. VALELA: PHONE: 416-275-9972, POST: UNKNOWN FIR Contact: 905-676-4509					

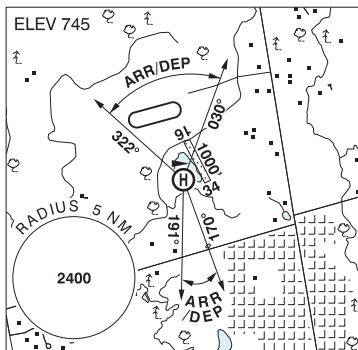
ONTARIO

AERODROME / FACILITY DIRECTORY

KLEINBURG (TAVARES FIELD) ON

CTV4

REF	N43 51 40 W79 35 55 1.7NE 10°W (2023) UTC-5(4) Elev 745' A1900 A5000
OPR	Daniel Tavares 416-801-5567 Reg PPR
FLT PLN	FIC London 866-WXBRIEF (Toll free within Canada) or 866-541-4104 (Toll free within Canada & USA)
RWY DATA	Rwy 16/34 1000x40 GRASS
RCR	Opr No win maint
HELI DATA	FATO/TLOF 60' dia GRASS Safety Area 79' dia Max heli overall length 39'
COMM	ATF tfc 123.2 4NM 1700 ASL
PRO	Arr/dep btwn 322°-030° and btwn 170°-191° fr heli. Ctc Toronto Tml before entering Class C airspace 1700 ASL and above, overlying A/D.
CAUTION	Lgtd twr 896 ASL (197 AGL) 0.2NM WSW of A/D. Heli 400' W of rwy.



ONTARIO

AERODROME / FACILITY DIRECTORY

KING CITY / KINGBRIDGE ON (Heli)

CKC3

REF	N43 55 01 W79 33 22 1.4WSW 10°W (2024) UTC-5(4) Elev 932' A1900 A5000	
OPR	The Kingbridge Centre 437-996-0396 Reg PPR Ldg fees	
PF	A-1,2,3,5,7 C-4,6,8	
FLT PLN		
FIC	London 866-WXBRIEF (Toll free within Canada) or 866-541-4104 (Toll free within Canada & USA)	
HELI DATA	FATO 65' x 65' ASPH TLOF 30' dia ASPH Max heli overall length 43.3'	
RCR	Opr	
COMM		
ATF	ffc 123.2 5NM 2500 ASL excluding that portion which penetrates Toronto class C Airspace	
PRO	Arr/dep S of heli, or vertical dep over trees to W. Ctc opr to ensure helipad is clear prior to ldg. Avoid overflight of bldgs and structures.	
CAUTION	Ocsl events and outdoor gatherings on grounds. Confirm with opr prior to arrival.	

ONTARIO

AERODROME / FACILITY DIRECTORY

SCHOMBERG / AMAROO ON (Heli)

CNA6

REF	N43 57 17 W79 37 08 4.2SSE 10°W (2025) UTC-5(4) Elev 1125' VTA A5000
OPR	D. Valela 416-275-9972 Reg PPR
FLT PLN	
FIC	London 866-WXBRIEF (Toll free within Canada) or 866-541-4104 (Toll free within Canada & USA)
HELI DATA	FATO 83' x 83' GRASS TLOF 30' x 30' CONC Safety Area 111' x 111' 20,000 lbs Max heli overall length 55'
RCR	Opr Win maint PN
LIGHTING	RW(ME) green LED
COMM	
ATF	tfc 123.2 5NM 2500 ASL excluding that portion which penetrates Toronto class C airspace
PRO	Arr/dep 115° to 135° fr heli, slope 10% (H3). Arr/dep 260° to 275° fr heli, slope 10% (H3).
CAUTION	Horses ocsl at large and children ocsl at play in vic of heli.

