

---

# FLIGHT PLAN & SITE SURVEY

---

C 230-5734 PENTICTON MODEL AVIATION CLUB- Pyramid  
(Kickininee) Provincial Park

July 10, 2026



**IMPORTANT NOTICE**

Please ensure you have received all required authorizations prior to flight. This Site Survey was created using RPAS Wilco. The user accepts all responsibility for the accuracy of the information.

Terms & Conditions: [rpswilco.com/#tnc](https://rpswilco.com/#tnc)

# Mission Information

C 230-5734 PENTICTON MODEL AVIATION CLUB- PYRAMID (KICKININEE) PROVINCIAL PARK

## FLIGHT DETAILS

Reference No:	<b>MAAC-230-5734</b>
Project Name:	<b>PENTICTON MODEL AVIATION CLUB</b>
Pilot Name:	<b>MAAC</b>
Pilot Certificate:	
Mission Type:	<b>VLOS</b>
Flight Start:	<b>July 10, 2026 10:04 AM</b>
Flight End:	<b>July 10, 2026 11:04 AM</b>

## LOCATION DETAILS

Flight Address:	<b>Pyramid (Kickinnee) Provincial Park</b>
Latitude:	<b>49° 33' 1.76" N ( 49.55 )</b>
Longitude:	<b>119° 38' 0.93" W ( -119.634 )</b>
Field Elevation:	<b>1145 ft MSL</b>
Altitude / Radius:	<b>400 ft / 926 m ( 0.5 nm )</b>
Classification:	<b>CONTROLLED</b>
FIR / Contact:	<b>CZVR / 604-586-4500</b>

### NOTES

Your flight is in controlled airspace.  
If your RPAS is > 250g, please obtain RPAS Flight Authorization using the NavDrone app or by contacting NavCanada. (CARs 901.71)

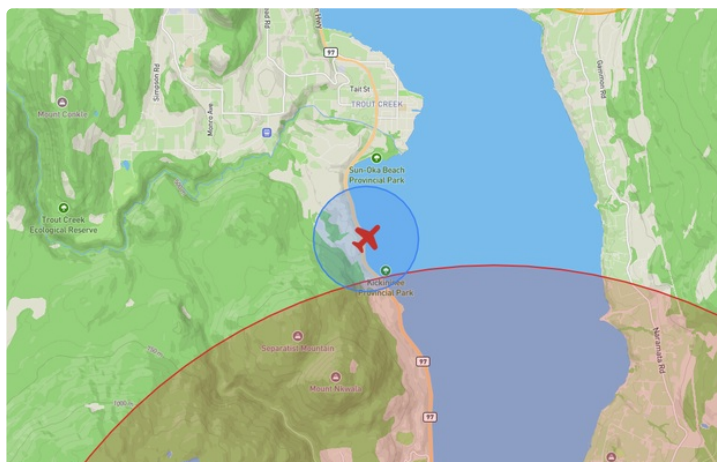
## REPORT CONTENTS

Site Survey • Obstacles (if available) • Nearby Aerodromes • Canadian Aviation Regulations • GFA • Aerodrome Supplements • METAR & TAF • NOTAMS • CFS



# Flight Map & MODEL Details

MISSION LOCATION SURVEY

## FLIGHT AREA MAP



## MISSION LOCATION DETAILS

ROLE	LATITUDE	LONGITUDE
 MODEL	49° 33' 1.76" N 49.55	119° 38' 0.93" W -119.634
 Pilot		
 Payload Op.		
 Observer		

# Airspace Classification

MISSION LOCATION SURVEY

## AIRSPACE MAP



## OVERLYING AIRSPACES

Class	Name	Floor	Ceiling
E	Penticton, BC [CZ]	SFC	3000GND
E	Kelowna/Penticton, BC [TA]	700AGL	18000MSL

## NEAREST AERODROMES & DISTANCE FROM OPERATION

PENTICTON (CYYF - AERODROME - Cert)	Lat: 49.463	Long: -119.602	10.043KM	5.423NM	S
<b>Operator:</b> TRANSPORT CANADA: PHONE: 250-770-4422, PHONE: 250-809-4596, POST: UNKNOWN <b>FIR Contact:</b> 604-586-4500					
NARAMATA (CNM6 - HELIPORT - Reg)	Lat: 49.603	Long: -119.579	7.037KM	3.8NM	NE
<b>Operator:</b> FINNAIR LTD: PHONE: 250-770-0702, POST: UNKNOWN <b>FIR Contact:</b> 604-586-4500					
PENTICTON REGIONAL HOSPITAL (CPH6 - HELIPORT - Cert)	Lat: 49.482	Long: -119.576	8.705KM	4.7NM	SE
<b>Operator:</b> INTERIOR HEALTH AUTHORITY: PHONE: 250-462-3785, POST: UNKNOWN <b>FIR Contact:</b> 604-586-4500					

## BRITISH COLUMBIA

## AERODROME / FACILITY DIRECTORY

## PENTICTON BC

CYFF

<b>REF</b>	N49 27 45 W119 36 08 1.8SW 16°E (2015) UTC-8(7) Elev 1130' A5004 A5005 LO2 HI3 CAP RCAP	
<b>OPR</b>	TC APM 250-809-4596 Admin 250-770-4422 1600-0030Z† Mon-Fri exc hols H24 Cert	
<b>PF</b>	A-2,3,6,7,8 B-5 C-4	
<b>CUST</b>	AOE/30 (120 with staged off-loading) CANPASS 1-888-226-7277 1630-0030Z† Mon-Fri	
<b>FLT PLN</b>	<p><b>FIC</b> Kamloops 866-WXBRIEF (Toll free within Canada) or 866-541-4101 (Toll free within Canada &amp; USA)</p> <p><b>WX</b> METAR H24. TAF H24, issue times: 01, 07, 13, 19Z.</p>	
<b>SERVICES</b>	<p><b>FUEL</b> 100LL, JA-1 14-05Z† Mon-Fri 15-04Z† Sat-Sun</p> <p><b>OIL</b> 80, 100, 120, 15W50</p> <p><b>S</b> 1,2</p> <p><b>JASU</b> CE15 Executive Aviation 250-715-5345</p> <p><b>MILCON</b> Executive Flight Centre Fuel 250-493-5323</p>	
<b>RWY DATA</b>	Rwy 16(165°)/34(345°) 6000x149 ASPH Thld 34 displ 300'.	
<b>RWY CERT</b>	Rwy 16/34 AGN IIIB	
<b>APRON</b>	GA prkg on apron N of tml only. Park on N and NE edges. Non-wheeled heli prkg avbl on grass N of main apron. Itinerant pilot and pax access via Gate 88. Lgt acct prkg avbl off Twy A, S end. PPR required for all prkg - request via <a href="http://yyf.vortexcms.com/ppr">yyf.vortexcms.com/ppr</a> . Prkg fees. Wildfire Heli Ops: Staging and extended prkg on grass N of tml and maint fac, and S of Air Tanker Base along W fence. Apron II: Pvt	
<b>RCR</b>	Opr Ltd win maint 15-01Z† Mon-Fri, 17Z† & 23Z† Sat-Sun & hols Nov 1-Mar 31, O/T 2 hr PN call out chg may be levied. CRFI, PCN	
<b>LIGHTING</b>	16-AO(TE ME) P2, 34-AS(TE ME) P2 PAPI limitation/restriction. PAPI Rwy 34 to be used only within 2NM of thld. ARCAL-118.5 type K avbl when FSS clsd.	
<b>COMM</b>	<p><b>RADIO</b> 118.5 PTC avbl (V) (emerg only 250-492-3001)</p> <p><b>GND ADV</b> 121.9 (emerg only 250-492-3001)</p> <p><b>MF</b> rdo 118.5 5NM 4100 ASL (CAR 602.98)</p>	
<b>NAV</b>	<p><b>DME</b> IYF 110.3 Ch 40 N49 27 09 W119 36 14 (1134')</p> <p><b>LOC</b> IYF 110.3 (Rwy 16)</p>	

## BRITISH COLUMBIA

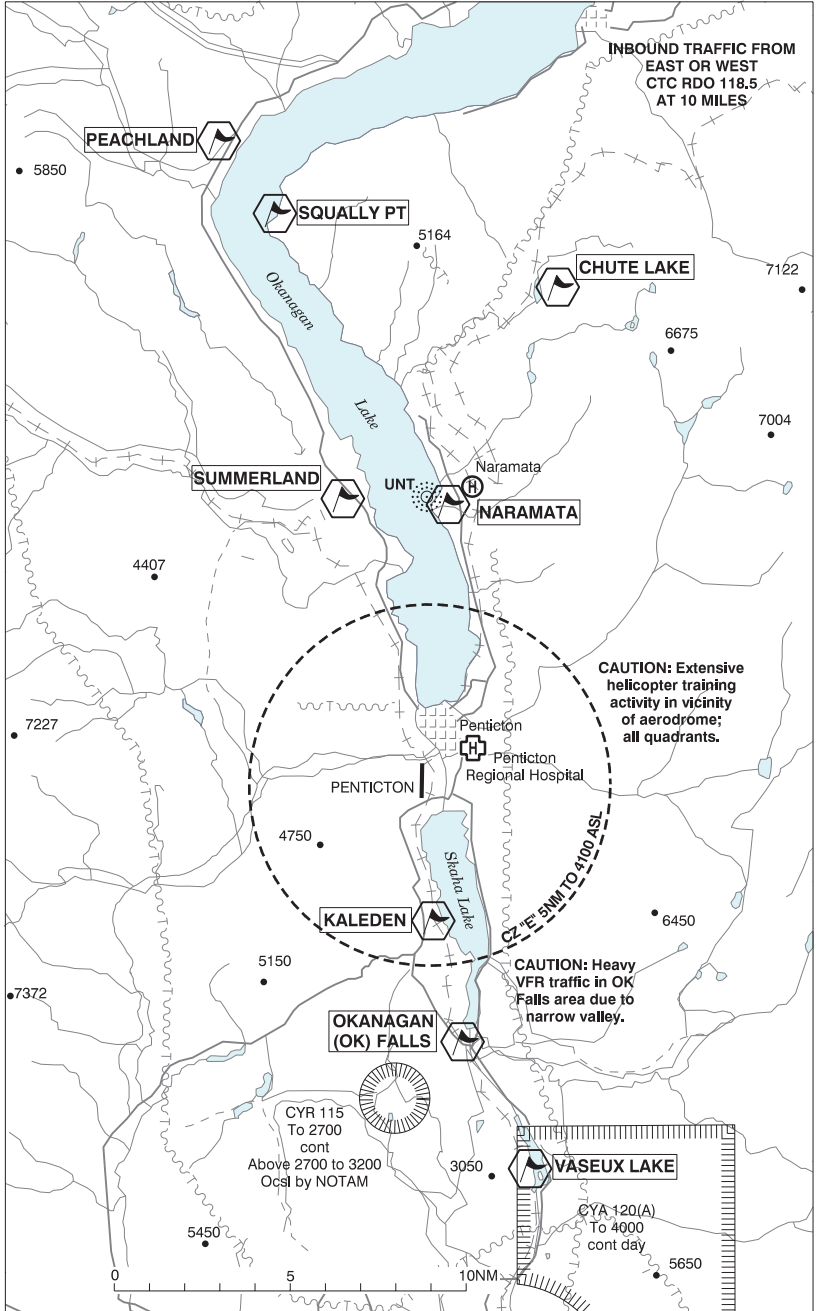
## AERODROME / FACILITY DIRECTORY

## PENTICTON BC (Cont'd)

CYYF

<b>PRO</b>	<p>Inbd tfc see VTPC; for night circuit pro see Night Circuit VTPC. Circuit hgt 2300 ASL. Rgt hand circuits Rwy 34 (CAR 602.96). Heli tng all quadrants, circuits E &amp; W of A/D at 2300 ASL.</p> <p><b>GROUND ADVISORY:</b> The Minister has authorized specific operating restrictions regarding communications intended for the MF, as well as the introduction of a Ground Advisory frequency (GND ADV) pursuant to CARs 602.97(2), 602.98(1) and 602.99.</p> <p><b>Departure procedure:</b> Prior to taxi for departure; contact GND ADV on 121.9 for clearance and initial advisory information. After receiving initial advisory information, GND ADV will initiate communication transfer to RADIO on 118.5 prior to entering the runway/departure surface. Pilots are required to ascertain that there is no likelihood of collision with another aircraft or a vehicle prior to departure as stated in CAR 602.96 2a) and b).</p> <p><b>Arrival procedure:</b> After exiting the runway/arrival surface and reporting clear on the radio frequency, pilots will be directed to contact GND ADV on 121.9 for ground traffic and taxiing information before entering the taxiway.</p>
<b>CAUTION</b>	<p>Only pilots familiar with local terrain should use this aprt dur hrs of darkness. Ngt ops not recommended unless all 7 hazard beacons oprg. Extv heli activity at A/D dur daylight hrs all quads. Due to high terrain, it is recommended pilots proceeding E or W under VFR, attain an alt of 5,000' (ASL) min before leaving the Okanagan Valley. Hi terrain reduces operational length of Rwy 34 PAPI. Extv bird activity in vic.</p>

**PENTICTON VFR TERMINAL PROCEDURES CHART**



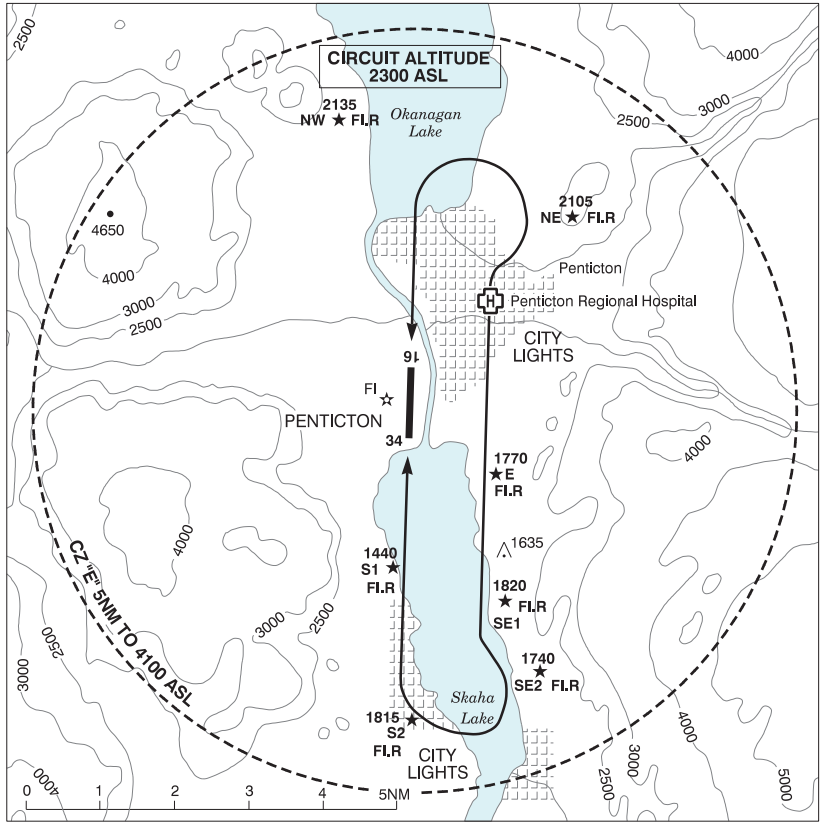
## BRITISH COLUMBIA

AERODROME / FACILITY DIRECTORY

**PENTICTON VFR TERMINAL PROCEDURES CHART (Cont'd)**

<b>NAME</b>	<b>IDENT</b>	<b>LAT/LONG</b>
KALEDEN	VCKLE	N49° 24' 00" W119° 36' 00"
NARAMATA	VCNAR	N49° 35' 50" W119° 36' 11"
OKANAGAN (OK) FALLS	VCOKN	N49° 20' 33" W119° 34' 08"
PEACHLAND	VCPCH	N49° 46' 00" W119° 43' 59"
SQUALLY PT	VCSQL	N49° 44' 00" W119° 43' 01"
SUMMERLAND	VCSML	N49° 36' 00" W119° 40' 01"
VASEUX LAKE	VCVAS	N49° 17' 00" W119° 31' 59"
CHUTE LAKE	VCCHL	N49° 41' 38" W119° 31' 52"

**PENTICTON VFR TERMINAL PROCEDURES CHART - NIGHT CIRCUIT PROCEDURE**



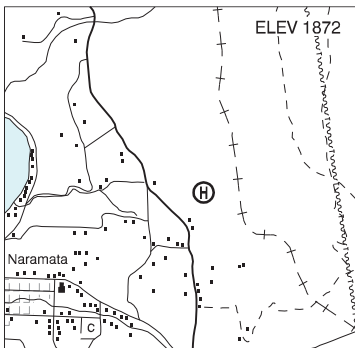
**BRITISH COLUMBIA**

**AERODROME / FACILITY DIRECTORY**

**NARAMATA BC (Heli)**

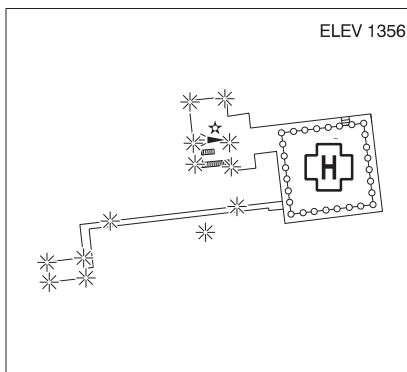
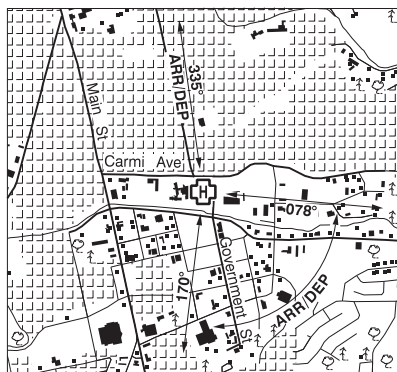
**CNM6**

<b>REF</b>	N49 36 10 W119 34 43 1ENE 16°E (2015) UTC-8(7) Elev 1872' A5004 A5005
<b>OPR</b>	Finnair Ltd 250-770-0702 Reg PPR
<b>FLT PLN</b>	
<b>FIC</b>	Kamloops 866-WXBRIEF (Toll free within Canada) or 866-541-4101 (Toll free within Canada & USA)
<b>HELI DATA</b>	75' x 75' GRVL 200'x 200' max heli length 50', max 8000 lbs
<b>RCR</b>	Opr Days only
<b>COMM</b>	
<b>ATF</b>	ffc 123.2 0.5NM 2200 ASL
<b>PRO</b>	Dep/arr over abandoned railway to minimize noise. (Monitor Penticton 118.5 - See Penticton VTPC)
<b>CAUTION</b>	Power lines SSW of pad.



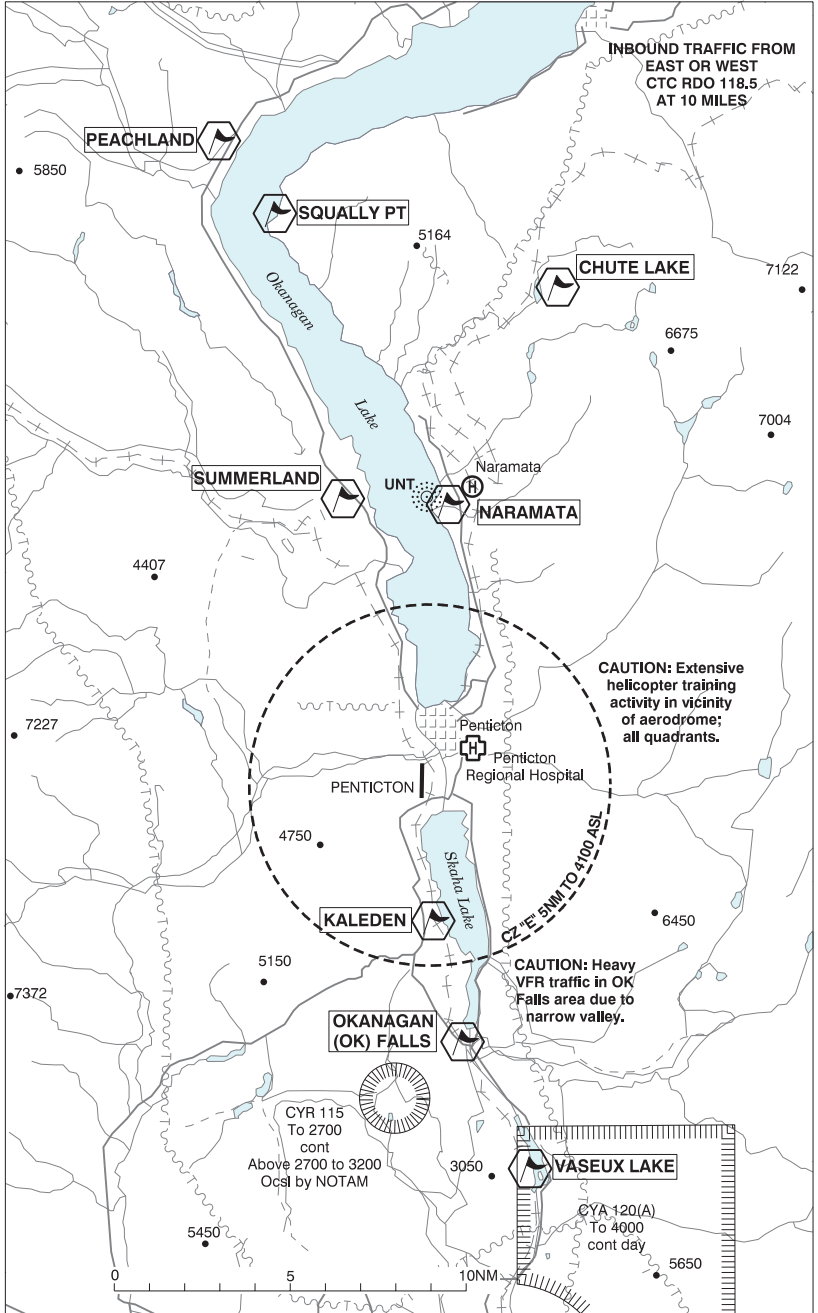
**PENTICTON REGIONAL HOSPITAL BC (Heli)**

**CPH6**



<b>REF</b>	N49 28 54 W119 34 34 Adj 17°E (2018) UTC-8(7) Elev 1356' A5004 A5005
<b>OPR</b>	Interior Health Authority 250-462-3785 Cert PPR
<b>PF</b>	B-1
<b>FLT PLN</b>	
<b>FIG</b>	Kamloops 866-WXBRIEF (Toll free within Canada) or 866-541-4101 (Toll free within Canada & USA)
<b>HELI DATA</b>	FATO 86' x 86' non-supporting TLOF 60' x 60' CONC Safety Area 115' x 115' 17,000 lbs Max heli overall length 57.4' (CAR 602.96). Elevated/rooftop heli.
<b>RCR</b>	Opr
<b>LIGHTING</b>	RY(ME) green LED ARCAL-123.2 type K
<b>COMM</b>	
<b>MF</b>	Penticton rdo 118.5 5NM 4100 ASL (CAR 602.98)
<b>PRO</b>	Arr/dep 335° fr heli (H1), day/night use (CAR 602.96) Arr/dep 078° to 170° fr heli (H1), day/night use (CAR 602.96)

**PENTICTON VFR TERMINAL PROCEDURES CHART**



## BRITISH COLUMBIA

AERODROME / FACILITY DIRECTORY

**PENTICTON VFR TERMINAL PROCEDURES CHART (Cont'd)**

<b>NAME</b>	<b>IDENT</b>	<b>LAT/LONG</b>
KALEDEN	VCKLE	N49° 24' 00" W119° 36' 00"
NARAMATA	VCNAR	N49° 35' 50" W119° 36' 11"
OKANAGAN (OK) FALLS	VCOKN	N49° 20' 33" W119° 34' 08"
PEACHLAND	VCPCH	N49° 46' 00" W119° 43' 59"
SQUALLY PT	VCSQL	N49° 44' 00" W119° 43' 01"
SUMMERLAND	VCSML	N49° 36' 00" W119° 40' 01"
VASEUX LAKE	VCVAS	N49° 17' 00" W119° 31' 59"
CHUTE LAKE	VCCHL	N49° 41' 38" W119° 31' 52"

**PENTICTON VFR TERMINAL PROCEDURES CHART - NIGHT CIRCUIT PROCEDURE**

