
FLIGHT PLAN & SITE SURVEY

K 321-5026 HUB CITY R/C CLUB- RICHARDT FIELD

July 10, 2026



IMPORTANT NOTICE

Please ensure you have received all required authorizations prior to flight. This Site Survey was created using RPAS Wilco. The user accepts all responsibility for the accuracy of the information.

Terms & Conditions: rpaswilco.com/#tnc

Mission Information

K 321-5026 HUB CITY R/C CLUB- RICHARDT FIELD

FLIGHT DETAILS

Reference No:	MAAC-321-5026
Project Name:	HUB CITY R/C CLUB
Pilot Name:	MAAC
Pilot Certificate:	
Mission Type:	VLOS
Flight Start:	July 10, 2026 11:04 AM
Flight End:	July 10, 2026 12:04 PM

LOCATION DETAILS

Flight Address:	RICHARDT FIELD
Latitude:	52° 9' 7.67" N (52.152)
Longitude:	106° 22' 46.69" W (-106.38)
Field Elevation:	1755 ft MSL
Altitude / Radius:	400 ft / 926 m (0.5 nm)
Classification:	UNCONTROLLED
FIR / Contact:	CZWG / 204-983-8338

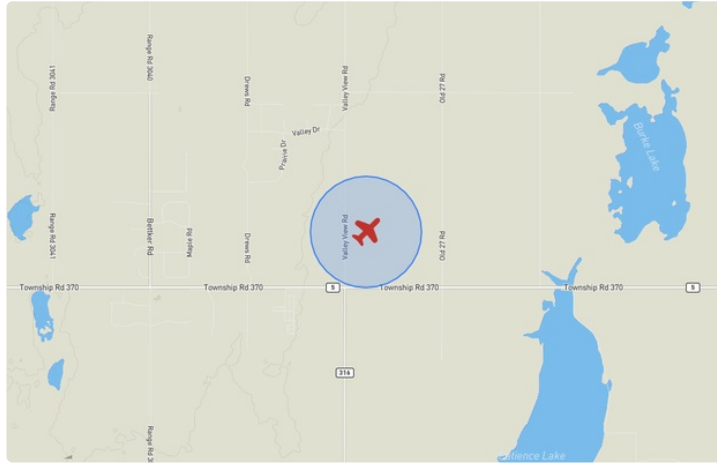
REPORT CONTENTS

Site Survey • Obstacles (if available) • Nearby Aerodromes • Canadian Aviation Regulations • GFA • Aerodrome Supplements • METAR & TAF • NOTAMs • CFS





Flight Map & MODEL Details

MISSION LOCATION SURVEY

FLIGHT AREA MAP



MISSION LOCATION DETAILS

ROLE	LATITUDE	LONGITUDE
 MODEL	52° 9' 7.67" N 52.152	106° 22' 46.69" W -106.38
 Pilot		
 Payload Op.		
 Observer		

Airspace Classification

MISSION LOCATION SURVEY

AIRSPACE MAP



OVERLYING AIRSPACES

Class	Name	Floor	Ceiling
E	Saskatoon/John G. Diefenbaker Intl, SK [TA]	700AGL	18000MSL
E	T755 Fixed RNAV Route	2200AGL	18000MSL

Planned flight altitude is below the lowest documented airspace layer

NEAREST AERODROMES & DISTANCE FROM OPERATION

BANGA AIR (CJN5 - AERODROME - Reg)	Lat: 52.001	Long: -106.463	17.78KM	9.6NM	S
Operator: BANGA INTERNATIONAL AIR LTD: PHONE: 306-612-1227, POST: UNKNOWN FIR Contact: 204-983-8338					
SASKATOON (JIM PATTISON CHILDREN'S HOSPITAL) (CJP4 - HELIPORT - Cert)	Lat: 52.132	Long: -106.643	18.078KM	9.761NM	W
Operator: SASKATCHEWAN HEALTH AUTHORITY: PHONE: 306-655-0683, POST: UNKNOWN FIR Contact: 204-983-8338					
JOHN G. DIEFENBAKER INTL (CYXE - AERODROME - Cert)	Lat: 52.173	Long: -106.7	21.96KM	11.857NM	W
Operator: SASKATOON AIRPORT AUTHORITY: PHONE: 306-975-4013, POST: UNKNOWN FIR Contact: 204-983-8338					

SASKATCHEWAN

AERODROME / FACILITY DIRECTORY

SASKATOON / BANGA AIR SK

CJN5

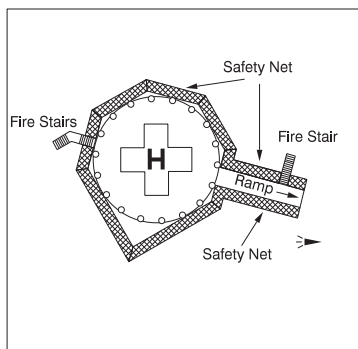
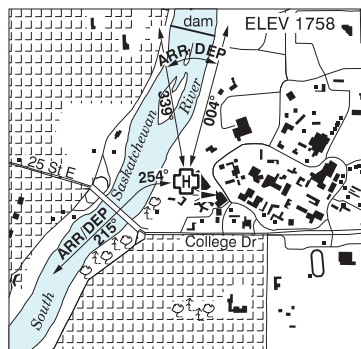
REF	N52 00 02 W106 27 45 10SE 11°E (2012) UTC-6 Elev 1690' A5006 A5015		ELEV 1690
OPR	Banga International Air Ltd 306-612-1227 Reg PPR		
PF	C-1,2,5 D-3,4,6		
FLT PLN	FIC Edmonton 866-WXBRIEF (Toll free within Canada) or 866-541-4102 (Toll free within Canada & USA)		
RWY DATA	Rwy 09(093°)/27(273°) 2600x70 earth Thld 27 displ 200'		
RCR	Opr No win maint		
COMM	ATF tfc 122.8 5NM 4700 ASL		
PRO	Circuit hgt 2400 ASL. Apt in close proximity to Saskatoon Class E airspace, see VNC. For flt info ctc TWR 118.3.		
CAUTION	Extv ultra-light & NORDO acft in vic		

SASKATCHEWAN

AERODROME / FACILITY DIRECTORY

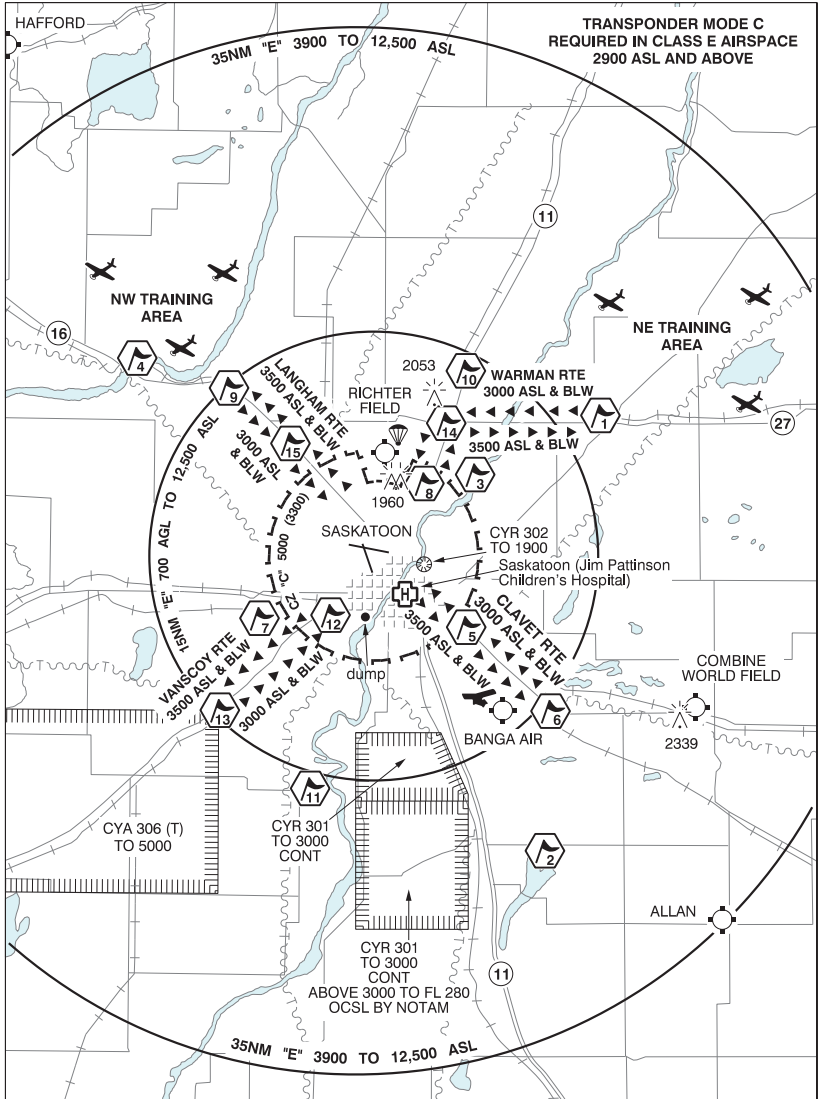
SASKATOON (JIM PATTISON CHILDREN'S HOSPITAL) SK (Heli)

CJP4



REF	N52 07 55 W106 38 33 Adj E 11°E (2013) UTC-6 Elev 1758' A5006 A5015
OPR	Saskatchewan Health Authority 306-655-0683 Cert PPR
PF	A-1,2,4,7,8 C-3,5,6
FLT PLN	
FIG	Edmonton 866-WXBRIEF (Toll free within Canada) or 866-541-4102 (Toll free within Canada & USA)
HELI DATA	FATO 86' dia non-supporting TLOF 57' dia CONC Safety Area 115' dia 17,000 lbs Max heli overall length 57.4'
RCR	Support services 306-844-1601
LIGHTING	RY (LO) yellow LED
COMM	
RADIO	Saskatoon 118.3 PTC avbl (E) 0445-1200Z Mon-Fri Mar 09-Oct 31, 0445-1245Z Sat-Sun Mar 09-Oct 31, 0445-1245Z Nov 1-Mar 8 (emerg only 306-665-4248)
RCO	Edmonton rdo 122.375 (FISE) 126.7 (bcst)
TWR	Saskatoon 118.3 (E) 1200-0445Z Mon-Fri Mar 09-Oct 31, 1245-0445Z Sat-Sun Mar 09-Oct 31, 1245-0445Z Nov 1-Mar 8 (emerg only 306-665-4249)
MF	rdo 118.3 0445-1200Z Mon-Fri Mar 09-Oct 31, 0445-1245Z Sat-Sun Mar 09-Oct 31, 0445-1245Z Nov 1- Mar 8 7NM shape irregular centred on Saskatoon/John G. Diefenbaker Intl A/D 3.2NM NW 5000 ASL (CAR 602.98)
PRO	Arr/dep 339° to 004° fr heli, slope 8% (H3), day/night use. Arr/dep 254° to 215° curved fr heli, slope 8% (H3), day/night use.
CAUTION	Lgtd hosp elevator penthouse aprx 69' W of heli. Lgtd hosp signage on the N bldg wall BLW heli elev.

SASKATOON VFR TERMINAL PROCEDURES CHART



VFR CHECKPOINTS

- | | |
|-----------------|------------------|
| 1 ABERDEEN | 8 ELEVATOR |
| 2 BLACKSTRAP | 9 LANGHAM |
| 3 BLUFFS | 10 OSLER |
| 4 BORDEN BRIDGE | 11 PIKE LAKE |
| 5 COSTCO | 12 RAILYARD |
| 6 CLAVET | 13 VANSKOY |
| 7 CORY MINE | 14 WARMAN |
| | 15 WEIGH STATION |



SASKATCHEWAN

AERODROME / FACILITY DIRECTORY

SASKATOON VFR TERMINAL PROCEDURES CHART (Cont'd)

NAME	IDENT	LAT/LONG
ABERDEEN	VCABD	N52° 19' 33" W106° 17' 12"
BLACKSTRAP	VCBTP	N51° 50' 28" W106° 23' 17"
BLUFFS	VCBFS	N52° 15' 40" W106° 31' 11"
BORDEN BRIDGE	VCBOR	N52° 22' 24" W107° 09' 00"
COSTCO	VCCST	N52° 05' 28" W106° 31' 44"
CLAVET	VCCLT	N51° 59' 51" W106° 22' 38"
CORY MINE	VCCRM	N52° 05' 19" W106° 52' 21"
ELEVATOR	VCEVT	N52° 15' 11" W106° 36' 40"
LANGHAM	VCLGM	N52° 21' 28" W106° 57' 41"
OSLER	VCOSL	N52° 22' 36" W106° 31' 56"
PIKE LAKE	VCPIK	N51° 54' 46" W106° 48' 39"
RAILYARD	VCRLD	N52° 06' 22" W106° 46' 33"
VANSCOY	VCVSY	N52° 00' 02" W106° 58' 27"
WARMAN	VCWMN	N52° 19' 07" W106° 33' 59"
WEIGH STATION	VCWST	N52° 17' 49" W106° 51' 01"

TRAINING AREAS

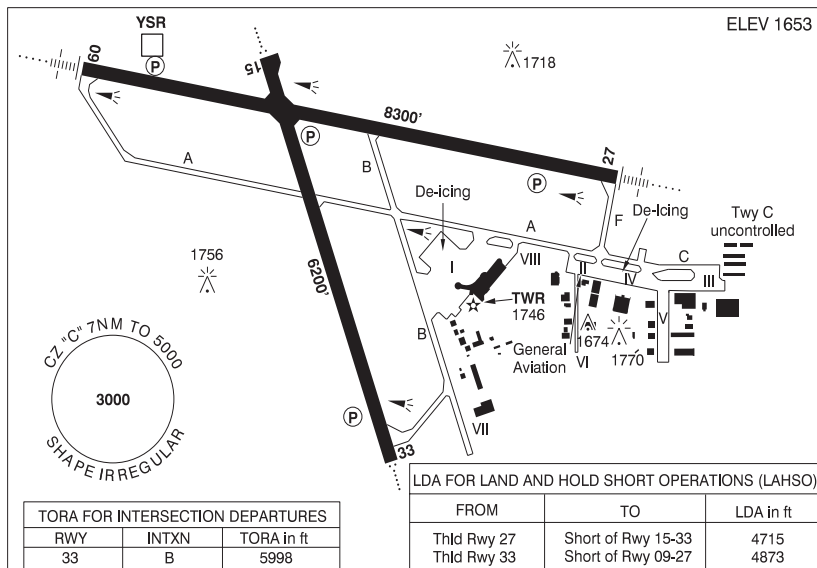
NW Training Area – restricted to area north of Hwy 16 and west of Range Road 3071 (Schulz Rd).
 NE Training Area – restricted to north of Hwy 27 and east of Hwy 785.

SASKATCHEWAN

AERODROME / FACILITY DIRECTORY

SASKATOON / JOHN G. DIFENBAKER INTL SK

CYXE



REF	N52 10 24 W106 41 59 3NW 11°E (2013) UTC-6 Elev 1653' A5006 A5015 LO2 HI3 T1 CAP
OPR	Saskatoon Aprt Authority 306-975-4013 H24 Cert
PF	A-1,2,3,6,7 avbl 1230-0630Z C-4,5
CUST	AOE/200 (300 with staged off-loading) 888-226-7277 14-06Z May 6-Nov 5, 14-06Z Nov 6-Dec 3 O/T O/R, H24 Dec 4-May 5
FLT PLN	<p>FIG Edmonton 866-WXBRIEF (Toll free within Canada) or 866-541-4102 (Toll free within Canada & USA)</p> <p>WX METAR H24. TAF H24, issue times: 00, 06, 12, 18Z.</p> <p>DUAT Saskatoon Aerocentre.</p>
SERVICES	Call out chg may be levied for one or more svcs. <p>FUEL 100LL, JA-1</p> <p>OIL All</p> <p>S 1,2,3,4,5,6</p> <p>ARFF DESIGNATED CAT 6 (CAT 7 30 min PN). Discrete emerg freq 122.675</p> <p>SUP FL LHOX D & A-ice</p> <p>JASU CE16</p> <p>PVT ADV Kreos Aviation/Shell 122.95 12-04Z; Lockhart Aviation/World Fuel 122.85 12-04Z</p> <p>MIL CON Depmar Flight Holdings Inc (Shell) 306-931-8552</p>

SASKATCHEWAN

AERODROME / FACILITY DIRECTORY

SASKATOON / JOHN G. DIEFENBAKER INTL SK (Cont'd)

CYXE

RWY DATA	Rwy 09(090°)/27(270°) 8300x148 ASPH Rwy 15(150°)/33(330°) 6200x148 ASPH RESA: All Rwys 492'
RWY CERT	Rwy 09 RVR 1200(1/4sm)/Rwy 27 RVR 1200(1/4sm) AGN IIIB Rwy 15 RVR 1200(1/4sm)/Rwy 33 RVR 1200(1/4sm) AGN IIIB
TWY	Twy A and Twy C discretionary oversteer reqrd for all acft at intxn of Twy A and Apron II, intxn of Twy A/C and Apron IV, intxn of Twy C and Apron III. Twy C uncontrolled. Twy B adj to Apron I uncontrolled. A310, A330, B757 & B767: 120° turns at intxn Twy B & A proh.
APRON	Prkg Apron I rstd to scheduled & non-scheduled airline tfc. 2 hr PN for gate assignment on Apron I, ctc opr. All other itinerant acft must park on Apron II. Apron VIII rstd to scheduled & non-scheduled airline tfc. 2 hr PN for gate assignment on Apron VIII, ctc opr. No taxiing btwn Apron I and Apron VIII. Apron I, VI, VIII: Heli ops proh. Apron V: Max heli wt 2500lbs.
RCR	Opr or 306-975-4328 CRFI, PCN
LIGHTING	09-AN(TE HI) P3, 27-AN(TE HI) P3, 15-AO(TE HI) P2, 33-AO(TE HI) P2 3.1°. Nominal touchdown pt P2 Rwy 15 aprx 1200' S of thld Rwy 15.
COMM	
RADIO	Saskatoon 118.3 PTC avbl (E) 0445-1200Z Mon-Fri Mar 09-Oct 31, 0445-1245Z Sat-Sun Mar 09-Oct 31, 0445-1245Z Nov 1- Mar 8 (emerg only 306-665-4248)
RCO	Edmonton rdo 122.375 (FISE) 126.7 (bcst)
ATIS	128.4
GND	Saskatoon 121.9 1200-0445Z Mon-Fri Mar 09-Oct 31, 1245-0445Z Sat-Sun Mar 09-Oct 31, 1245-0445Z Nov 1- Mar 8
TWR	Saskatoon 118.3 (E) 1200-0445Z Mon-Fri Mar 09-Oct 31, 1245-0445Z Sat-Sun Mar 09-Oct 31, 1245-0445Z Nov 1- Mar 8 (emerg only 306-665-4249)
MF	rdo 118.3 0445-1200Z Mon-Fri Mar 09-Oct 31, 0445-1245Z Sat-Sun Mar 09-Oct 31, 0445-1245Z Nov 1- Mar 8 7NM shape irregular 5000 ASL (CAR 602.98)
ARR	Winnipeg Ctr 119.9
DEP	Winnipeg Ctr 119.9
PAL	Winnipeg Ctr 134.325
NAV	
DME	SASKATOON YSR 114.7 Ch 94 N52 10 45 W106 42 49 (1673')
ILS	IST 109.9 (Rwy 09) RVR .
PRO	Rgt hand circuits Rwys 15 & 27 (CAR 602.96). VFR ARR/DEP ROUTES: VFR arr/dep routes are intended primarily for tng acft and may be assigned by ATC, as required, for entry to or exit fr the CYXE CZ. See VTPC. Langham VFR Route in close proximity to RNAV Apch Rwy 15. TRAINING AREAS: See VTPC. REDUCED VISIBILITY PROCEDURES (RVR less than 2600 to 1200 ft): See CAP. ATS PPR REQUIREMENTS: Ctc Winnipeg ACC 204-984-5979 for the following; - IFR tng and photo survey within Saskatoon Class E Transponder Airspace HELIPRO: Aprons II, III, IV and V - heli tkof/ldg not auth. Ground and hover taxi only.
CAUTION	Random radiosonde &/or heavy balloon launches aprx 15 NM SW, at abandoned A/D Vanscoy. Ocsl parajump activity within 1NM of Martensville (N52 16 50 W106 41 08, 6.6NM N apt), daylight hrs activated by NOTAM. Max alt 11,600 ASL.