
FLIGHT PLAN & SITE SURVEY

E 496-5076 HESPELER MODEL AVIATORS INC- HESPELER
MEMORIAL ARENA

July 10, 2026



IMPORTANT NOTICE

Please ensure you have received all required authorizations prior to flight. This Site Survey was created using RPAS Wilco. The user accepts all responsibility for the accuracy of the information.

Terms & Conditions: rpswilco.com/#tnc

Mission Information

E 496-5076 HESPELER MODEL AVIATORS INC- HESPELER MEMORIAL ARENA

FLIGHT DETAILS

Reference No:	MAAC-496-5076
Project Name:	HESPELER MODEL AVIATORS INC
Pilot Name:	MAAC
Pilot Certificate:	
Mission Type:	VLOS
Flight Start:	July 10, 2026 01:05 PM
Flight End:	July 10, 2026 02:05 PM

LOCATION DETAILS

Flight Address:	HESPELER MEMORIAL ARENA
Latitude:	43° 25' 39.21" N (43.428)
Longitude:	80° 17' 30.79" W (-80.292)
Field Elevation:	1027 ft MSL
Altitude / Radius:	400 ft / 926 m (0.5 nm)
Classification:	CONTROLLED
FIR / Contact:	CZYZ / 905-676-4509

NOTES

Your flight is in controlled airspace.
If your RPAS is > 250g, please obtain RPAS Flight Authorization using the NavDrone app or by contacting NavCanada. (CARs 901.71)

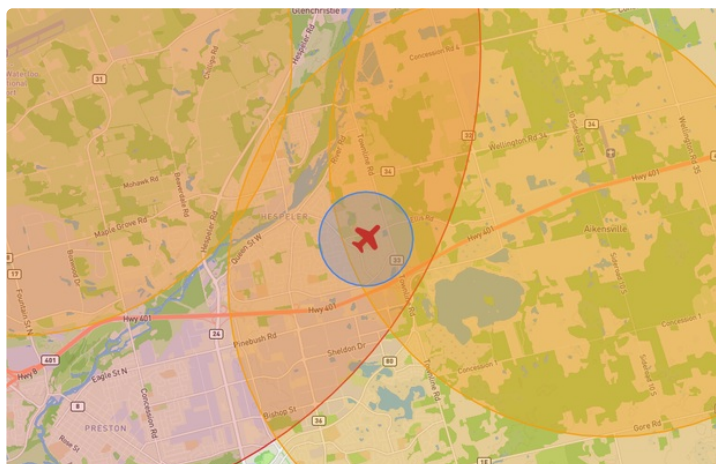
REPORT CONTENTS

Site Survey • Obstacles (if available) • Nearby Aerodromes • Canadian Aviation Regulations • GFA • Aerodrome Supplements • METAR & TAF • NOTAMS • CFS




Flight Map & MODEL Details

MISSION LOCATION SURVEY

FLIGHT AREA MAP



MISSION LOCATION DETAILS

ROLE	LATITUDE	LONGITUDE
 MODEL	43° 25' 39.21" N 43.428	80° 17' 30.79" W -80.292
 Pilot		
 Payload Op.		
 Observer		

Airspace Classification

MISSION LOCATION SURVEY

AIRSPACE MAP



OVERLYING AIRSPACES

Class	Name	Floor	Ceiling
C	Kitchener/Waterloo, ON [CZ]	SFC	4000MSL
E	3.4.1-43 [TA]	700AGL	1800MSL

NEAREST AERODROMES & DISTANCE FROM OPERATION

CAMBRIDGE (PUSLINCH LAKE) (CMB3 - WATERDROME - Reg)	Lat: 43.421	Long: -80.257	2.927KM	1.58NM	E
Operator: RON & YVONNE HARPER; PHONE: 519-496-2240, POST: UNKNOWN FIR Contact: 905-676-4509					
REIDS FIELD (CPE4 - AERODROME - Reg)	Lat: 43.443	Long: -80.232	5.106KM	2.757NM	E
Operator: REIDS HERITAGE HOMES LTD; PHONE: 519-658-6656, POST: UNKNOWN FIR Contact: 905-676-4509					
WATERLOO (CYKF - AERODROME - Reg)	Lat: 43.461	Long: -80.379	7.905KM	4.268NM	NW
Operator: REGIONAL MUNI OF WATERLOO; PHONE: 519-648-2256, POST: UNKNOWN FIR Contact: 905-676-4509					

CANADA WATER AERODROME SUPPLEMENT

Effective 0901Z 19 March 2026 to 0901Z 18 February 2027

B24 AERODROME/FACILITY DIRECTORY

CAMBRIDGE BAY NU

CJD7

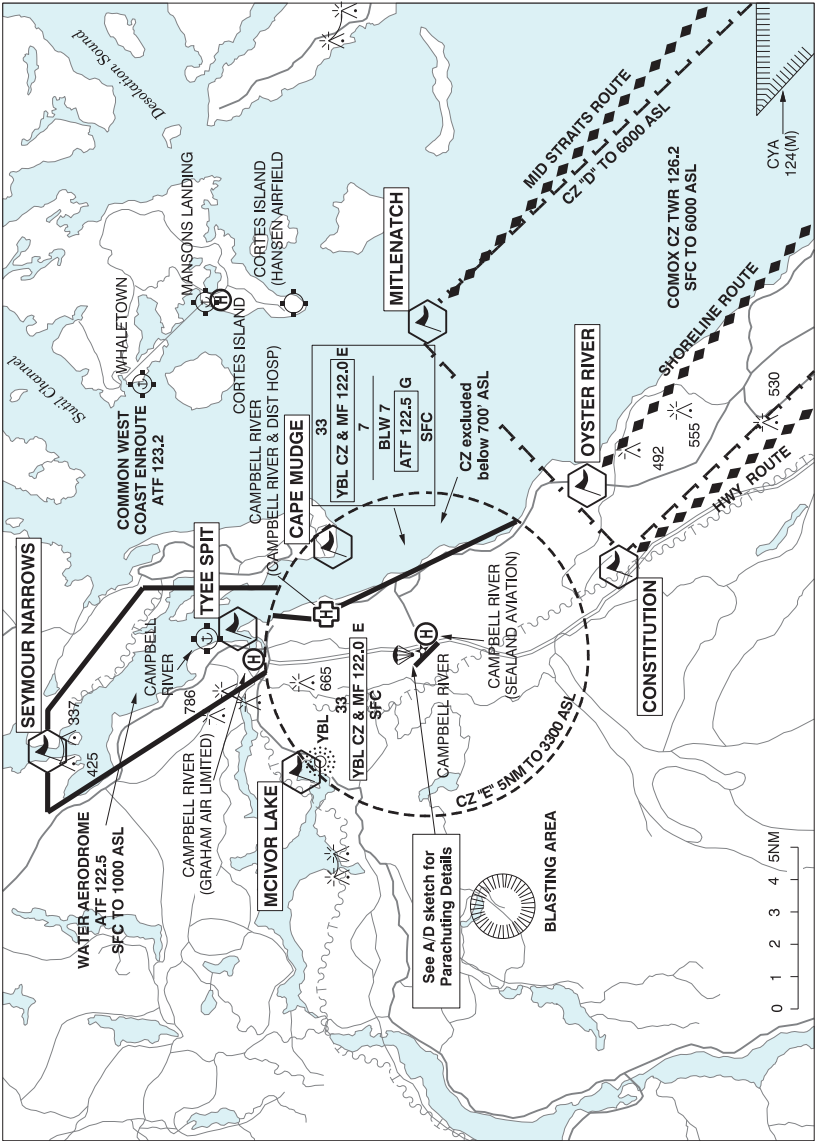
REF	N69 07 20 W105 01 15 7°E (2014) GV119°E 3SW UTC-7(6) Elev 00' A5042 LO5	
OPR	Adlair Aviation 867-983-2569/2247 Reg	
PF	C-1,2,3,4,5	
FLT PLN	FIG Edmonton 866-WXBRIEF (Toll free within Canada) or 866-541-4102 (Toll free within Canada & USA) CARS 867-983-2501 lcl wx only; other wx O/R	
SERVICES	Call out chgs may be levied. FUEL 100(D) Ctc CARS for assistance O/T Kitnuna Petroleum Ltd 867-983-5109/7500 OIL All S 5	
A/D DATA	Open water mid Jul-mid Sep exc drift ice possible in bay til Aug. Tidal range 2', current 1-5 kt, small island in harbour. Exposed shoal NE of dock dur low water levels.	
COMM	RCO Edmonton rdo 123.25 (FISE) 126.7 (bcst) MF aprt rdo 122.1 5NM centred on Cambridge Bay A/D 2.3NM WSW 3100 ASL (CAR 602.98) PAL Edmonton Ctr 134.675 APRT RDO 122.1 at land A/D 2.3NM WSW	
NAV	NDB CB 245 (H) N69 06 49 W105 00 54 VOR/DME YCB 112.7 Ch 74 N69 07 04 W105 10 22 (131') VOR oriented on True North.	
PRO	Do not land on lakes btwn aprt & settlement as water is used for drinking.	
CAUTION	SW wind cause heavy seas. Cable span 0.5NM S of river mouth.	

CAMBRIDGE (PUSLINCH LAKE) ON

CMB3

REF	N43 25 14 W80 15 25 3.5NE 10°W UTC-5(4) Elev 1000' VTA A5000	
OPR	Ron & Yvonne Harper 519-496-2240 Reg PPR	
PF	B-1 C-2,3,4,5,6	
FLT PLN	FIG London 866-WXBRIEF (Toll free within Canada) or 866-541-4104 (Toll Free within Canada & USA)	
SERVICES	S 5, 7	
A/D DATA	Open water Apr-Oct, mud & sand bottom. Docks depth 4'	
COMM	ATF tfc 123.2 5NM 4000 ASL	
CAUTION	Lake is 5.8NM from CYKF. Pilots may ctc YKF twr 126.0 on apch to lake for tfc advsy. Hvy boat tfc on wknds.	

CAMPBELL RIVER VFR TERMINAL PROCEDURES CHART



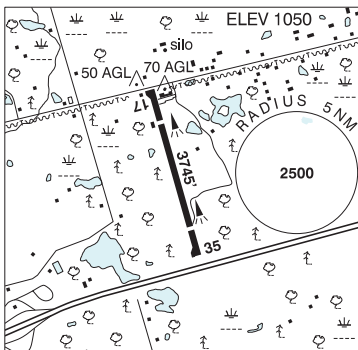
ONTARIO

AERODROME / FACILITY DIRECTORY

CAMBRIDGE / REID'S FIELD ON

CPE4

REF	N43 26 34 W80 13 56 4NE 10°W UTC-5(4) Elev 1050' VTA A5000 LO6
OPR	Reid's Heritage Homes Ltd 519-658-6656 Reg PPR
PF	B-1 C-2,3,4,5,6
FLT PLN	FIC London 866-WXBRIEF (Toll free within Canada) or 866-541-4104 (Toll free within Canada & USA)
RWYDATA	Rwy 17/35 3745x45 asphalt Thld 35 displ 565'. Thld 17 displ 700'. Rwy 17 up 1%.
RCR	Opr Ltd win maint
LIGHTING	17-(TE ME), 35-(TE ME) ARCAL-123.2 type K
COMM	ATF tfc 123.2 5NM 4100 ASL
CAUTION	Anticipate windshear on apch Rwy 35 due trees E of thld Rwy 35. Bldg W of Rwy 17/35 within 150' of rwy centreline. Trees within 100' either side of Rwy 17/35, full length, 80 AGL 1130 ASL. Extv glider activity in area. 24" high aluminum rail along W side of rwy in touchdown zone of Rwy 17.

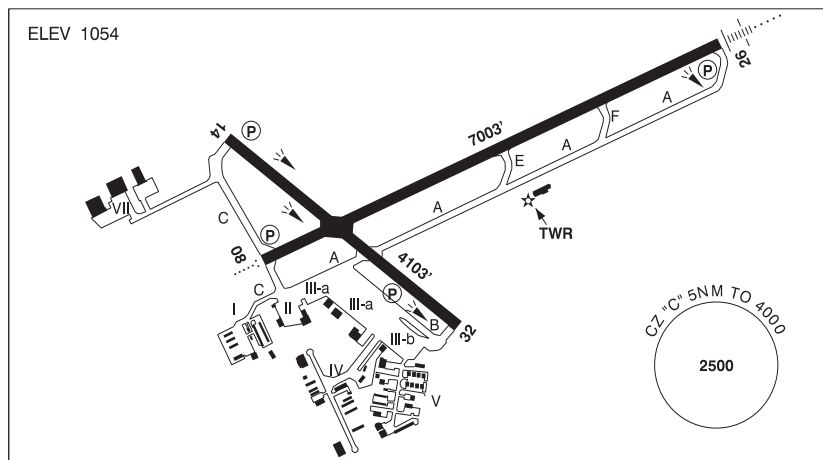


ONTARIO

AERODROME / FACILITY DIRECTORY

KITCHENER / WATERLOO ON

CYKF



REF	N43 27 39 W80 22 43 1E 10°W UTC-5(4) Elev 1054' VTA A5000 LO6 HI5 CAP OC
OPR	Regional Muni of Waterloo 519-648-2256 H24 Cert Ldg fees are applied to all acft above 2500 Kg max tkof wt
PF	A-1,3,6,7,8 B-2 avbl 13-20Z† Mon-Sat C-4,5
CUST	AOE/15 888-226-7277 Gen Avn only AOE/180 12-04Z† 519-648-3858 2hrs PN
FLT PLN	
FIC	London 866-WXBRIEF (Toll free within Canada) or 866-541-4104 (Toll free within Canada & USA)
WX	METAR AUTO H24 (see COMM) WxCam TAF H24, issue times: 0140, 0740, 1340, 1940Z.
SERVICES	
FUEL	100LL, JA (FSII avbl), JA-1 (FSII avbl)
OIL	80, 100
S	1,2,3,4,5,6
ARFF	DESIGNATED CAT 7 for sked pax fit. CAT 7 for non-sked 45 min PN 519-648-3370. PPR for acft 20 seats and abv, exc for diversions or as an altn.
JASU	Air Start
PVT ADV	Chartright 129.475 905-671-4674 ext 125 1100-0130Z† O/T call out chg. Flite Line svc 130.5 519-514-0530 11-01Z† O/T call out chg. Summit Fuel Services 123.5 519-497-8091 12-02Z† O/T call out chg.
MIL CON	Chartright FBO 800-595-9395

ONTARIO

AERODROME / FACILITY DIRECTORY

KITCHENER / WATERLOO ON (Cont'd)

CYKF

RWY DATA	Rwy 14(138°)/32(318°) 4103x148 ASPH Rwy 08(075°)/26(255°) 7003x148 ASPH Rwy 26 down 0.44% RESA: 08 197'; 26 295'
RWY CERT	Rwy 14/32 AGN IIIA Rwy 08 RVR 1200(1/4sm)/Rwy 26 RVR 1200(1/4sm) AGN IIIB
TWY CERT	Twy B AGN IIIA
APRON	Apron I max wingspan 50'. Apron II max wingspan 55'. Turbine acft PPR. Apron IIIA tml apron for air carriers only. Max wingspan 118', larger acft PPR. Apron IIIB GA freight max wingspan 118', larger acft PPR. Apron IV max wingspan 118'. Apron V max wingspan 79'. Apron VII max wingspan 170'.
RCR	Aprt Ops 519-648-3370 CRFI/RSC avbl H24. PCN
LIGHTING	08-AO(TE HI) P2, 14-(TE HI) P1, 26-AN(TE HI) P2, 32-(TE HI) P1 ARCAL-126.0 type K when twr clsd. PAPI Rwy 14, 32 and 26 not avbl on ARCAL, on continuously: low ints at SS minus 30 min to SR minus 30 min, high ints at SR minus 30 min to SS minus 30 min.
COMM	<p>ATIS 125.1 12-04Z‡</p> <p>GND Waterloo 121.8 12-04Z‡</p> <p>TWR Waterloo 126.0 118.55 (V) 12-04Z‡ (emerg only 519-648-3055)</p> <p>MF 126.0 04-12Z‡ 5NM 4000 ASL (CAR 602.98)</p> <p>ARR Toronto Tml 128.275</p> <p>DEP Toronto Tml 128.275</p> <p>PAL Toronto Ctr 128.275</p> <p>AWOS 125.1 04-12Z‡</p>
NAV	<p>DME WATERLOO YWT 115.0 Ch 97 N43 27 31 W80 22 46 (1047')</p> <p>ILS IKF 110.7 (Rwy 26)</p>
PRO	<p>Pursuant to CAR 602.105, the following procedures are in effect. Noise Abatement pro in effect for all acft. See CAP or VTPC. Pilots flying an inst apch pro to Rwy 26 take note: The pro turn overflies Guelph Aprt (circuit hgt 2100 ASL). Pilots flying an inst apch pro to Rwy 26 can anticipate delays and/or restrictions when Rwy 05 & 06R are in use at Toronto/Lester B. Pearson. IFR tng flts are to ctc National Traffic Management Unit (FLOW CTL) 800-268-4831 2 hrs prior to ETD or possible delays. VFR tfc outside CZ watch for apch acft oprg in vic of extended Rwy 26 centreline. VFR dep avoid noise sensitive areas at an operationally safe alt.</p> <p>Pursuant to CAR 602.105, the following procedures are in effect. Rgt hand circuits Rwy 32 (CAR 602.96).</p> <p>No VFR or IFR tng on Rwy 08 btwn 02-12Z‡</p> <p>REDUCED VISIBILITY OPERATING PROCEDURES (RVOP): One acft permitted on manoeuvring area at a time dur RVOP. RVOP avbl 12-04Z‡ only. For VFR ARR/DEP rtes see Kitchener/Waterloo VTPC.</p>
CAUTION	Winch-launched hang gliders, cable to 2000 AGL N43 33 18 W080 31 31 near St. Jacobs aprx 8.5NM NW of A/D.