
FLIGHT PLAN & SITE SURVEY

A 31-5695 AIRDRIE MODELERS AIRCRAFT SOCIETY- The
Church of Jesus Christ of Latter-day Saints Gymnasium

July 10, 2026



IMPORTANT NOTICE

Please ensure you have received all required authorizations prior to flight. This Site Survey was created using RPAS Wilco. The user accepts all responsibility for the accuracy of the information.

Terms & Conditions: rpswilco.com/#tnc

Mission Information

A 31-5695 AIRDRIE MODELERS AIRCRAFT SOCIETY- THE CHURCH OF JESUS CHRIST OF LATTER-DAY SAINTS GYMNASIUM

FLIGHT DETAILS

Reference No:	MAAC-31-5695
Project Name:	AIRDRIE MODELERS AIRCRAFT SOCIETY
Pilot Name:	MAAC
Pilot Certificate:	
Mission Type:	VLOS
Flight Start:	July 10, 2026 11:07 AM
Flight End:	July 10, 2026 12:07 PM

LOCATION DETAILS

Flight Address:	The Church of Jesus Christ of Latter-day Saints Gymnasium
Latitude:	51° 6' 46.33" N (51.113)
Longitude:	114° 11' 11.43" W (-114.187)
Field Elevation:	3806 ft MSL
Altitude / Radius:	400 ft / 926 m (0.5 nm)
Classification:	CONTROLLED
FIR / Contact:	CZEG / 780-890-8397

NOTES

Your flight is in controlled airspace.
If your RPAS is > 250g, please obtain RPAS Flight Authorization using the NavDrone app or by contacting NavCanada. (CARs 901.71)

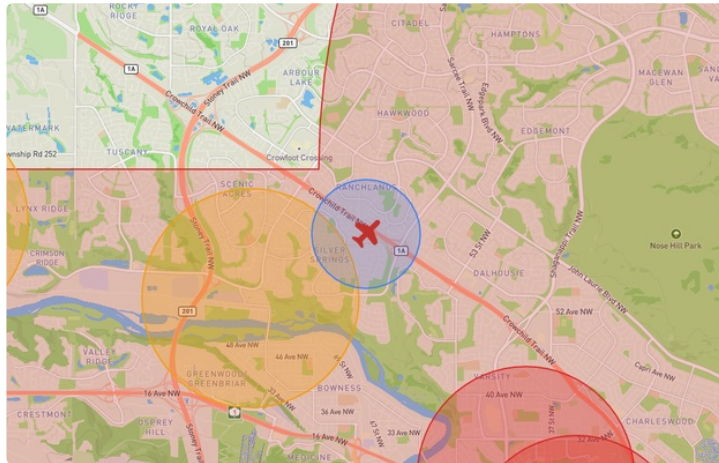
REPORT CONTENTS

Site Survey • Obstacles (if available) • Nearby Aerodromes • Canadian Aviation Regulations • GFA • Aerodrome Supplements • METAR & TAF • NOTAMS • CFS





Flight Map & MODEL Details

MISSION LOCATION SURVEY

FLIGHT AREA MAP



MISSION LOCATION DETAILS

ROLE	LATITUDE	LONGITUDE
 MODEL	51° 6' 46.33" N 51.113	114° 11' 11.43" W -114.187
 Pilot		
 Payload Op.		
 Observer		

Airspace Classification

MISSION LOCATION SURVEY

AIRSPACE MAP



OVERLYING AIRSPACES

Class	Name	Floor	Ceiling
C	Calgary Intl, AB [CZ]	SFC	3000GND
C	Calgary, AB d) [TCA]	4800AGL	18000MSL

NEAREST AERODROMES & DISTANCE FROM OPERATION

CALGARY (BOW CROW) (CEP2 - HELIPORT - Reg)	Lat: 51.103	Long: -114.215	2.252KM	1.216NM	SW
Operator: ALBERTA SUSTAINABLE RESOURCE DEVELOPMENT, FOREST PROTECTION: PHONE: 403-297-8822, PHONE: 403-297-8828, POST: UNKNOWN FIR Contact: 780-890-8397					
CALGARY (ALBERTA CHILDREN'S HOSP) (CAC6 - HELIPORT - Cert)	Lat: 51.076	Long: -114.148	4.938KM	2.666NM	SE
Operator: ALBERTA HEALTH SERVICES: FAX: 403-955-7652, PHONE: 403-955-2965, PHONE: 403-955-7600, POST: 2888 Shaganappi Trail NW Calgary T3B 6A8 FIR Contact: 780-890-8397					
CALGARY (FOOTHILLS HOSP MCCAIG TOWER) (CMT3 - HELIPORT - Cert)	Lat: 51.065	Long: -114.135	6.399KM	3.455NM	SE
Operator: ALBERTA HEALTH SERVICES: PHONE: 403-944-1152, POST: UNKNOWN FIR Contact: 780-890-8397					

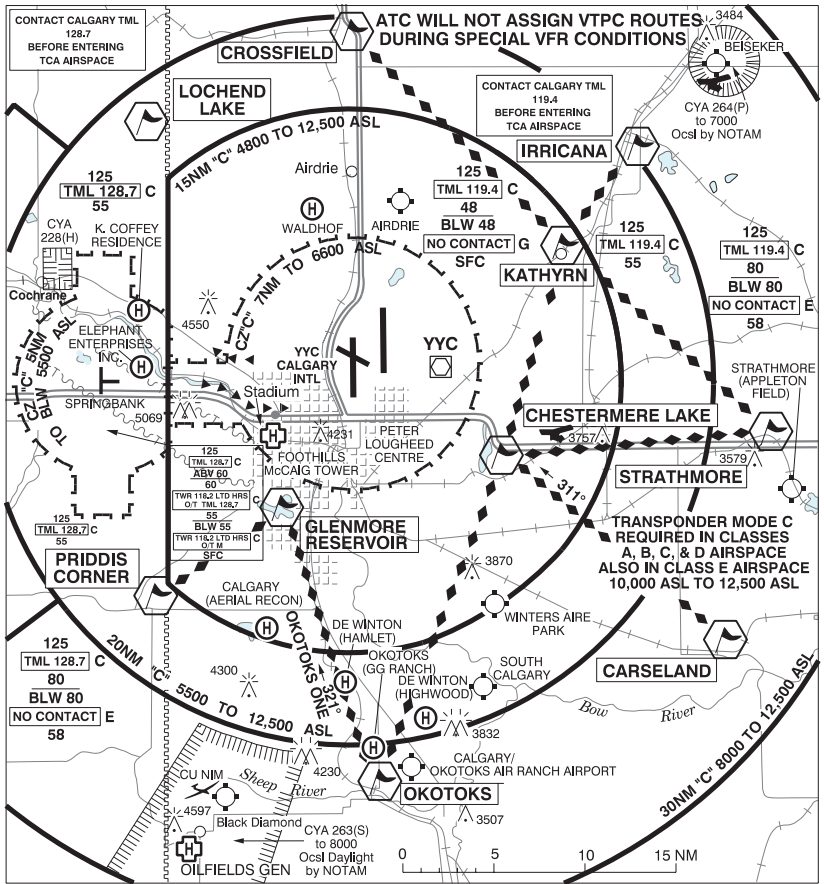
ALBERTA

AERODROME / FACILITY DIRECTORY

CALGARY (BOW CROW) AB (Heli)**CEP2**

REF	N51 06 11 W114 12 54 15°E (2014) UTC-7(6) Elev 3540' VTA A5005	
OPR	Alberta Sustainable Resource Development, Forest Protection Division 403-297-8828/8822 Reg PPR	
PF	C-1,2,3,4,5,6	
FLT PLN		
FIC	Edmonton 866-WXBRIEF (Toll free within Canada) or 866-541-4102 (Toll free within Canada & USA)	
ACC	Edmonton IFR 888-358-7526	
HELI DATA	30' dia 100' dia Max heli overall length 57'	
COMM	Eastbound Calgary VFR ADV 119.4 Westbound Springbank TWR 118.2 Dispatch 122.9 AM (Seasonal)	
PRO	Arr/dep 105° to 252° fr heli, slope 16% (H3).	
CAUTION	P-Lines to N.	

CALGARY VFR TERMINAL PROCEDURES CHART

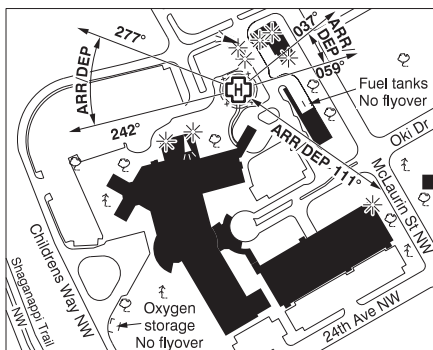
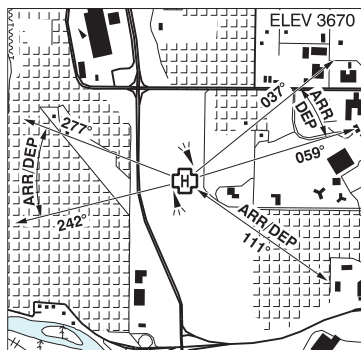


ALBERTA

AERODROME / FACILITY DIRECTORY

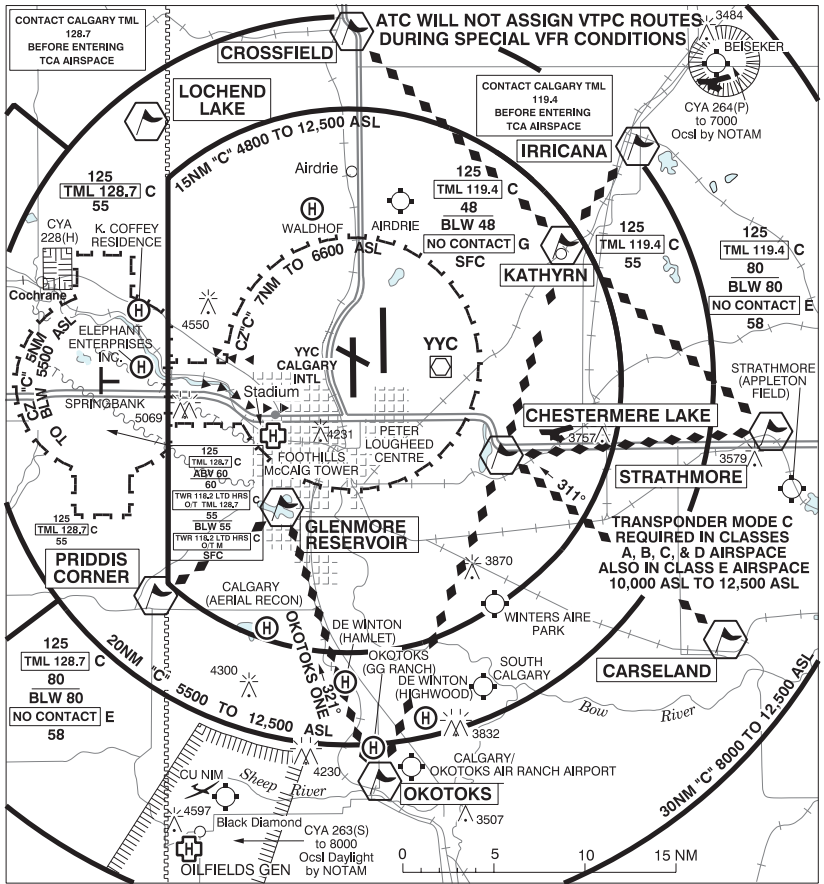
CALGARY (ALBERTA CHILDREN'S HOSP) AB (Heli)

CAC6



REF	N51 04 33 W114 08 52 Adj WNW 14°E (2018) UTC-7(6) Elev 3670' VTA A5005
OPR	Alberta Health Services 403-955-7600 Cert NVIS OPS AUTH PPR
PF	A-1,4 C-2,3,5,6
FLT PLN	
FIC	Edmonton 866-WXBRIEF (Toll free within Canada) or 866-541-4102 (Toll free within Canada & USA)
ACC	Edmonton IFR 888-358-7526
HELI DATA	FATO 86' dia CONC/GRASS TLOF 33' dia CONC Safety Area 115' dia Max heli overall length 57.4' CAR (602.96)
RCR	Opr
LIGHTING	RW(LO) yellow RF(FL) PN
COMM	
VFR ADV	119.4
PRO	Arr/dep 037° to 059° fr heli (H1), 111° fr heli (H1), 242° to 277° fr heli (H1) (CAR 602.96).
CAUTION	Lamp standards 20' AGL all quads. Floodlights activated on req. 4' fence in Safety Area under all flt paths.

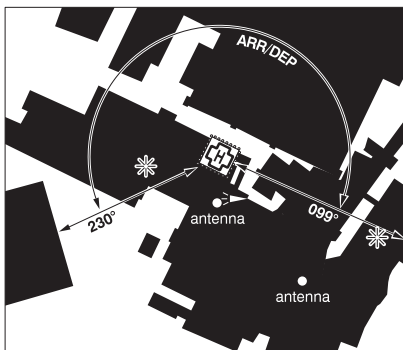
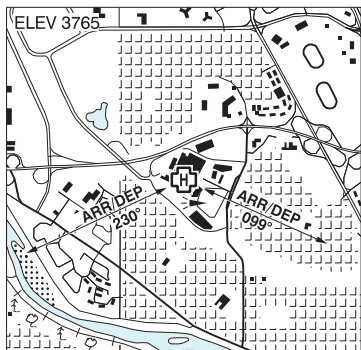
CALGARY VFR TERMINAL PROCEDURES CHART



NAME	IDENT	LAT/LONG
CARCELAND	VCCRL	N50° 51' 15" W113° 28' 00"
CHESTERMERE LAKE	VCCMR	N51° 01' 30" W113° 49' 00"
CROSSFIELD	VCCRF	N51° 26' 00" W114° 02' 00"
GLENMORE RESERVOIR	VCGLM	N50° 59' 00" W114° 07' 30"
IRRICANA	VCIRR	N51° 19' 24" W113° 36' 12"
KATHYRN	VCKTH	N51° 13' 00" W113° 42' 00"
LOCHEND LAKE	VCLEL	N51° 20' 00" W114° 19' 12"
OKOTOKS	VCOKO	N50° 43' 30" W113° 58' 30"
PRIDDIS CORNER	VCPDS	N50° 53' 30" W114° 17' 45"
STRATHMORE	VCSRSM	N51° 02' 30" W113° 23' 30"

CALGARY (FOOTHILLS HOSP McCAIG TOWER) AB (Heli)

CMT3



REF	N51 03 55 W114 08 06 Adj 15°E (2014) UTC-7(6) Elev 3765' VTA A5005
OPR	Alberta Health Services 403-944-1152 Cert NVIS OPS AUTH PPR
FLT PLN	
FIC	Edmonton 866-WXBRIEF (Toll free within Canada) or 866-541-4102 (Toll free within Canada & USA)
HELI DATA	FATO 86' dia rooftop non-supporting TLOF 57' x 57' CONC Safety Area 115' dia Rooftop 17,000 lbs Max heli overall length 57.4' (CAR 602.96)
LIGHTING	RY(LO)
COMM	
VFR ADV	119.4
PRO	Arr/dep 230° to 099° fr heli (H1), day/ngt use (CAR 602.96).

CALGARY VFR TERMINAL PROCEDURES CHART

