

---

# FLIGHT PLAN & SITE SURVEY

---

N 526-5179 CLUB DE VOL A VOILE DE LA MONTERGIE  
(C2VM)- 2 - SAINTE-JULIE GAZONNIERE (TERRAIN  
ALTERNATIF)

July 10, 2026



**IMPORTANT NOTICE**

Please ensure you have received all required authorizations prior to flight. This Site Survey was created using RPAS Wilco. The user accepts all responsibility for the accuracy of the information.

Terms & Conditions: [rpaswilco.com/#tnc](https://rpaswilco.com/#tnc)

# Mission Information

N 526-5179 CLUB DE VOL A VOILE DE LA MONTERGIE (C2VM)- 2 - SAINTE-JULIE GAZONNIERE (TERRAIN ALTERNATIF)

## FLIGHT DETAILS

Reference No:	<b>MAAC-526-5179</b>
Project Name:	<b>CLUB DE VOL A VOILE DE LA MONTERGIE (C2VM)</b>
Pilot Name:	<b>MAAC</b>
Pilot Certificate:	
Mission Type:	<b>VLOS</b>
Flight Start:	<b>July 10, 2026 01:08 PM</b>
Flight End:	<b>July 10, 2026 02:08 PM</b>

## LOCATION DETAILS

Flight Address:	<b>2 - SAINTE-JULIE GAZONNIERE (TERRAIN ALTERNATIF)</b>
Latitude:	<b>45° 36' 56.00" N ( 45.616 )</b>
Longitude:	<b>73° 19' 12.30" W ( -73.32 )</b>
Field Elevation:	<b>128 ft MSL</b>
Altitude / Radius:	<b>400 ft / 926 m ( 0.5 nm )</b>
Classification:	<b>CONTROLLED</b>
FIR / Contact:	<b>CZUL / 514-633-3365</b>

### NOTES

Your flight is in controlled airspace.  
If your RPAS is > 250g, please obtain RPAS Flight Authorization using the NavDrone app or by contacting NavCanada. (CARs 901.71)

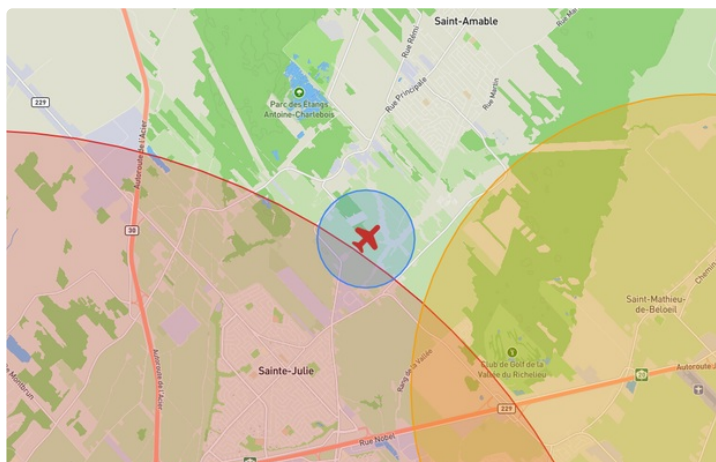
## REPORT CONTENTS

Site Survey • Obstacles (if available) • Nearby Aerodromes • Canadian Aviation Regulations • GFA • Aerodrome Supplements • METAR & TAF • NOTAMS • CFS





# Flight Map & MODEL Details

MISSION LOCATION SURVEY

## FLIGHT AREA MAP



## MISSION LOCATION DETAILS

ROLE	LATITUDE	LONGITUDE
 MODEL	45° 36' 56.00" N 45.616	73° 19' 12.30" W -73.32
 Pilot		
 Payload Op.		
 Observer		

# Airspace Classification

MISSION LOCATION SURVEY

## AIRSPACE MAP



## OVERLYING AIRSPACES

Class	Name	Floor	Ceiling
C	St-Hubert, QC [CZ]	SFC	2000MSL
E	St-Jean, QC [TA]	700AGL	18000MSL

## NEAREST AERODROMES & DISTANCE FROM OPERATION

ST-MATHIEU-DE-BELOEIL (GILLES BEAUDET) (CSB3 - AERODROME - Reg)	Lat: 45.59	Long: -73.238	7.005KM	3.782NM	SE
<b>Operator:</b> MUNICIPALITE DE SAINT-MATHIEU-DE-BELOEIL: PHONE: 450-446-5931, POST: UNKNOWN <b>FIR Contact:</b> 514-633-3365					
MET (AEROPORT METROPOLITAIN DE MONTREAL) (CYHU - AERODROME - Cert)	Lat: 45.518	Long: -73.417	13.206KM	7.131NM	SW
<b>Operator:</b> MET (AEROPORT METROPOLITAIN DE MONTREAL): PHONE: 450-678-6030, POST: UNKNOWN <b>FIR Contact:</b> 514-633-3365					
ST-MATHIAS (CSV9 - WATERDROME - Reg)	Lat: 45.503	Long: -73.252	13.608KM	7.348NM	SE
<b>Operator:</b> AVIATION B.L. INCORPORATED: FAX: 450-658-3982, PHONE: 450-658-2041, POST: 600 CHEMIN DES PATRIOTES, ST-MATHIAS, QUE,POSTAL C <b>FIR Contact:</b> 514-633-3365					

## QUEBEC

## AERODROME / FACILITY DIRECTORY

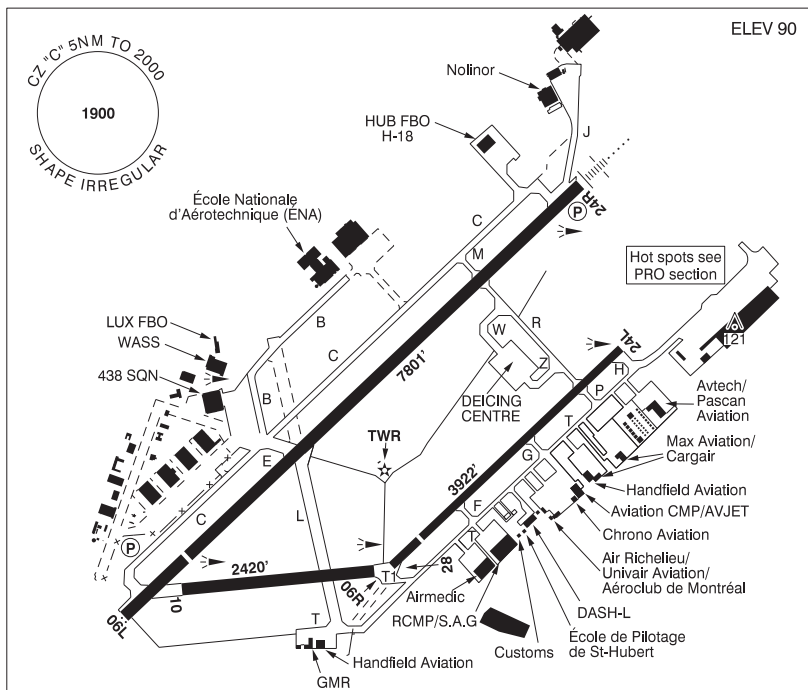
## ST-MATHIEU-DE-BELOEIL (GILLES BEAUDET) QC

CSB3

<b>REF</b>	N45 35 25 W73 14 17 1.5NW 15°W (2014) UTC-5(4) Elev 49' VTA A5002	
<b>OPR</b>	Municipalité de Saint-Mathieu-de-Beloeil 450-446-5931 Reg Ldg fees	
<b>PF</b>	B-7,8 C-3,4,5	
<b>FLT PLN</b>	(bil)	
<b>FIC</b>	Québec 866-GOMÉTÉO or 866-WXBRIEF (Toll free within Canada) or 866-541-4105 (Toll free within Canada & USA)	
<b>ACC</b>	Montréal 514-633-3211 or 800-633-1353, all Flt Plns, IFR tng PPR. Flt Plns by Fax at 514-633-2877 & include phone numbers where pilot can be reached prior to dep. IFR clearance or activation 514-633-3014.	
<b>SERVICES</b>		
<b>FUEL</b>	100LL (Corp. Aéroport SMB. Members only.) For visitors PPR Mon-Fri, ltd hrs	
<b>OIL</b>	All	
<b>S</b>	1,2,3,4,5	
<b>PVT ADV</b>	Aviamax 450-446-2570; Helico SB3 450-536-0880; Vortex Aviation 450-446-7400	
<b>RWY DATA</b>	Rwy 15(150°)/33(330°) 2581x50 ASPH Thld 15 displ 203' Thld 33 displ 178' Opr Ltd win maint	
<b>LIGHTING</b>	15-(TE ME), 33-(TE ME) ARCAL-122.7 type K	
<b>COMM</b>	(bil)	
<b>ATF</b>	tfc 122.7 5NM outside CYHU CZ 2000 ASL	
<b>PRO</b>	<b>Circuits:</b> All circuits not to exceed 1000 ASL. Touch/go for helicopters are not auth on Rwy 15. Touch/go for all aircraft are not auth btwn 03-13Z‡ <b>Circuit Rwy 33:</b> Climb on rwy centreline to 1000 ASL before turning for circuits or BPOC. <b>Airspace:</b> CYA 627(S) aprx 12NM NE of A/D up to 3000 ASL, cont daylight. <b>Training areas:</b> See Montréal Terminal VTPC. Broadcast ground position and movement intentions. Pilots are requested to avoid flight below 2000 AGL when flying over the Mont-Saint-Hilaire Migratory Bird Sanctuary (Saint-Hilaire, QC N45 33 00 W73 09 00).	
<b>CAUTION</b>	Twy B easily confused with Rwy 15/33. Possible win maint eqpt on rwy. <b>CYHU instrument apch:</b> Acft flying at Montréal/Met (Aéroport Métropolitain de Montréal) aprt (9NM WSW of Beloeil A/D Rwy 24R instrument apch may overfly Beloeil A/D at 2100 ASL.) <b>Circuits:</b> Rwy 15 tfc ptn, twr less than 1NM NE of A/D, 331 ASL. Rwy 33 tfc ptn, twr at 1NM SSW of A/D, 240 ASL.	

**MONTREAL / MET (AÉROPORT MÉTROPOLITAIN DE MONTRÉAL) QC**

**CYHU**



<b>REF</b>	N45 31 05 W73 25 01 3E 15°W (2010) UTC-5(4) Elev 90' VTA A5002 LO6 LO7 LO8 HI5 T2 CAP
<b>OPR</b>	MET (Aéroport métropolitain de Montréal) 450-678-6030 Cert Ldg fees
<b>PF</b>	B-1,2,3,6 C-4,5
<b>CUST</b>	AOE/15 888-226-7277 1330-0300Z± Mon-Fri exc hols
<b>FLT PLN</b>	(bil) <b>FIG</b> Québec 866-GOMÉTÉO or 866-WXBRIEF (Toll free within Canada) or 866-541-4105 (Toll free within Canada & USA) <b>ACC</b> Montréal 514-633-3211 or 800-633-1353. All Fit Plns, IFR tng fits PPR. Fit Plns by Fax at 514-633-2877 & include phone numbers where pilot can be reached prior to dep. <b>WX</b> METAR AUTO H24 (see COMM) TAF H24, issue times: 00, 06, 12, 18Z. WxCam

## QUEBEC

## AERODROME / FACILITY DIRECTORY

MONTRÉAL / MET (AÉROPORT MÉTROPOLITAIN DE MONTRÉAL) QC (Cont'd) CYHU

## SERVICES

<b>FUEL</b>	100LL, JA-1 (FSII avbl), JP-4 F-34
<b>OIL</b>	All (Mil 123, 128, 133, 148, 156)
<b>S</b>	1 (ltd), 2,4,5,7
<b>SUP FL</b>	D & A-Ice, LHOX 13-21Z† Tue-Fri exc hols
<b>JASU</b>	Mil CE15, 16, CA2
<b>MIL ADV</b>	438 Sqn Ops - Call "WILDCAT OPS" 322.1 135.9 450-462-8777 ext 7216 CSN 472-7216 13-21Z† Mon-Fri. Ltd trans svcg. 24 hrs PN.
<b>PVT ADV</b>	AvJet Distribution 123.025 450-678-4440; Pascan 131.17 888-313-8777, 450-443-0500; HUB FBO H-18 122.8 450-468-4400; LUX FBO 122.470 514-312-1885
<b>MIL CON</b>	Avjet Holding Inc 450-678-4440

## RWY DATA

Rwy 06L(062°)/24R(242°) 7801x150 ASPH Thld 06L displ 1105'.  
 Rwy 06R(062°)/24L(242°) 3922x100 ASPH Thld 06R displ 463'.  
 Rwy 10(100°)/28(280°) 2420x150 ASPH

## RWY CERT

Rwy 06L/24R AGN IIIB  
 Rwy 06R/24L AGN IIIA  
 Rwy 10/28 AGN II

## TWY CERT

Twy: F, G, H, J, K AGN IIIA  
 Twy: P, T, T1, W, Z AGN IIIB

## TWY

Twy B: First 500' fm ENA uncontrolled.

## RCR

Opr 1200-2030Z† Mon-Fri Apr 21-Nov 19; 0330-2030Z† Mon-Fri Nov 20-Apr 20, AMSCR/CRFI O/T 1hr PN 514-214-8573, win maint O/T 3hrs PN 514-214-8573, call out chg. Rwy 06R/24L clsd 0400-1045Z† Mon-Fri, 0100-1045Z† Sat-Sun Nov 20-Apr 15; avbl as twy btwn Twy P and Twy R. PCN.

## MIL

S50, T75, ST140, TT198.

## LIGHTING

06R-(TE ME), 24L-(TE ME), 06L-AS(TE HI) P2, 24R-AN(TE HI) P2, 10-(TE HI), 28-(TE HI) ARCAL-118.4 type K for Rwy 06L/24R, PAPI & twy lgt B, C, E, J, K, M, P, R, T

## COMM

(bil)

## RCO

Rouyn rdo 118.4 (RAAS) 0500-1045Z† Tue-Sat, 0300-1045Z† Sun-Mon Apr-Oct; 0400-1045Z† Tue-Sat, 0100-1045Z† Sun-Mon Nov-Mar

## ATIS

(English) 124.9 (French) 124.1 1045-0500Z† Mon-Fri, 1045-0300Z† Sat-Sun Apr-Oct; 1045-0400Z† Mon-Fri, 1045-0100Z† Sat-Sun Nov-Mar

## GND

St-Hubert 126.4 1045-0500Z† Mon-Fri, 1045-0300Z† Sat-Sun Apr-Oct; 1045-0400Z† Mon-Fri, 1045-0100Z† Sat-Sun Nov-Mar

## TWR

St-Hubert 118.4 (VFR ARR North) 121.3 (VFR ARR South and East) (V) 1045-0500Z† Mon-Fri, 1045-0300Z† Sat-Sun Apr-Oct; 1045-0400Z† Mon-Fri, 1045-0100Z† Sat-Sun Nov-Mar (emerg only 450-926-6458)

## MF

Rouyn rdo 118.4 0500-1045Z† Tue-Sat, 0300-1045Z† Sun-Mon Apr-Oct; 0400-1045Z† Tue-Sat, 0100-1045Z† Sun-Mon Nov-Mar 5NM shape irregular 2000 ASL (CAR 602.98)

## ARR

Montréal 125.15 268.3

## DEP

Montréal 125.15 268.3

## VFR ADV

Montreal Tml 125.15

## MIL

438 Sqn Ops 322.1 135.9

## AWOS

124.9 (English) 124.1 (French) 0500-1045Z† Tue-Sat, 0300-1045Z† Sun-Mon Apr-Oct; 0400-1045Z† Tue-Sat, 0100-1045Z† Sun-Mon Nov-Mar

## NAV

## DME

IHU 111.1 Ch 48 N45 31 21 W73 24 30 (113')

## ILS

IHU 111.1 (Rwy 24R) RVR

## QUEBEC

## AERODROME / FACILITY DIRECTORY

## MONTRÉAL / MET (AÉROPORT MÉTROPOLITAIN DE MONTRÉAL) QC (Cont'd)

CYHU

## PRO

Pilots should refer to Canadian Airport Charts (CAC) to obtain details on established hot spots, prior to operating on maneuvering areas. CAC are available for free on the NAV CANADA website.

Pilots are requested to avoid flight below 2000 AGL when flying over the Mont-Saint-Hilaire Migratory Bird Sanctuary (Saint-Hilaire, QC N45 33 00 W73 09 00)

**Circuits:** Rgt hand circuits Rwy 06R, 24R & 28 (CAR 602.96).

**Preferential rwy:** Btwn 04-12Z†, all acft shall, when aprt and wx conditions permitting, land on Rwy 24R and take-off Rwy 06L.

**Departure:** 24L rstd to single engine acft having a GTOW of less than 5000 lbs.

Rwy 24L and 24R climb rwy hdg to 1100 ASL BPOC or in the circuit.

All VFR acft leaving the CZ, climb to not above 1100 ASL or as assigned by ATC.

**VFR Codes:** Refer to MONTRÉAL VTPC section VFR FLIGHTS IN MONTRÉAL/TRUDEAU, MONTRÉAL/MET (AÉROPORT MÉTROPOLITAIN DE MONTRÉAL), MONTRÉAL (MIRABEL) AND MONTRÉAL TERMINAL CLASS C AIRSPACE.

**VFR acft towards Montréal/Trudeau:** Outside TWR oprg hours, VFR acft proceeding towards Montreal CZ are required to proceed via Lafontaine Tunnel at 2000 ASL or lower if necessary due wx.

**Mil ramp:** PPR 48 hrs 438 Sqn Ops CSN 472-7216.

**Airspace:** Standardized use of common freq 122.1 (north) and 122.575 (south) in Class G airspace around the CZ. CYA 627(S) aprx 20NM NE of aprt up to 3000 ASL cont daylight.

**Training:** VFR circuits PPR 1-800-633-1353

**Training areas:** See Montréal Terminal VTPC.

### MONTRÉAL/MET (AÉROPORT MÉTROPOLITAIN DE MONTRÉAL) CZ AIRSPACE SPLIT FOR VFR FLIGHTS

During the hours of operation of the control tower, CYHU CZ is divided into two sectors for VFR arrivals with separate frequencies:

- All VFR arrivals from VARENNES QUARRY ctc St-Hubert TWR on 118.4 (ARR VFR North).

- All VFR arrivals from CHAMBLY and ST-PHILIPPE ctc St-Hubert TWR on 121.3 (ARR VFR South and East).

### VFR ARR/DEP ROUTES

All VFR aircraft should follow arrival and departure routes, unless otherwise specified by ATC.

See "VFR TERMINAL PROCEDURES CHART - ARR/DEP" for additional details.

**CIV HELI** Ctc Gnd 126.4 prior to dep. Dep & arr req Marina, Tunnel, North or Tower rtes or as cleared by ATC. See HELI VTPC for rtes & alts.

**MIL HELI** Ctc Gnd 126.4 prior to dep. Holding bay Rwy 06L designated as ldg/tkof pad. See HELI VTPC or rtes & alts.

**NOISE** **Touch and go:** Pursuant to CAR 602.105, the following noise control requirements apply at Montreal/Met (Aéroport Métropolitain de Montréal) airport. Rwy 24L & 24R not auth Oct 1-Apr 30 24-08 hr lcl Mon-Fri, 19-08 hr lcl Sat-Sun. Rwy 24L & 24R not auth May 1-Sep 30 23-08 hr lcl Mon-Fri, 15-08 hr lcl Sat, Nil Sun & hol(s). Noise oprg restrictions & noise abatement procedures in effect. See CAP.

## CAUTION

**Blasting ops:** 9.5NM NE.

**Beloeil A/D:** lctd 8NM NE of Rwy 24. (Circuits ht 1000 ASL).

**Taxiway:** Due to aprt layout twy "T" may be mistaken for Rwy 24L.

Firing range: lctd 4.9NM NE of Rwy 24.

**Mil Ramp:** Large mag anomaly in front of the 438 Sqn hg causing mag compasses to deviate as much as 90°.

# CANADA WATER AERODROME SUPPLEMENT

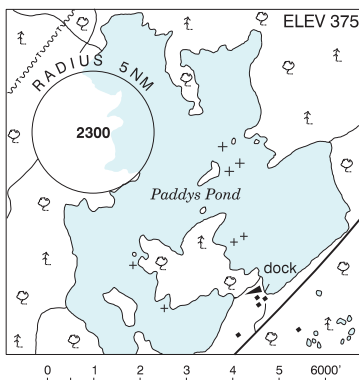
Effective 0901Z 19 March 2026 to 0901Z 18 February 2027

## B222 AERODROME/FACILITY DIRECTORY

### ST. JOHN'S (PADDYS POND) NL

CCQ5

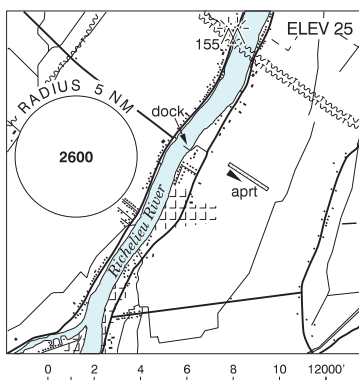
<b>REF</b>	N47 28 W52 54 5SW 19°W (2013) UTC-3½(2½) Elev 375' A5012
<b>OPR</b>	Avalon Float Plane Association 709-364-2855/690-9486 Reg
<b>PF</b>	C-1,2,3 D-4,5,6
<b>FLT PLN</b>	
<b>FIC</b>	London 866-WXBRIEF (Toll free within Canada) or 866-541-4104 (Toll free within Canada & USA)
<b>ACC</b>	(IFR only) Gander 709-651-5225 or 888-751-5225.
<b>SERVICES</b>	
<b>FUEL</b>	100LL PN 1day
<b>S</b>	5
<b>A/D DATA</b>	Open water May-Nov. Ramps & moorings.
<b>COMM</b>	
<b>RCO</b>	London rdo 123.275 (FISE) 126.7 (bcst)
<b>ATF</b>	tfc 123.2 5NM 3400 ASL excluding St. John's Intl CZ
<b>NAV</b>	
<b>VOR/DME</b>	TORBAY YYT 113.5 Ch 82 N47 29 07 W52 51 08 (839')
<b>PRO</b>	Bcst/monitor 123.2 when taxiing.
<b>CAUTION</b>	Strong easterly winds in main pond area. Many shoal areas.



### ST-MATHIAS QC

CSV9

<b>REF</b>	N45 30 10 W73 15 08 1N 15°W (2014) UTC-5(4) Elev 25' VTA A5002
<b>OPR</b>	Avn B.L. Inc 450-658-2041 Fax 450-658-3982 Reg
<b>PF</b>	B-1 13-22Z± C-2,3,4,5,6 at adj land A/D
<b>FLT PLN</b>	
<b>FIC</b>	(bil) Québec 866-GOMÉTÉO or 866-WXBRIEF (Toll free within Canada) or 866-541-4105 (Toll free within Canada & USA)
<b>SERVICES</b>	
<b>FUEL</b>	100LL
<b>OIL</b>	W100, 15W50, 20W50, 25W60
<b>S</b>	1,2,3,4,5
<b>A/D DATA</b>	Open water mid Apr-Nov. Depth 4', mud bottom. Asphalt ramps.
<b>COMM</b>	
<b>ATF</b>	tfc 123.2 5NM below 2000 ASL outside CYHU CZ
<b>PRO</b>	Training Areas: See Montréal Terminal VTTC. Pilots are requested to avoid flight below 2000 AGL when flying over the Mont-Saint-Hilaire Migratory Bird Sanctuary (Saint-Hilaire, QC N45 33 00 W73 09 00).
<b>CAUTION</b>	P-lines 155 AGL 0.75NM NE of dock.



# CANADA WATER AERODROME SUPPLEMENT

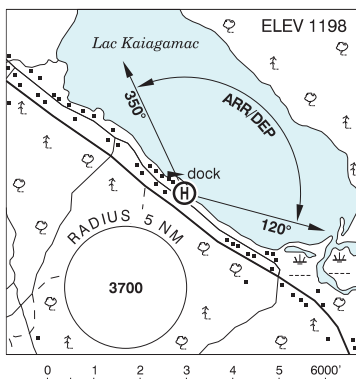
Effective 0901Z 19 March 2026 to 0901Z 18 February 2027

AERODROME/FACILITY DIRECTORY B223

## ST-MICHEL-DES-SAINTS / LAC KAIAGAMAC QC

CLK4

<b>REF</b>	N46 39 04 W73 53 39 1.7SSE 15°W (2016) UTC-5(4) Elev 1198' A5002
<b>OPR</b>	Rock Martel 514-473-3005 Reg PPR
<b>PF</b>	C-1,2,3,4,5
<b>FLT PLN</b>	(bil) <b>FIC</b> Québec 866-GOMÉTÉO or 866-WXBRIEF (Toll free within Canada) or 866-541-4105 (Toll free within Canada & USA)
<b>HELI DATA</b>	FATO/TLOF 35' x 35' ASPH Safety Area 60' x 50' Max heli overall length 38.6'
<b>RCR</b>	Opr
<b>A/D DATA</b>	Open water May-Oct. Mud bottom.
<b>COMM</b>	<b>ATF</b> tfc 123.2 5NM 4200 ASL
<b>PRO</b>	Flt over boats and seaplanes proh. Arr/dep 350° to 120° fr heli.
<b>CAUTION</b>	Land A/D 4.5 NM NW. Water A/Ds adj NE, and 2.3NM N.



## ST-MICHEL-DES-SAINTS / PORT SAINT MICHEL QC

CMS3

<b>REF</b>	N46 41 24 W73 53 55 3W 15°W (2014) UTC-5(4) Elev 1180' A5002
<b>OPR</b>	Port Saint Michel 514-953-2833, 514-557-7223 Reg
<b>PF</b>	C-1,2,3,4,5,6
<b>FLT PLN</b>	(bil) <b>FIC</b> Québec 866-GOMÉTÉO or 866-WXBRIEF (Toll free within Canada) or 866-541-4105 (Toll free within Canada & USA)
<b>SERVICES</b>	PN mid-May to mid-Oct Opr
<b>FUEL</b>	100LL
<b>OIL</b>	All
<b>S</b>	4,5,6
<b>A/D DATA</b>	Open water May-Nov. Sand bottom. Dock depth 20'.
<b>COMM</b>	<b>ATF</b> tfc 123.2 5NM 4200 ASL
<b>CAUTION</b>	Land A/D 4NM W. Common freq. Lgtd antennas 1NM S of A/D.

