

---

# FLIGHT PLAN & SITE SURVEY

---

C 53-5589 BULKLEY VALLEY R/C FLYERS- Muheim Memorial  
School

July 10, 2026



**IMPORTANT NOTICE**

Please ensure you have received all required authorizations prior to flight. This Site Survey was created using RPAS Wilco. The user accepts all responsibility for the accuracy of the information.

Terms & Conditions: [rpswilco.com/#tnc](https://rpswilco.com/#tnc)

# Mission Information

C 53-5589 BULKLEY VALLEY R/C FLYERS- MUHEIM MEMORIAL SCHOOL

## FLIGHT DETAILS

Reference No:	<b>MAAC-53-5589</b>
Project Name:	<b>BULKLEY VALLEY R/C FLYERS</b>
Pilot Name:	<b>MAAC</b>
Pilot Certificate:	
Mission Type:	<b>VLOS</b>
Flight Start:	<b>July 10, 2026 10:08 AM</b>
Flight End:	<b>July 10, 2026 11:08 AM</b>

## LOCATION DETAILS

Flight Address:	<b>Muheim Memorial School</b>
Latitude:	<b>54° 46' 43.51" N ( 54.779 )</b>
Longitude:	<b>127° 10' 4.35" W ( -127.168 )</b>
Field Elevation:	<b>1621 ft MSL</b>
Altitude / Radius:	<b>400 ft / 926 m ( 0.5 nm )</b>
Classification:	<b>CONTROLLED</b>
FIR / Contact:	<b>CZVR / 604-586-4500</b>

### NOTES

Your flight is in controlled airspace.  
If your RPAS is > 250g, please obtain RPAS Flight Authorization using the NavDrone app or by contacting NavCanada. (CARs 901.71)

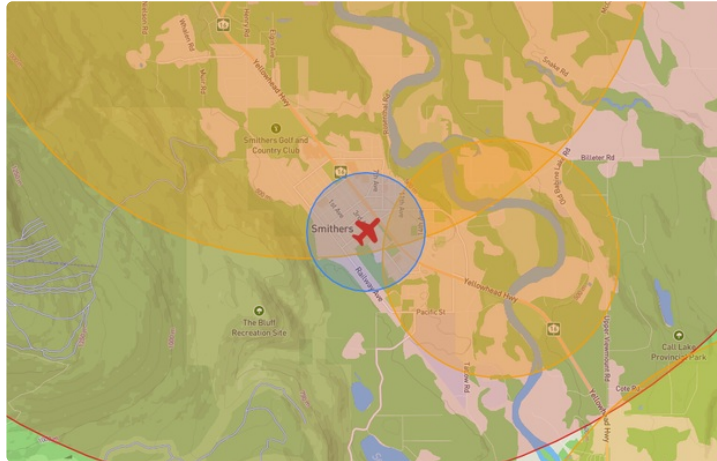
## REPORT CONTENTS

Site Survey • Obstacles (if available) • Nearby Aerodromes • Canadian Aviation Regulations • GFA • Aerodrome Supplements • METAR & TAF • NOTAMs • CFS





# Flight Map & MODEL Details

MISSION LOCATION SURVEY

## FLIGHT AREA MAP



## MISSION LOCATION DETAILS

ROLE	LATITUDE	LONGITUDE
 MODEL	54° 46' 43.51" N 54.779	127° 10' 4.35" W -127.168
 Pilot		
 Payload Op.		
 Observer		

# Airspace Classification

MISSION LOCATION SURVEY

## AIRSPACE MAP



## OVERLYING AIRSPACES

Class	Name	Floor	Ceiling
E	Smithers, BC [CZ]	SFC	3000GND
E	Smithers, BC [TA]	700AGL	18000MSL

## NEAREST AERODROMES & DISTANCE FROM OPERATION

SMITHERS (CYVD - AERODROME - Reg)	Lat: 54.825	Long: -127.183	5.261KM	2.841NM	N
<b>Operator:</b> SMITHERS REGIONAL AIRPORT: FAX: 250-847-2605, PHONE: 250-847-0534, PHONE: 250-847-3664, PHONE: 250-877-1858, POST: UNKNOWN <b>FIR Contact:</b> 604-586-4500					
SMITHERS (CANADIAN) (CAA6 - HELIPORT - Reg)	Lat: 54.775	Long: -127.135	2.149KM	1.16NM	E
<b>Operator:</b> CANADIAN HELICOPTERS LTD: PHONE: 250-847-9444, POST: UNKNOWN <b>FIR Contact:</b> 604-586-4500					
TYHEE LAKE (CAX8 - WATERDROME - Reg)	Lat: 54.717	Long: -127.05	10.242KM	5.53NM	SE
<b>Operator:</b> ALPINE LAKES AIR: PHONE: 250-846-9488, POST: UNKNOWN <b>FIR Contact:</b> 604-586-4500					

## BRITISH COLUMBIA

## AERODROME / FACILITY DIRECTORY

## SMITHERS BC

CY9D



<b>REF</b>	N54 49 31 W127 10 58 2N 17°E (2024) UTC-8(7) Elev 1717' A5013 LO1 HI2 HI3 CAP
<b>OPR</b>	Smithers Regional Airport 250-847-3664/0534 O/T 250-877-1858 Fax 250-847-2605 Cert 1500-0100Z‡ Apr-Oct 1500-0330Z‡ Nov-Mar
<b>PF</b>	A-1,2(ltd hrs),3,6 C-2,4,5
<b>FLT PLN</b>	<p><b>FIG</b> Kamloops 866-WXBRIEF (Toll free within Canada) or 866-541-4101 (Toll free within Canada &amp; USA)</p> <p><b>WX</b> METAR 15-04Z‡ Oct 1-May 31 14-06Z‡ Jun 1-Sep 30 O/T METAR AUTO (see COMM). TAF 14-06Z, issue times: 14, 19, 01Z. WxCam</p>
<b>SERVICES</b>	Call out chg may be levied for one or more svcs
<b>FUEL</b>	100LL, JA-1 (FSII avbl), SP (JA-1 only) 250-847-3414 or 643-1755
<b>OIL</b>	W100 Aeroshell
<b>S</b>	1,2,3,4,5 (ltd), 6 (ltd)
<b>SUP FL</b>	D-ice, HPOX (ltd) (DJ Airside 250-877-1084)
<b>JASU</b>	Elect 28V up to 1500 amps (DJ Airside 250-877-1084)
<b>PVT ADV</b>	Shell Smithers 122.9
<b>RWY DATA</b>	Rwy 15(153°)/33(333°) 7547x150 ASPH Thld 15 displ 260' Thld 33 displ 264'
<b>RWY CERT</b>	Rwy 15/33 AGN IV
<b>TWY CERT</b>	Twy: A, B AGN IIIA
<b>TWY</b>	Twy B no vehicle control.
<b>RCR</b>	Opr Ltd win maint Nov-Mar, ctc opr for hrs of ops O/T 3 hrs PN call out chg may be levied. CRFI, PCN
<b>LIGHTING</b>	15-AO(TE ME) P2, 33-AO(non-std 1411') (TE ME) P2 PAPI limitation/restriction. PAPI Rwy 15 to be used only within 2NM of thld; PAPI Rwy 33 to be used only within 2NM of thld ARCAL-122.3 type K when FSS clsd

## BRITISH COLUMBIA

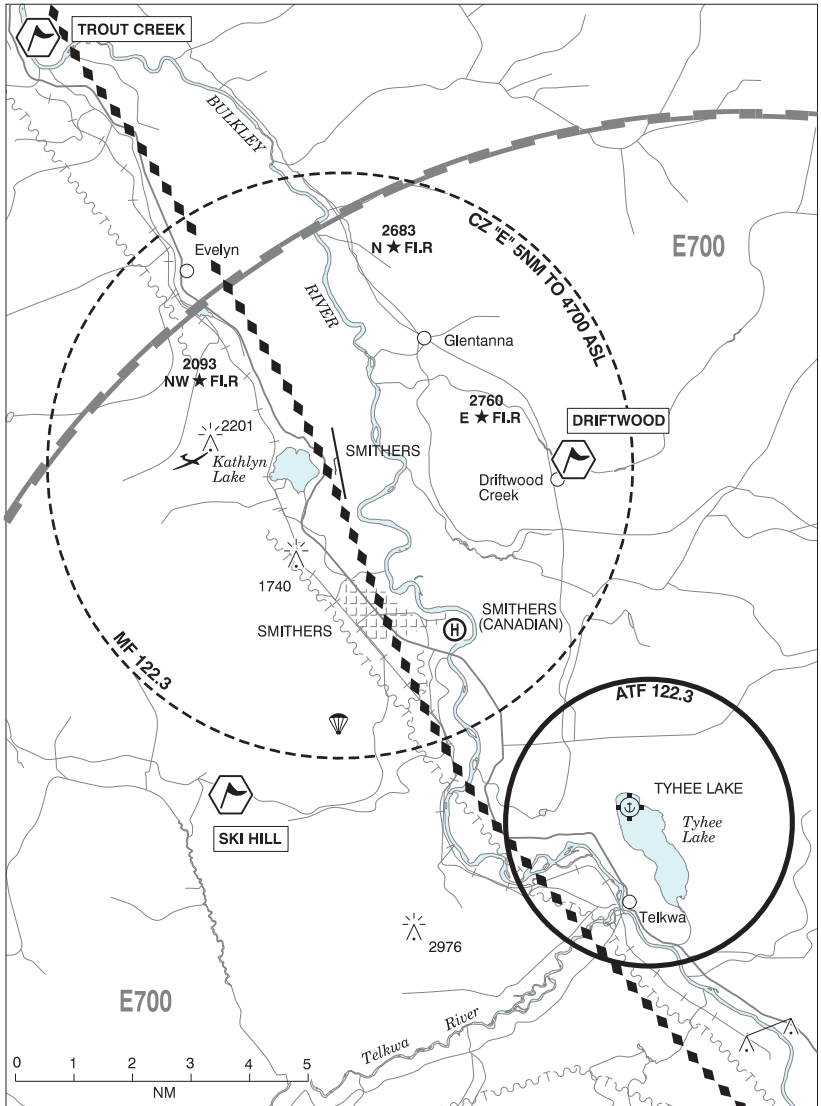
## AERODROME / FACILITY DIRECTORY

## SMITHERS BC (Cont'd)

CYYD

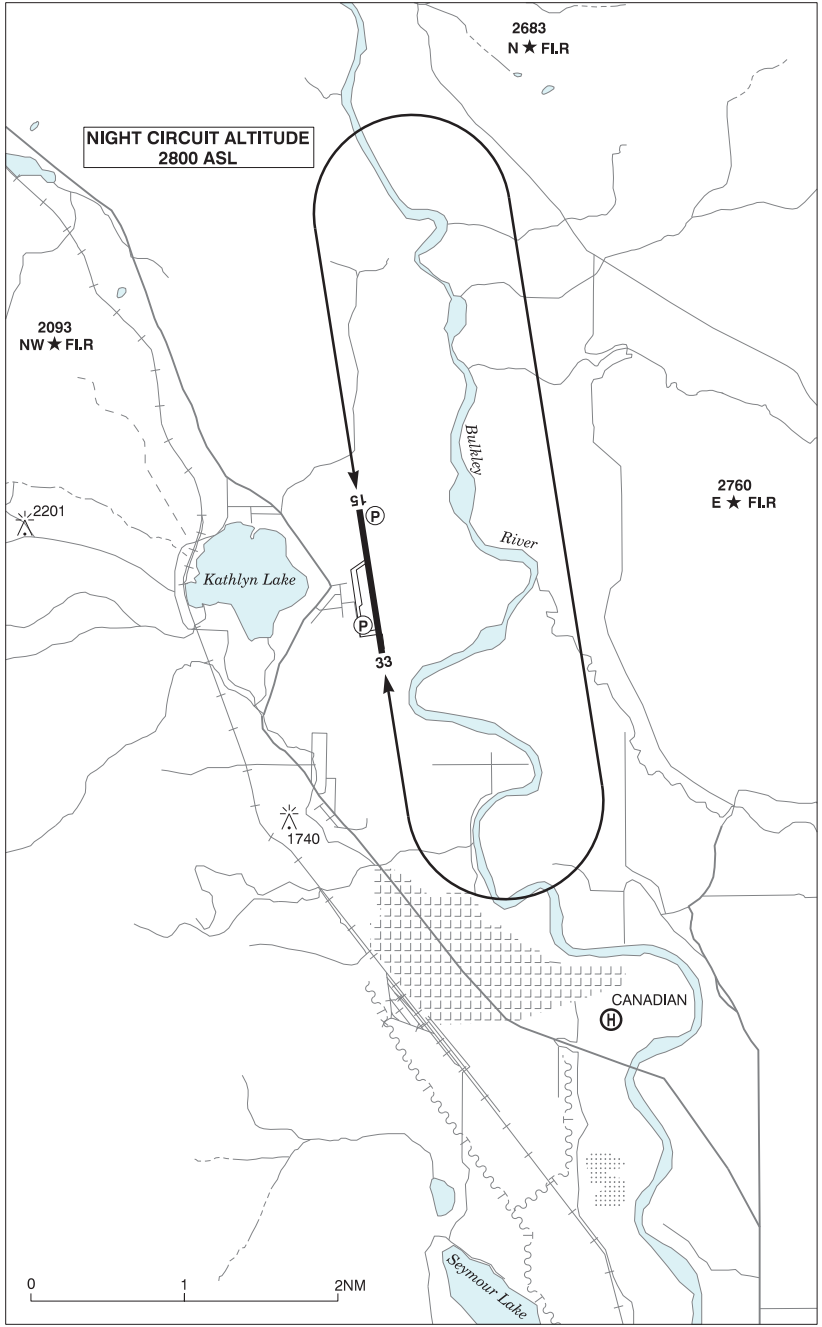
<b>COMM</b>	
<b>RADIO</b>	122.3 PTC avbl (V) 15-04Z† Oct 1-May 31, 14-06Z† Jun 1-Sep 30 (emerg only 250-847-2035).
<b>RCO</b>	Pacific rdo 123.375 (FISE)
<b>MF</b>	rdo 122.3 15-04Z† Oct 1-May 31, 14-06Z† Jun 1-Sep 30 O/T tfc 5NM 4700 ASL (CAR 602.98)
<b>AWOS</b>	128.65 04-15Z† Oct 1-May 31, 06-14Z† Jun 1-Sep 30
<b>NAV</b>	
<b>VOR/DME</b>	HOUSTON YYD 114.7 Ch 94 N54 27 08 W126 39 02 (4184')
<b>PRO</b>	Rgt hand circuits Rwy 33 (CAR 602.96). De-icing/anti-icing activity to be carried out on E edge of apron only. Ngt circuit alt 2800 ASL (1100 AGL) see VTPC.
<b>CAUTION</b>	Soaring activity W of aprt Apr-Oct. Ocsl parachuting aprx 5NM S. Smithers/Tyhee Lake water A/D: MF 122.3 aprx 9NM SE. Ngt ops are not recommended unless all 3 hazard bcns are oprg. Only pilots familiar with lcl terrain should use this aprt dur hrs of darkness. Extv bird activity Apr-Oct. Hi terrain reduces operational length of Rwy 15 and 33 PAPI.

**SMITHERS VFR TERMINAL PROCEDURES CHART**



NAME	IDENT	LAT/LONG
DRIFTWOOD	VCDWD	N54° 49' 00" W127° 04' 42"
SKI HILL	VCSHL	N54° 46' 06" W127° 15' 12"
TROUT CREEK	VCTRT	N54° 56' 30" W127° 19' 30"

**SMITHERS VFR TERMINAL PROCEDURES CHART - NIGHT CIRCUIT PROCEDURE**



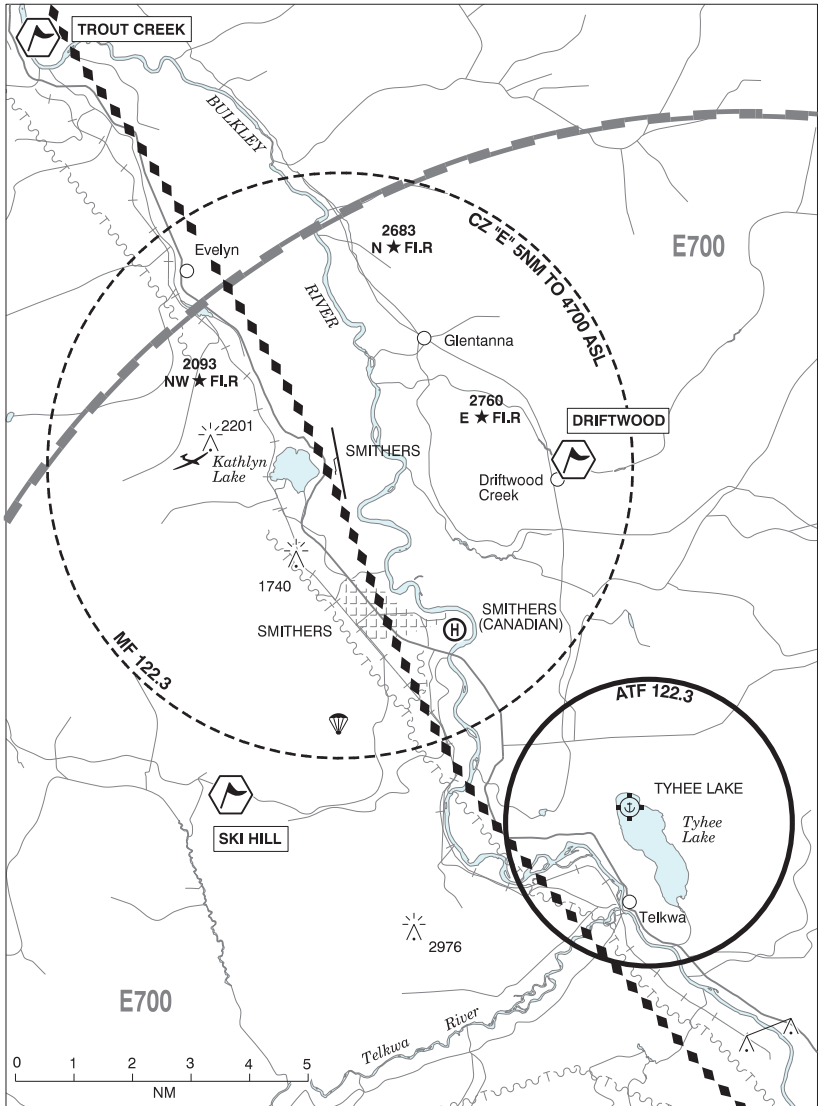
## BRITISH COLUMBIA

## AERODROME / FACILITY DIRECTORY

**SMITHERS (CANADIAN) BC (Heli)****CAA6**

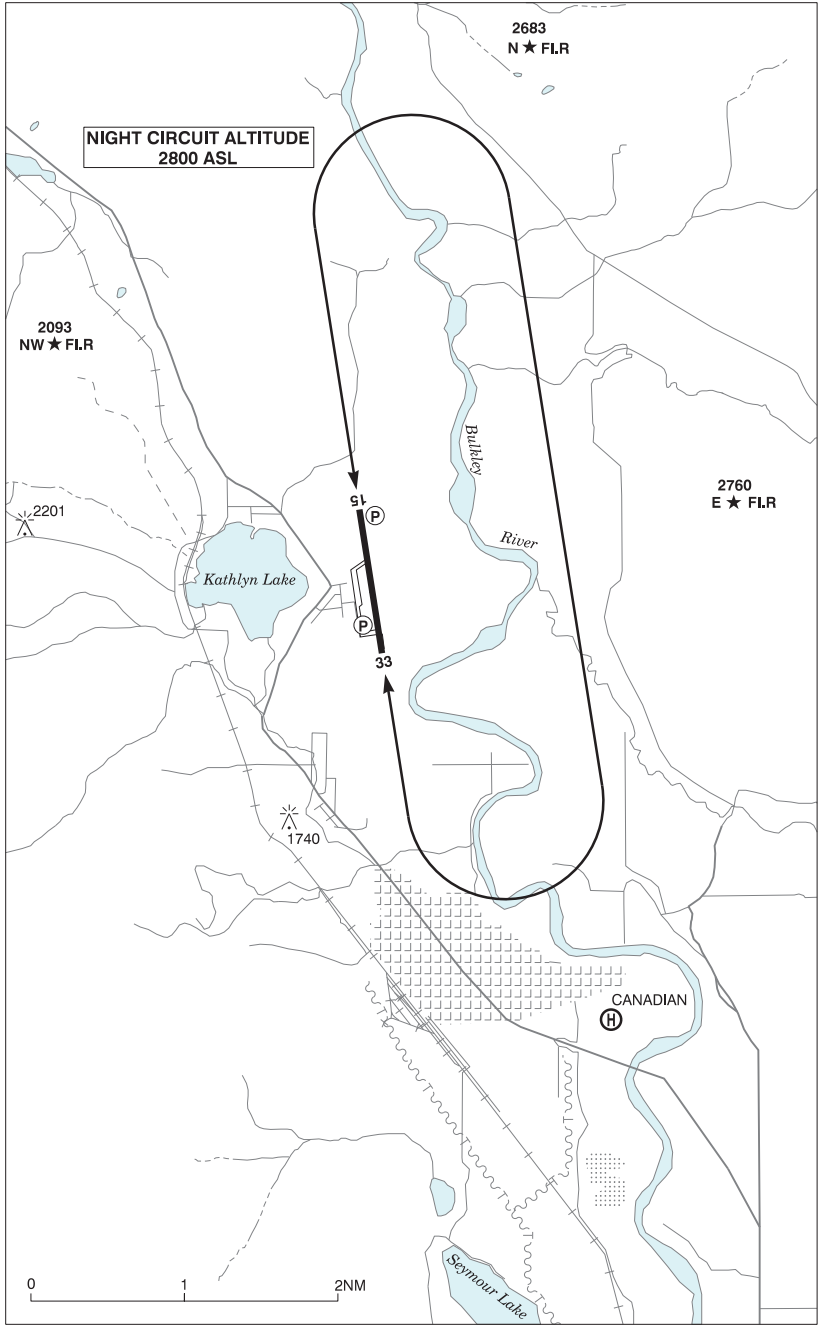
<b>REF</b>	N54 46 30 W127 08 06 19°E (2013) UTC-8(7) Elev 1600' A5013
<b>OPR</b>	Canadian Helicopters Ltd 250-847-9444 Reg PPR
<b>FLT PLN</b>	
<b>FIC</b>	Kamloops 866-WXBRIEF (Toll free within Canada) or 866-541-4101 (Toll free within Canada & USA)
<b>HELI DATA</b>	200' x 200' CONC/GRASS
<b>COMM</b>	
<b>MF</b>	rdo 122.3 15-04Z± (Oct 1-May 31), 14-06Z±(Jun 1-Sep 30) O/T tfc. 5NM centred on Smithers A/D 3.4NM NW 4700 ASL (CAR 602.98)

**SMITHERS VFR TERMINAL PROCEDURES CHART**



NAME	IDENT	LAT/LONG
DRIFTWOOD	VCDWD	N54° 49' 00" W127° 04' 42"
SKI HILL	VCSHL	N54° 46' 06" W127° 15' 12"
TROUT CREEK	VCTRT	N54° 56' 30" W127° 19' 30"

**SMITHERS VFR TERMINAL PROCEDURES CHART - NIGHT CIRCUIT PROCEDURE**



# CANADA WATER AERODROME SUPPLEMENT

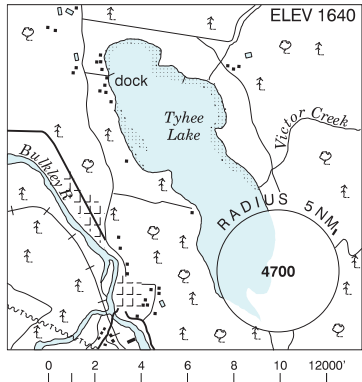
Effective 0901Z 19 March 2026 to 0901Z 18 February 2027

AERODROME/FACILITY DIRECTORY B245

## SMITHERS/TYHEE LAKE BC

CAX8

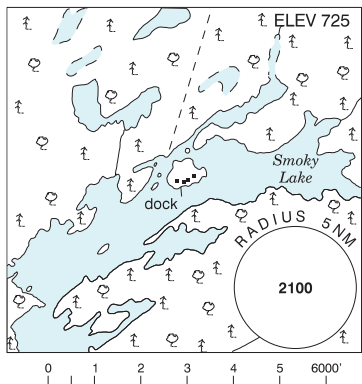
<b>REF</b>	N54 43 W127 03 Adj E 20°E (2012) UTC-8(7) Elev 1640' A5013
<b>OPR</b>	Alpine Lakes Air 250-846-9488 Reg
<b>PF</b>	B-1 C-2 D-3,4,5,6
<b>FLT PLN</b>	<b>FIC</b> Kamloops 866-WXBRIEF (Toll free within Canada) or 866-541-4101 (Toll free within Canada & USA)
<b>SERVICES</b>	PN (Note: Prior notice is applicable to all svcs) <b>S</b> 7
<b>A/D DATA</b>	Open water May-mid Nov. Depth 3' near dock, mud bottom. Skiplanes in win.
<b>COMM</b>	<b>ATF</b> Smithers rdo 122.3 2NM 3200 ASL
<b>NAV</b>	<b>VOR/DME</b> HOUSTON YYD 114.7 Ch 94 N54 27 08 W126 39 02 (4184')



## SMOKY LAKE ON

CNS2

<b>REF</b>	N45 51 W80 13 12SW Port Loring 11°W UTC-5(4) Elev 725' A5000 A5001
<b>OPR</b>	Tornado's Canadian Resorts Inc 705-757-2050 Reg PPR
<b>PF</b>	B-5
<b>FLT PLN</b>	<b>FIC</b> London 866-WXBRIEF (Toll free within Canada) or 866-541-4104 (Toll free within Canada & USA)
<b>A/D DATA</b>	Open water May-mid Nov.
<b>COMM</b>	<b>ATF</b> tfc 122.8 5NM 3700 ASL



**SNIDERS BAY ON** — See GRAVENHURST / SNIDERS BAY