

---

# FLIGHT PLAN & SITE SURVEY

---

C 58-5225 PRINCE GEORGE AEROMODELERS-  
GIESBRECHT FIELD

July 10, 2026



**IMPORTANT NOTICE**

Please ensure you have received all required authorizations prior to flight. This Site Survey was created using RPAS Wilco. The user accepts all responsibility for the accuracy of the information.

Terms & Conditions: [rpswilco.com/#tnc](https://rpswilco.com/#tnc)

# Mission Information

C 58-5225 PRINCE GEORGE AEROMODELERS- GIESBRECHT FIELD

## FLIGHT DETAILS

Reference No:	<b>MAAC-58-5225</b>
Project Name:	<b>PRINCE GEORGE AEROMODELERS</b>
Pilot Name:	<b>MAAC</b>
Pilot Certificate:	
Mission Type:	<b>VLOS</b>
Flight Start:	<b>July 10, 2026 10:08 AM</b>
Flight End:	<b>July 10, 2026 11:08 AM</b>

## LOCATION DETAILS

Flight Address:	<b>GIESBRECHT FIELD</b>
Latitude:	<b>53° 47' 11.69" N ( 53.787 )</b>
Longitude:	<b>122° 50' 57.84" W ( -122.849 )</b>
Field Elevation:	<b>2300 ft MSL</b>
Altitude / Radius:	<b>400 ft / 926 m ( 0.5 nm )</b>
Classification:	<b>UNCONTROLLED</b>
FIR / Contact:	<b>CZVR / 604-586-4500</b>

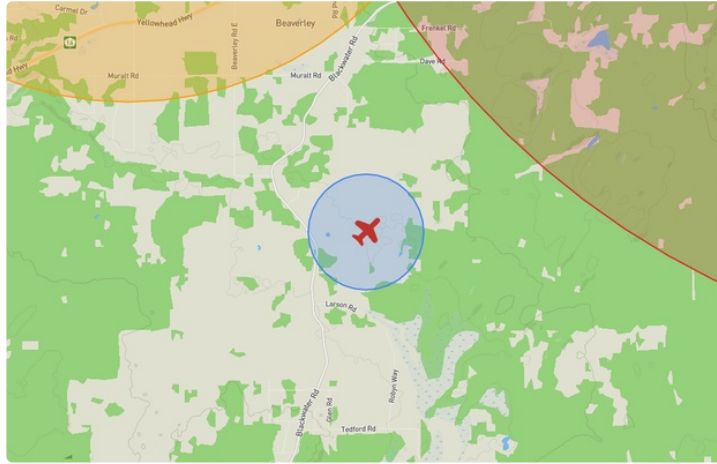
## REPORT CONTENTS

Site Survey • Obstacles (if available) • Nearby Aerodromes • Canadian Aviation Regulations • GFA • Aerodrome Supplements • METAR & TAF • NOTAMs • CFS





# Flight Map & MODEL Details

MISSION LOCATION SURVEY

## FLIGHT AREA MAP



## MISSION LOCATION DETAILS

ROLE	LATITUDE	LONGITUDE
 MODEL	53° 47' 11.69" N 53.787	122° 50' 57.84" W -122.849
 Pilot		
 Payload Op.		
 Observer		

# Airspace Classification

MISSION LOCATION SURVEY

## AIRSPACE MAP



## OVERLYING AIRSPACES

Class	Name	Floor	Ceiling
E	Prince George, BC [TA]	700AGL	1800MSL
E	Prince George, BC a) [CAE]	5200AGL	1800MSL

Planned flight altitude is below the lowest documented airspace layer

## NEAREST AERODROMES & DISTANCE FROM OPERATION

BEAVERLEY (CBA8 - AERODROME - Reg) Lat: 53.856 Long: -122.907 8.566KM 4.625NM NW

**Operator:** CYRS RECREATIONAL AVIATION PARK: PHONE: 250-617-8228, PHONE: 250-964-8228, POST: UNKNOWN **FIR Contact:** 604-586-4500

PRINCE GEORGE (CYXS - AERODROME - Cert) Lat: 53.884 Long: -122.678 15.63KM 8.44NM NE

**Operator:** PRINCE GEORGE AIRPORT AUTHORITY: PHONE: 250-963-2400, POST: UNKNOWN **FIR Contact:** 604-586-4500

## BRITISH COLUMBIA

## AERODROME / FACILITY DIRECTORY

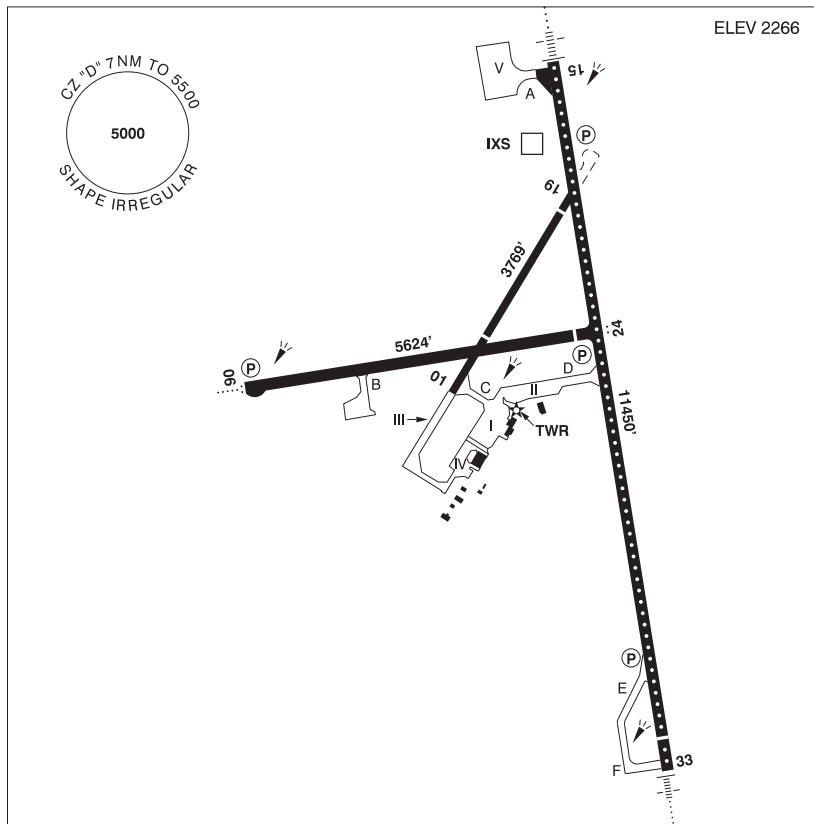
## BEAVERLEY BC

CBA8

<b>REF</b>	N53 51 20 W122 54 27 2.5N 19°E (2012) UTC-8(7) Elev 2420' A5014	
<b>OPR</b>	Cyr's Recreational Avn Park 250-964-8228 or 250-617-8228 Reg	
<b>PF</b>	B-1 C-2 D-3,4,5,6	
<b>FLT PLN</b>	<b>FIC</b> Kamloops 866-WXBRIEF (Toll free within Canada) or 866-541-4101 (Toll free within Canada & USA)	
<b>SERVICES</b>	<b>S</b> 2,4,5	
<b>RWY DATA</b>	Rwy 07(071°)/25(251°) 2461x50 gravel <b>RCR</b> Opr Jun-Sep No win maint. Rwy soft in spring & fall.	
<b>COMM</b>	<b>ATF</b> tfc 122.8 2NM 4000 ASL	
<b>CAUTION</b>	Parajumping in area to 12,500 ASL by NOTAM. 80' trees 100' S rwy. Wildlife ocsl on rwy.	

PRINCE GEORGE BC

CYXS



<b>REF</b>	N53 53 03 W122 40 39 2.8SE 18°E (2014) UTC-8(7) Elev 2266' A5014 LO1 HI3 CAP
<b>OPR</b>	Prince George Airport Authority 250-963-2400 Cert
<b>PF</b>	A-1,2,3,6 C-4,5
<b>CUST</b>	AOE/30 (120 with staged off-loading) 888-226-7277 1630-0030Z†
<b>FLT PLN</b>	<p><b>FIC</b> Kamloops 866-WXBRIEF (Toll free within Canada) or 866-541-4101 (Toll free within Canada &amp; USA)</p> <p><b>WX</b> METAR AUTO H24 (see COMM). TAF H24, issue times: 01, 07, 13, 19Z. WxCam</p>
<b>SERVICES</b>	<p><b>FUEL</b> 100LL, JA-1 (FSII avbl), F-34, JB, HPR</p> <p><b>OIL</b> All</p> <p><b>S</b> 1,2,3,4</p> <p><b>ARFF</b> DESIGNATED CAT 7 1400-0730Z† O/T call out chg, 2 hr PN</p> <p><b>PVT ADV</b> Jetmark 129.4 250-961-8124</p> <p><b>MIL CON</b> Executive Aviation 250-961-8124</p>

## BRITISH COLUMBIA

## AERODROME / FACILITY DIRECTORY

## PRINCE GEORGE BC (Cont'd)

CYXS

<b>RWY DATA</b>	Rwy 15(153°)/33(333°) 11450x150 ASPH Thld 33 displ 500' Rwy 15 down 0.3% Rwy 06(063°)/24(243°) 5624x150 ASPH Thld 24 displ 401' Rwy 24 up 0.87% Rwy 01(013°)/19(193°) 3769x75 ASPH Thld 01 displ 984'. Thld 19 displ 373'
<b>RWY CERT</b>	Rwy 15 RVR 1200(1/4sm)/Rwy 33 RVR 1200(1/4sm) AGN V Rwy 06/24 AGN IIIB Rwy 01/19 AGN III
<b>TWY CERT</b>	Twy: B AGN IIIB Twy: C, D AGN IV
<b>RCR</b>	Opr 1300-0730Z†. Rwy 01/19 rstd to 12,500 lbs for ldg & tkof day only. Win maint 1300-0730Z† O/T 2hr PN cost recovery. CRFI, PCN.
<b>LIGHTING</b>	06-AO(TE ME) P2, 24-AS(TE ME) P2, 15-AN(TE HI CL) P3, 33-AN(TE HI CL) P2 PAPI limitation/restriction. PAPI Rwy 24 to be used only within 5NM of thld ARCAL-118.3 type K when twr clsd Rwys 01/19 lit as twy
<b>COMM</b>	
<b>RCO</b>	Williams Lake rdo 118.3 (RAAS) 05-14Z† Pacific rdo 123.55 (FISE) 126.7 (bcst)
<b>ATIS</b>	128.725 14-05Z†
<b>GND</b>	121.9 14-05Z†
<b>TWR</b>	118.3 (V) 14 -05Z† (emerg only 250-963-9177)
<b>MF</b>	Williams Lake rdo 118.3 05-14Z† CZ shape irregular 7NM 5500 ASL (CAR 602.98) (emerg only 250-989-4415)
<b>PAL</b>	Vancouver Ctr 133.8
<b>AWOS</b>	128.725 05-14Z†
<b>NAV</b>	
<b>VOR/DME</b>	YXS 112.3 Ch 70 N53 53 39 W122 27 20 (4076')
<b>DME</b>	IXS 109.5 Ch 32 N53 53 46 W122 40 19 (2260')
<b>ILS</b>	IXS 109.5 (Rwy 15) RVR
<b>PRO</b>	Rgt hand circuits Rwys 19, 24 & 33 (CAR 602.96).
<b>CAUTION</b>	Tall vehicles crossing 910' N thld Rwy 15. Extv bird activity dur spring & fall. Parajumping activity vic Beaverley A/D 8NM SW to 12,500 ASL by NOTAM, monitor 122.1. Radiosonde balloon launches with an ascent rate of 1000 ft/min daily between the hours of 1115-1345Z & 2315-0145Z. Hi terrain reduces operational length of Rwy 24 PAPI.