

---

# FLIGHT PLAN & SITE SURVEY

---

L 552-5345 YOUNGS POINT RADIO CONTROL FLYING  
CLUB- RIVERVIEW PARK AND ZOO MEETING ROOM

July 10, 2026



**IMPORTANT NOTICE**

Please ensure you have received all required authorizations prior to flight. This Site Survey was created using RPAS Wilco. The user accepts all responsibility for the accuracy of the information.

Terms & Conditions: [rpaswilco.com/#tnc](https://rpaswilco.com/#tnc)

# Mission Information

L 552-5345 YOUNGS POINT RADIO CONTROL FLYING CLUB- RIVERVIEW PARK AND ZOO MEETING ROOM

## FLIGHT DETAILS

Reference No:	<b>MAAC-552-5345</b>
Project Name:	<b>YOUNGS POINT RADIO CONTROL FLYING CLUB</b>
Pilot Name:	<b>MAAC</b>
Pilot Certificate:	
Mission Type:	<b>VLOS</b>
Flight Start:	<b>July 10, 2026 01:10 PM</b>
Flight End:	<b>July 10, 2026 02:10 PM</b>

## LOCATION DETAILS

Flight Address:	<b>RIVERVIEW PARK AND ZOO MEETING ROOM</b>
Latitude:	<b>44° 20' 39.48" N ( 44.344 )</b>
Longitude:	<b>78° 18' 33.12" W ( -78.309 )</b>
Field Elevation:	<b>719 ft MSL</b>
Altitude / Radius:	<b>400 ft / 926 m ( 0.5 nm )</b>
Classification:	<b>UNCONTROLLED</b>
FIR / Contact:	<b>CZYZ / 905-676-4509</b>

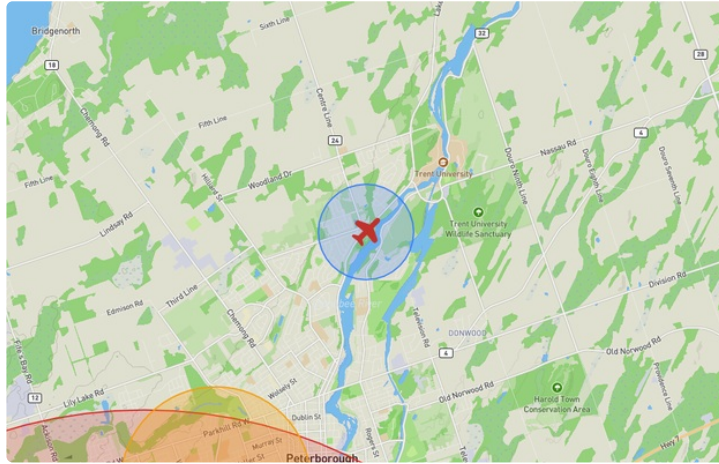
## REPORT CONTENTS

Site Survey • Obstacles (if available) • Nearby Aerodromes • Canadian Aviation Regulations • GFA • Aerodrome Supplements • METAR & TAF • NOTAMs • CFS





# Flight Map & MODEL Details

MISSION LOCATION SURVEY

## FLIGHT AREA MAP



## MISSION LOCATION DETAILS

ROLE	LATITUDE	LONGITUDE
 MODEL	44° 20' 39.48" N 44.344	78° 18' 33.12" W -78.309
 Pilot		
 Payload Op.		
 Observer		

# Airspace Classification

MISSION LOCATION SURVEY

## AIRSPACE MAP



## OVERLYING AIRSPACES

Class	Name	Floor	Ceiling
E	Peterborough, ON [TA]	700AGL	18000MSL
E	T614 Fixed RNAV Route	2200AGL	18000MSL

Planned flight altitude is below the lowest documented airspace layer

## NEAREST AERODROMES & DISTANCE FROM OPERATION

PETERBOROUGH (REG HEALTH CENTRE) (CNU3 - HELIPOINT - Reg)	Lat: 44.301	Long: -78.346	5.67KM	3.062NM	SW
<b>Operator:</b> PETERBOROUGH REGIONAL HEALTH CENTRE: PHONE: 705-743-2121, POST: UNKNOWN <b>FIR Contact:</b> 905-676-4509					
PETERBOROUGH (CYPQ - AERODROME - Cert)	Lat: 44.23	Long: -78.363	13.384KM	7.227NM	S
<b>Operator:</b> CITY OF PETERBOROUGH: PHONE: 705-743-6708, POST: UNKNOWN <b>FIR Contact:</b> 905-676-4509					
ELMHIRST'S RESORT (CPS2 - AERODROME - Reg)	Lat: 44.252	Long: -78.106	19.131KM	10.33NM	SE
<b>Operator:</b> ELMHIRST'S RESORT (KEENE) LTD: PHONE: 705-295-4591, POST: UNKNOWN <b>FIR Contact:</b> 905-676-4509					

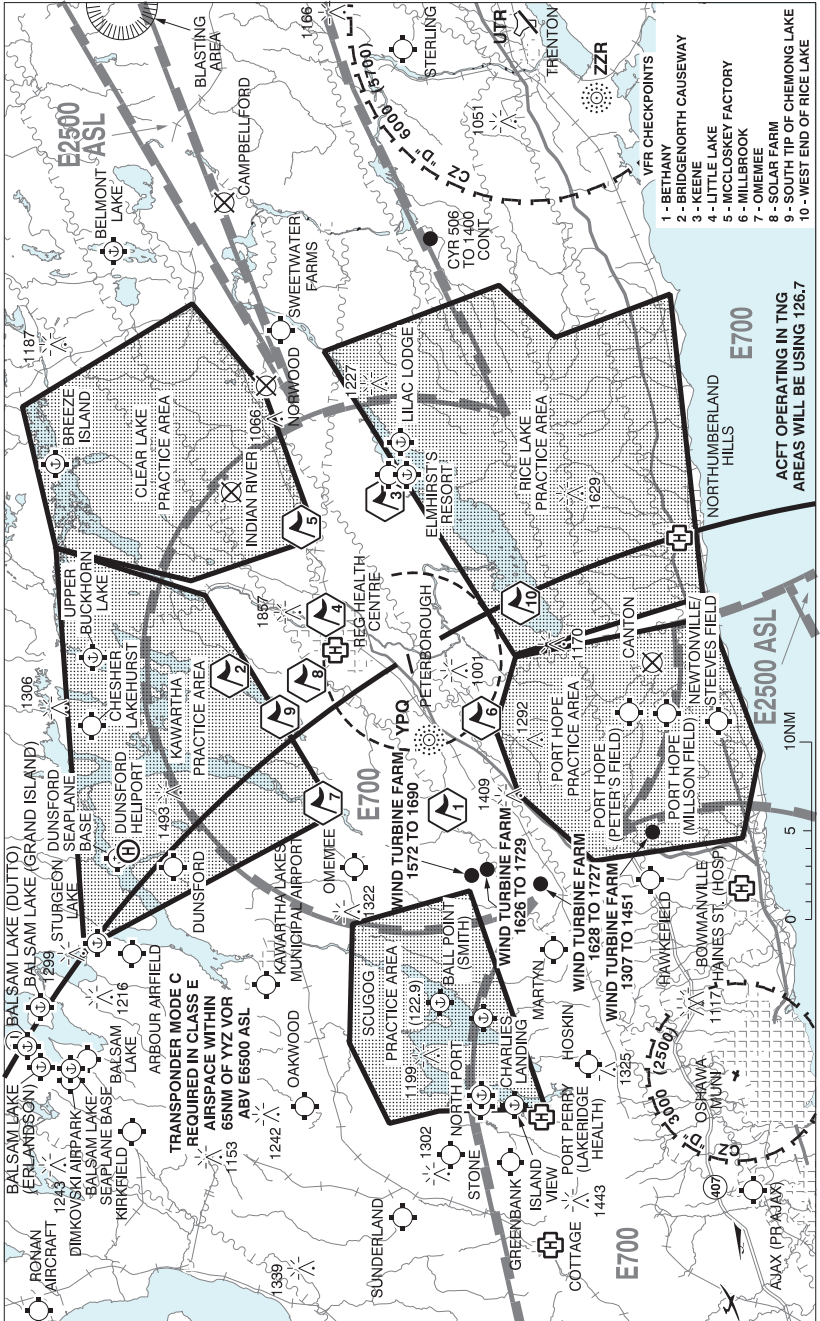
## ONTARIO

## AERODROME / FACILITY DIRECTORY

**PETERBOROUGH (REG HEALTH CENTRE) ON (Heli)****CNU3**

<b>REF</b>	N44 18 02 W78 20 45 Adj W 12°W UTC-5(4) Elev 738' A5000	
<b>OPR</b>	Peterborough Regional Health Centre 705-743-2121 Cert PPR	
<b>FLT PLN</b>	<b>FIC</b> London 866-WXBRIEF (Toll free within Canada) or 866-541-4104 (Toll free within Canada & USA)	
<b>HELI DATA</b>	<b>RCR</b> FATO/TLOF 90' dia CONC Safety Area 120' dia Max heli overall length 60' Opr	
<b>LIGHTING</b>	<b>RY(LO)</b> Green <b>RF(FL)</b> ARCAL- 122.025 key mic 7 times to activate	
<b>COMM</b>	<b>MF</b> UNICOM ltd hrs O/T tfc 122.025 5NM centred on Peterborough A/D 4.3NM SSW 3600 ASL (CAR 602.98)	
<b>PRO</b>	Arr/dep 153° to 183° fr heli, slope 8% (H3) day/night use.	
<b>CAUTION</b>	Lgtd and painted twr 891 ASL (154 AGL) aprx 350' W of A/D	

**PETERBOROUGH VFR TERMINAL PROCEDURES CHART**



- VFR CHECKPOINTS
- 1 - BETHANY
  - 2 - BRIDGENORTH CAUSEWAY
  - 3 - KEENE
  - 4 - LITTLE LAKE
  - 5 - MCCLOSKEY FACTORY
  - 6 - MILLBROOK
  - 7 - OMEMEE
  - 8 - SOLAR FARM
  - 9 - SOUTH TIP OF CHEMONG LAKE
  - 10 - WEST END OF RICE LAKE

## ONTARIO

## AERODROME / FACILITY DIRECTORY

**PETERBOROUGH VFR TERMINAL PROCEDURES CHART (Cont'd)**

<b>NAME</b>	<b>IDENT</b>	<b>LAT/LONG</b>
BETHANY	VCBNY	N44° 10' 57" W078° 34' 03"
BRIDGENORTH CAUSEWAY	VCBGN	N44° 23' 14" W078° 23' 33"
KEENE	VCKNE	N44° 14' 28" W078° 09' 44"
LITTLE LAKE	VCLTL	N44° 17' 48" W078° 18' 45"
MCCLOSKEY FACTORY	VCLSK	N44° 19' 11" W078° 11' 52"
MILLBROOK	VCMLB	N44° 09' 02" W078° 26' 51"
OMEMEE	VCMEE	N44° 17' 57" W078° 33' 31"
SOLAR FARM	VCSOL	N44° 18' 54" W078° 23' 54"
SOUTH TIP OF CHEMONG LAKE	VCHMG	N44° 20' 24" W078° 26' 46"
WEST END OF RICE LAKE	VCRCE	N44° 06' 50" W078° 17' 51"

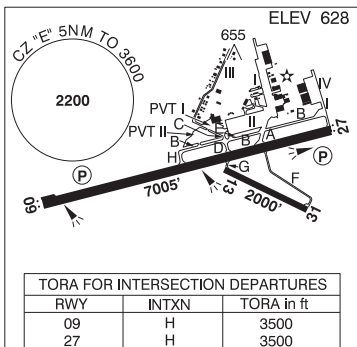
## ONTARIO

## AERODROME / FACILITY DIRECTORY

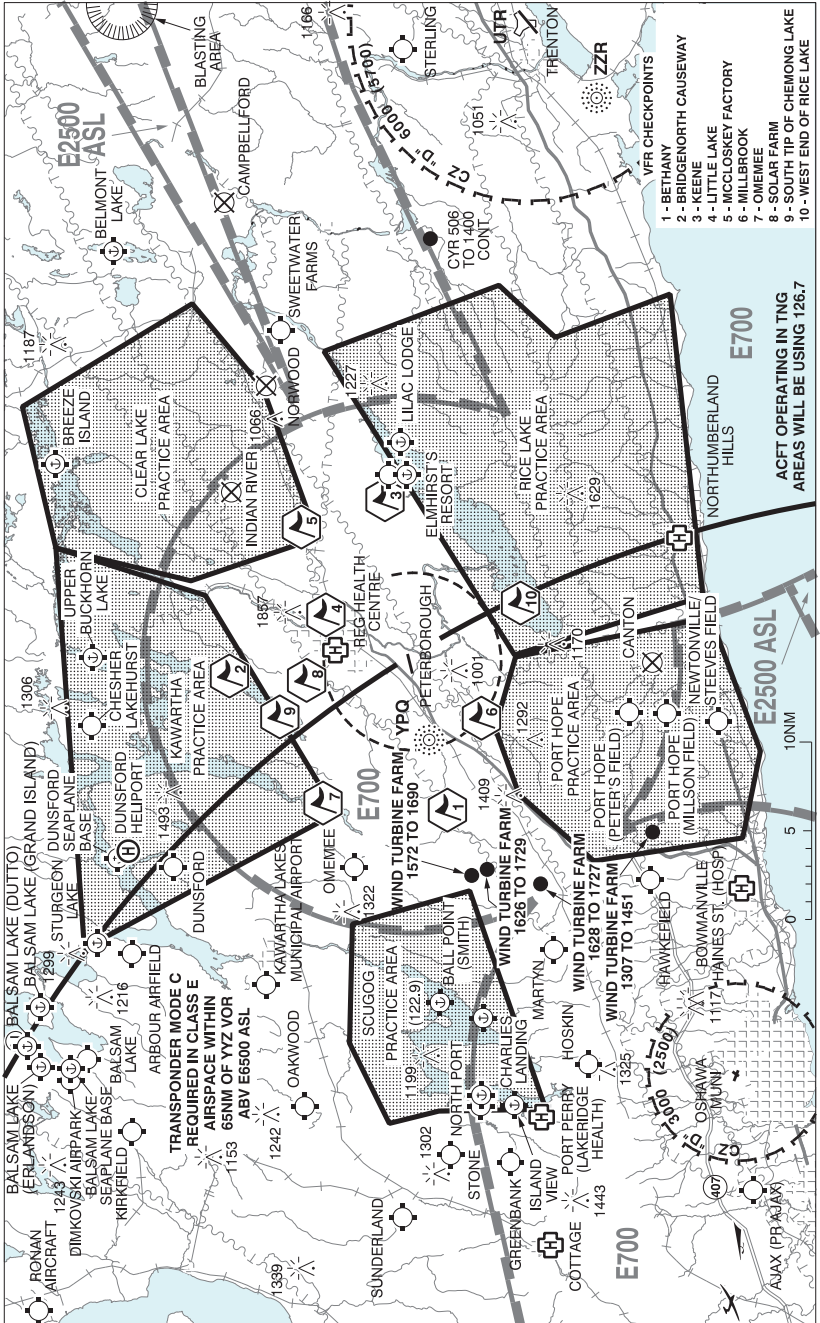
## PETERBOROUGH ON

CYPQ

<b>REF</b>	N44 13 50 W78 21 47 3SSW 12°W UTC-5(4) Elev 628' A5000 LO6 HI5 CAP	
<b>OPR</b>	City of Peterborough 705-743-6708 12-23Z† Oct 01-Mar 31, 12-01Z† Apr 01-Sep 30 Cert	
<b>PF</b>	A-1,7 After hrs airside tml access code 2977*. After hrs groundside tml access code 2977#. A-2 01-20Z† Tue-Sun B-8 C-2,3,4,5,6	
<b>CUST</b>	AOE/15 1330-2130Z† Mon-Fri exc hols 888-226-7277 PN	
<b>FLT PLN</b>	<p><b>FIC</b> London 866-WXBRIEF (Toll free within Canada) or 866-541-4104 (Toll free within Canada &amp; USA)</p> <p><b>WX</b> METAR AUTO H24 (see COMM). TAF 11-03Z†, issue times: 11,14, 20Z (DT 10, 14, 20Z) WxCam</p>	
<b>SERVICES</b>	12-01Z† Apr-Sep, 12-23Z† Oct-Mar. Stay late or callout on request. After hrs callout chg may apply. Call 705-745-8626.	
<b>FUEL</b>	100LL, JA-1 (FSII avbl)	
<b>OIL</b>	All	
<b>S</b>	1,2,3,4,5,6	
<b>SUP FL</b>	D & A-ice	
<b>JASU</b>	CE13	
<b>MILCON</b>	Stewart Aviation (World Fuel Services) 705-745-8626	
<b>RWY DATA</b>	Rwy 09(088°)/27(268°) 7005x100 ASPH Rwy 13(128°)/31(308°) 2000x49 ASPH Day use only	
<b>RWY CERT</b>	Rwy 09/27 AGN IIIB Rwy 13/31 AGN I	
<b>TWY CERT</b>	Twy: C, F, G AGN I	
<b>TWY</b>	Twy B holding bay rstd to acft wingspans less than 79'. Twy C rstd to 11,800 lbs or less. Twy F & G day use only.	
<b>APRON</b>	Pvt Apron II (Adj B & C) rstd to 3000 lbs or less	
<b>RCR</b>	Opr Win maint 12-23Z† O/T 3 hrs PN CRFI/RSC avbl ltd hrs PCN	
<b>LIGHTING</b>	09-AS(TE ME) P2, 27-AS(TE ME) P2 ARCAL-122.025 type K	
<b>COMM</b>	<p><b>MF</b> UNICOM ltd hrs O/T tfc 122.025 5NM 3600 ASL (CAR 602.98)</p> <p><b>PAL</b> Toronto Ctr 134.25</p> <p><b>AWOS</b> 126.925 (YPQ)</p>	
<b>NAV</b>	<b>NDB</b> YPQ 379 (L) N44 12 45 W78 27 47	
<b>PRO</b>	PPR for cont circuits on Rwy 13/31. Extv flt tng within 25NM of A/D, all quadrants to 6000' ASL. (See VTFC).	
<b>NOISE</b>	Noise Operating Criteria (CAR 602.105): Rwy 09/27 VFR tkof/climb, no turns below 1000 AAE. Avoid overflight of noise sensitive areas while joining/departing circuit ctc opr for details.	
<b>CAUTION</b>	Wildlife frequently on rwys. Lgtd twr 775 ASL (122 AGL) aprx 0.75NM WNW of Thld 09. Trees 42 AGL 807' before Thld 31. Extv bird activity at landfill 3NM ESE of Thld 27. Trees 85 AGL 3900' before Thld 27 and 450' N of extended rwy centreline.	



**PETERBOROUGH VFR TERMINAL PROCEDURES CHART**



## ONTARIO

AERODROME / FACILITY DIRECTORY

**PETERBOROUGH VFR TERMINAL PROCEDURES CHART (Cont'd)**

<b>NAME</b>	<b>IDENT</b>	<b>LAT/LONG</b>
BETHANY	VCBNY	N44° 10' 57" W078° 34' 03"
BRIDGENORTH CAUSEWAY	VCBGN	N44° 23' 14" W078° 23' 33"
KEENE	VCKNE	N44° 14' 28" W078° 09' 44"
LITTLE LAKE	VCLTL	N44° 17' 48" W078° 18' 45"
MCCLOSKEY FACTORY	VCLSK	N44° 19' 11" W078° 11' 52"
MILLBROOK	VCMLB	N44° 09' 02" W078° 26' 51"
OMEMEE	VCMEE	N44° 17' 57" W078° 33' 31"
SOLAR FARM	VCSOL	N44° 18' 54" W078° 23' 54"
SOUTH TIP OF CHEMONG LAKE	VCHMG	N44° 20' 24" W078° 26' 46"
WEST END OF RICE LAKE	VCRCE	N44° 06' 50" W078° 17' 51"

## ONTARIO

## AERODROME / FACILITY DIRECTORY

## KEENE / ELMHIRST'S RESORT ON

CPS2

<b>REF</b>	N44 15 07 W78 06 23 3E 12°W UTC-5(4) Elev 650' A5000	
<b>OPR</b>	Elmhirst's Resort (Keene) Ltd 705-295-4591 Reg PPR	
<b>PF</b>	A-1,2,5,7,8 C-4 D-3,6	
<b>FLT PLN</b>	<b>FIC</b> London 866-WXBRIEF (Toll free within Canada) or 866-541-4104 (Toll free within Canada & USA)	
<b>RWY DATA</b>	Rwy 06/24 2800x50 GRASS <b>RCR</b> Opr Ltd win maint	
<b>COMM</b>	<b>ATF</b> UNICOM ltd hrs O/T tfc 122.8 5NM 3700 ASL	
<b>PRO</b>	Seaplane activity at adj base. Rwy rises fr both thlds, one thld not vis fr opposite thld.	