

---

# FLIGHT PLAN & SITE SURVEY

---

L 552-5453 YOUNGS POINT RADIO CONTROL FLYING  
CLUB- YPRCFC ADDITIONAL FLOAT SITE (B)

July 10, 2026



## IMPORTANT NOTICE

Please ensure you have received all required authorizations prior to flight. This Site Survey was created using RPAS Wilco. The user accepts all responsibility for the accuracy of the information.

Terms & Conditions: [rpaswilco.com/#tnc](https://rpaswilco.com/#tnc)

# Mission Information

L 552-5453 YOUNGS POINT RADIO CONTROL FLYING CLUB- YPRCFC ADDITIONAL FLOAT SITE (B)

## FLIGHT DETAILS

Reference No:	<b>MAAC-552-5453</b>
Project Name:	<b>YOUNGS POINT RADIO CONTROL FLYING CLUB</b>
Pilot Name:	<b>MAAC</b>
Pilot Certificate:	
Mission Type:	<b>VLOS</b>
Flight Start:	<b>July 10, 2026 01:11 PM</b>
Flight End:	<b>July 10, 2026 02:11 PM</b>

## LOCATION DETAILS

Flight Address:	<b>YPRCFC ADDITIONAL FLOAT SITE (B)</b>
Latitude:	<b>44° 25' 5.60" N ( 44.418 )</b>
Longitude:	<b>78° 22' 4.70" W ( -78.368 )</b>
Field Elevation:	<b>801 ft MSL</b>
Altitude / Radius:	<b>400 ft / 926 m ( 0.5 nm )</b>
Classification:	<b>UNCONTROLLED</b>
FIR / Contact:	<b>CZYZ / 905-676-4509</b>

## REPORT CONTENTS

Site Survey • Obstacles (if available) • Nearby Aerodromes • Canadian Aviation Regulations • GFA • Aerodrome Supplements • METAR & TAF • NOTAMs • CFS





# Flight Map & MODEL Details

MISSION LOCATION SURVEY

## FLIGHT AREA MAP



## MISSION LOCATION DETAILS

ROLE	LATITUDE	LONGITUDE
 MODEL	44° 25' 5.60" N 44.418	78° 22' 4.70" W -78.368
 Pilot		
 Payload Op.		
 Observer		

# Airspace Classification

MISSION LOCATION SURVEY

## AIRSPACE MAP



## OVERLYING AIRSPACES

Class	Name	Floor	Ceiling
E	Peterborough, ON [TA]	700AGL	18000MSL
E	T614 Fixed RNAV Route	2200AGL	18000MSL

Planned flight altitude is below the lowest documented airspace layer

## NEAREST AERODROMES & DISTANCE FROM OPERATION

UPPER BUCKHORN LAKE (CUB2 - WATERDROME - Reg)	Lat: 44.527	Long: -78.357	12.149KM	6.56NM	N
<b>Operator:</b> DAVID GAGE: PHONE: 705-657-1767, POST: UNKNOWN <b>FIR Contact:</b> 905-676-4509					
CHESHER LAKEHURST (CLH5 - AERODROME - Reg)	Lat: 44.525	Long: -78.448	13.494KM	7.286NM	NW
<b>Operator:</b> JEFF CHESHER: FAX: 705-657-9627, PHONE: 705-927-8799, POST: UNKNOWN <b>FIR Contact:</b> 905-676-4509					
PETERBOROUGH (REG HEALTH CENTRE) (CNU3 - HELIPOINT - Reg)	Lat: 44.301	Long: -78.346	13.202KM	7.129NM	S
<b>Operator:</b> PETERBOROUGH REGIONAL HEALTH CENTRE: PHONE: 705-743-2121, POST: UNKNOWN <b>FIR Contact:</b> 905-676-4509					

# CANADA WATER AERODROME SUPPLEMENT

Effective 0901Z 19 March 2026 to 0901Z 18 February 2027

AERODROME/FACILITY DIRECTORY B19

## BRECHIN / RONAN AIRCRAFT ON

CDU7

<b>REF</b>	N44 34 17 W79 13 26 2.6NW 11°W (2019) UTC-5(4) Elev 740' A5000	
<b>OPR</b>	Doug Ronan 705-327-4730 Reg PPR	
<b>PF</b>	C-1,2,5,7,8 D-3,4,6	
<b>FLT PLN</b>	<b>FIG</b> London 866-WXBRIEF (Toll free within Canada) or 866-541-4104 (Toll free within Canada & USA)	
<b>RWY DATA</b>	Rwy 07(071°)/25(251°) 2000x75 GRASS Rwy 15(145°)/33(325°) 2000x75 GRASS Rwy 08(080°)/26(260°) 2000x75 WATER	
<b>RCR</b>	Opr No win maint. Grass rwys soft when wet. Rwy 08/26 Open May-Nov	
<b>COMM</b>	<b>ATF</b> UNICOM ltd hrs O/T tfc 122.95 2.5NM 3800 ASL	
<b>CAUTION</b>	A/D status unkn aprx 427' W Thld 07. Unmarked P-lines aprx 200' N Thld 15. Trees aprx 40 AGL aprx 300' W of Thld 08. Aerobatics may be in progress over A/D 5700 ASL & BLW.	

## BREEZE ISLAND ON — See BURLEIGH FALLS / BREEZE ISLAND

## BUCKHORN / UPPER BUCKHORN LAKE ON

CUB2

<b>REF</b>	N44 31 38 W78 21 27 1.8SSW 11°W (2023) UTC-5(4) Elev 804' A5000	
<b>OPR</b>	David Gage 705-657-1767 Reg PPR	
<b>PF</b>	C-2,3,4 D-5,6	
<b>FLT PLN</b>	<b>FIG</b> London 866-WXBRIEF (Toll free within Canada) or 866-541-4104 (Toll free within Canada & USA)	
<b>A/D DATA</b>	Open water May 1–Nov 1.	
<b>COMM</b>	<b>ATF</b> tfc 122.8 5NM 3900 ASL	
<b>CAUTION</b>	Boat tdc fur sum.	

## BUCK LAKE ON — See SEVERN BRIDGE / BUCK LAKE

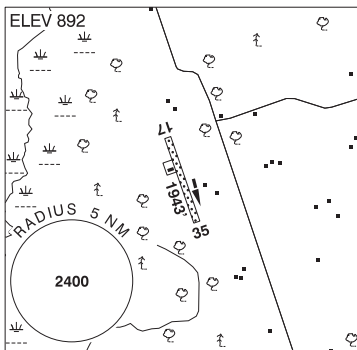
**ONTARIO**

**AERODROME / FACILITY DIRECTORY**

**BOBCAYGEON / CHESHER LAKEHURST ON**

**CLH5**

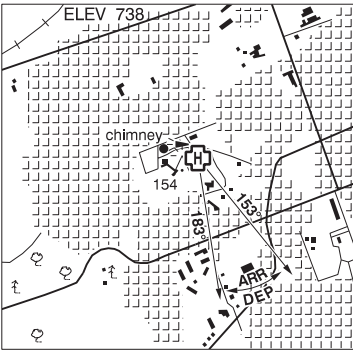
<b>REF</b>	N44 31 32 W78 26 53 4.3ESE 11°W (2017) UTC-5(4) Elev 892' A5000
<b>OPR</b>	Jeff Chesher 705-927-8799 Reg PPR
<b>PF</b>	D-1,2,3,4,5,6
<b>FLT PLN</b>	
<b>FIC</b>	London 866-WXBRIEF (Toll free within Canada) or 866-541-4104 (Toll free within Canada & USA)
<b>RWY DATA</b>	Rwy 17(173°)/35(353°) 1943x98 GRASS
<b>RCR</b>	Opr
<b>COMM</b>	
<b>ATF</b>	tfc 122.8 5NM 3900 ASL



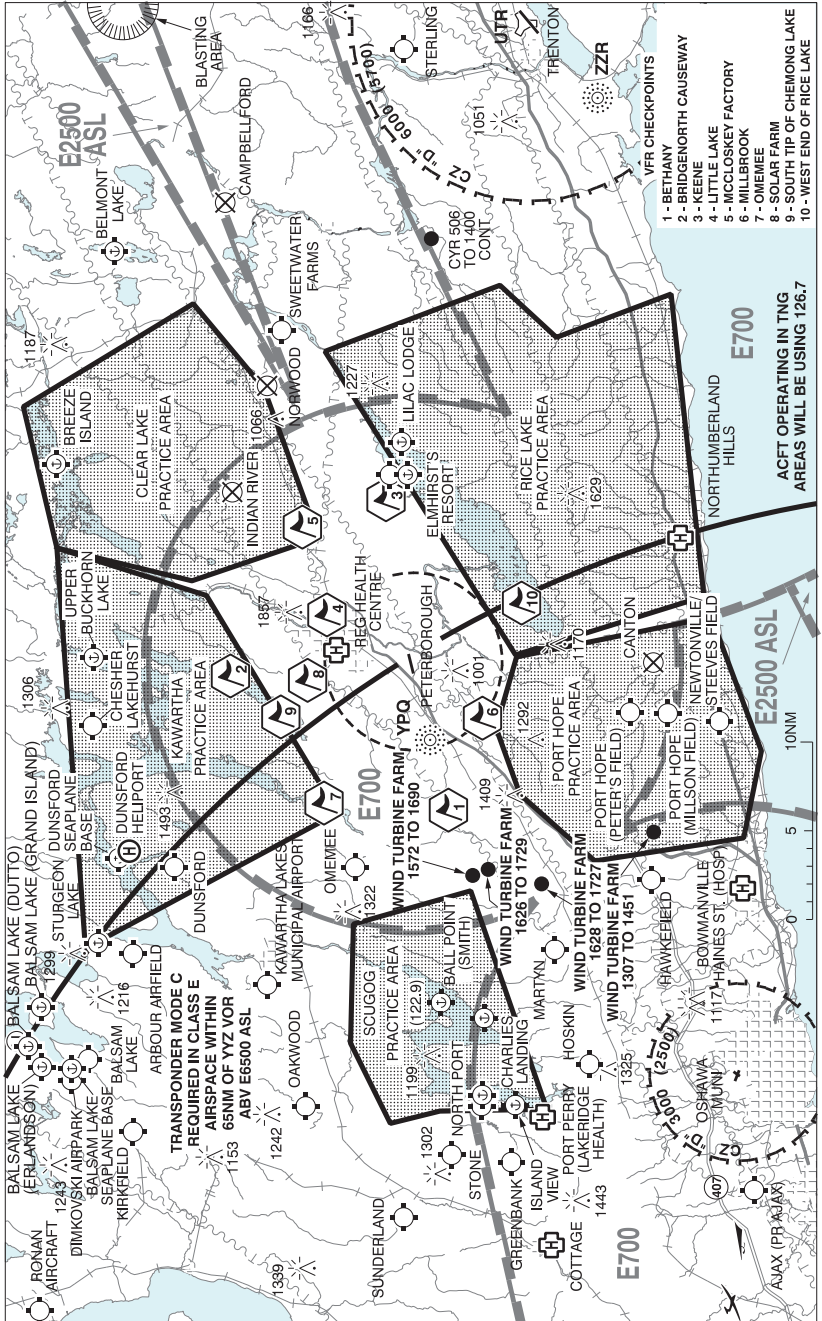
## ONTARIO

## AERODROME / FACILITY DIRECTORY

**PETERBOROUGH (REG HEALTH CENTRE) ON (Heli)****CNU3**

<b>REF</b>	N44 18 02 W78 20 45 Adj W 12°W UTC-5(4) Elev 738' A5000	
<b>OPR</b>	Peterborough Regional Health Centre 705-743-2121 Cert PPR	
<b>FLT PLN</b>	<b>FIC</b> London 866-WXBRIEF (Toll free within Canada) or 866-541-4104 (Toll free within Canada & USA)	
<b>HELI DATA</b>	<b>RCR</b> FATO/TLOF 90' dia CONC Safety Area 120' dia Max heli overall length 60' Opr	
<b>LIGHTING</b>	<b>RY(LO)</b> Green <b>RF(FL)</b> ARCAL- 122.025 key mic 7 times to activate	
<b>COMM</b>	<b>MF</b> UNICOM ltd hrs O/T tfc 122.025 5NM centred on Peterborough A/D 4.3NM SSW 3600 ASL (CAR 602.98)	
<b>PRO</b>	Arr/dep 153° to 183° fr heli, slope 8% (H3) day/night use.	
<b>CAUTION</b>	Lgtd and painted twr 891 ASL (154 AGL) aprx 350' W of A/D	

PETERBOROUGH VFR TERMINAL PROCEDURES CHART



## ONTARIO

## AERODROME / FACILITY DIRECTORY

**PETERBOROUGH VFR TERMINAL PROCEDURES CHART (Cont'd)**

<b>NAME</b>	<b>IDENT</b>	<b>LAT/LONG</b>
BETHANY	VCBNY	N44° 10' 57" W078° 34' 03"
BRIDGENORTH CAUSEWAY	VCBGN	N44° 23' 14" W078° 23' 33"
KEENE	VCKNE	N44° 14' 28" W078° 09' 44"
LITTLE LAKE	VCLTL	N44° 17' 48" W078° 18' 45"
MCCLOSKEY FACTORY	VCLSK	N44° 19' 11" W078° 11' 52"
MILLBROOK	VCMLB	N44° 09' 02" W078° 26' 51"
OMEMEE	VCMEE	N44° 17' 57" W078° 33' 31"
SOLAR FARM	VCSOL	N44° 18' 54" W078° 23' 54"
SOUTH TIP OF CHEMONG LAKE	VCHMG	N44° 20' 24" W078° 26' 46"
WEST END OF RICE LAKE	VCRCE	N44° 06' 50" W078° 17' 51"