
FLIGHT PLAN & SITE SURVEY

C 58-5779 PRINCE GEORGE AEROMODELERS- AIMHI GYM

July 10, 2026



IMPORTANT NOTICE

Please ensure you have received all required authorizations prior to flight. This Site Survey was created using RPAS Wilco. The user accepts all responsibility for the accuracy of the information.

Terms & Conditions: rpaswilco.com/#tnc

Mission Information

C 58-5779 PRINCE GEORGE AEROMODELERS- AIMHI GYM

FLIGHT DETAILS

Reference No:	MAAC-58-5779
Project Name:	PRINCE GEORGE AEROMODELERS
Pilot Name:	MAAC
Pilot Certificate:	
Mission Type:	VLOS
Flight Start:	July 10, 2026 10:13 AM
Flight End:	July 10, 2026 11:13 AM

LOCATION DETAILS

Flight Address:	AIMHI GYM
Latitude:	53° 54' 56.97" N (53.916)
Longitude:	122° 48' 5.63" W (-122.802)
Field Elevation:	1985 ft MSL
Altitude / Radius:	400 ft / 926 m (0.5 nm)
Classification:	CONTROLLED
FIR / Contact:	CZVR / 604-586-4500

NOTES

Your flight is in controlled airspace.
If your RPAS is > 250g, please obtain RPAS Flight Authorization using the NavDrone app or by contacting NavCanada. (CARs 901.71)

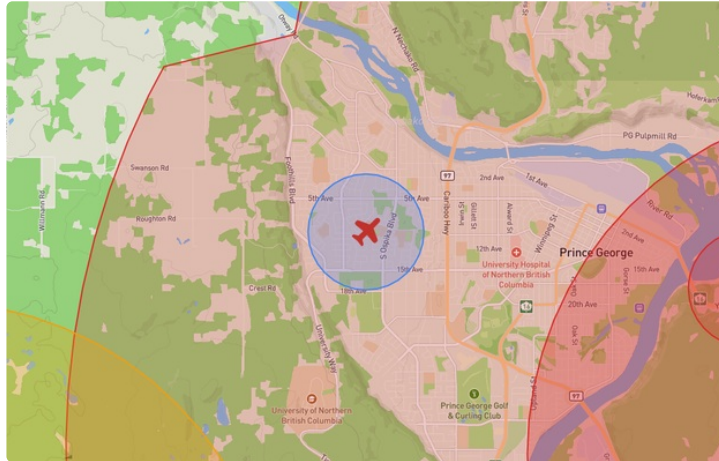
REPORT CONTENTS

Site Survey • Obstacles (if available) • Nearby Aerodromes • Canadian Aviation Regulations • GFA • Aerodrome Supplements • METAR & TAF • NOTAMS • CFS





Flight Map & MODEL Details

MISSION LOCATION SURVEY

FLIGHT AREA MAP



MISSION LOCATION DETAILS

ROLE	LATITUDE	LONGITUDE
 MODEL	53° 54' 56.97" N 53.916	122° 48' 5.63" W -122.802
 Pilot		
 Payload Op.		
 Observer		

Airspace Classification

MISSION LOCATION SURVEY

AIRSPACE MAP



OVERLYING AIRSPACES

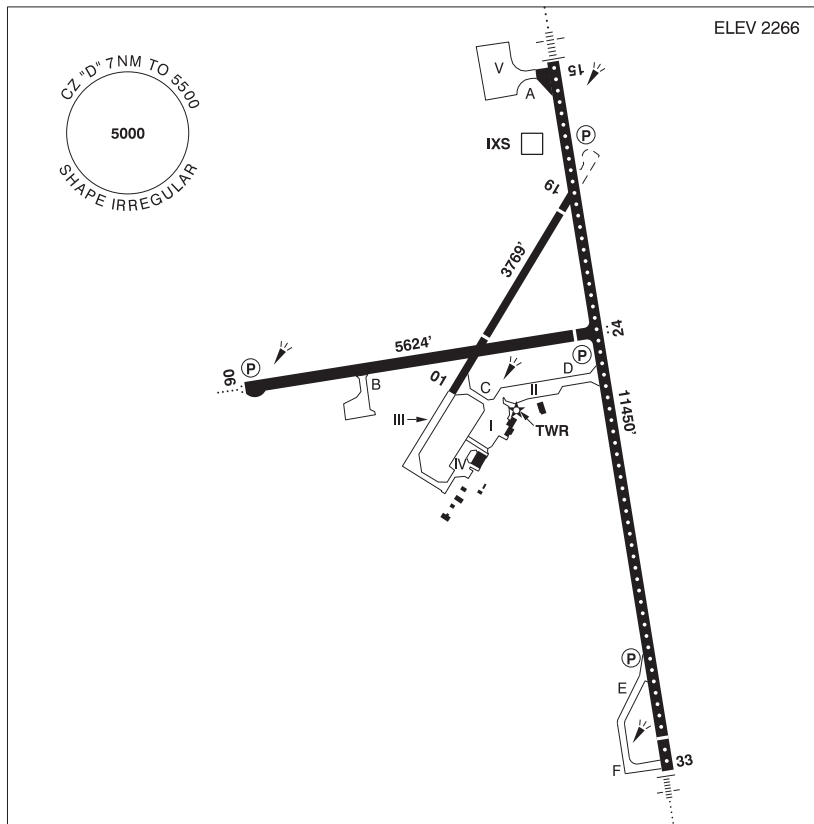
Class	Name	Floor	Ceiling
D	Prince George, BC [CZ]	SFC	5500MSL
E	Prince George, BC [TA]	700AGL	18000MSL

NEAREST AERODROMES & DISTANCE FROM OPERATION

PRINCE GEORGE (CYXS - AERODROME - Cert)	Lat: 53.884	Long: -122.678	8.87KM	4.789NM	SE
Operator: PRINCE GEORGE AIRPORT AUTHORITY; PHONE: 250-963-2400, POST: UNKNOWN FIR Contact: 604-586-4500					
BEAVERLEY (CBA8 - AERODROME - Reg)	Lat: 53.856	Long: -122.907	9.65KM	5.211NM	SW
Operator: CYRS RECREATIONAL AVIATION PARK; PHONE: 250-617-8228, PHONE: 250-964-8228, POST: UNKNOWN FIR Contact: 604-586-4500					

PRINCE GEORGE BC

CYXS



REF	N53 53 03 W122 40 39 2.8SE 18°E (2014) UTC-8(7) Elev 2266' A5014 LO1 HI3 CAP
OPR	Prince George Airport Authority 250-963-2400 Cert
PF	A-1,2,3,6 C-4,5
CUST	AOE/30 (120 with staged off-loading) 888-226-7277 1630-0030Z†
FLT PLN	<p>FIC Kamloops 866-WXBRIEF (Toll free within Canada) or 866-541-4101 (Toll free within Canada & USA)</p> <p>WX METAR AUTO H24 (see COMM). TAF H24, issue times: 01, 07, 13, 19Z. WxCam</p>
SERVICES	<p>FUEL 100LL, JA-1 (FSII avbl), F-34, JB, HPR</p> <p>OIL All</p> <p>S 1,2,3,4</p> <p>ARFF DESIGNATED CAT 7 1400-0730Z† O/T call out chg, 2 hr PN</p> <p>PVT ADV Jetmark 129.4 250-961-8124</p> <p>MIL CON Executive Aviation 250-961-8124</p>

BRITISH COLUMBIA

AERODROME / FACILITY DIRECTORY

PRINCE GEORGE BC (Cont'd)

CYXS

RWY DATA	Rwy 15(153°)/33(333°) 11450x150 ASPH Thld 33 displ 500' Rwy 15 down 0.3% Rwy 06(063°)/24(243°) 5624x150 ASPH Thld 24 displ 401' Rwy 24 up 0.87% Rwy 01(013°)/19(193°) 3769x75 ASPH Thld 01 displ 984'. Thld 19 displ 373'
RWY CERT	Rwy 15 RVR 1200(1/4sm)/Rwy 33 RVR 1200(1/4sm) AGN V Rwy 06/24 AGN IIIB Rwy 01/19 AGN III
TWY CERT	Twy: B AGN IIIB Twy: C, D AGN IV
RCR	Opr 1300-0730Z†. Rwy 01/19 rstd to 12,500 lbs for ldg & tkof day only. Win maint 1300-0730Z† O/T 2hr PN cost recovery. CRFI, PCN.
LIGHTING	06-AO(TE ME) P2, 24-AS(TE ME) P2, 15-AN(TE HI CL) P3, 33-AN(TE HI CL) P2 PAPI limitation/restriction. PAPI Rwy 24 to be used only within 5NM of thld ARCAL-118.3 type K when twr clsd Rwys 01/19 lit as twy
COMM	
RCO	Williams Lake rdo 118.3 (RAAS) 05-14Z† Pacific rdo 123.55 (FISE) 126.7 (bcst)
ATIS	128.725 14-05Z†
GND	121.9 14-05Z†
TWR	118.3 (V) 14 -05Z† (emerg only 250-963-9177)
MF	Williams Lake rdo 118.3 05-14Z† CZ shape irregular 7NM 5500 ASL (CAR 602.98) (emerg only 250-989-4415)
PAL	Vancouver Ctr 133.8
AWOS	128.725 05-14Z†
NAV	
VOR/DME	YXS 112.3 Ch 70 N53 53 39 W122 27 20 (4076')
DME	IXS 109.5 Ch 32 N53 53 46 W122 40 19 (2260')
ILS	IXS 109.5 (Rwy 15) RVR
PRO	Rgt hand circuits Rwys 19, 24 & 33 (CAR 602.96).
CAUTION	Tall vehicles crossing 910' N thld Rwy 15. Extv bird activity dur spring & fall. Parajumping activity vic Beaverley A/D 8NM SW to 12,500 ASL by NOTAM, monitor 122.1. Radiosonde balloon launches with an ascent rate of 1000 ft/min daily between the hours of 1115-1345Z & 2315-0145Z. Hi terrain reduces operational length of Rwy 24 PAPI.

BRITISH COLUMBIA

AERODROME / FACILITY DIRECTORY

BEAVERLEY BC

CBA8

REF	N53 51 20 W122 54 27 2.5N 19°E (2012) UTC-8(7) Elev 2420' A5014	
OPR	Cyr's Recreational Avn Park 250-964-8228 or 250-617-8228 Reg	
PF	B-1 C-2 D-3,4,5,6	
FLT PLN	FIC Kamloops 866-WXBRIEF (Toll free within Canada) or 866-541-4101 (Toll free within Canada & USA)	
SERVICES	S 2,4,5	
RWY DATA	Rwy 07(071°)/25(251°) 2461x50 gravel RCR Opr Jun-Sep No win maint. Rwy soft in spring & fall.	
COMM	ATF tfc 122.8 2NM 4000 ASL	
CAUTION	Parajumping in area to 12,500 ASL by NOTAM. 80' trees 100' S rwy. Wildlife ocsl on rwy.	