

---

# FLIGHT PLAN & SITE SURVEY

---

K 321-5801 HUB CITY R/C CLUB- Tommy Douglas Collegiate

July 10, 2026



**IMPORTANT NOTICE**

Please ensure you have received all required authorizations prior to flight. This Site Survey was created using RPAS Wilco. The user accepts all responsibility for the accuracy of the information.

Terms & Conditions: [rpaswilco.com/#tnc](https://rpaswilco.com/#tnc)

# Mission Information

K 321-5801 HUB CITY R/C CLUB- TOMMY DOUGLAS COLLEGIATE

## FLIGHT DETAILS

|                    |                               |
|--------------------|-------------------------------|
| Reference No:      | <b>MAAC-321-5801</b>          |
| Project Name:      | <b>HUB CITY R/C CLUB</b>      |
| Pilot Name:        | <b>MAAC</b>                   |
| Pilot Certificate: |                               |
| Mission Type:      | <b>VLOS</b>                   |
| Flight Start:      | <b>July 10, 2026 11:13 AM</b> |
| Flight End:        | <b>July 10, 2026 12:13 PM</b> |

## LOCATION DETAILS

|                    |                                       |
|--------------------|---------------------------------------|
| Flight Address:    | <b>Tommy Douglas Collegiate</b>       |
| Latitude:          | <b>52° 7' 42.76" N ( 52.129 )</b>     |
| Longitude:         | <b>106° 44' 50.06" W ( -106.747 )</b> |
| Field Elevation:   | <b>1647 ft MSL</b>                    |
| Altitude / Radius: | <b>400 ft / 926 m ( 0.5 nm )</b>      |
| Classification:    | <b>CONTROLLED</b>                     |
| FIR / Contact:     | <b>CZWG / 204-983-8338</b>            |

### NOTES

Your flight is in controlled airspace.  
If your RPAS is > 250g, please obtain RPAS Flight Authorization using the NavDrone app or by contacting NavCanada. (CARs 901.71)

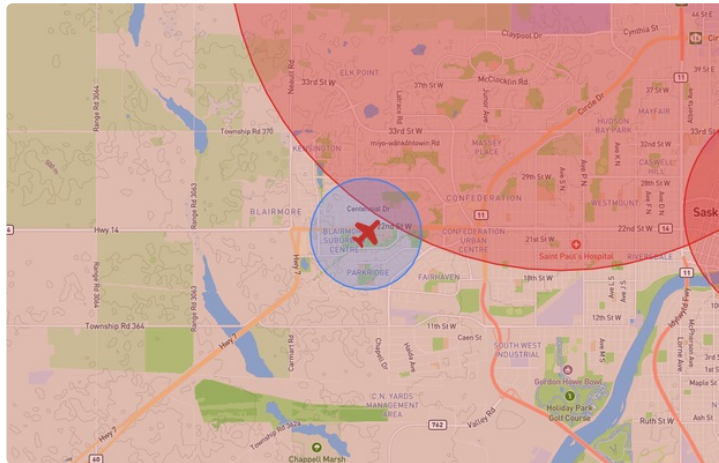
## REPORT CONTENTS

Site Survey • Obstacles (if available) • Nearby Aerodromes • Canadian Aviation Regulations • GFA • Aerodrome Supplements • METAR & TAF • NOTAMS • CFS





# Flight Map & MODEL Details

MISSION LOCATION SURVEY

## FLIGHT AREA MAP



## MISSION LOCATION DETAILS

| ROLE  | LATITUDE                  | LONGITUDE                     |
|---|---------------------------|-------------------------------|
|  MODEL        | 52° 7' 42.76" N<br>52.129 | 106° 44' 50.06" W<br>-106.747 |
|  Pilot        |                           |                               |
|  Payload Op. |                           |                               |
|  Observer   |                           |                               |

# Airspace Classification

MISSION LOCATION SURVEY

## AIRSPACE MAP



## OVERLYING AIRSPACES

| Class | Name  | Floor  | Ceiling  |
|-------|---|--------|----------|
| C     | Saskatoon/John G. Diefenbaker Intl, SK [CZ] | SFC    | 5000MSL  |
| E     | Saskatoon/John G. Diefenbaker Intl, SK [TA] | 700AGL | 18000MSL |

## NEAREST AERODROMES & DISTANCE FROM OPERATION

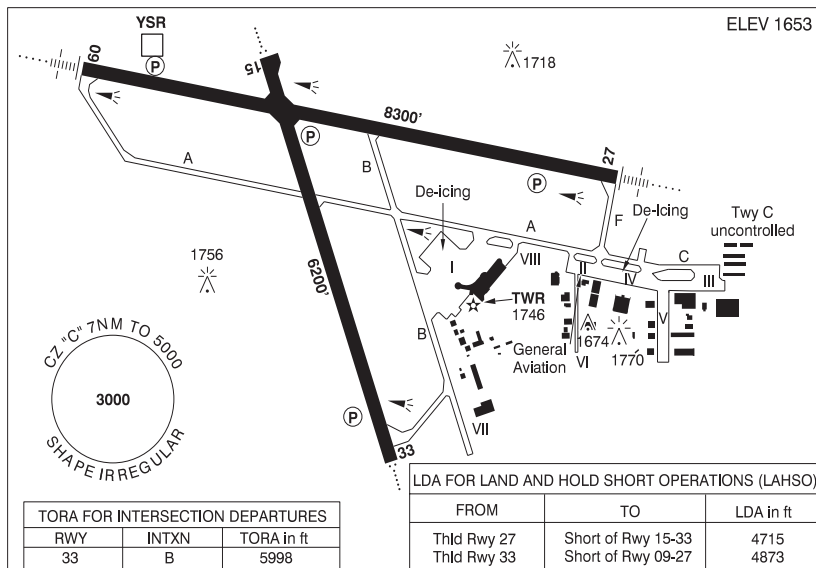
|   |             |                |          |         |    |
|---|-------------|----------------|----------|---------|----|
| JOHN G. DIEFENBAKER INTL (CYXE - AERODROME - Cert)  | Lat: 52.173 | Long: -106.7   | 5.942KM  | 3.208NM | NE |
| <b>Operator:</b> SASKATOON AIRPORT AUTHORITY: PHONE: 306-975-4013, POST: UNKNOWN <b>FIR Contact:</b> 204-983-8338           |             |                |          |         |    |
| SASKATOON (JIM PATTISON CHILDREN'S HOSPITAL) (CJP4 - HELIPORT - Cert)   | Lat: 52.132 | Long: -106.643 | 7.159KM  | 3.866NM | E  |
| <b>Operator:</b> SASKATCHEWAN HEALTH AUTHORITY: PHONE: 306-655-0683, POST: UNKNOWN <b>FIR Contact:</b> 204-983-8338         |             |                |          |         |    |
| RICHTER FIELD (CRF5 - AERODROME - Reg)  | Lat: 52.28  | Long: -106.684 | 17.415KM | 9.403NM | N  |
| <b>Operator:</b> FRANK RICHTER: PHONE: 306-384-3975, POST: Box 1514 Martensville SK S0K2T0 <b>FIR Contact:</b> 204-983-8338 |             |                |          |         |    |

**SASKATCHEWAN**

**AERODROME / FACILITY DIRECTORY**

**SASKATOON / JOHN G. DIFENBAKER INTL SK**

**CYXE**



|                 |  |
|-----------------|--|
| <b>REF</b>      | N52 10 24 W106 41 59 3NW 11°E (2013) UTC-6 Elev 1653' A5006 A5015 LO2 HI3 T1 CAP   |
| <b>OPR</b>      | Saskatoon Aprt Authority 306-975-4013<br>H24 Cert  |
| <b>PF</b>       | A-1,2,3,6,7 avbl 1230-0630Z C-4,5  |
| <b>CUST</b>     | AOE/200 (300 with staged off-loading) 888-226-7277 14-06Z May 6-Nov 5, 14-06Z Nov 6-Dec 3 O/T O/R, H24 Dec 4-May 5   |
| <b>FLT PLN</b>  | <p><b>FIG</b> Edmonton 866-WXBRIEF (Toll free within Canada) or 866-541-4102 (Toll free within Canada &amp; USA)</p> <p><b>WX</b> METAR H24.<br/>TAF H24, issue times: 00, 06, 12, 18Z.</p> <p><b>DUAT</b> Saskatoon Aerocentre.</p>   |
| <b>SERVICES</b> | Call out chg may be levied for one or more svcs.<br><p><b>FUEL</b> 100LL, JA-1</p> <p><b>OIL</b> All</p> <p><b>S</b> 1,2,3,4,5,6</p> <p><b>ARFF</b> DESIGNATED CAT 6 (CAT 7 30 min PN). Discrete emerg freq 122.675</p> <p><b>SUP FL</b> LHOX D &amp; A-ice</p> <p><b>JASU</b> CE16</p> <p><b>PVT ADV</b> Kreos Aviation/Shell 122.95 12-04Z; Lockhart Aviation/World Fuel 122.85 12-04Z</p> <p><b>MIL CON</b> Depmar Flight Holdings Inc (Shell) 306-931-8552</p> |

## SASKATCHEWAN

## AERODROME / FACILITY DIRECTORY

## SASKATOON / JOHN G. DIEFENBAKER INTL SK (Cont'd)

CYXE

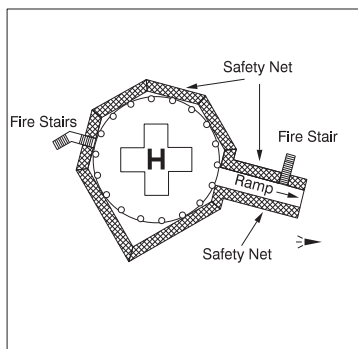
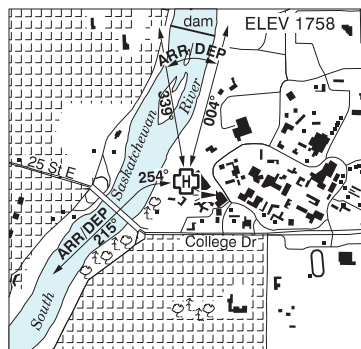
|                 |  |
|-----------------|--|
| <b>RWY DATA</b> | Rwy 09(090°)/27(270°) 8300x148 ASPH<br>Rwy 15(150°)/33(330°) 6200x148 ASPH<br>RESA: All Rwys 492'  |
| <b>RWY CERT</b> | Rwy 09 RVR 1200(1/4sm)/Rwy 27 RVR 1200(1/4sm) AGN IIIB<br>Rwy 15 RVR 1200(1/4sm)/Rwy 33 RVR 1200(1/4sm) AGN IIIB   |
| <b>TWY</b>      | Twy A and Twy C discretionary oversteer rqrd for all acft at intxn of Twy A and Apron II, intxn of Twy A/C and Apron IV, intxn of Twy C and Apron III. Twy C uncontrolled. Twy B adj to Apron I uncontrolled.  |
| <b>APRON</b>    | A310, A330, B757 & B767: 120° turns at intxn Twy B & A proh.<br>Prkg Apron I rstd to scheduled & non-scheduled airline tfc. 2 hr PN for gate assignment on Apron I, ctc opr. All other itinerant acft must park on Apron II.<br>Apron VIII rstd to scheduled & non-scheduled airline tfc. 2 hr PN for gate assignment on Apron VIII, ctc opr.<br>No taxiing btwn Apron I and Apron VIII.<br>Apron I, VI, VIII: Heli ops proh.<br>Apron V: Max heli wt 2500lbs.   |
| <b>RCR</b>      | Opr or 306-975-4328 CRFI, PCN  |
| <b>LIGHTING</b> | 09-AN(TE HI) P3, 27-AN(TE HI) P3, 15-AO(TE HI) P2, 33-AO(TE HI) P2 3.1°. Nominal touchdown pt P2 Rwy 15 aprx 1200' S of thld Rwy 15.   |
| <b>COMM</b>     |  |
| <b>RADIO</b>    | Saskatoon 118.3 PTC avbl (E) 0445-1200Z Mon-Fri Mar 09-Oct 31, 0445-1245Z Sat-Sun Mar 09-Oct 31, 0445-1245Z Nov 1- Mar 8 (emerg only 306-665-4248)   |
| <b>RCO</b>      | Edmonton rdo 122.375 (FISE) 126.7 (bcst)   |
| <b>ATIS</b>     | 128.4  |
| <b>GND</b>      | Saskatoon 121.9 1200-0445Z Mon-Fri Mar 09-Oct 31, 1245-0445Z Sat-Sun Mar 09-Oct 31, 1245-0445Z Nov 1- Mar 8  |
| <b>TWR</b>      | Saskatoon 118.3 (E) 1200-0445Z Mon-Fri Mar 09-Oct 31, 1245-0445Z Sat-Sun Mar 09-Oct 31, 1245-0445Z Nov 1- Mar 8 (emerg only 306-665-4249)  |
| <b>MF</b>       | rdo 118.3 0445-1200Z Mon-Fri Mar 09-Oct 31, 0445-1245Z Sat-Sun Mar 09-Oct 31, 0445-1245Z Nov 1- Mar 8 7NM shape irregular 5000 ASL (CAR 602.98)  |
| <b>ARR</b>      | Winnipeg Ctr 119.9   |
| <b>DEP</b>      | Winnipeg Ctr 119.9   |
| <b>PAL</b>      | Winnipeg Ctr 134.325   |
| <b>NAV</b>      |  |
| <b>DME</b>      | SASKATOON YSR 114.7 Ch 94 N52 10 45 W106 42 49 (1673')   |
| <b>ILS</b>      | IST 109.9 (Rwy 09) RVR .   |
| <b>PRO</b>      | Rgt hand circuits Rwys 15 & 27 (CAR 602.96).<br><b>VFR ARR/DEP ROUTES:</b> VFR arr/dep routes are intended primarily for tng acft and may be assigned by ATC, as required, for entry to or exit fr the CYXE CZ. See VTPC. Langham VFR Route in close proximity to RNAV Apch Rwy 15.<br><b>TRAINING AREAS:</b> See VTPC.<br><b>REDUCED VISIBILITY PROCEDURES (RVR less than 2600 to 1200 ft):</b> See CAP.<br><b>ATS PPR REQUIREMENTS:</b> Ctc Winnipeg ACC 204-984-5979 for the following;<br>- IFR tng and photo survey within Saskatoon Class E Transponder Airspace<br><b>HELIPRO:</b> Aprons II, III, IV and V - heli tkof/ldg not auth. Ground and hover taxi only. |
| <b>CAUTION</b>  | Random radiosonde &/or heavy balloon launches aprx 15 NM SW, at abandoned A/D Vanscoy. Ocsl parajump activity within 1NM of Martensville (N52 16 50 W106 41 08, 6.6NM N apt), daylight hrs activated by NOTAM. Max alt 11,600 ASL.   |

## SASKATCHEWAN

## AERODROME / FACILITY DIRECTORY

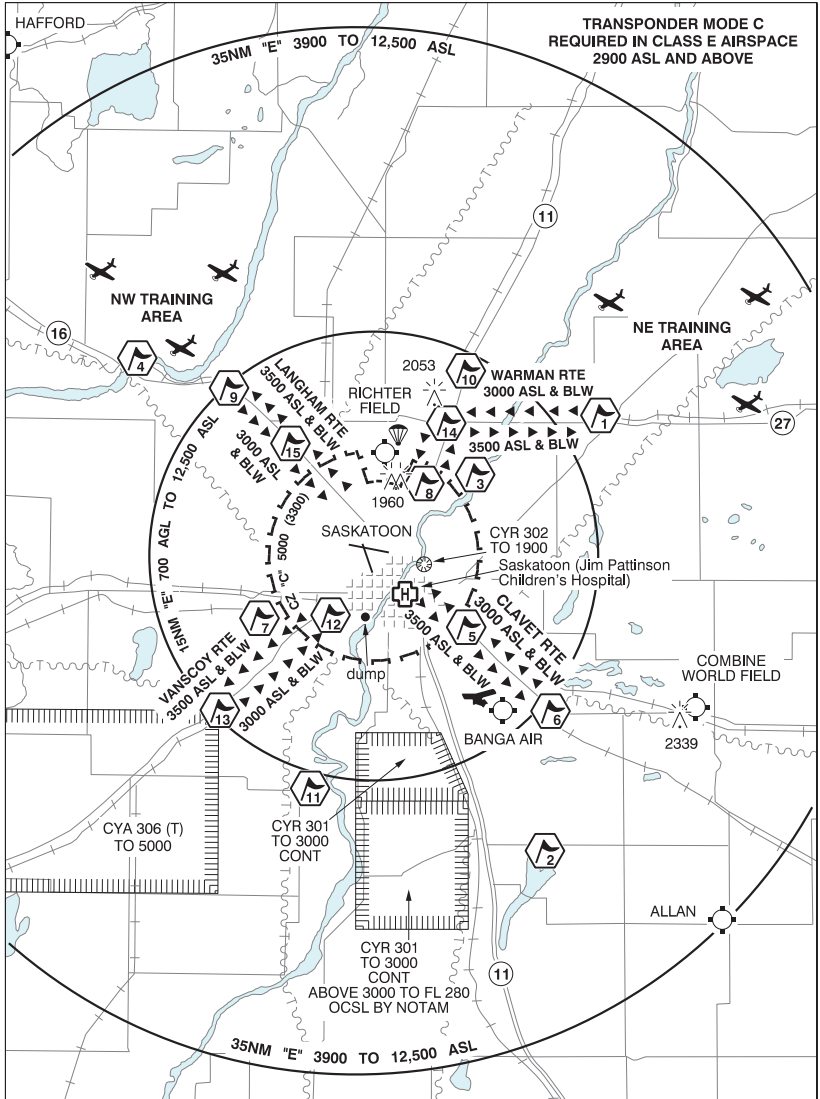
## SASKATOON (JIM PATTISON CHILDREN'S HOSPITAL) SK (Heli)

CJP4



|                  |  |
|------------------|--|
| <b>REF</b>       | N52 07 55 W106 38 33 Adj E 11°E (2013) UTC-6 Elev 1758' A5006 A5015  |
| <b>OPR</b>       | Saskatchewan Health Authority 306-655-0683 Cert PPR  |
| <b>PF</b>        | A-1,2,4,7,8 C-3,5,6  |
| <b>FLT PLN</b>   |  |
| <b>FIG</b>       | Edmonton 866-WXBRIEF (Toll free within Canada) or 866-541-4102 (Toll free within Canada & USA)   |
| <b>HELI DATA</b> | FATO 86' dia non-supporting TLOF 57' dia CONC<br>Safety Area 115' dia 17,000 lbs Max heli overall length 57.4'   |
| <b>RCR</b>       | Support services 306-844-1601  |
| <b>LIGHTING</b>  | RY (LO) yellow LED   |
| <b>COMM</b>      |  |
| <b>RADIO</b>     | Saskatoon 118.3 PTC avbl (E) 0445-1200Z Mon-Fri Mar 09-Oct 31, 0445-1245Z Sat-Sun Mar 09-Oct 31, 0445-1245Z Nov 1-Mar 8 (emerg only 306-665-4248)  |
| <b>RCO</b>       | Edmonton rdo 122.375 (FISE) 126.7 (bcst)   |
| <b>TWR</b>       | Saskatoon 118.3 (E) 1200-0445Z Mon-Fri Mar 09-Oct 31, 1245-0445Z Sat-Sun Mar 09-Oct 31, 1245-0445Z Nov 1-Mar 8 (emerg only 306-665-4249)   |
| <b>MF</b>        | rdo 118.3 0445-1200Z Mon-Fri Mar 09-Oct 31, 0445-1245Z Sat-Sun Mar 09-Oct 31, 0445-1245Z Nov 1- Mar 8 7NM shape irregular centred on Saskatoon/John G. Diefenbaker Intl A/D 3.2NM NW 5000 ASL (CAR 602.98) |
| <b>PRO</b>       | Arr/dep 339° to 004° fr heli, slope 8% (H3), day/night use. Arr/dep 254° to 215° curved fr heli, slope 8% (H3), day/night use.   |
| <b>CAUTION</b>   | Lgtd hosp elevator penthouse aprx 69' W of heli. Lgtd hosp signage on the N bldg wall BLW heli elev.   |

**SASKATOON VFR TERMINAL PROCEDURES CHART**



VFR CHECKPOINTS

- |                 |                  |
|-----------------|------------------|
| 1 ABERDEEN      | 8 ELEVATOR       |
| 2 BLACKSTRAP    | 9 LANGHAM        |
| 3 BLUFFS        | 10 OSLER         |
| 4 BORDEN BRIDGE | 11 PIKE LAKE     |
| 5 COSTCO        | 12 RAILYARD      |
| 6 CLAVET        | 13 VANSKOY       |
| 7 CORY MINE     | 14 WARMAN        |
|                 | 15 WEIGH STATION |



**SASKATCHEWAN**

AERODROME / FACILITY DIRECTORY

**SASKATOON VFR TERMINAL PROCEDURES CHART (Cont'd)**

| <b>NAME</b>   | <b>IDENT</b> | <b>LAT/LONG</b>            |
|---------------|--------------|----------------------------|
| ABERDEEN      | VCABD        | N52° 19' 33" W106° 17' 12" |
| BLACKSTRAP    | VCBTP        | N51° 50' 28" W106° 23' 17" |
| BLUFFS        | VCBFS        | N52° 15' 40" W106° 31' 11" |
| BORDEN BRIDGE | VCBOR        | N52° 22' 24" W107° 09' 00" |
| COSTCO        | VCCST        | N52° 05' 28" W106° 31' 44" |
| CLAVET        | VCCLT        | N51° 59' 51" W106° 22' 38" |
| CORY MINE     | VCCRM        | N52° 05' 19" W106° 52' 21" |
| ELEVATOR      | VCEVT        | N52° 15' 11" W106° 36' 40" |
| LANGHAM       | VCLGM        | N52° 21' 28" W106° 57' 41" |
| OSLER         | VCOSL        | N52° 22' 36" W106° 31' 56" |
| PIKE LAKE     | VCPIK        | N51° 54' 46" W106° 48' 39" |
| RAILYARD      | VCRLD        | N52° 06' 22" W106° 46' 33" |
| VANSCOY       | VCVSY        | N52° 00' 02" W106° 58' 27" |
| WARMAN        | VCWMN        | N52° 19' 07" W106° 33' 59" |
| WEIGH STATION | VCWST        | N52° 17' 49" W106° 51' 01" |

**TRAINING AREAS**

NW Training Area – restricted to area north of Hwy 16 and west of Range Road 3071 (Schulz Rd).  
 NE Training Area – restricted to north of Hwy 27 and east of Hwy 785.

**SASKATCHEWAN**

**AERODROME / FACILITY DIRECTORY**

**SASKATOON / RICHTER FIELD SK**

**CRF5**

|                 |   |
|-----------------|---|
| <b>REF</b>      | N52 16 49 W106 41 02 6N<br>11°E (2013) UTC-6 Elev 1700'<br>A5006 A5015  |
| <b>OPR</b>      | Frank Richter 306-384-3975 Reg<br>PPR   |
| <b>FLT PLN</b>  | <b>FIC</b> Edmonton 866-WXBRIEF (Toll free<br>within Canada) or 866-541-4102 (Toll<br>free within Canada & USA) |
| <b>PF</b>       | C-1,2,4,5   |
| <b>SERVICES</b> | <b>FUEL</b> 100LL<br><b>S</b> 1,4,5   |
| <b>RWY DATA</b> | Rwy 08(079°)/26(259°) 3000x75<br>GRASS/GRVL/CLAY, Rwy 08 100x25 CONC pad at thld                                |
| <b>RCR</b>      | Opr Ltd win maint   |
| <b>COMM</b>     | <b>ATF</b> ftc 123.2 5NM 4700 ASL excluding portion within CYXE CZ  |
| <b>PRO</b>      | Rgt hand circuits Rwy 08 (CAR 602.96)   |

