
FLIGHT PLAN & SITE SURVEY

D 371-5818 WINNIPEG HEADINGLEY AERO MODELERS-
PRAIRIE DOG CENTRAL OUTDOOR STATIC DISPLAY

July 10, 2026



IMPORTANT NOTICE

Please ensure you have received all required authorizations prior to flight. This Site Survey was created using RPAS Wilco. The user accepts all responsibility for the accuracy of the information.

Terms & Conditions: rpaswilco.com/#tnc

Mission Information

D 371-5818 WINNIPEG HEADINGLEY AERO MODELERS- PRAIRIE DOG CENTRAL OUTDOOR STATIC DISPLAY

FLIGHT DETAILS

Reference No:	MAAC-371-5818
Project Name:	WINNIPEG HEADINGLEY AERO MODELERS
Pilot Name:	MAAC
Pilot Certificate:	
Mission Type:	VLOS
Flight Start:	July 10, 2026 12:13 PM
Flight End:	July 10, 2026 01:13 PM

LOCATION DETAILS

Flight Address:	PRAIRIE DOG CENTRAL OUTDOOR STATIC DISPLAY
Latitude:	49° 57' 6.50" N (49.952)
Longitude:	97° 16' 12.09" W (-97.27)
Field Elevation:	791 ft MSL
Altitude / Radius:	400 ft / 926 m (0.5 nm)
Classification:	DND
FIR / Contact:	CZWG / 204-983-8338

NOTES

Your flight is within 3NM of a military aerodrome.
Please obtain SFOC-RPAS from Transport Canada. (CARs 903.01)

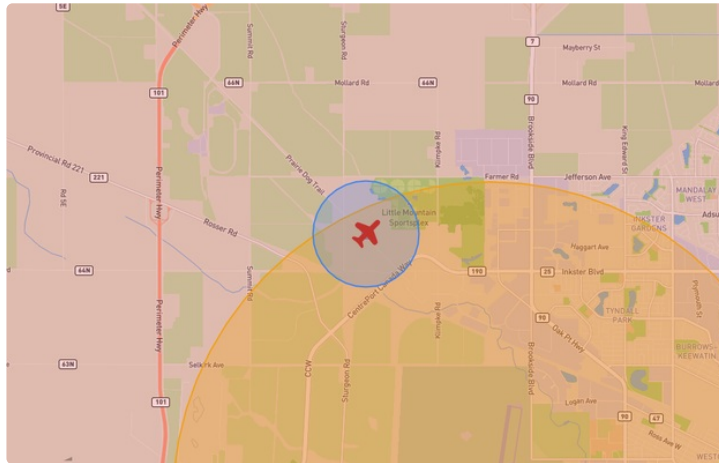
REPORT CONTENTS

Site Survey • Obstacles (if available) • Nearby Aerodromes • Canadian Aviation Regulations • GFA • Aerodrome Supplements • METAR & TAF • NOTAMs • CFS





Flight Map & MODEL Details

MISSION LOCATION SURVEY

FLIGHT AREA MAP



MISSION LOCATION DETAILS

ROLE	LATITUDE	LONGITUDE
 MODEL	49° 57' 6.50" N 49.952	97° 16' 12.09" W -97.27
 Pilot		
 Payload Op.		
 Observer		

Airspace Classification

MISSION LOCATION SURVEY

AIRSPACE MAP



OVERLYING AIRSPACES

Class	Name	Floor	Ceiling
C	Winnipeg/James Armstrong Richardson Intl, MB [CZ]	SFC	3000MSL
E	Winnipeg, MB [TA]	700AGL	18000MSL

NEAREST AERODROMES & DISTANCE FROM OPERATION

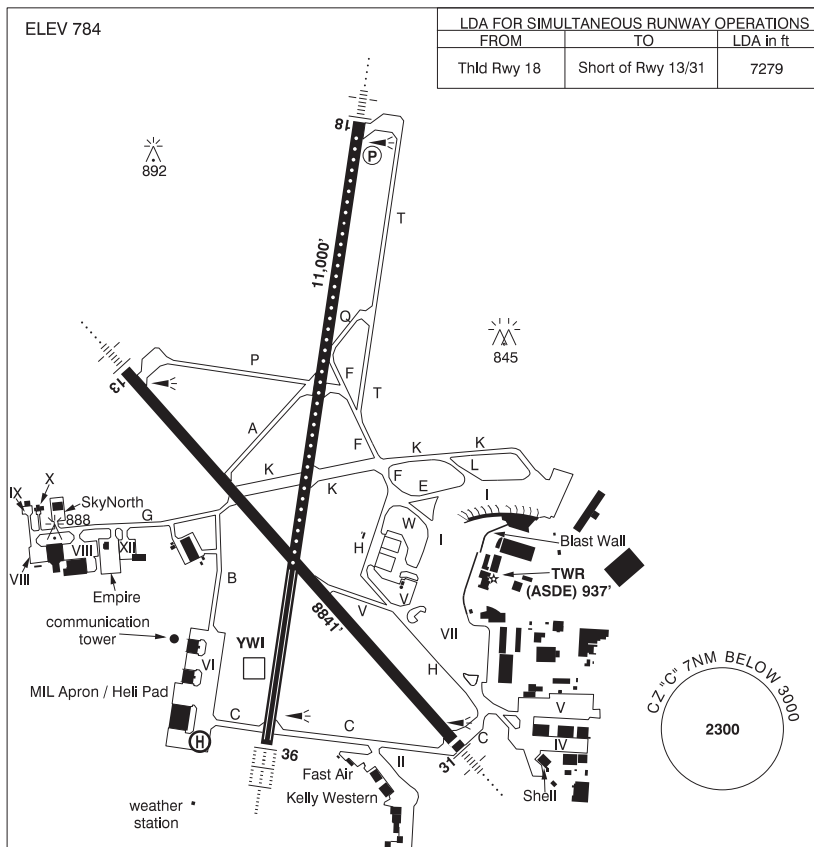
JAMES ARMSTRONG RICHARDSON INTL (CYWG - AERODROME - DND)	Lat: 49.91	Long: -97.24	5.158KM	2.785NM	SE
Operator: WINNIPEG AIRPORTS AUTHORITY (DEPARTMENT OF NATIONAL DEFENCE): PHONE: 204-987-9798, POST: UNKNOWN FIR Contact: 204-983-8338					
WINNIPEG (HEALTH SCIENCES CENTRE) (CWH7 - HELIPORT - Reg)	Lat: 49.904	Long: -97.156	9.707KM	5.241NM	SE
Operator: WINNIPEG REGIONAL HEALTH AUTHORITY: PHONE: 204-787-2735, POST: 820 Sherbrook Street Winnipeg, MB R3A 1R9 FIR Contact: 204-983-8338					
WINNIPEG (CITY OF WINNIPEG) (CWG2 - HELIPORT - Cert)	Lat: 49.9	Long: -97.096	13.754KM	7.427NM	SE
Operator: CITY OF WINNIPEG: PHONE: 204-470-7800, PHONE: 204-986-4869, POST: Greg Robinson 3 Grey St. Winnipeg MB R2L1V2 FIR Contact: 204-983-8338					

MANITOBA

AERODROME / FACILITY DIRECTORY

WINNIPEG / JAMES ARMSTRONG RICHARDSON INTL MB

CYWG



REF	N49 54 36 W97 14 24 Adj W 3°E (2014) UTC-6(5) Elev 784' VTA A5007 LO4 HI4 T1 CAP OC
OPR	Winnipeg Airports Authority 204-987-9798, DND Ops 877-283-6827 H24 Cert Ldg fees
PF	A-1,2,3,6,7,8 B-4 C-5 Mil on Base Transport avbl 1330-2130Z ‡ Mon-Fri, 6 days advance notice required.
CUST	AOE 888-226-7277
FLT PLN	Pilots to open/close VFR flt plan with Edmonton rdo, FISE or by phone.
FIG	Edmonton 866-WXBRIEF (Toll free within Canada) or 866-541-4102 (Toll free within Canada & USA) (file 30 min prior ETD, see PRO)
ACC	IFR, 204-983-8337 or 888-834-3344 or flt plan by Fax at 204-983-2823 & include phone numbers where pilot can be reached prior to dep.
WX	METAR H24. TAF H24, issue times: 00, 06, 12, 18Z. Met brief for mil only. JMC 1-800-WXMETEO (996-3836) or CSN 432-2613. (See COMM)
DUAT	Fast Air; Kelly Western; Shell Aviation Winnipeg

MANITOBA

AERODROME / FACILITY DIRECTORY

WINNIPEG / JAMES ARMSTRONG RICHARDSON INTL MB (Cont'd)

CYWG

SERVICES

FUEL	100LL, F-34, JA-1 FSII (avbl), HPR
OIL	All (Mil 123, 128, 133, 148, 156)
S	1,2,3,4,5,6
ARFF	DESIGNATED CAT 7 (CAT 8 avbl with prior arrangement, ctc WAA 204-987-9798 O/T call out chg may apply) Discrete emerg freq 122.675
SUP FL	LHOX, D & A-ice H24 Oct 1-May 31, O/R 2 hr PN Jun 1-Aug 31, O/R Sep 1-30. Mil LOX, Nitrogen avbl PN via NOVA msg only.
JASU	CE12, 13, 14, 16, CA2, CEA1
MIL ADV	All tran acft require PPR thru 17 Wg Ops CSN 319-257-2700 204-833-2700 Toll Free 877-283-6827. PPR valid for ± 1 hr ETA. Tran svcg avbl 14-02Z± Mon-Fri, wknds & hols 14-21Z±. 24 hr PN wkds, 48 hr PN for wknds or hol. Non-compliance could result in delays for Mil svcg & prkg or svcg being referred to civ contractor. Mil acft emerg hg space only. 17 Wg ops will arrange D & A-ice with CDF contractor when req by aircrew. All applicable costs will be the responsibility of the aircrew home unit. Mil svcg rstd to park, start & refuelling with Aircrew Supervision exc for CC130 acft. No tow bar for CP140, CT155 & CT156 acft. Ctc Wg Ops (131.4 or 308.8) 20 min prior to ETA & before entering or exiting Mil ramp.
PVT ADV	Fast Air 123.0 204-831-7714; Kelly Western 122.85 204-948-9500; Shell Aviation Winnipeg 123.35 204-956-6172
MIL CON	Exchange Petroleum (Shell) 204-956-6172

RWY DATA

Rwy 18(185°)/36(005°) 11000x200 ASPH
 Rwy 13(135°)/31(315°) 8841x200 ASPH Thld 31 displ 140'
 RESA: 13 738'; 31 492'; 18/36 1000'

RWY CERT

Rwy 18 RVR 1200(1/4sm)/Rwy 36 RVR 600 AGN VI
 Rwy 13 RVR 1200(1/4sm)/Rwy 31 RVR 1200(1/4sm) AGN VI

TWY CERT

Twy A AGN IV
 Twy: B, G AGN V

TWY

Twy A: not avbl to acft 160,000 lbs or heavier, exc B757 & B767.
 Twy E, W: simultaneous use by acft with wingspan 171' or greater not auth.
 Twy G: Uncontrolled, ctc gnd prior to taxi fr Apron. Discretionary oversteer rqrd for acft with wingspan 171' to less than 214'.

APRON

Apron I: Ctc aprt for stand assignment. Acft shall be pushed back straight fr all bridge locations on Apron I unless otherwise auth. Acft taxiing or being towed to or fr Apron I ctc gnd ctl prior to manoeuvring.
 Apron II: not avbl to acft with wingspan 118' or greater.
 Apron IV: not avbl to acft with wingspan 171' or greater. Pvt.
 Apron V: Ctc aprt for stand assignment. Ctc gnd ctl prior to taxi or tow. Not avbl to acft with wingspan 171' or greater.
 Apron VI: Pvt
 Apron VII: Ctc aprt for stand assignment. Ctc gnd ctl prior to taxi or tow.
 Apron VIII: acft with wingspan 171' to less than 214' discretionary oversteer rqrd. Pvt.
 Apron IX, X, XII: Pvt
 Apron Empire, SkyNorth: Pvt
 Opr CRFI, PCN

RCR

LIGHTING

13-AN(TE HI), 31-AN(TE HI), 18-AN(TE HI CL) P3, 36-AL(TE HI TDZL)

COMM

RCO	Edmonton rdo 123.25 (FISE) 126.7 (bcst)
ATIS	120.2
CLNC DEL	121.3 all dep acft to ctc clnc del
GND	121.9
TWR	118.3 125.4 (V) (emerg only 204-983-6705)
ARR	119.5
DEP	121.0 (West) 119.9 (East)
VFR ADV	121.0 (West) 119.9 (East)
MIL	Base Ops 131.4 308.8

MANITOBA

AERODROME / FACILITY DIRECTORY

WINNIPEG / JAMES ARMSTRONG RICHARDSON INTL MB (Cont'd)

CYWG

NAV

DME YWI 116.7 Ch 114 N49 53 54 W97 14 35 (801')
ILS INP 109.5 (Rwy 13) RVR
 IWG 109.9 (Rwy 36) RVR
 IHV 110.3 (Rwy 31) RVR

PRO

AIRPORT: Rgt hand circuits Rwy 13 & 18 (CAR 602.96). Circuit hgt all rwys 2000 ASL.

Arrival Requirements

1. On apch, cross the FAF at 170 kt or less.
2. On visual apch, intercept final at or outside the final apch FAF for landing rwy unless otherwise authorized by ATC.

Note: Refer to NOISE ABATEMENT PROCEDURES for additional requirements.

Training Flight / Photo Block Requirements

PPR for all block air work, photo flight or training flight operating in Winnipeg TCA. Ctc Winnipeg ACC 204-984-5979 Fax 204-983-2823.

Note: Refer to NOISE ABATEMENT PROCEDURES for additional requirements.

ATS VFR REQUIREMENTS:

1. **Mode C Transponder Mandatory** - Acft operating in Winnipeg Class C CZ or TCA require a discrete transponder code which must be obtained by filing a flt plan, flt itinerary or by ctc Winnipeg ACC 204-984-5979 at least 15 min prior to entering. Acft departing CYAV may ctc CYAV Tower to obtain a discrete transponder code. Set transponder to discrete code prior to ctc ATC.
2. **VFR Circuits:** PPR. Single engine piston acft repetitive circuits not auth. Single engine piston acft single circuits not auth on weekdays, unless on a simulated IFR trng flt with approved Winnipeg TCA trng slot. Ctc Winnipeg ACC 204-984-5979

DE-ICING OPERATIONS

De-icing bays 1, 3, 4, 6 not avbl to acft with wingspan 118' or greater.

De-icing bay 2 avbl to acft with wingspan 214' or greater with discretionary oversteer at entrance.

De-icing bay 5 not avbl to acft with wingspan 214' or greater.

See CAP Central De-icing Facility chart.

For more information, ctc Icehouse 204-987-9436.

1. Prior to push back, notify PAD CONTROL (122.925) and WINNIPEG GND when de-icing is required.
2. Hold short of Central De-icing Facility (CDF) and ctc PAD CONTROL on 122.925.
Note: In the event that the "Hold" light and/or inset lgt can not be utilized, the CDF will deploy a "Follow Me" vehicle.
3. All deicing operations are performed with acft engines running, unless otherwise advised by PAD CONTROL.

CAUTION: all oprg engines must be maintained at gnd idle thrust settings. De-icing operation limited to maximum wind gusts of 40kts.

MANITOBA

AERODROME / FACILITY DIRECTORY

WINNIPEG / JAMES ARMSTRONG RICHARDSON INTL MB (Cont'd) CYWG

PRO (Cont'd)	4. Once de-icing is complete, acft will be instructed to ctc WINNIPEG GND for taxi clnc. DO NOT ENTER TWY H WITHOUT ATC CLEARANCE. MINIMUM BREAKAWAY THRUST MUST BE USED.
NOISE	Maint engine run-ups & lcl flt tng PPR, ctc 204-987-9798. Noise oprg restrictions & noise abatement procedures in effect, see current CAP.
HELI	Use extreme caution at apron II due to lgt acft & 10' high security fence S of apron. Air taxi along aprons IV & V proh. Caution: 7' high security fence 50' S of Mil ramp 6.
MIL	All VFR Flt Plns within Winnipeg TCA shall include an alt. MIL De-icing All Mil aircrew to arrange de-icing through Wg Ops Ctr.
CAUTION	Radiosonde balloon launches with an ascent rate of 1000 ft/min btwn the hrs of 1715Z-1730Z fr U of M (N49 48 09 W97 08 34, 7.5NM SE apt, aprx 1.2NM SW fr extended rwy centreline 13/31). Ocsl para jumps by 435 Sqn 15-21Z† Mon-Fri. Max alt 3000 ASL. Drop zone 1.5NM radius N49 52 42 W97 29 48 (10NM WSW A/D) at Beaudry Provincial Park. Hi ints lgt oprg dusk-09Z‡ from hotel roof at N49 49 19 W97 09 10 (aprx 5.3NM SE thld Rwy 31). Beams projecting upward. Hi ints lgt may create tempo effects to vision.

MANITOBA

AERODROME / FACILITY DIRECTORY

WINNIPEG (HEALTH SCIENCES CENTRE) MB (Heli)

CWH7

REF	N49 54 15 W97 09 23 Adj WNW 3°E (2016) UTC-6(5) Elev 880' VTA A5007	
OPR	Winnipeg Regional Health Authority 204-787-2735 Cert NVG Compliant PPR	
PF	A-1,2,3,4 C-5,6,7,8	
FL PLN	Pilots to open/close VFR flt plan with Edmonton rdo, FISE or by phone.	
FIC	Edmonton 866-WXBRIEF (Toll free within Canada) or 866-541-4102 (Toll free within Canada & USA)	
HELI DATA	FATO 86' dia non-supporting TLOF 57' x 57' CONC Safety Area 115' dia 17,000 lbs Max heli overall length 57.4'	
RCR	Opr 204-787-1244	
LIGHTING	RY (LO) green	
COMM		
TWR	Winnipeg 118.3	
PRO	Arr/dep 335° to 194° fr heli (H1), day/night use.	
CAUTION	Elevator vestibule W of pad	

MANITOBA

AERODROME / FACILITY DIRECTORY

WINNIPEG (CITY OF WINNIPEG) MB (Heli)

CWG2

REF	N49 54 01 W97 05 44 4°E UTC-6(5) Elev 767' VTA A5007	
OPR	City of Winnipeg 204-986-4869 204-470-7800 Cert PPR Heli clsd Oct 2-Mar 31	
PF	B-1 C-2,3 D-4,5,6	
FLT PLN	Pilots to open/close VFR flt plan with Edmonton rdo, FISE or by phone.	
FIC	Edmonton 866-WXBRIEF (Toll free within Canada) or 866-541-4102 (Toll free within Canada & USA)	
HELI DATA	FATO 66' dia CONC Safety Area 87' dia Parking Pad 1 & 2: 52' dia CONC/GRASS	
RCR	Opr	
COMM		
TWR	Winnipeg 118.3	
PRO	Arr/dep 090° to 270° fr heli, slope 8% (H3) (CAR 602.96). Mode C Transponder Mandatory - Acft operating in Winnipeg Class C CZ or TCA require a discrete transponder code which must be obtained by filing a flt plan, flt itinerary or by ctc Winnipeg ACC 204-984-5979 at least 15 min prior to entering.	
CAUTION	Extv insect ctl heli ops Apr-Oct.	