

---

# FLIGHT PLAN & SITE SURVEY

---

K 114-5873 MOOSE JAW R/C AIRCRAFT CLUB- Moose Jaw  
Municipal Airport (static display field)

July 10, 2026



## IMPORTANT NOTICE

Please ensure you have received all required authorizations prior to flight. This Site Survey was created using RPAS Wilco. The user accepts all responsibility for the accuracy of the information.

Terms & Conditions: [rpaswilco.com/#tnc](https://rpaswilco.com/#tnc)

# Mission Information

K 114-5873 MOOSE JAW R/C AIRCRAFT CLUB- MOOSE JAW MUNICIPAL AIRPORT (STATIC DISPLAY FIELD)

## FLIGHT DETAILS

Reference No:	<b>MAAC-114-5873</b>
Project Name:	<b>MOOSE JAW R/C AIRCRAFT CLUB</b>
Pilot Name:	<b>MAAC</b>
Pilot Certificate:	
Mission Type:	<b>VLOS</b>
Flight Start:	<b>July 10, 2026 11:13 AM</b>
Flight End:	<b>July 10, 2026 12:13 PM</b>

## LOCATION DETAILS

Flight Address:	<b>Moose Jaw Municipal Airport (static display field)</b>
Latitude:	<b>50° 26' 1.46" N ( 50.434 )</b>
Longitude:	<b>105° 23' 21.62" W ( -105.389 )</b>
Field Elevation:	<b>1893 ft MSL</b>
Altitude / Radius:	<b>400 ft / 926 m ( 0.5 nm )</b>
Classification:	<b>UNCONTROLLED</b>
FIR / Contact:	<b>CZWG / 204-983-8338</b>

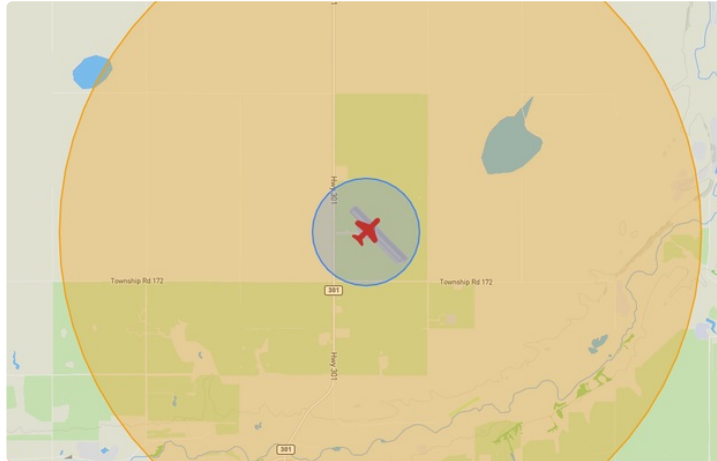
## REPORT CONTENTS

Site Survey • Obstacles (if available) • Nearby Aerodromes • Canadian Aviation Regulations • GFA • Aerodrome Supplements • METAR & TAF • NOTAMs • CFS





# Flight Map & MODEL Details

MISSION LOCATION SURVEY

## FLIGHT AREA MAP



## MISSION LOCATION DETAILS

ROLE	LATITUDE	LONGITUDE
 MODEL	50° 26' 1.46" N 50.434	105° 23' 21.62" W -105.389
 Pilot		
 Payload Op.		
 Observer		

# Airspace Classification

MISSION LOCATION SURVEY

## AIRSPACE MAP



## OVERLYING AIRSPACES

Class	Name	Floor	Ceiling
E	Moose Jaw, SK d) [TCA]	700AGL	18000MSL
B	3.3.2-48 [CAE]	12500MSL	18000MSL

Planned flight altitude is below the lowest documented airspace layer

## NEAREST AERODROMES & DISTANCE FROM OPERATION

MOOSE JAW MUNI (CJS4 - AERODROME - Reg)	Lat: 50.434	Long: -105.386	0.249KM	0.134NM	E
<b>Operator:</b> PROVINCIAL AIRWAYS: PHONE: 306-630-8870, PHONE: 306-692-7335, POST: UNKNOWN <b>FIR Contact:</b> 204-983-8338					
MOOSE JAW (DR. F. H. WIGMORE REGIONAL HOSP) (CWH6 - HELIPORT - Reg)	Lat: 50.42	Long: -105.526	9.774KM	5.278NM	W
<b>Operator:</b> DR. F.H. WIGMORE REGIONAL HOSP: FAX: 306-694-0282 , PHONE: 306-694-0275 , POST: UNKNOWN <b>FIR Contact:</b> 204-983-8338					
AIR VICE MARSHAL C.M. MCEWEN (CYMJ - AERODROME - DND)	Lat: 50.33	Long: -105.559	16.654KM	8.992NM	SW
<b>Operator:</b> DEPARTMENT OF NATIONAL DEFENCE: PHONE: 306-694-2222 +5263, PHONE: 319-826-5263, POST: UNKNOWN <b>FIR Contact:</b> 204-983-8338					

## SASKATCHEWAN

## AERODROME / FACILITY DIRECTORY

## MOOSE JAW MUNI SK

CJS4

<b>REF</b>	N50 26 01 W105 23 10 7ENE 10°E (2013) UTC-6 Elev 1904' A5006 LO2 CAP	
<b>OPR</b>	Provincial Airways 306-692-7335 (After hrs 306-630-8870) Reg	
<b>PF</b>	B-1 D-2,3,4,5,6	
<b>FLT PLN</b>	<b>FIC</b> Edmonton 866-WXBRIEF (Toll free within Canada) or 866-541-4102 (Toll free within Canada & USA)	
<b>SERVICES</b>	<b>FUEL</b> 100LL, JA-1 (FSII Avbl) Self-serve <b>OIL</b> All <b>S</b> 1, 2, 3, 4, 5, 6	
<b>RWY DATA</b>	Rwy 13(125°)/31(305°) 4000x75 ASPH AGN II	
<b>RCR</b>	Opr	
<b>LIGHTING</b>	13-(TE LO), 31-(TE LO) ARCAL-122.8 type J	
<b>COMM</b>	<b>ATF</b> UNICOM ltd hrs O/T ftc 122.8 5NM 4900 ASL excluding the CYMJ Class "D" CZ. Apt in close proximity to CFB Moose Jaw Class "D" CZ, for flt info ctc TWR 126.2	
<b>PRO</b>	Rgt hand circuits Rwy 31 (CAR 602.96). <b>Civilian training areas:</b> See MOOSE JAW / AIR VICE MARSHAL C.M. McEWEN VFR TERMINAL PROCEDURES CHART	
<b>CAUTION</b>	Ocsl parajump activity within 2NM of A/D daylight hours Apr 1-Nov 15, activated by NOTAM, max alt 12,500 ASL. P-line 2046 ASL 0.4NM SE Thld 31. Grain bins 1981 ASL 0.4NM NW Thld 13.	

## SASKATCHEWAN

## AERODROME / FACILITY DIRECTORY

**MOOSE JAW (DR. F. H. WIGMORE REGIONAL HOSP) SK (Heli)****CWH6**

<b>REF</b>	N50 25 12 W105 31 32 Adj N 10°E (2016) UTC-6 Elev 1879' A5006	
<b>OPR</b>	Dr. F.H. Wigmore Regional Hosp 306-694-0275 Cert PPR	
<b>PF</b>	A-1,2,4 C-3,5,6,7,8	
<b>FLT PLN</b>	<b>FIC</b> Edmonton 866-WXBRIEF (Toll free within Canada) or 866-541-4102 (Toll free within Canada & USA)	
<b>HELI DATA</b>	FATO/TLOF 86' dia CONC Safety Area 115' dia Max heli overall length 57.4'	
<b>RCR</b>	Opr	
<b>LIGHTING</b>	RW (LO) yellow	
<b>COMM</b>	<b>MF</b> Moose Jaw (CYMJ) TWR 126.2 ctc within 10NM 4900 ASL	
<b>PRO</b>	Arr/dep curved 064° to 099° fr heli, slope 16% (H2), day/night use. Arr/dep curved 264° to 279° fr heli, slope 16% (H2), day/night use.	
<b>CAUTION</b>	Lgt poles W, N, E of heli, marked with obst lgts. Hosp S of heli marked with lgts.	

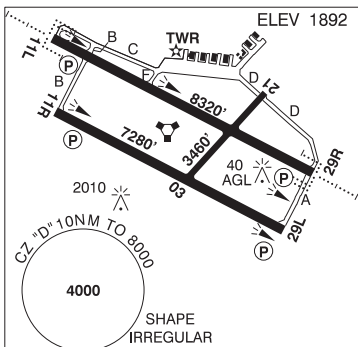
**SASKATCHEWAN**

**AERODROME / FACILITY DIRECTORY**

**MOOSE JAW / AIR VICE MARSHAL C.M. McEWEN SK**

**CYMJ**

<b>REF</b>	N50 19 49 W105 33 33 4S 9°E (2022) UTC-6 Elev 1892' A5006 LO2 HI3 HI4 CAP
<b>OPR</b>	DND Aeronautical Information Services 306-694-2222 Ext 5263 CSN 319-826-5263 All non-NFTC / CYMJ based acft PPR 48 hrs rqrd
<b>PF</b>	B-1 D-2,3,4,5,6 no pax fac avbl. Nova msg rqrd stating ETA, stop-over duration & no of pax
<b>CUST</b>	15 Wing acft only call 306-780-6223/6218



<b>FLT PLN</b>	<b>FIC</b> Edmonton 866-WXBRIEF (Toll free within Canada) or 866-541-4102 (Toll free within Canada & USA)
	<b>MIL</b> CSN 319-826-5263
	<b>WX</b> Met brief for mil only.
	CSN 826-5260 ltd hrs. O/T JMC 1-800-WXMETEO (996-3836) or CSN 432-2613. (See COMM). METAR dur flt ops. TAF dur flt ops, issue times depending on mil requirements.

<b>SERVICES</b>	All tran arr & dep 48 hrs PPR thru 15 Wg AIS 306-694-2222 Ext 5263 CSN 319-826-5263. Mil tran svc ltd 14-0030Z Mon-Fri (fr 1st Mon Nov to 3rd Mon Feb 1430-01Z Mon-Fri), 48 hrs PN or no svc avbl. All visiting acft rpt to 15 Wg AIS at 4 hg or ctc 694-2222 Ext 5263, upon arr & prior to dep.
<b>FUEL</b>	F-34, SP, Avbl 14-0030Z Mon-Fri (fr 1st Mon Nov to 3rd Mon Feb 1430-01Z Mon-Fri) O/T 48 hrs PN.
<b>OIL</b>	128, 133, 148, SOAP
<b>ARFF</b>	CAT 3
<b>SUP FL</b>	LHOX
<b>JASU</b>	CE13, 15, 16, CEA1

<b>RWY DATA</b>	Rwy 11L(109°)/29R(289°) 8320x150 ASPH Rwy 11R(109°)/29L(289°) 7280x150 ASPH Rwy 03(034°)/21(214°) 3460x100 ASPH
<b>TWY</b>	Twy B: Btwn Rwy 11L & Rwy 11R rstd to acft with wingspan of 75' or less.
<b>RCR</b>	Opr CRFI 14-0030Z Mon-Fri (fr 1st Mon Nov to 3rd Mon Feb 1430-01Z Mon-Fri) clsd Sat & Sun. Hrs may vary without ntc. Rwy 11R/29L PCN 62 F/D/X/T. Rwy 11L/29R PCN 139 F/D/X/T. Rwy 03/21 light acft only. Depression aprx 700' to 900' from thld 03, 15' rgt of centreline Rwy 03, aprx 4 inches wide and 1.5 inches deep. Twy F max wt 35000lbs. Ramp W of TWR PCN 62 R/A/X/T. Ramp E of TWR PCN 34 R/A/X/T.

<b>LIGHTING</b>	03-(T ME), 21-(T ME), 11L-AF SF(TE HI) P2 GPI 979' TCH 51', 29R-AF SF(TE HI) P2 GPI 1033' TCH 54', 11R-(TE HI) P2 GPI 1000' TCH 52', 29L-(TE HI) P2 GPI 1000' TCH 52'
-----------------	---

<b>COMM</b>	Avbl 14-0030Z Mon-Fri (fr 1st Mon Nov to 3rd Mon Feb 1430-01Z Mon-Fri), A/D frequently clsd Sat & Sun. Opr dates & hrs may vary without notice.
<b>ATIS</b>	131.3 257.8
<b>CLNC DEL</b>	135.3 234.4
<b>GND</b>	121.8 275.8
<b>TWR</b>	126.2 295.6 310.8 322.6 (E)
<b>TML</b>	119.0 227.6 342.9 (E)
<b>ARR</b>	119.0 129.1 134.1x 227.6 289.4x 308.3x 318.8x 374.1x 378.5x 381.3x (E)
<b>DEP</b>	119.0 227.6 342.9 (E)
<b>PMSV</b>	344.6 ltd hrs.

## SASKATCHEWAN

## AERODROME / FACILITY DIRECTORY

## MOOSE JAW / AIR VICE MARSHAL C.M. McEWEN SK (Cont'd)

CYMJ

<b>NAV</b>	
<b>VORTAC</b>	YMJ 113.4 Ch 81 N50 19 52 W105 33 48 (1898') VOR maint 2nd Mon of the month 13-14Z. TACAN maint 3rd Thu of the month 13-15Z.
<b>DME</b>	IBP or IMJ 109.3 Ch 30 N50 19 51 W105 33 48 Maint 2nd Mon of the month 12-14Z
<b>ILS</b>	IMJ 109.3 (Rwy 29R) RVR or IBP 109.3 (Rwy 11L) Maint 2nd Mon of the month 12-14Z
<b>PAR</b>	119.0 227.6 (E) 14-0030Z Mon-Fri (fr 1st Mon Nov to 3rd Mon Feb 1430-01Z Mon-Fri) clsd Sat & Sun. Hrs may vary without notice. PAR maint 1st Tue of the month 13-16Z. PSR/SSR maint 1st Fri of the month 12-14Z
<b>PRO</b>	A/D clsd to unauthorized acft outside of twr opr hrs 14-0030Z Mon-Fri (fr Nov 1 to Feb 15 1430-01Z Mon-Fri). Acft unable to establish two-way comm with CYMJ ATC are proh fr taxi, tkof or ldg at the A/D exc in an emerg. All RCAF acft requesting enroute apch during twr ops hrs do not require PPR. Apch req appr at the discretion of CYMJ ATS subj to tfc density. All tran acft must ctc CYMJ gnd on 121.8/275.8 prior to engine start. On climb out in VFR wx, all acft to not exceed 2500 ASL until beyond dep end of rwy. Acft on IFR misd apchs in VMC should fly from the misd apch point to the rwy thld and track rwy centerline by best means until interception of the misd apch radial, where applicable. Rgt hand circuits Rwy 11R and 29R (CAR 602.96). Tfc Ptn - Conv 3000 ASL, Jet/High-perf turboprop 3500 MSL. CZ may be active outside published hrs. Glider activity wknds & hols within 3 NM of AD max alt 10,000 ASL Paradrop activity to 12,000 ASL within 1.5NM of Moose Jaw Muni. <b>Civilian training areas:</b> See MOOSE JAW / AIR VICE MARSHAL C.M. McEWEN VFR TERMINAL PROCEDURES CHART.
<b>HELI</b>	Dep & arr Helo 1 & 2 see VTPC. Arriving acft must ctc twr 295.6 or 126.2 prior to entering CZ & req Helo 1 or Helo 2 arr. Intercept inbound track within 10NM. Heli parking positions as directed by ATC (normally west side of control tower).
<b>NOISE</b>	All mil acft shall avoid flying over the city of Moose Jaw below 5000 ft ASL.
<b>CAUTION</b>	Rwy 21 - PSR twr 2010 ASL loc 2034' along & 767' rgt of dep end centreline. RPAS area (Hamilton Flats), 3.5NM NW of aerodrome YMJ R333 3.5 DME posn (N50 23 18 W105 35 12) max alt 400 AGL.