

---

# FLIGHT PLAN & SITE SURVEY

---

B 418-5882 SOUTH WEST FLYERS- Yarmouth Main Street

July 10, 2026



**IMPORTANT NOTICE**

Please ensure you have received all required authorizations prior to flight. This Site Survey was created using RPAS Wilco. The user accepts all responsibility for the accuracy of the information.

Terms & Conditions: [rpaswilco.com/#tnc](https://rpaswilco.com/#tnc)

# Mission Information

B 418-5882 SOUTH WEST FLYERS- YARMOUTH MAIN STREET

## FLIGHT DETAILS

Reference No:	<b>MAAC-418-5882</b>
Project Name:	<b>SOUTH WEST FLYERS</b>
Pilot Name:	<b>MAAC</b>
Pilot Certificate:	
Mission Type:	<b>VLOS</b>
Flight Start:	<b>July 10, 2026 02:13 PM</b>
Flight End:	<b>July 10, 2026 03:13 PM</b>

## LOCATION DETAILS

Flight Address:	<b>Yarmouth Main Street</b>
Latitude:	<b>43° 50' 19.50" N ( 43.839 )</b>
Longitude:	<b>66° 7' 10.96" W ( -66.12 )</b>
Field Elevation:	<b>72 ft MSL</b>
Altitude / Radius:	<b>400 ft / 926 m ( 0.5 nm )</b>
Classification:	<b>CONTROLLED</b>
FIR / Contact:	<b>CZQM / 506-867-7173</b>

### NOTES

Your flight is in controlled airspace.  
If your RPAS is > 250g, please obtain RPAS Flight Authorization using the NavDrone app or by contacting NavCanada. (CARs 901.71)

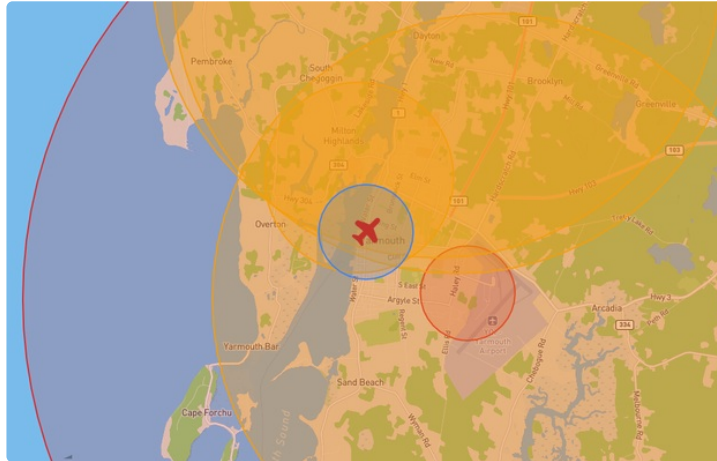
## REPORT CONTENTS

Site Survey • Obstacles (if available) • Nearby Aerodromes • Canadian Aviation Regulations • GFA • Aerodrome Supplements • METAR & TAF • NOTAMS • CFS




# Flight Map & MODEL Details

MISSION LOCATION SURVEY

## FLIGHT AREA MAP



## MISSION LOCATION DETAILS

ROLE	LATITUDE	LONGITUDE
 MODEL	43° 50' 19.50" N 43.839	66° 7' 10.96" W -66.12
 Pilot		
 Payload Op.		
 Observer		

# Airspace Classification

MISSION LOCATION SURVEY

## AIRSPACE MAP



## OVERLYING AIRSPACES

Class	Name	Floor	Ceiling
E	Yarmouth, NS [CZ]	SFC	3000GND
E	Yarmouth, NS [TA]	700AGL	1800MSL

## NEAREST AERODROMES & DISTANCE FROM OPERATION

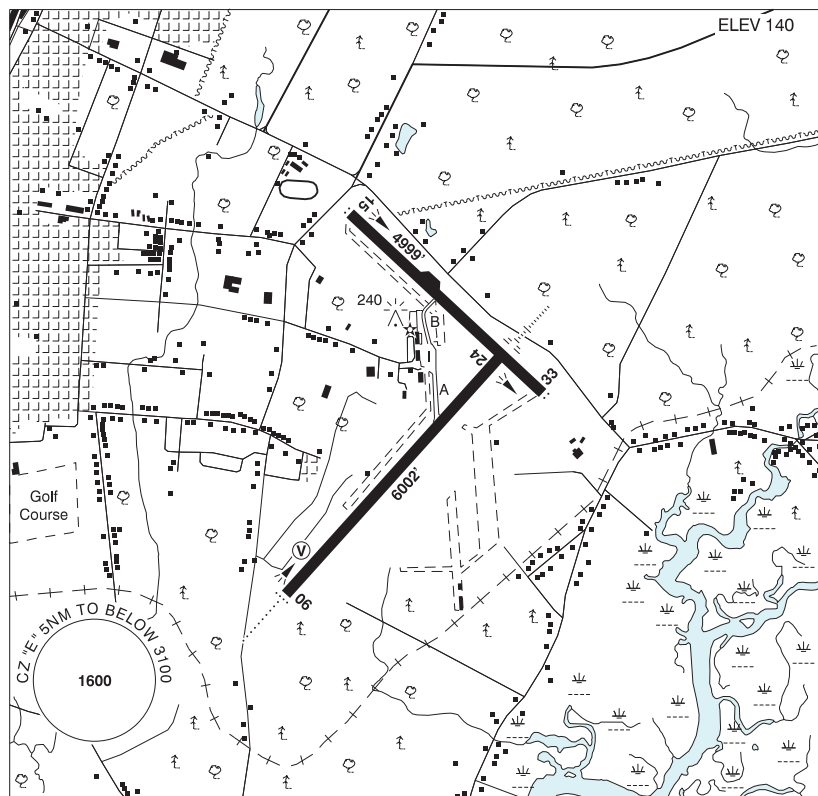
YARMOUTH (CYQI - AERODROME - Reg)	Lat: 43.827	Long: -66.088	2.858KM	1.543NM	SE
<b>Operator:</b> YARMOUTH INTERNATIONAL AIRPORT COMMISSION: PHONE: 902-742-6466, POST: UNKNOWN <b>FIR Contact:</b> 506-867-7173					
DOCTOR'S LAKE WEST (CDL6 - WATERDROME - Reg)	Lat: 43.884	Long: -66.102	5.265KM	2.843NM	N
<b>Operator:</b> DAVID ARENBURG: PHONE: 902-742-7437, PHONE: 902-749-8547, POST: UNKNOWN <b>FIR Contact:</b> 506-867-7173					
DOCTOR'S LAKE EAST (CDL5 - WATERDROME - Reg)	Lat: 43.882	Long: -66.097	5.094KM	2.751NM	N
<b>Operator:</b> RICHARD HURLBURT: PHONE: 902-749-7540, POST: UNKNOWN <b>FIR Contact:</b> 506-867-7173					

## NOVA SCOTIA

## AERODROME / FACILITY DIRECTORY

## YARMOUTH NS

CYQI



<b>REF</b>	N43 49 38 W66 05 18 Adj E 17°W (2013) UTC-4(3) Elev 140' A5003 LO8 HI6 CAP
<b>OPR</b>	Yarmouth Airport Commission 902-742-6466 11-20Z† O/T PN 30 mins exc SAR & MEDEVAC Reg
<b>PF</b>	A-1 C-2,3,4,5,6
<b>CUST</b>	AOE/110 (225 with staged off-loading) 888-226-7277 12-21Z† May 1-Oct 31; 12-21Z† Mon-Fri including hols Nov 1-Apr 30
<b>FLT PLN</b>	
<b>FIG</b>	London 866-WXBRIEF (Toll free within Canada) or 866-541-4104 (Toll free within Canada & USA)
<b>ACC</b>	(IFR only) Moncton 506-867-7177 or 866-480-8200.
<b>WX</b>	METAR H24 ALTIMETER/WIND 902-742-6466 H24 (see COMM) TAF H24 issue times: 00, 06, 12, 18Z
<b>SERVICES</b>	Call out chg may be levied for one or more svcs.
<b>FUEL</b>	100LL, JA-1 (FSII avbl), HPR ltd hrs, ctc apt opr
<b>OIL</b>	65, 100
<b>S</b>	1,2
<b>SUR FL</b>	D-ice
<b>MIL CON</b>	Yarmouth Intl Airport Corp 902-746-4532

## NOVA SCOTIA

## AERODROME / FACILITY DIRECTORY

## YARMOUTH NS (Cont'd)

CYQI

<b>RWY DATA</b>	Rwy 06(059°)/24(239°) 6002x150 ASPH Rwy 06 down 0.42% AGN IV
	Rwy 15(150°)/33(330°) 4999x150 ASPH Rwy 15 down 0.35% AGN IIIA
	B: Acft over 50,000 lbs not auth.
<b>TWY</b>	Opr CRFI & win maint avbl ltd hrs, PCN
<b>RCR</b>	
<b>LIGHTING</b>	06-AD(non-std 2000') (TE HI) V2, 24-AE(TE HI), 15-AS(TE ME), 33-AS(TE ME)
<b>COMM</b>	
<b>RCO</b>	London Rdo 123.55 (FISE)
<b>MF</b>	UNICOM (AU) 123.0 5NM 3100 ASL (CAR 602.98)
<b>PAL</b>	Moncton Ctr 123.9 368.5
<b>CAUTION</b>	Daily radiosonde balloon launches with an ascent rate of 1000 ft/min btwn hrs of 1115-1345Z and 2315-0145Z. Deer in vic of aprt.

# CANADA WATER AERODROME SUPPLEMENT

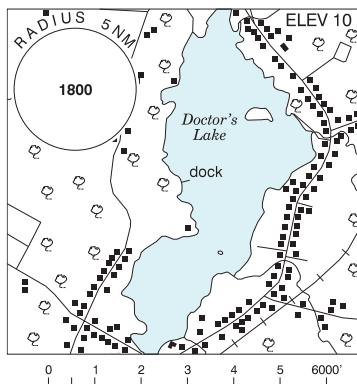
Effective 0901Z 19 March 2026 to 0901Z 18 February 2027

## B44 AERODROME/FACILITY DIRECTORY

### DOCTOR'S LAKE WEST NS

CDL6

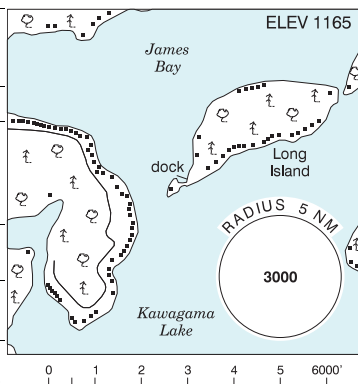
<b>REF</b>	N43 53 04 W66 06 09 1.0NW 17°W (2014) UTC-4(3) Elev 10' A5003
<b>OPR</b>	David Arenburg 902-742-7437 902-749-8547 Reg PN
<b>PF</b>	B-1, C-2,3,4,5,6
<b>FLT PLN</b>	<b>FIG</b> London 866-WXBRIEF (Toll free within Canada) or 866-541-4104 (Toll free within Canada & USA) <b>ACC</b> (IFR only) Moncton 506-867-7177 or 866-480-8200.
<b>A/D DATA</b>	Open water Apr-Dec min water depth 3' at dock
<b>COMM</b>	<b>RCO</b> London rdo 123.55 (FISE) <b>MF</b> UNICOM (AU) 123.0 5NM centred on Yarmouth land A/D 3.6NM SSE 3100 ASL (CAR 602.98) <b>PAL</b> Moncton Ctr (Yarmouth) 123.9 368.5
<b>CAUTION</b>	Lgt'd twrs in vicinity E & N up to 734 ASL (564 AGL)



### DORSET / AVERELL'S COVE ON

CAC5

<b>REF</b>	N45 18 29 W78 45 14 7ENE 11°W (2023) UTC-5(4) Elev 1165' A5000
<b>OPR</b>	Hans Veit 647-223-2640 Reg PPR
<b>FLT PLN</b>	<b>FIG</b> London 866-WXBRIEF (Toll free within Canada) or 866-541-4104 (Toll free within Canada & USA)
<b>A/D DATA</b>	Open water Apr-Dec. Depth 3' at dock. Island, no road access.
<b>COMM</b>	<b>ATF</b> tfc 123.2 3NM 4200 ASL
<b>CAUTION</b>	Hi terrain N of AD. Stump in water, marked 30' fr end of dock. Strong winds may cause downdrafts off hills.



# CANADA WATER AERODROME SUPPLEMENT

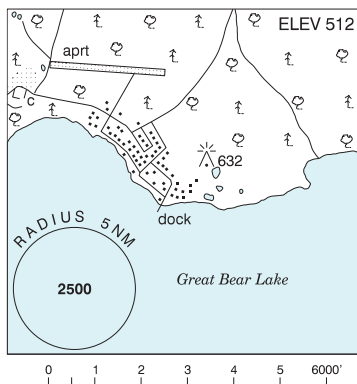
Effective 0901Z 19 March 2026 to 0901Z 18 February 2027

AERODROME/FACILITY DIRECTORY B43

## DÉLINE NT

CEN7

<b>REF</b>	N65 11 W123 25 Adj 23°E (2013) UTC-7(6) Elev 512' A5035
<b>OPR</b>	Charter Community of Déline 867-589-4800 Ltd hrs Reg
<b>PF</b>	C-1,2,4 at adj land A/D
<b>FLT PLN</b>	
<b>    FIC</b>	Edmonton 866-WXBRIEF (Toll free within Canada) or 866-541-4102 (Toll free within Canada & USA)
<b>    CARS</b>	867-589-3033 Ltd hrs (see COMM)
<b>SERVICES</b>	
<b>    S</b>	5
<b>A/D DATA</b>	Keith Arm of Great Bear Lake & lake 0.4NM W of settlement. Open water mid May-mid Oct. Fair anchorage, shoreline rocky.
<b>COMM</b>	
<b>    MF</b>	aprt rdo ltd hrs O/T tfc 122.1 5NM centred on Déline land A/D 1.7NM NNW 3700 ASL (CAR 602.98)
<b>    APRT RDO</b>	122.1 (V) 14-00Z± Mon-Sat, 18-23Z± Sun exc federal observed hols, at land A/D 1.7NM NNW
<b>CAUTION</b>	No sheltered fr E winds. Swells hi if E winds exceed 15 m.p.h.

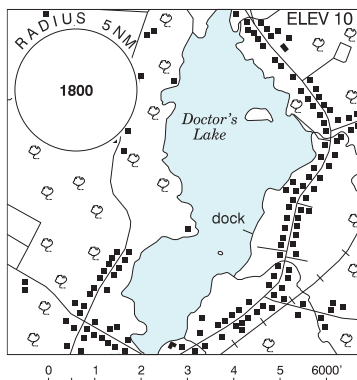


## DIGBY ISLAND BC — See PRINCE RUPERT / DIGBY ISLAND

## DOCTOR'S LAKE EAST NS

CDL5

<b>REF</b>	N43 52 54 W66 05 51 0.7NW 17°W (2014) UTC-4(3) Elev 10' A5003
<b>OPR</b>	Richard Hurlburt 902-749-7540 Reg
<b>PF</b>	B-1 C-2,3,4,5,6
<b>FLT PLN</b>	
<b>    FIC</b>	London 866-WXBRIEF (Toll free within Canada) or 866-541-4104 (Toll free within Canada & USA)
<b>    ACC</b>	(IFR only) Moncton 506-867-7177 or 866-480-8200.
<b>A/D DATA</b>	Open water Apr-Dec min water depth 3' at dock
<b>COMM</b>	
<b>    RCO</b>	London rdo 123.55 (FISE)
<b>    MF</b>	UNICOM (AU) 123.0 5NM centered on Yarmouth land A/D 3.2NM SSE 3100 ASL (CAR 602.98)
<b>    PAL</b>	Moncton Ctr (Yarmouth) 123.9 368.5
<b>CAUTION</b>	Lgtd twrs in vicinity E & N up to 734 ASL (564 AGL)



# CANADA WATER AERODROME SUPPLEMENT

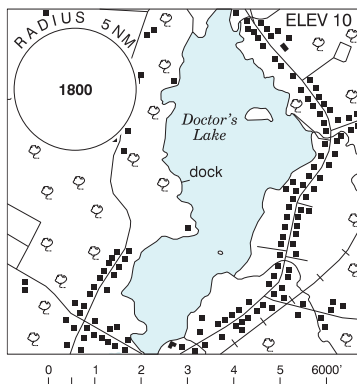
Effective 0901Z 19 March 2026 to 0901Z 18 February 2027

## B44 AERODROME/FACILITY DIRECTORY

### DOCTOR'S LAKE WEST NS

CDL6

<b>REF</b>	N43 53 04 W66 06 09 1.0NW 17°W (2014) UTC-4(3) Elev 10' A5003
<b>OPR</b>	David Arenburg 902-742-7437 902-749-8547 Reg PN
<b>PF</b>	B-1, C-2,3,4,5,6
<b>FLT PLN</b>	<b>FIG</b> London 866-WXBRIEF (Toll free within Canada) or 866-541-4104 (Toll free within Canada & USA) <b>ACC</b> (IFR only) Moncton 506-867-7177 or 866-480-8200.
<b>A/D DATA</b>	Open water Apr-Dec min water depth 3' at dock
<b>COMM</b>	<b>RCO</b> London rdo 123.55 (FISE) <b>MF</b> UNICOM (AU) 123.0 5NM centred on Yarmouth land A/D 3.6NM SSE 3100 ASL (CAR 602.98) <b>PAL</b> Moncton Ctr (Yarmouth) 123.9 368.5
<b>CAUTION</b>	Lgt'd twrs in vicinity E & N up to 734 ASL (564 AGL)



### DORSET / AVERELL'S COVE ON

CAC5

<b>REF</b>	N45 18 29 W78 45 14 7ENE 11°W (2023) UTC-5(4) Elev 1165' A5000
<b>OPR</b>	Hans Veit 647-223-2640 Reg PPR
<b>FLT PLN</b>	<b>FIG</b> London 866-WXBRIEF (Toll free within Canada) or 866-541-4104 (Toll free within Canada & USA)
<b>A/D DATA</b>	Open water Apr-Dec. Depth 3' at dock. Island, no road access.
<b>COMM</b>	<b>ATF</b> tfc 123.2 3NM 4200 ASL
<b>CAUTION</b>	Hi terrain N of AD. Stump in water, marked 30' fr end of dock. Strong winds may cause downdrafts off hills.

