
FLIGHT PLAN & SITE SURVEY

B 209-5893 FREDERICTON MODEL AIRCRAFT CLUB-
Killarney Field

July 10, 2026



IMPORTANT NOTICE

Please ensure you have received all required authorizations prior to flight. This Site Survey was created using RPAS Wilco. The user accepts all responsibility for the accuracy of the information.

Terms & Conditions: rpaswilco.com/#tnc

Mission Information

B 209-5893 FREDERICTON MODEL AIRCRAFT CLUB- KILLARNEY FIELD

FLIGHT DETAILS

Reference No:	MAAC-209-5893
Project Name:	FREDERICTON MODEL AIRCRAFT CLUB
Pilot Name:	MAAC
Pilot Certificate:	
Mission Type:	VLOS
Flight Start:	July 10, 2026 02:14 PM
Flight End:	July 10, 2026 03:14 PM

LOCATION DETAILS

Flight Address:	Killarney Field
Latitude:	46° 5' 2.89" N (46.084)
Longitude:	66° 36' 17.38" W (-66.605)
Field Elevation:	49 ft MSL
Altitude / Radius:	400 ft / 926 m (0.5 nm)
Classification:	UNCONTROLLED
FIR / Contact:	CZQM / 506-867-7173

REPORT CONTENTS

Site Survey • Obstacles (if available) • Nearby Aerodromes • Canadian Aviation Regulations • GFA • Aerodrome Supplements • METAR & TAF • NOTAMs • CFS

Flight Map & MODEL Details





MISSION LOCATION SURVEY

FLIGHT AREA MAP



IMAGE NOT AVAILABLE

MISSION LOCATION DETAILS

ROLE	LATITUDE	LONGITUDE
 MODEL	46° 5' 2.89" N 46.084	66° 36' 17.38" W -66.605
 Pilot		
 Payload Op.		
 Observer		

Airspace Classification

MISSION LOCATION SURVEY

AIRSPACE MAP



OVERLYING AIRSPACES

Class	Name	Floor	Ceiling
E	Fredericton, NB [TA]	700AGL	18000MSL
E	MARITIME CAE [CAE]	2200AGL	18000MSL

Planned flight altitude is below the lowest documented airspace layer

NEAREST AERODROMES & DISTANCE FROM OPERATION

WEYMAN AIRPARK (CCG3 - AERODROME - Reg)	Lat: 46.038	Long: -66.859	20.277KM	10.949NM	W
Operator: DAVID BRADLEY: PHONE: 506-450-4087, POST: UNKNOWN FIR Contact: 506-867-7173					
FREDERICTON (RCMP) (CRC2 - HELIPORT - Reg)	Lat: 45.932	Long: -66.667	17.614KM	9.511NM	S
Operator: ROYAL CANADIAN MOUNTED POLICE: PHONE: 506-451-6050, POST: UNKNOWN FIR Contact: 506-867-7173					
FREDERICTON INTL (CYFC - AERODROME/HELIPORT - Cert)	Lat: 45.869	Long: -66.537	24.533KM	13.247NM	S
Operator: FREDERICTON INTERNATIONAL AIRPORT AUTHORITY INC.: PHONE: 506-460-0920, POST: UNKNOWN FIR Contact: 506-867-7173					

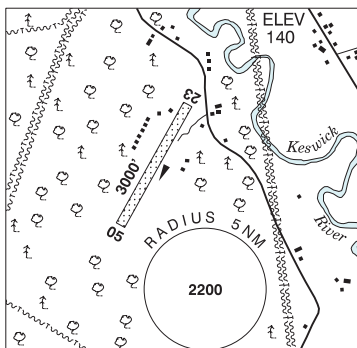
NEW BRUNSWICK

AERODROME / FACILITY DIRECTORY

WEYMAN AIRPARK NB

CCG3

REF	N46 02 15 W66 51 32 17°W (2015) UTC-4(3) Elev 140' A5003
OPR	David Bradley 506-450-4087 Reg PPR
PF	B-1 C-2 D-3,4,5,6
FLT PLN	
FIC	London 866-WXBRIEF (Toll free within Canada) or 866-541-4104 (Toll free within Canada & USA)
ACC	(IFR only) Moncton 506-867-7177 or 866-480-8200.
RWY DATA	Rwy 05/23 3000x80 SAND/GRVL/chip seal
RCR	Opr No win maint
COMM	
ATF	tfc 123.2 5NM 3100 ASL
CAUTION	Glider activity Apr 15-Dec 15. Rwy may be soft during thaw. Scottfield Airpark aprx 12NM W, ATF 123.2.



NEW BRUNSWICK

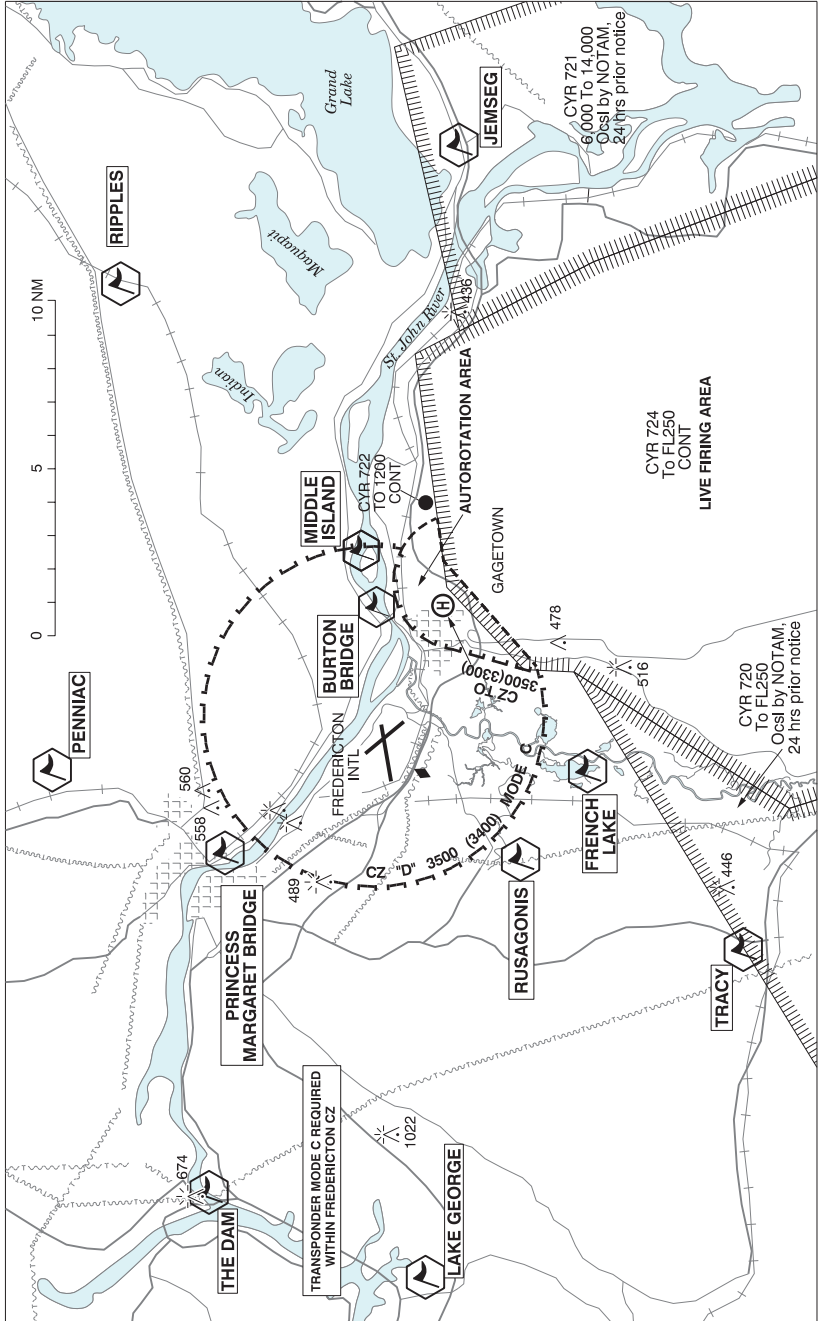
AERODROME / FACILITY DIRECTORY

FREDERICTON (RCMP) NB (Heli)

CRC2

REF	N45 55 54 W66 40 00 Adj 18°W (2014) UTC-4(3) Elev 369' A5003	
OPR	RCMP 506-451-6050 Reg PPR	
FLT PLN		
FIC	London 866-WXBRIEF (Toll free within Canada) or 866-541-4104 (Toll free within Canada & USA)	
ACC	(IFR only) Moncton 506-867-7177 or 866-480-8200.	
HELI DATA	FATO/TLOF 77' x 77' ASPH	
LIGHTING	RF(FL) DR(LO) Arr/dep 150° fr heli	
COMM		
ATF	tfc 123.2 5NM 3400 ASL excluding Fredericton Intl CZ	
PRO	Arr/dep 150° & 313° fr heli. Ctc Fredericton TWR 119.0 1045-0345Z± O/T Saint John rdo 119.0 prior to arr/dep to advise intentions.	

FREDERICTON VFR TERMINAL PROCEDURES CHART



FREDERICTON VFR TERMINAL PROCEDURES CHART (Cont'd)

NAME	IDENT	LAT/LONG
BURTON BRIDGE	VCBTB	N45° 51' 54" W066° 27' 05"
FRENCH LAKE	VCFRL	N45° 46' 00" W066° 33' 47"
JEMSEG	VCJMS	N45° 49' 44" W066° 07' 00"
LAKE GEORGE	VCLKG	N45° 51' 19" W066° 55' 34"
MIDDLE ISLAND	VCMDI	N45° 52' 45" W066° 24' 58"
PENNIAC	VCPNC	N46° 02' 00" W066° 35' 04"
PRINCESS MARGARET BRIDGE	VCRMB	N45° 56' 29" W066° 37' 33"
RIPPLES	VCRPL	N46° 00' 00" W066° 13' 00"
RUSAGONIS	VCRUS	N45° 48' 00" W066° 37' 28"
THE DAM	VCDAM	N45° 57' 23" W066° 52' 13"
TRACY	VCTRC	N45° 41' 03" W066° 41' 05"

VFR ROUTE PROCEDURES

DEPARTURES:

MACTAQUAC (NW): Outbound clear circuit, direct MACTAQUAC Dam enroute. Altitude: Climb to and maintain 2600 ft until clear of CZ.

RIPPLES (ENE): Outbound clear circuit, direct RIPPLES enroute, maintain North of the VOR at all times. Altitude: Climb to and maintain 2600 ft until clear of CZ and then maintain 3000 ft until training area or at/abeam Grand Lake.

PENNIAC DEPARTURE (N): Outbound clear circuit direct PENNIAC enroute. Altitude: Climb to and maintain 2600 ft until clear of CZ.

JEMSEG (SE): Outbound: Follow RIPPLES DEPARTURE, then turn right (south) to JEMSEG enroute. Altitude: Climb to and maintain 3000 ft until at/abeam JEMSEG.

TRACY (SW): Outbound clear circuit, direct TRACY enroute. Altitude: Climb to and maintain 2600 ft until clear of CZ.

Departing aircraft must join the route as soon as practicable after departure (i.e. once clear of the circuit unless instructed by ATC to turn after departure), follow the routes as described and maintain 2,600 feet until they have departed the Fredericton CZ.

ARRIVALS:

HWY10 (ENE): Inbound direct RIPPLES, follow Hwy 10 until North of airport, then direct CYFC. Maintain North of VOR at all times. Altitude: If inbound from East, descend to 2500 ft before Grand Lake, then descend to and maintain 1600 ft prior to entering CZ.

LAKE GEORGE (NW): Inbound direct Hwy 2 and Hwy 3 intersection, direct CYFC, maintain North of apch Rwy 09 at all times. Altitude: Descend to and maintain 1600 ft prior to entering CZ.

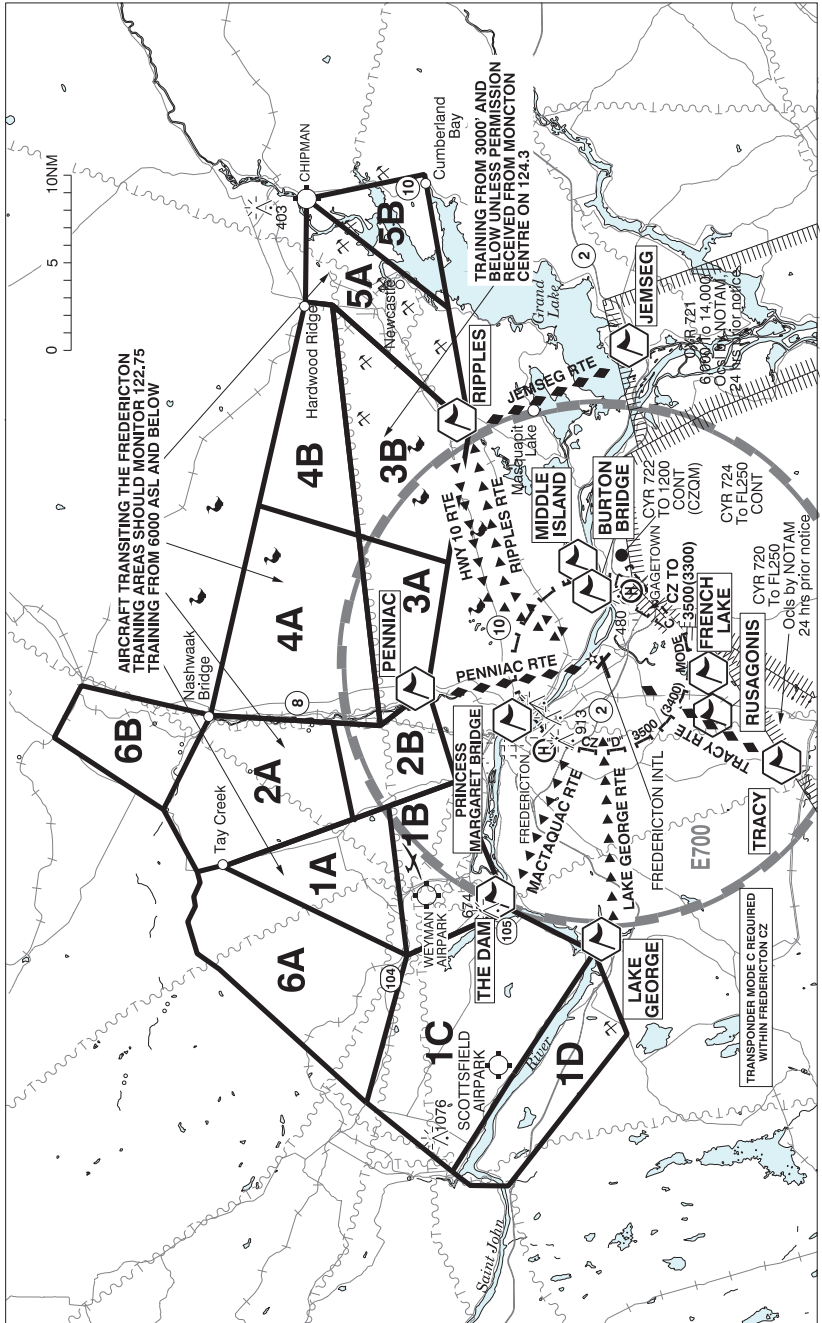
PENNIAC (N): Inbound direct PENNIAC, direct CYFC. Altitude: Descend to and maintain 1600 ft prior to entering CZ.

JEMSEG (SE): Inbound direct JEMSEG, direct RIPPLES, then follow HWY10 ARRIVAL. Altitude: Descend to 2500 ft at/abeam JEMSEG, then descend to and maintain 1600 ft prior to entering CZ.

TRACY: Inbound direct TRACY, direct CYFC. Altitude: Descend to and maintain 1600 ft prior to entering CZ.

Arriving aircraft must enter the Zone at 1,600', once inside CZ, descend at pilot's discretion, unless otherwise instructed, cleared or requested to maintain a specific altitude.

FREDERICTON VFR TERMINAL PROCEDURES CHART - TRAINING AREAS

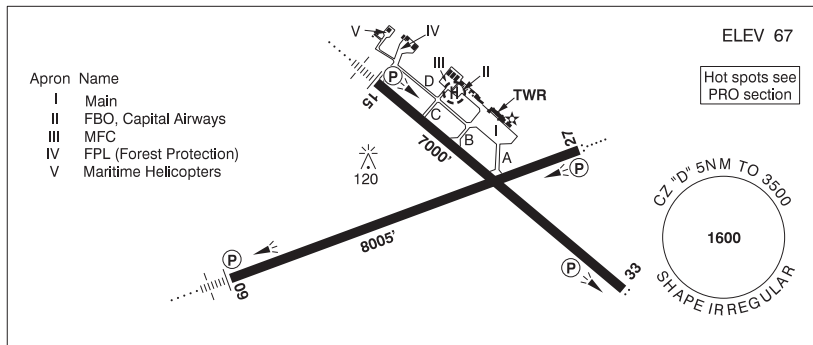


NEW BRUNSWICK

AERODROME / FACILITY DIRECTORY

FREDERICTON INTL NB

CYFC



REF	N45 52 08 W66 32 14 7SE 18°W (2014) UTC-4(3) Elev 67' A5003 LO8 HI6 CAP OC
OPR	Fredericton International Airport Authority Inc. 506-460-0920 0845-0515Z† Cert
PF	A-1,2,3,6,7 C-4,5
CUST	AOE/55 (140 with staged off-loading) 12-04Z† 888-226-7277
FLT PLN	<p>FIG London 866-WXBRIEF (Toll free within Canada) or 866-541-4104 (Toll free within Canada & USA)</p> <p>ACC (IFR only) Moncton 506-867-7177 or 866-480-8200.</p> <p>WX METAR AUTO H24 WxCam TAF H24, issue times: 00, 06, 12, 18Z.</p>
SERVICES	Call out chg may be levied for one or more svcs
FUEL	100LL, JA-1 (FSII avbl), F-34, IP, HPR
OIL	15W50
S	1,2,4,6 Capital Airways
ARFF	DESIGNATED CAT 6 (CAT 7 4 hr PN) 0845-0515Z†
JASU	CE16 Capital Airways
PVT ADV	Capital Airways Inc. 122.87 506-446-3588 12-22Z† O/T PN 506-238-3653 call out chg. Air Canada Ground Handling 130.375 506-446-6133
MIL CON	Menzies Aviation/ASIG 1-506-470-2320
RWY DATA	Rwy 09(087°)/27(267°) 8005x200 ASPH Rwy 15(148°)/33(328°) 7000x150 ASPH RESA: Rwy 15 492'
RWY CERT	Rwy 09 RVR 1200(1/4 sm)/Rwy 27 RVR 1200(1/4 sm) AGN V Rwy 15 RVR 1200(1/4 sm)/Rwy 33 RVR 1200(1/4 sm) AGN V
TWY CERT	Twy C AGN II Twy D AGN IIIB
TWY	Twy C uncontrolled NE of Twy D
HELI DATA	Parking Pad: 60' dia ASPH Max heli overall length 49'
RCR	Opr CRFI, win maint 0915-0400Z† PN for extended svc. PCN
LIGHTING	09-AN(TE HI) P2, 27-AO(TE HI) P2, 15-AN(TE HI) P2, 33-AS(TE HI) P2 ARCAL-119.0 type K (when twr closed)

NEW BRUNSWICK

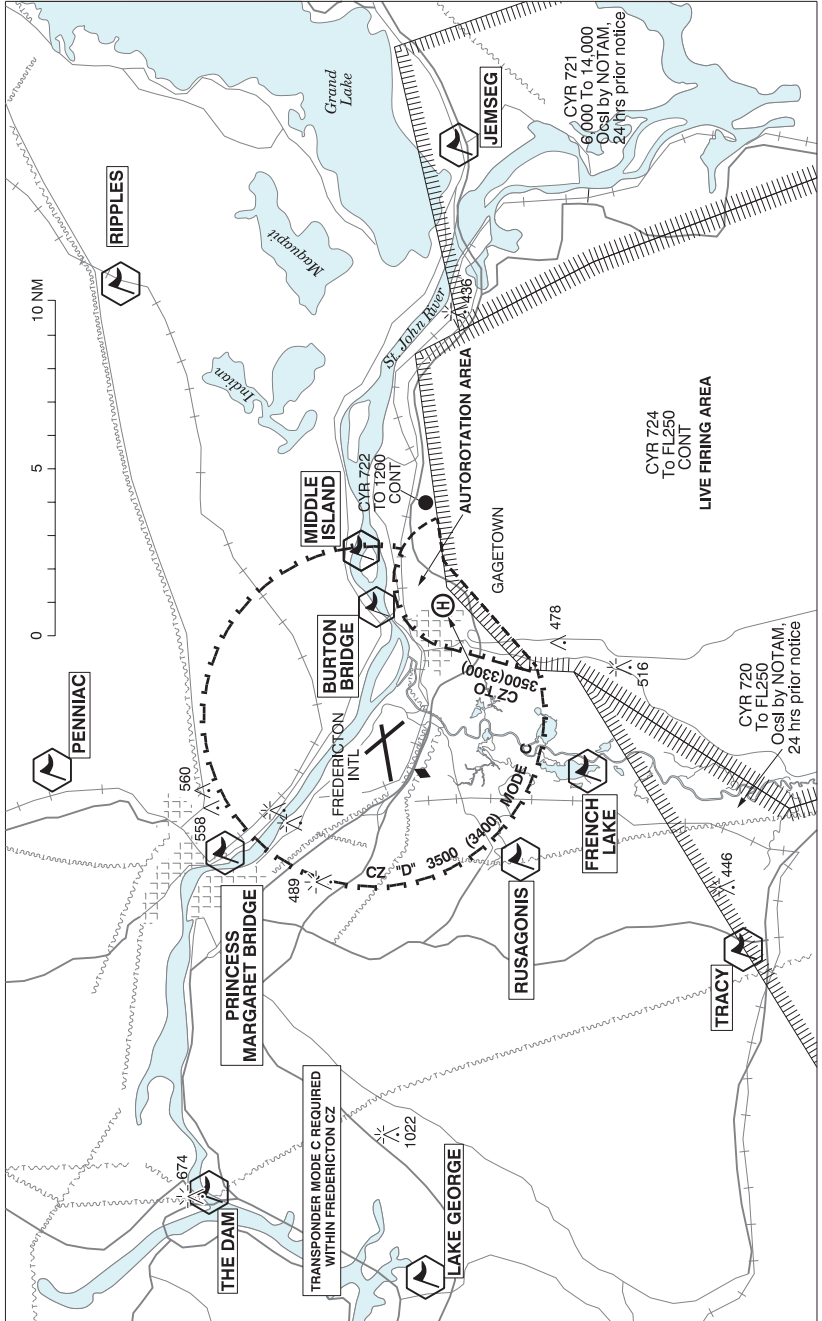
AERODROME / FACILITY DIRECTORY

FREDERICTON INTL NB (Cont'd)

CYFC

COMM	RCO	Saint John rdo 119.0 PTC avbl (RAAS) 0345-1045Z† (emerg only 506-646-7223)
	ATIS	127.55 1045-0345Z† (O/T AWOS)
	GND	121.7 1045-0345Z†
	TWR	119.0 (E) 1045-0345Z† (emerg only 506-446-3420)
	MF	Saint John rdo 119.0 0345-1045Z† 5NM 3500 ASL (CAR 602.98)
	PAL	Moncton Ctr 124.3 135.5 270.8
NAV	DME	IDC 111.3 Ch 50 N45 51 47 W66 32 52 (86')
	ILS	IDC 111.3 (Rwy 09) RVR
PRO	<p>Pivot turnaround proh; acft must use all avbl rwy width when making turnaround. Dep Rwy 15 turn as soon as practicable after tkof to remain clear of CYR724. Transponder MODE C required within the Fredericton CZ. Pilots should refer to Canadian Airport Charts (CAC) to obtain details on established hot spots, prior to operating on maneuvering areas. CAC are available for free on the NAV CANADA website.</p> <p>VFR ARR/DEP ROUTES: See FREDERICTON VTPC - TRAINING AREAS</p>	
CAUTION	<p>RESTRICTED AREAS: Extv live firing in CYR724, 725 4NM SE of aprt. AIRSPACE: Gagetown Class "E" CZ 3.5NM SE to 3500 ASL.</p>	

FREDERICTON VFR TERMINAL PROCEDURES CHART



FREDERICTON VFR TERMINAL PROCEDURES CHART (Cont'd)

NAME	IDENT	LAT/LONG
BURTON BRIDGE	VCBTB	N45° 51' 54" W066° 27' 05"
FRENCH LAKE	VCFRL	N45° 46' 00" W066° 33' 47"
JEMSEG	VCJMS	N45° 49' 44" W066° 07' 00"
LAKE GEORGE	VCLKG	N45° 51' 19" W066° 55' 34"
MIDDLE ISLAND	VCMDI	N45° 52' 45" W066° 24' 58"
PENNIAC	VCPNC	N46° 02' 00" W066° 35' 04"
PRINCESS MARGARET BRIDGE	VCRMB	N45° 56' 29" W066° 37' 33"
RIPPLES	VCRPL	N46° 00' 00" W066° 13' 00"
RUSAGONIS	VCRUS	N45° 48' 00" W066° 37' 28"
THE DAM	VCDAM	N45° 57' 23" W066° 52' 13"
TRACY	VCTRC	N45° 41' 03" W066° 41' 05"

VFR ROUTE PROCEDURES

DEPARTURES:

MACTAQUAC (NW): Outbound clear circuit, direct MACTAQUAC Dam enroute. Altitude: Climb to and maintain 2600 ft until clear of CZ.

RIPPLES (ENE): Outbound clear circuit, direct RIPPLES enroute, maintain North of the VOR at all times. Altitude: Climb to and maintain 2600 ft until clear of CZ and then maintain 3000 ft until training area or at/abeam Grand Lake.

PENNIAC DEPARTURE (N): Outbound clear circuit direct PENNIAC enroute. Altitude: Climb to and maintain 2600 ft until clear of CZ.

JEMSEG (SE): Outbound: Follow RIPPLES DEPARTURE, then turn right (south) to JEMSEG enroute. Altitude: Climb to and maintain 3000 ft until at/abeam JEMSEG.

TRACY (SW): Outbound clear circuit, direct TRACY enroute. Altitude: Climb to and maintain 2600 ft until clear of CZ.

Departing aircraft must join the route as soon as practicable after departure (i.e. once clear of the circuit unless instructed by ATC to turn after departure), follow the routes as described and maintain 2,600 feet until they have departed the Fredericton CZ.

ARRIVALS:

HWY10 (ENE): Inbound direct RIPPLES, follow Hwy 10 until North of airport, then direct CYFC. Maintain North of VOR at all times. Altitude: If inbound from East, descend to 2500 ft before Grand Lake, then descend to and maintain 1600 ft prior to entering CZ.

LAKE GEORGE (NW): Inbound direct Hwy 2 and Hwy 3 intersection, direct CYFC, maintain North of apch Rwy 09 at all times. Altitude: Descend to and maintain 1600 ft prior to entering CZ.

PENNIAC (N): Inbound direct PENNIAC, direct CYFC. Altitude: Descend to and maintain 1600 ft prior to entering CZ.

JEMSEG (SE): Inbound direct JEMSEG, direct RIPPLES, then follow HWY10 ARRIVAL. Altitude: Descend to 2500 ft at/abeam JEMSEG, then descend to and maintain 1600 ft prior to entering CZ.

TRACY: Inbound direct TRACY, direct CYFC. Altitude: Descend to and maintain 1600 ft prior to entering CZ.

Arriving aircraft must enter the Zone at 1,600', once inside CZ, descend at pilot's discretion, unless otherwise instructed, cleared or requested to maintain a specific altitude.

FREDERICTON VFR TERMINAL PROCEDURES CHART - TRAINING AREAS

